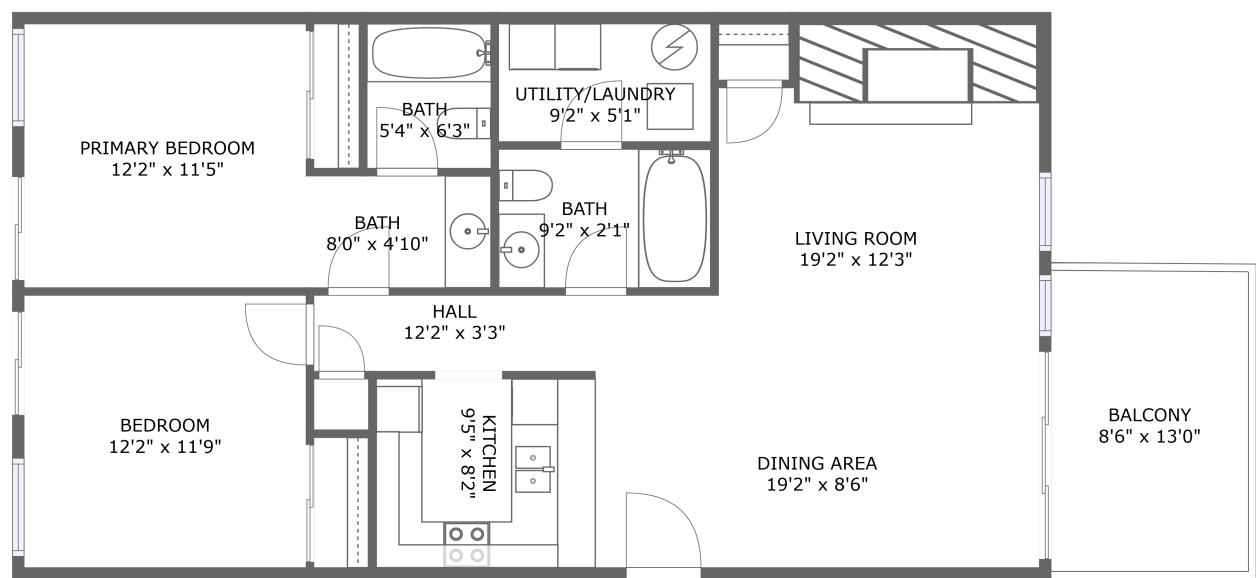


Home report

6601 Smith Mountain Road, Penhook, Pittsylvania County,  
Virginia, United States, 24137, 230



MAIN LEVEL

**Total Area: 1096 sq. ft**  
Floor 1: 1096 sq. ft  
Excluded: Outdoor Balcony 110 sq. ft

Property summary

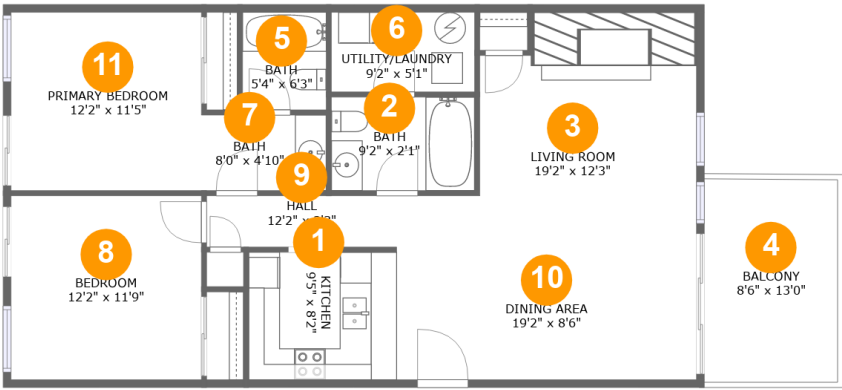
 **1** Floors

 **2** Bedrooms

 **2** Bathrooms

Home report

6601 Smith Mountain Road, Penhook, Pittsylvania County,  
Virginia, United States, 24137, 230

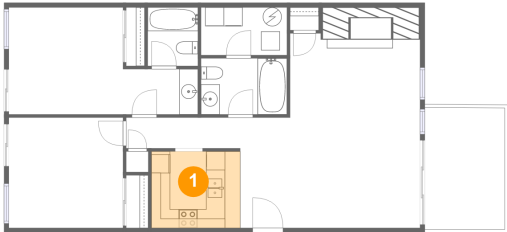


Room dimensions

Floor 1 Total:1096sqft    Excluded: 110sqft

#		Max Dimensions	sqft	Included
1	Kitchen	9'5" x 8'2"	77 sq. ft	Yes
2	Bath	9'2" x 2'1"	55 sq. ft	Yes
3	Living Room	19'2" x 12'3"	216 sq. ft	Yes
4	Balcony	8'6" x 13'0"	110 sq. ft	No
5	Bath	5'4" x 6'3"	33 sq. ft	Yes
6	UTILITY/LAUNDRY	9'2" x 5'1"	46 sq. ft	Yes
7	Bath	8'0" x 4'10"	38 sq. ft	Yes
8	Bedroom	12'2" x 11'9"	143 sq. ft	Yes
9	Hall	12'2" x 3'3"	40 sq. ft	Yes
10	Dining Area	19'2" x 8'6"	162 sq. ft	Yes
11	Primary Bedroom	12'2" x 11'5"	138 sq. ft	Yes

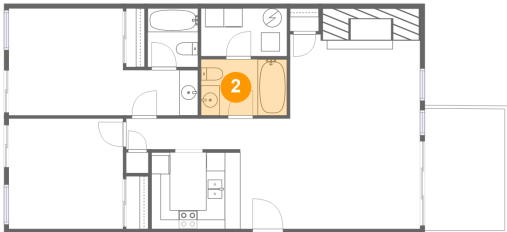
1 Floor 1 - Kitchen



Max Dimensions: 9'5" x 8'2"  
Calculated Area: 77 sq. ft  
Included: Yes

Heated: Yes  
Finished: Yes  
Enclosed: Yes  
Contiguous: Yes  
Permitted: Yes  
Wet space: No  
Addition: No  
Conversion: No

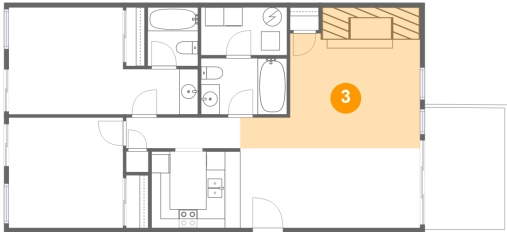
2 Floor 1 - Bath



Max Dimensions: 9'2" x 2'1"  
Calculated Area: 55 sq. ft  
Included: Yes

Heated: Yes  
Finished: Yes  
Enclosed: Yes  
Contiguous: Yes  
Permitted: Yes  
Wet space: Yes  
Addition: No  
Conversion: No

3 Floor 1 - Living Room



Max Dimensions: 19'2" x 12'3"  
Calculated Area: 216 sq. ft  
Included: Yes

Heated: Yes  
Finished: Yes  
Enclosed: Yes  
Contiguous: Yes  
Permitted: Yes  
Wet space: No  
Addition: No  
Conversion: No

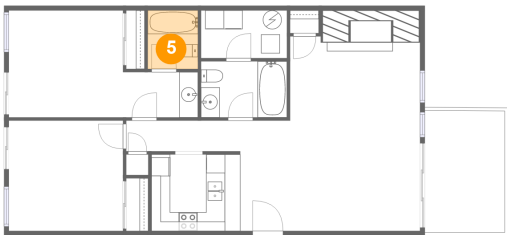
4 Floor 1 - Balcony



Max Dimensions: 8'6" x 13'0"  
Calculated Area: 110 sq. ft  
Included: No

Heated: No  
Finished: Yes  
Enclosed: No  
Contiguous: Yes  
Permitted: Yes  
Wet space: No  
Addition: No  
Conversion: No

5 Floor 1 - Bath

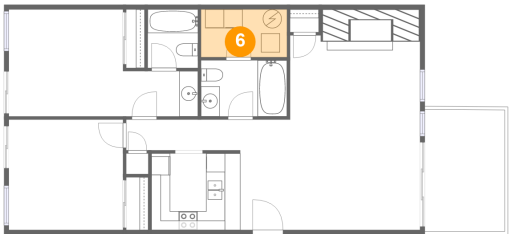


Max Dimensions: 5'4" x 6'3"  
Calculated Area: 33 sq. ft  
Included: Yes

Heated: Yes  
Finished: Yes  
Enclosed: Yes  
Contiguous: Yes  
Permitted: Yes  
Wet space: Yes  
Addition: No  
Conversion: No

6601 Smith Mountain Road, Penhook, Pittsylvania County,  
Virginia, United States, 24137, 230

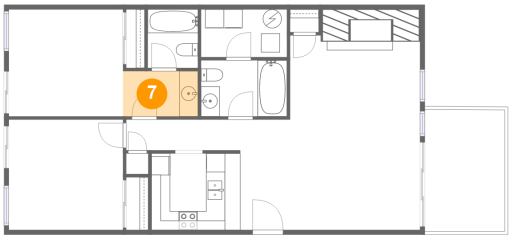
6 Floor 1 - UTILITY/LAUNDRY



Max Dimensions: 9'2" x 5'1"  
Calculated Area: 46 sq. ft  
Included: Yes

Heated: Yes  
Finished: Yes  
Enclosed: Yes  
Contiguous: Yes  
Permitted: Yes  
Wet space: No  
Addition: No  
Conversion: No

7 Floor 1 - Bath



Max Dimensions: 8'0" x 4'10"  
Calculated Area: 38 sq. ft  
Included: Yes

Heated: Yes  
Finished: Yes  
Enclosed: Yes  
Contiguous: Yes  
Permitted: Yes  
Wet space: Yes  
Addition: No  
Conversion: No

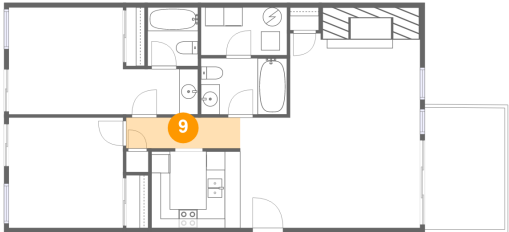
8 Floor 1 - Bedroom



Max Dimensions: 12'2" x 11'9"  
Calculated Area: 143 sq. ft  
Included: Yes

Heated: Yes  
Finished: Yes  
Enclosed: Yes  
Contiguous: Yes  
Permitted: Yes  
Wet space: No  
Addition: No  
Conversion: No

9 Floor 1 - Hall



Max Dimensions: 12'2" x 3'3"  
Calculated Area: 40 sq. ft  
Included: Yes

Heated: Yes  
Finished: Yes  
Enclosed: Yes  
Contiguous: Yes  
Permitted: Yes  
Wet space: No  
Addition: No  
Conversion: No

10 Floor 1 - Dining Area



Max Dimensions: 19'2" x 8'6"  
Calculated Area: 162 sq. ft  
Included: Yes

Heated: Yes  
Finished: Yes  
Enclosed: Yes  
Contiguous: Yes  
Permitted: Yes  
Wet space: No  
Addition: No  
Conversion: No

11 Floor 1 - Primary Bedroom



Max Dimensions: 12'2" x 11'5"  
Calculated Area: 138 sq. ft  
Included: Yes

Heated: Yes  
Finished: Yes  
Enclosed: Yes  
Contiguous: Yes  
Permitted: Yes  
Wet space: No  
Addition: No  
Conversion: No