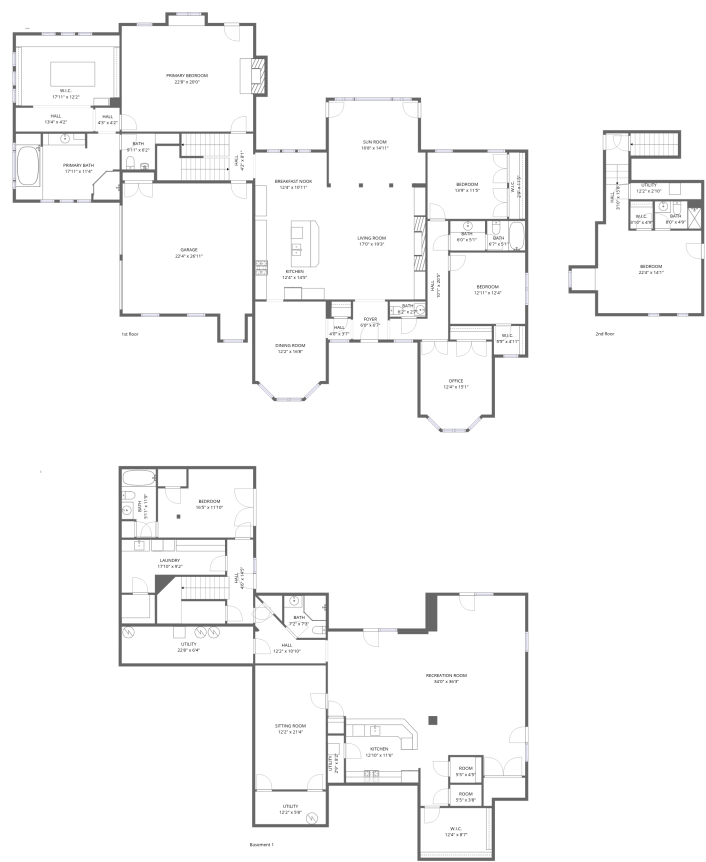


Home data report

2223 Airport Rd,Bridgewater,VA,US



Total Area: 5591 sq. ft

Below Ground: 2133 sq. ft, 1st Floor: 3057 sq. ft, 2nd Floor: 401 sq. ft

Excluded: Utility 270 sq. ft, Undefined 42 sq. ft, Garage 530 sq. ft, Fireplace 14 sq. ft, Low ceiling 37 sq. ft, Walls: 414 sq. ft

Property summary



3 Floors



5 Bedrooms



5 Bathrooms

Home data report

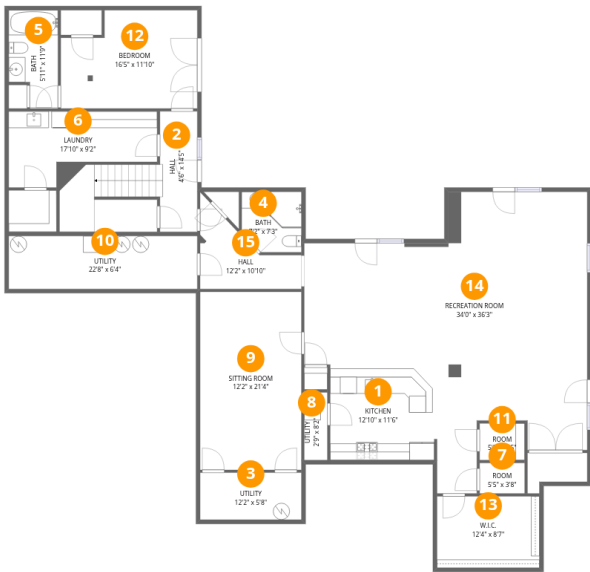
2223 Airport Rd,Bridgewater,VA,US

 **1**
Half baths

 **1**
Garages

Home data report

2223 Airport Rd,Bridgewater,VA,US



Room dimensions

Floor 1 Below grade Total:2133sqft Excluded: 278sqft

#		Dimensions	sqft	Counted as living area
1	Kitchen	12'10" x 11'6"	147 sq. ft	Yes
2	Hall	4'6" x 14'5"	158 sq. ft	Yes
3	Utility	12'2" x 5'8"	69 sq. ft	No
4	Bath	7'2" x 7'3"	49 sq. ft	Yes
5	Bath	5'11" x 11'9"	62 sq. ft	Yes
6	Laundry	17'10" x 9'2"	126 sq. ft	Yes
7	Room	5'5" x 3'8"	20 sq. ft	Yes
8	Utility	2'9" x 8'2"	23 sq. ft	No
9	Sitting Room	12'2" x 21'4"	260 sq. ft	Yes
10	Utility	22'8" x 6'4"	144 sq. ft	No
11	Room	5'5" x 4'5"	24 sq. ft	Yes

Home data report

2223 Airport Rd,Bridgewater,VA,US

#		Dimensions	sqft	Counted as living area
12	Bedroom	16'5" x 11'10"	176 sq. ft	Yes
13	W.I.C.	12'4" x 8'7"	106 sq. ft	Yes
14	Recreation Room	34'0" x 36'3"	786 sq. ft	Yes
15	Hall	12'2" x 10'10"	76 sq. ft	Yes

Home data report

2223 Airport Rd,Bridgewater,VA,US



Room dimensions

Floor 2 Total:3057sqft Excluded: 544sqft

#		Dimensions	sqft	Counted as living area
16	Dining Room	12'2" x 16'8"	189 sq. ft	Yes
17	Breakfast Nook	12'4" x 10'11"	135 sq. ft	Yes
18	Bath	6'2" x 2'7"	16 sq. ft	Yes
19	Bedroom	12'11" x 12'4"	159 sq. ft	Yes
20	Hall	4'0" x 3'7"	14 sq. ft	Yes
21	Primary Bedroom	22'8" x 20'0"	436 sq. ft	Yes
22	W.I.C.	2'9" x 11'5"	32 sq. ft	Yes
23	Bedroom	13'9" x 11'5"	157 sq. ft	Yes
24	Hall	10'1" x 20'5"	96 sq. ft	Yes
25	Garage	22'4" x 26'11"	519 sq. ft	No
26	Primary Bath	17'11" x 11'4"	201 sq. ft	Yes

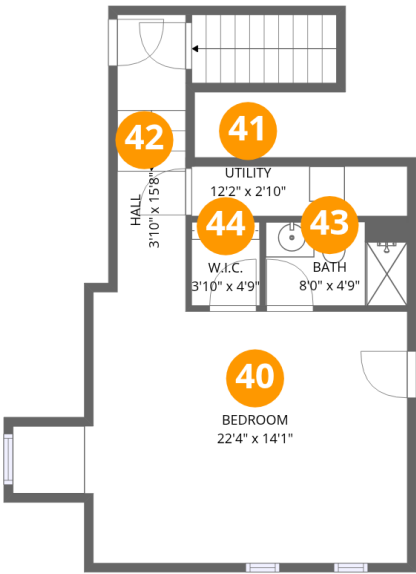
Home data report

2223 Airport Rd,Bridgewater,VA,US

#		Dimensions	sqft	Counted as living area
27	Hall	13'4" x 4'2"	55 sq. ft	Yes
28	Bath	9'11" x 6'2"	43 sq. ft	Yes
29	W.I.C.	17'11" x 12'2"	217 sq. ft	Yes
30	Sun Room	16'8" x 14'11"	236 sq. ft	Yes
31	Bath	6'7" x 5'1"	34 sq. ft	Yes
32	Living Room	17'0" x 19'3"	328 sq. ft	Yes
33	Bath	6'0" x 5'1"	31 sq. ft	Yes
34	Kitchen	12'4" x 14'5"	177 sq. ft	Yes
35	Hall	4'2" x 8'1"	123 sq. ft	Yes
36	Hall	4'3" x 4'2"	17 sq. ft	Yes
37	Office	12'4" x 15'1"	172 sq. ft	Yes
38	Foyer	6'0" x 6'7"	39 sq. ft	Yes
39	W.I.C.	5'5" x 4'11"	27 sq. ft	Yes

Home data report

2223 Airport Rd,Bridgewater,VA,US

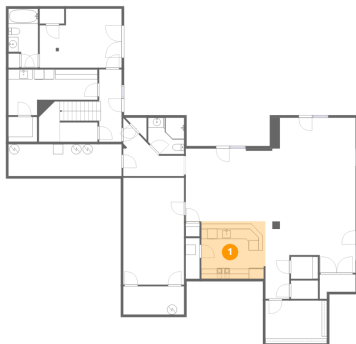


Room dimensions

Floor 3 Total:401sqft Excluded: 71sqft

#		Dimensions	sqft	Counted as living area
40	Bedroom	22'4" x 14'1"	239 sq. ft	Yes
41	Utility	12'2" x 2'10"	34 sq. ft	No
42	Hall	3'10" x 15'8"	61 sq. ft	Yes
43	Bath	8'0" x 4'9"	38 sq. ft	Yes
44	W.I.C.	3'10" x 4'9"	18 sq. ft	Yes

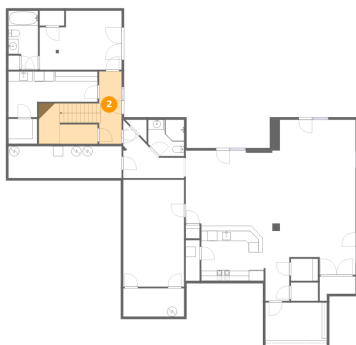
1 Floor 1 - Kitchen



Dimensions: 12'10" x 11'6"
Area: 147 sq. ft
Counted as living area: Yes

Heated: Yes
Finished: Yes
Enclosed: Yes
Contiguous: Yes
Permitted: Yes
Wet space: No
Addition: No
Conversion: No

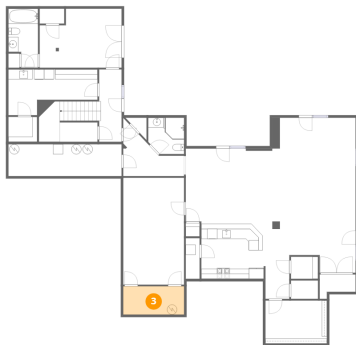
2 Floor 1 - Hall



Dimensions: 4'6" x 14'5"
Area: 158 sq. ft
Counted as living area: Yes

Heated: Yes
Finished: Yes
Enclosed: Yes
Contiguous: Yes
Permitted: Yes
Wet space: No
Addition: No
Conversion: No

3 Floor 1 - Utility



Dimensions: 12'2" x 5'8"
Area: 69 sq. ft
Counted as living area: No

Heated: Yes
Finished: No
Enclosed: Yes
Contiguous: Yes
Permitted: Yes
Wet space: No
Addition: No
Conversion: No

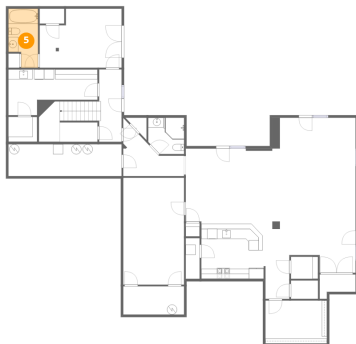
4 Floor 1 - Bath



Dimensions: 7'2" x 7'3"
Area: 49 sq. ft
Counted as living area: Yes

Heated: Yes
Finished: Yes
Enclosed: Yes
Contiguous: Yes
Permitted: Yes
Wet space: Yes
Addition: No
Conversion: No

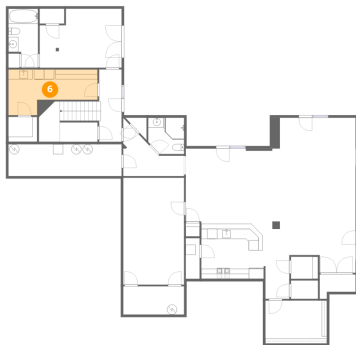
5 Floor 1 - Bath



Dimensions: 5'11" x 11'9"
Area: 62 sq. ft
Counted as living area: Yes

Heated: Yes
Finished: Yes
Enclosed: Yes
Contiguous: Yes
Permitted: Yes
Wet space: Yes
Addition: No
Conversion: No

6 Floor 1 - Laundry



Dimensions: 17'10" x 9'2"
Area: 126 sq. ft
Counted as living area: Yes

Heated: Yes
Finished: Yes
Enclosed: Yes
Contiguous: Yes
Permitted: Yes
Wet space: No
Addition: No
Conversion: No

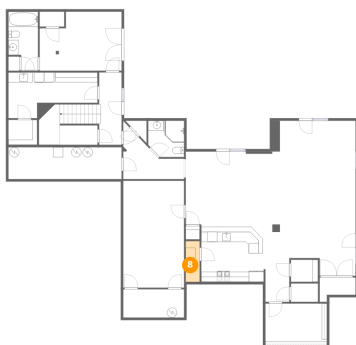
7 Floor 1 - Room



Dimensions: 5'5" x 3'8"
Area: 20 sq. ft
Counted as living area: Yes

Heated: Yes
Finished: Yes
Enclosed: Yes
Contiguous: Yes
Permitted: Yes
Wet space: No
Addition: No
Conversion: No

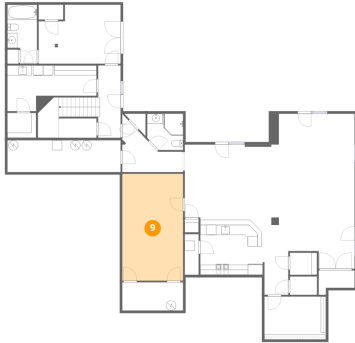
8 Floor 1 - Utility



Dimensions: 2'9" x 8'2"
Area: 23 sq. ft
Counted as living area: No

Heated: Yes
Finished: No
Enclosed: Yes
Contiguous: Yes
Permitted: Yes
Wet space: No
Addition: No
Conversion: No

9 Floor 1 - Sitting Room



Dimensions: 12'2" x 21'4"
Area: 260 sq. ft
Counted as living area: Yes

Heated: Yes
Finished: Yes
Enclosed: Yes
Contiguous: Yes
Permitted: Yes
Wet space: No
Addition: No
Conversion: No

10 Floor 1 - Utility



Dimensions: 22'8" x 6'4"
Area: 144 sq. ft
Counted as living area: No

Heated: Yes
Finished: No
Enclosed: Yes
Contiguous: Yes
Permitted: Yes
Wet space: No
Addition: No
Conversion: No

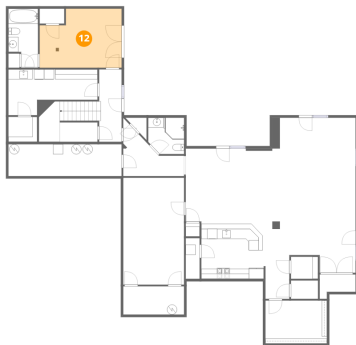
11 Floor 1 - Room



Dimensions: 5'5" x 4'5"
Area: 24 sq. ft
Counted as living area: Yes

Heated: Yes
Finished: Yes
Enclosed: Yes
Contiguous: Yes
Permitted: Yes
Wet space: No
Addition: No
Conversion: No

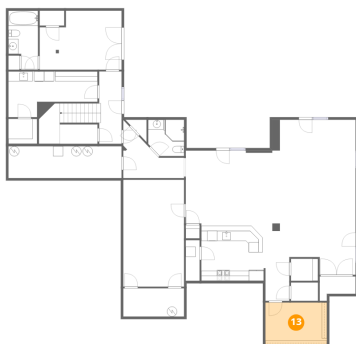
12 Floor 1 - Bedroom



Dimensions: 16'5" x 11'10"
Area: 176 sq. ft
Counted as living area: Yes

Heated: Yes
Finished: Yes
Enclosed: Yes
Contiguous: Yes
Permitted: Yes
Wet space: No
Addition: No
Conversion: No

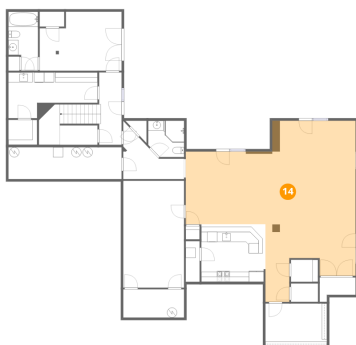
13 Floor 1 - W.I.C.



Dimensions: 12'4" x 8'7"
Area: 106 sq. ft
Counted as living area: Yes

Heated: Yes
Finished: Yes
Enclosed: Yes
Contiguous: Yes
Permitted: Yes
Wet space: No
Addition: No
Conversion: No

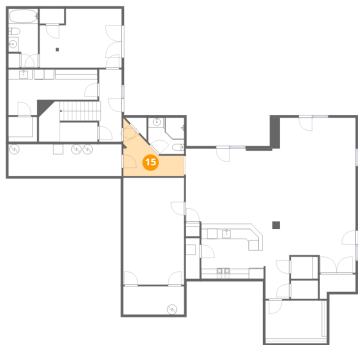
14 Floor 1 - Recreation Room



Dimensions: 34'0" x 36'3"
Area: 786 sq. ft
Counted as living area: Yes

Heated: Yes
Finished: Yes
Enclosed: Yes
Contiguous: Yes
Permitted: Yes
Wet space: No
Addition: No
Conversion: No

15 Floor 1 - Hall



Dimensions: 12'2" x 10'10"
Area: 76 sq. ft
Counted as living area: Yes

Heated: Yes
Finished: Yes
Enclosed: Yes
Contiguous: Yes
Permitted: Yes
Wet space: No
Addition: No
Conversion: No

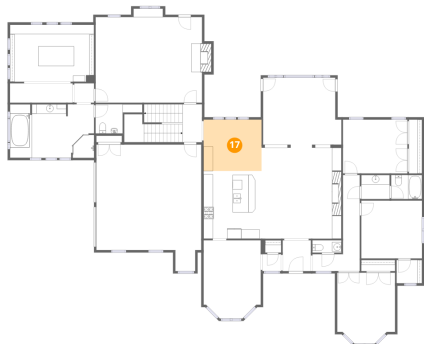
16 Floor 2 - Dining Room



Dimensions: 12'2" x 16'8"
Area: 189 sq. ft
Counted as living area: Yes

Heated: Yes
Finished: Yes
Enclosed: Yes
Contiguous: Yes
Permitted: Yes
Wet space: No
Addition: No
Conversion: No

17 Floor 2 - Breakfast Nook



Dimensions: 12'4" x 10'11"
Area: 135 sq. ft
Counted as living area: Yes

Heated: Yes
Finished: Yes
Enclosed: Yes
Contiguous: Yes
Permitted: Yes
Wet space: No
Addition: No
Conversion: No

18 Floor 2 - Bath



Dimensions: 6'2" x 2'7"
Area: 16 sq. ft
Counted as living area: Yes

Heated: Yes
Finished: Yes
Enclosed: Yes
Contiguous: Yes
Permitted: Yes
Wet space: Yes
Addition: No
Conversion: No

19 Floor 2 - Bedroom



Dimensions: 12'11" x 12'4"
Area: 159 sq. ft
Counted as living area: Yes

Heated: Yes
Finished: Yes
Enclosed: Yes
Contiguous: Yes
Permitted: Yes
Wet space: No
Addition: No
Conversion: No

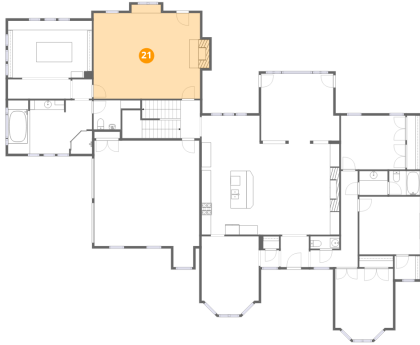
20 Floor 2 - Hall



Dimensions: 4'0" x 3'7"
Area: 14 sq. ft
Counted as living area: Yes

Heated: Yes
Finished: Yes
Enclosed: Yes
Contiguous: Yes
Permitted: Yes
Wet space: No
Addition: No
Conversion: No

21 Floor 2 - Primary Bedroom



Dimensions: 22'8" x 20'0"
Area: 436 sq. ft
Counted as living area: Yes

Heated: Yes
Finished: Yes
Enclosed: Yes
Contiguous: Yes
Permitted: Yes
Wet space: No
Addition: No
Conversion: No

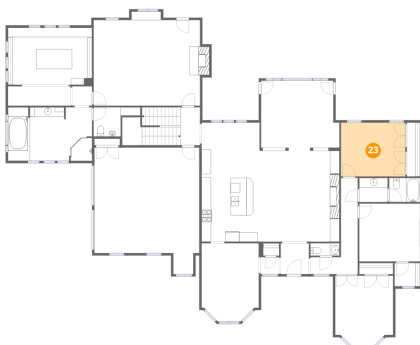
22 Floor 2 - W.I.C.



Dimensions: 2'9" x 11'5"
Area: 32 sq. ft
Counted as living area: Yes

Heated: Yes
Finished: Yes
Enclosed: Yes
Contiguous: Yes
Permitted: Yes
Wet space: No
Addition: No
Conversion: No

23 Floor 2 - Bedroom



Dimensions: 13'9" x 11'5"
Area: 157 sq. ft
Counted as living area: Yes

Heated: Yes
Finished: Yes
Enclosed: Yes
Contiguous: Yes
Permitted: Yes
Wet space: No
Addition: No
Conversion: No

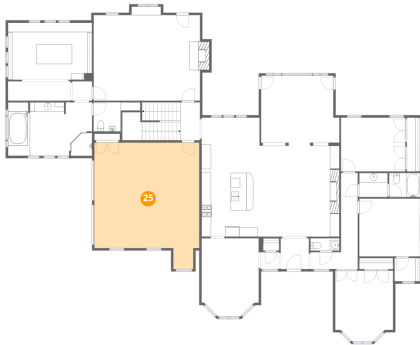
24 Floor 2 - Hall



Dimensions: 10'1" x 20'5"
Area: 96 sq. ft
Counted as living area: Yes

Heated: Yes
Finished: Yes
Enclosed: Yes
Contiguous: Yes
Permitted: Yes
Wet space: No
Addition: No
Conversion: No

25 Floor 2 - Garage



Dimensions: 22'4" x 26'11"
Area: 519 sq. ft
Counted as living area: No

Heated: No
Finished: No
Enclosed: Yes
Contiguous: Yes
Permitted: Yes
Wet space: No
Addition: No
Conversion: No

26 Floor 2 - Primary Bath



Dimensions: 17'11" x 11'4"
Area: 201 sq. ft
Counted as living area: Yes

Heated: Yes
Finished: Yes
Enclosed: Yes
Contiguous: Yes
Permitted: Yes
Wet space: Yes
Addition: No
Conversion: No

27 Floor 2 - Hall



Dimensions: 13'4" x 4'2"
Area: 55 sq. ft
Counted as living area: Yes

Heated: Yes
Finished: Yes
Enclosed: Yes
Contiguous: Yes
Permitted: Yes
Wet space: No
Addition: No
Conversion: No

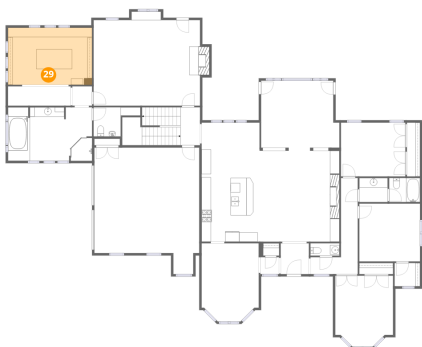
28 Floor 2 - Bath



Dimensions: 9'11" x 6'2"
Area: 43 sq. ft
Counted as living area: Yes

Heated: Yes
Finished: Yes
Enclosed: Yes
Contiguous: Yes
Permitted: Yes
Wet space: No
Addition: No
Conversion: No

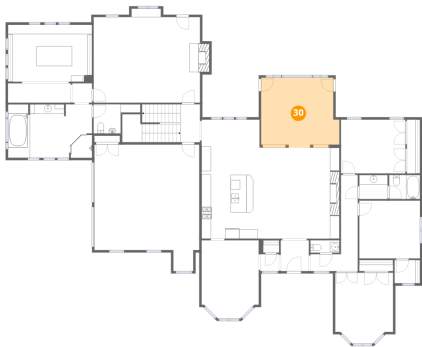
29 Floor 2 - W.I.C.



Dimensions: 17'11" x 12'2"
Area: 217 sq. ft
Counted as living area: Yes

Heated: Yes
Finished: Yes
Enclosed: Yes
Contiguous: Yes
Permitted: Yes
Wet space: No
Addition: No
Conversion: No

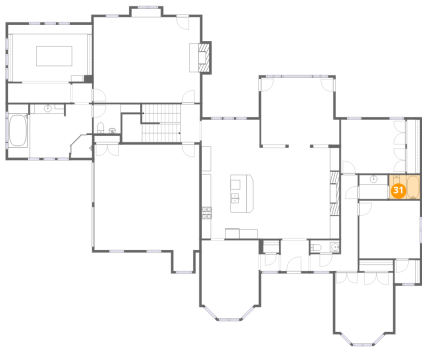
30 Floor 2 - Sun Room



Dimensions: 16'8" x 14'11"
Area: 236 sq. ft
Counted as living area: Yes

Heated: Yes
Finished: Yes
Enclosed: Yes
Contiguous: Yes
Permitted: Yes
Wet space: No
Addition: No
Conversion: No

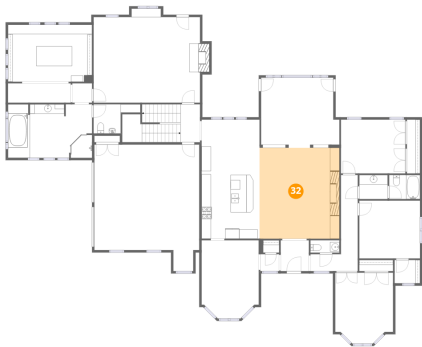
31 Floor 2 - Bath



Dimensions: 6'7" x 5'1"
Area: 34 sq. ft
Counted as living area: Yes

Heated: Yes
Finished: Yes
Enclosed: Yes
Contiguous: Yes
Permitted: Yes
Wet space: Yes
Addition: No
Conversion: No

32 Floor 2 - Living Room



Dimensions: 17'0" x 19'3"
Area: 328 sq. ft
Counted as living area: Yes

Heated: Yes
Finished: Yes
Enclosed: Yes
Contiguous: Yes
Permitted: Yes
Wet space: No
Addition: No
Conversion: No

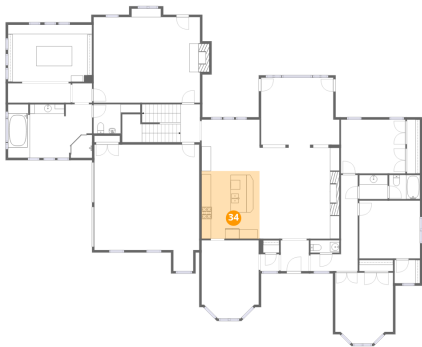
33 Floor 2 - Bath



Dimensions: 6'0" x 5'1"
Area: 31 sq. ft
Counted as living area: Yes

Heated: Yes
Finished: Yes
Enclosed: Yes
Contiguous: Yes
Permitted: Yes
Wet space: Yes
Addition: No
Conversion: No

34 Floor 2 - Kitchen



Dimensions: 12'4" x 14'5"
Area: 177 sq. ft
Counted as living area: Yes

Heated: Yes
Finished: Yes
Enclosed: Yes
Contiguous: Yes
Permitted: Yes
Wet space: No
Addition: No
Conversion: No

35 Floor 2 - Hall



Dimensions: 4'2" x 8'1"
Area: 123 sq. ft
Counted as living area: Yes

Heated: Yes
Finished: Yes
Enclosed: Yes
Contiguous: Yes
Permitted: Yes
Wet space: No
Addition: No
Conversion: No

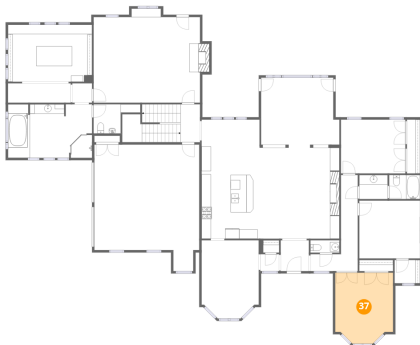
36 Floor 2 - Hall



Dimensions: 4'3" x 4'2"
Area: 17 sq. ft
Counted as living area: Yes

Heated: Yes
Finished: Yes
Enclosed: Yes
Contiguous: Yes
Permitted: Yes
Wet space: No
Addition: No
Conversion: No

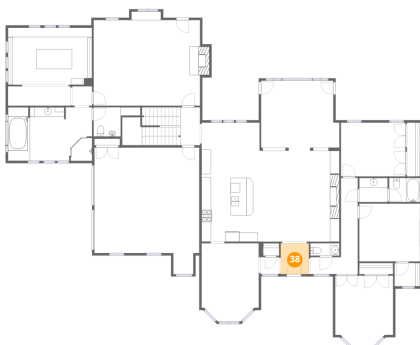
37 Floor 2 - Office



Dimensions: 12'4" x 15'1"
Area: 172 sq. ft
Counted as living area: Yes

Heated: Yes
Finished: Yes
Enclosed: Yes
Contiguous: Yes
Permitted: Yes
Wet space: No
Addition: No
Conversion: No

38 Floor 2 - Foyer



Dimensions: 6'0" x 6'7"
Area: 39 sq. ft
Counted as living area: Yes

Heated: Yes
Finished: Yes
Enclosed: Yes
Contiguous: Yes
Permitted: Yes
Wet space: No
Addition: No
Conversion: No

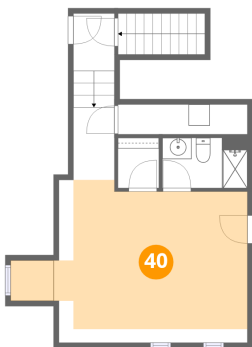
39 Floor 2 - W.I.C.



Dimensions: 5'5" x 4'11"
Area: 27 sq. ft
Counted as living area: Yes

Heated: Yes
Finished: Yes
Enclosed: Yes
Contiguous: Yes
Permitted: Yes
Wet space: No
Addition: No
Conversion: No

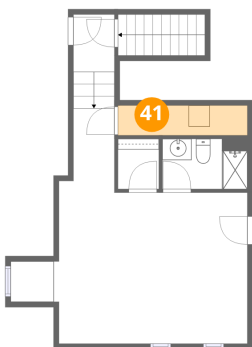
40 Floor 3 - Bedroom



Dimensions: 22'4" x 14'1"
Area: 239 sq. ft
Counted as living area: Yes

Heated: Yes
Finished: Yes
Enclosed: Yes
Contiguous: Yes
Permitted: Yes
Wet space: No
Addition: No
Conversion: No

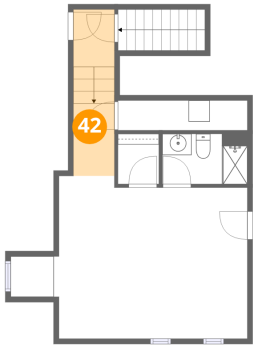
41 Floor 3 - Utility



Dimensions: 12'2" x 2'10"
Area: 34 sq. ft
Counted as living area: No

Heated: Yes
Finished: No
Enclosed: Yes
Contiguous: Yes
Permitted: Yes
Wet space: No
Addition: No
Conversion: No

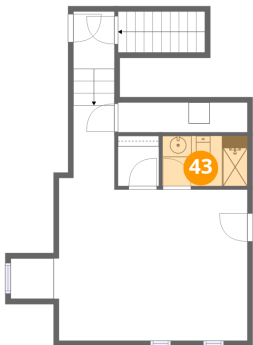
42 Floor 3 - Hall



Dimensions: 3'10" x 15'8"
Area: 61 sq. ft
Counted as living area: Yes

Heated: Yes
Finished: Yes
Enclosed: Yes
Contiguous: Yes
Permitted: Yes
Wet space: No
Addition: No
Conversion: No

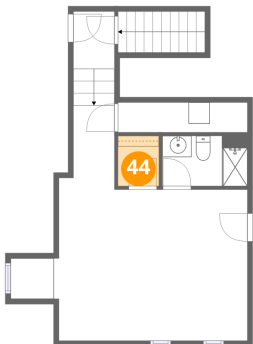
43 Floor 3 - Bath



Dimensions: 8'0" x 4'9"
Area: 38 sq. ft
Counted as living area: Yes

Heated: Yes
Finished: Yes
Enclosed: Yes
Contiguous: Yes
Permitted: Yes
Wet space: Yes
Addition: No
Conversion: No

44 Floor 3 - W.I.C.



Dimensions: 3'10" x 4'9"
Area: 18 sq. ft
Counted as living area: Yes

Heated: Yes
Finished: Yes
Enclosed: Yes
Contiguous: Yes
Permitted: Yes
Wet space: No
Addition: No
Conversion: No