

8627 Greig Street, Sodus Point, Wayne County, New York, United States, 14555



Property Summary

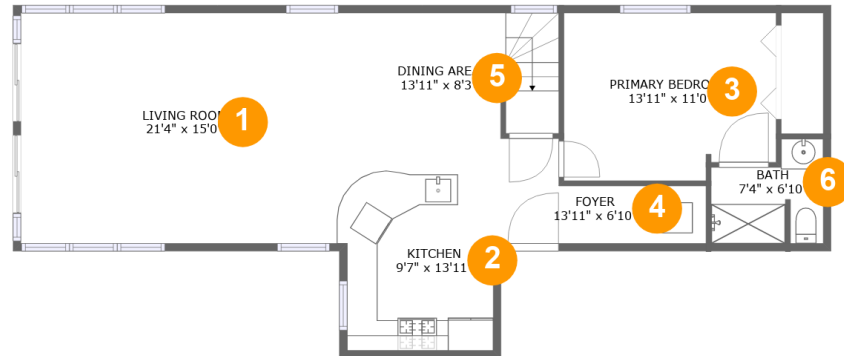
0 garages **3** bedrooms **2** bathrooms **0** half baths

2 floors

1,421 Gross Living Area sqft

1,645 total sqft

8627 Greig Street, Sodus Point, Wayne County, New York, United States, 14555



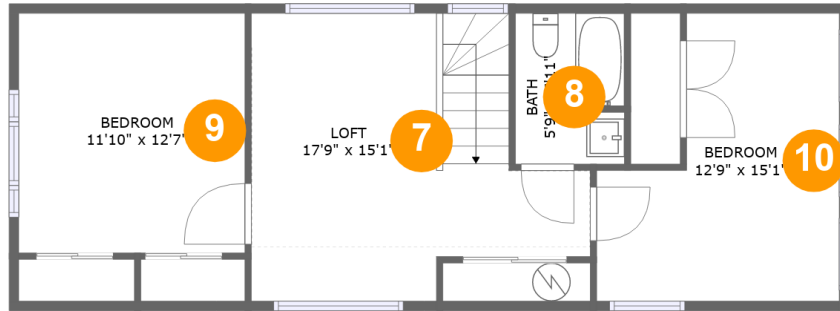
Room Dimensions

Floor 1

Total sqft: 936

Living area: 936

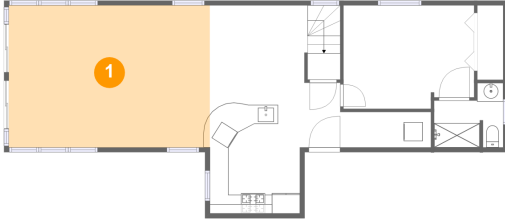
#	Room name	Dimensions	Area (sqft)	Counted as Living Area
1	Living Room	21'4" x 15'0"	323 sq. ft	Yes
2	Kitchen	9'7" x 13'11"	133 sq. ft	Yes
3	Primary Bedroom	13'11" x 11'0"	147 sq. ft	Yes
4	Foyer	13'11" x 6'10"	66 sq. ft	Yes
5	Dining Area	13'11" x 8'3"	112 sq. ft	Yes
6	Bath	7'4" x 6'10"	41 sq. ft	Yes

**8627 Greig Street, Sodus Point, Wayne County,
New York, United States, 14555****Room Dimensions****Floor 2****Total sqft: 709****Living area: 485**

#	Room name	Dimensions	Area (sqft)	Counted as Living Area
7	Loft	17'9" x 15'1"	166 sq. ft	Yes
8	Bath	5'9" x 7'11"	35 sq. ft	No
9	Bedroom	11'10" x 12'7"	126 sq. ft	No
10	Bedroom	12'9" x 15'1"	104 sq. ft	No

8627 Greig Street, Sodus Point, Wayne County, New York, United States, 14555

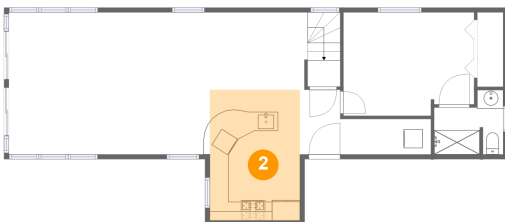
1 Floor 1 - Living Room



Dimensions: 21'4" x 15'0"
Area: 323 sq. ft
Counted as Living Area:
Yes

Heated: Yes
Finished: Yes
Enclosed: Yes
Contiguous:
Yes
Permitted: Yes
Wet Space: No
Addition: No
Conversion: No

2 Floor 1 - Kitchen

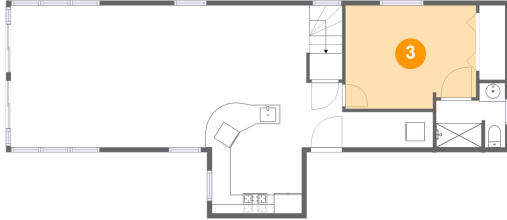


Dimensions: 9'7" x 13'11"
Area: 133 sq. ft
Counted as Living Area:
Yes

Heated: Yes
Finished: Yes
Enclosed: Yes
Contiguous:
Yes
Permitted: Yes
Wet Space: No
Addition: No
Conversion: No

**8627 Greig Street, Sodus Point, Wayne County,
New York, United States, 14555**

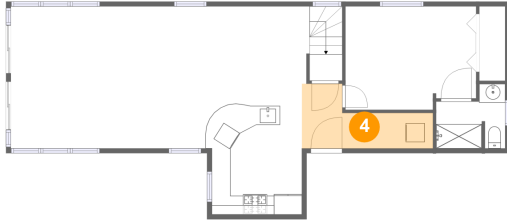
3 Floor 1 - Primary Bedroom



Dimensions: 13'11" x 11'0"
Area: 147 sq. ft
Counted as Living Area:
Yes

Heated: Yes
Finished: Yes
Enclosed: Yes
Contiguous:
Yes
Permitted: Yes
Wet Space: No
Addition: No
Conversion: No

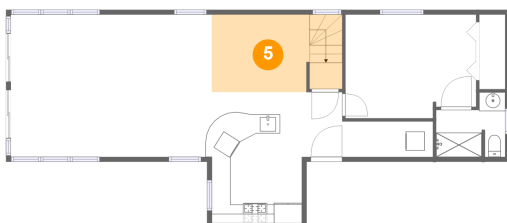
4 Floor 1 - Foyer



Dimensions: 13'11" x 6'10"
Area: 66 sq. ft
Counted as Living Area:
Yes

Heated: Yes
Finished: Yes
Enclosed: Yes
Contiguous:
Yes
Permitted: Yes
Wet Space: No
Addition: No
Conversion: No

5 Floor 1 - Dining Area

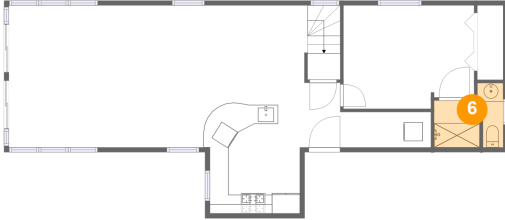


Dimensions: 13'11" x 8'3"
Area: 112 sq. ft
Counted as Living Area:
Yes

Heated: Yes
Finished: Yes
Enclosed: Yes
Contiguous:
Yes
Permitted: Yes
Wet Space: No
Addition: No
Conversion: No

8627 Greig Street, Sodus Point, Wayne County, New York, United States, 14555

6 Floor 1 - Bath



Dimensions: 7'4" x 6'10"
Area: 41 sq. ft
Counted as Living Area:
Yes

Heated: Yes
Finished: Yes
Enclosed: Yes
Contiguous:
Yes
Permitted: Yes
Wet Space: Yes
Addition: No
Conversion: No

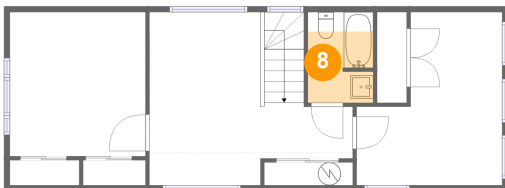
7 Floor 2 - Loft



Dimensions: 17'9" x 15'1"
Area: 166 sq. ft
Counted as Living Area:
Yes

Heated: Yes
Finished: Yes
Enclosed: Yes
Contiguous:
Yes
Permitted: Yes
Wet Space: No
Addition: No
Conversion: No

8 Floor 2 - Bath

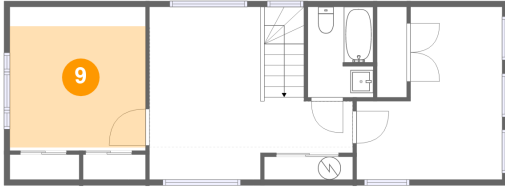


Dimensions: 5'9" x 7'11"
Area: 35 sq. ft
Counted as Living Area: No

Heated: Yes
Finished: Yes
Enclosed: Yes
Contiguous: Yes
Permitted: Yes
Wet Space: Yes
Addition: No
Conversion: No

**8627 Greig Street, Sodus Point, Wayne County,
New York, United States, 14555**

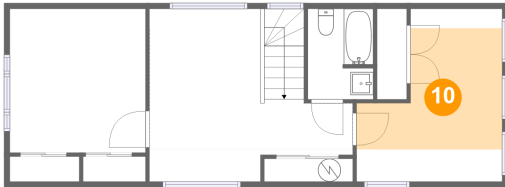
9 Floor 2 - Bedroom



Dimensions: 11'10" x 12'7"
Area: 126 sq. ft
Counted as Living Area: No

Heated: Yes
Finished: Yes
Enclosed: Yes
Contiguous: Yes
Permitted: Yes
Wet Space: No
Addition: No
Conversion: No

10 Floor 2 - Bedroom



Dimensions: 12'9" x 15'1"
Area: 104 sq. ft
Counted as Living Area: No

Heated: Yes
Finished: Yes
Enclosed: Yes
Contiguous: Yes
Permitted: Yes
Wet Space: No
Addition: No
Conversion: No