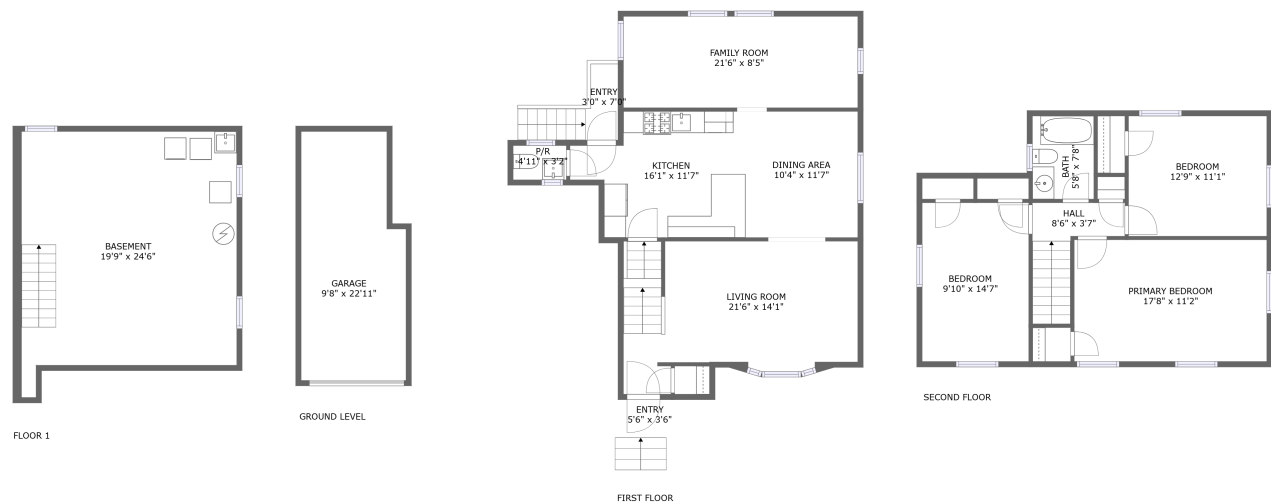




Home report


84 Linden Avenue, Verona, Essex County, New Jersey, United States, 07044




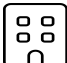
Property summary


 **1** Garages


 **3** Bedrooms

 **1** Bathrooms

 **1** Half baths

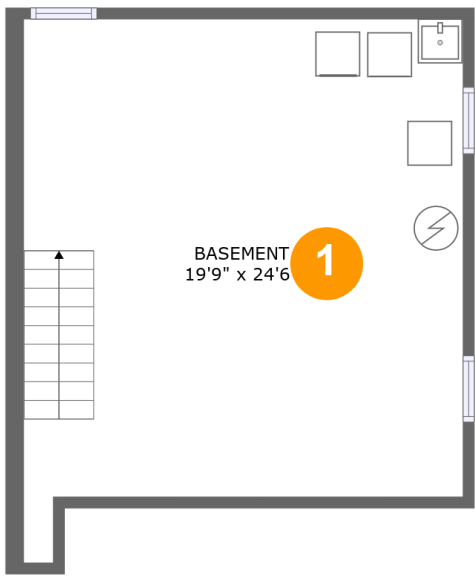
 **4** Floors

 **1,567** Gross living area sqft

 **2,293** Total sqft

Home report

84 Linden Avenue, Verona, Essex County, New Jersey, United States, 07044



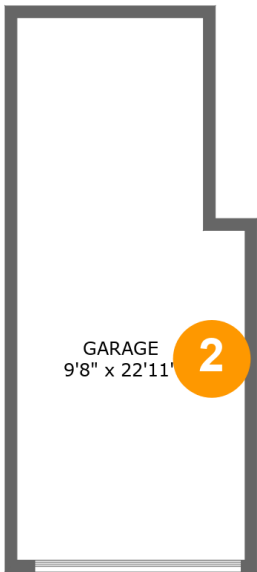
Room dimensions

Floor 1 Total sqft: 482    Living area: 0

#		Dimensions	sqft	Counted as living area
1	Basement	19'9" x 24'6"	429 sq. ft	No

Home report

84 Linden Avenue, Verona, Essex County, New Jersey, United States, 07044



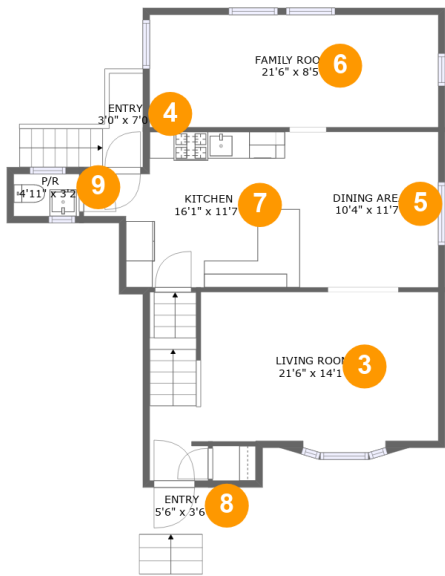
Room dimensions

Floor 2 Total sqft: 238    Living area: 0

#		Dimensions	sqft	Counted as living area
2	Garage	9'8" x 22'11"	205 sq. ft	No

Home report

84 Linden Avenue, Verona, Essex County, New Jersey, United States, 07044

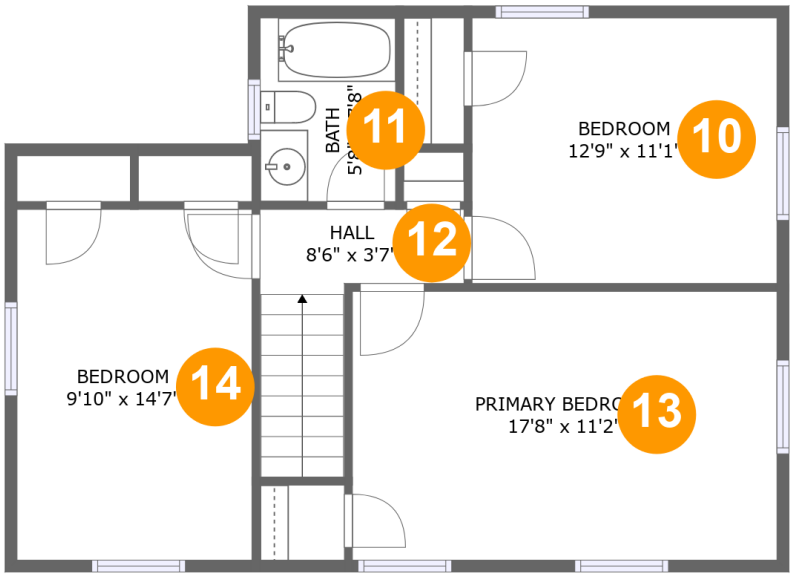


Room dimensions

Floor 3 Total sqft: 861 Living area: 855

#		Dimensions	sqft	Counted as living area
3	Living Room	21'6" x 14'1"	250 sq. ft	Yes
4	Entry	3'0" x 7'0"	19 sq. ft	Yes
5	Dining Area	10'4" x 11'7"	120 sq. ft	Yes
6	Family Room	21'6" x 8'5"	181 sq. ft	Yes
7	Kitchen	16'1" x 11'7"	155 sq. ft	Yes
8	Entry	5'6" x 3'6"	19 sq. ft	Yes
9	P/R	4'11" x 3'2"	15 sq. ft	Yes

84 Linden Avenue, Verona, Essex County, New Jersey, United States, 07044



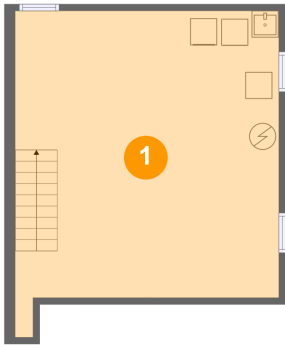
Room dimensions

Floor 4 Total sqft: 712    Living area: 712

#		Dimensions	sqft	Counted as living area
10	Bedroom	12'9" x 11'1"	141 sq. ft	Yes
11	Bath	5'8" x 7'8"	43 sq. ft	Yes
12	Hall	8'6" x 3'7"	55 sq. ft	Yes
13	Primary Bedroom	17'8" x 11'2"	198 sq. ft	Yes
14	Bedroom	9'10" x 14'7"	143 sq. ft	Yes

84 Linden Avenue, Verona, Essex County, New Jersey, United States, 07044

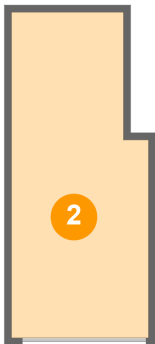
1 Floor 1 - Basement



Dimensions: 19'9" x 24'6"  
Area: 429 sq. ft  
Counted as living area: No

Heated: Yes  
Finished: No  
Enclosed: Yes  
Contiguous: Yes  
Permitted: Yes  
Wet space: No  
Addition: No  
Conversion: No

2 Floor 2 - Garage

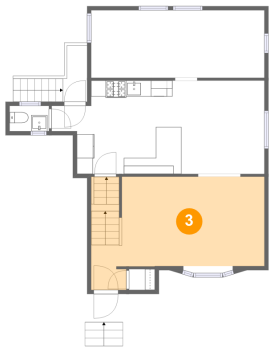


Dimensions: 9'8" x 22'11"  
Area: 205 sq. ft  
Counted as living area: No

Heated: No  
Finished: No  
Enclosed: Yes  
Contiguous: Yes  
Permitted: Yes  
Wet space: No  
Addition: No  
Conversion: No

84 Linden Avenue, Verona, Essex County, New Jersey, United States, 07044

3 Floor 3 - Living Room



Dimensions: 21'6" x 14'1"  
Area: 250 sq. ft  
Counted as living area: Yes

Heated: Yes  
Finished: Yes  
Enclosed: Yes  
Contiguous: Yes  
Permitted: Yes  
Wet space: No  
Addition: No  
Conversion: No

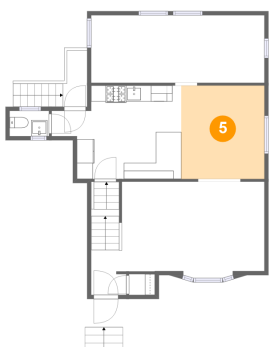
4 Floor 3 - Entry



Dimensions: 3'0" x 7'0"  
Area: 19 sq. ft  
Counted as living area: Yes

Heated: Yes  
Finished: Yes  
Enclosed: Yes  
Contiguous: Yes  
Permitted: Yes  
Wet space: No  
Addition: No  
Conversion: No

5 Floor 3 - Dining Area

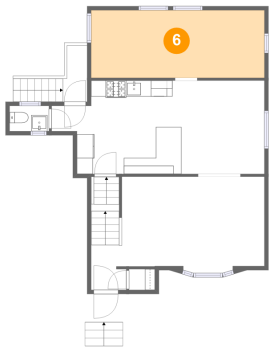


Dimensions: 10'4" x 11'7"  
Area: 120 sq. ft  
Counted as living area: Yes

Heated: Yes  
Finished: Yes  
Enclosed: Yes  
Contiguous: Yes  
Permitted: Yes  
Wet space: No  
Addition: No  
Conversion: No

84 Linden Avenue, Verona, Essex County, New Jersey, United States, 07044

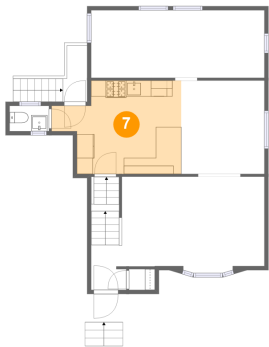
6 Floor 3 - Family Room



Dimensions: 21'6" x 8'5"  
Area: 181 sq. ft  
Counted as living area: Yes

Heated: Yes  
Finished: Yes  
Enclosed: Yes  
Contiguous: Yes  
Permitted: Yes  
Wet space: No  
Addition: No  
Conversion: No

7 Floor 3 - Kitchen



Dimensions: 16'1" x 11'7"  
Area: 155 sq. ft  
Counted as living area: Yes

Heated: Yes  
Finished: Yes  
Enclosed: Yes  
Contiguous: Yes  
Permitted: Yes  
Wet space: No  
Addition: No  
Conversion: No

8 Floor 3 - Entry



Dimensions: 5'6" x 3'6"  
Area: 19 sq. ft  
Counted as living area: Yes

Heated: Yes  
Finished: Yes  
Enclosed: Yes  
Contiguous: Yes  
Permitted: Yes  
Wet space: No  
Addition: No  
Conversion: No



## Home report

84 Linden Avenue, Verona, Essex County, New Jersey, United States, 07044

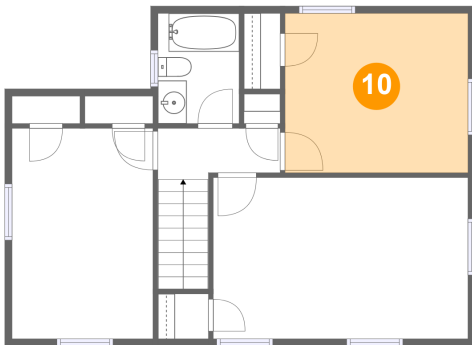
### 9 Floor 3 - P/R



Dimensions: 4'11" x 3'2"  
Area: 15 sq. ft  
Counted as living area: Yes

Heated: Yes  
Finished: Yes  
Enclosed: Yes  
Contiguous: Yes  
Permitted: Yes  
Wet space: Yes  
Addition: No  
Conversion: No

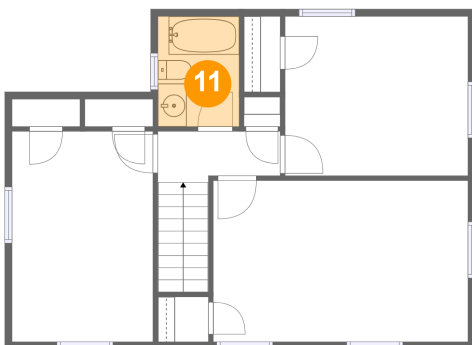
### 10 Floor 4 - Bedroom



Dimensions: 12'9" x 11'1"  
Area: 141 sq. ft  
Counted as living area: Yes

Heated: Yes  
Finished: Yes  
Enclosed: Yes  
Contiguous: Yes  
Permitted: Yes  
Wet space: No  
Addition: No  
Conversion: No

### 11 Floor 4 - Bath



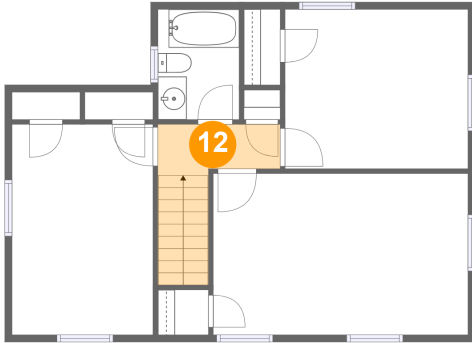
Dimensions: 5'8" x 7'8"  
Area: 43 sq. ft  
Counted as living area: Yes

Heated: Yes  
Finished: Yes  
Enclosed: Yes  
Contiguous: Yes  
Permitted: Yes  
Wet space: Yes  
Addition: No  
Conversion: No

## Home report

84 Linden Avenue, Verona, Essex County, New Jersey, United States, 07044

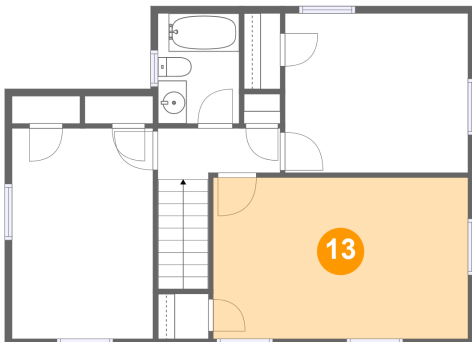
### 12 Floor 4 - Hall



Dimensions: 8'6" x 3'7"  
Area: 55 sq. ft  
Counted as living area: Yes

Heated: Yes  
Finished: Yes  
Enclosed: Yes  
Contiguous: Yes  
Permitted: Yes  
Wet space: No  
Addition: No  
Conversion: No

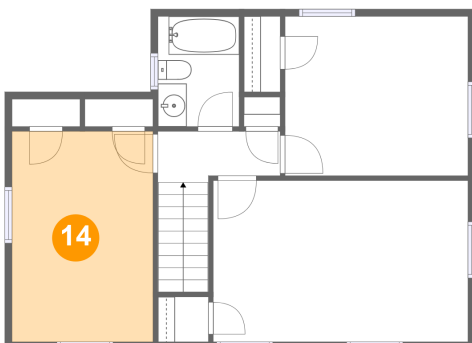
### 13 Floor 4 - Primary Bedroom



Dimensions: 17'8" x 11'2"  
Area: 198 sq. ft  
Counted as living area: Yes

Heated: Yes  
Finished: Yes  
Enclosed: Yes  
Contiguous: Yes  
Permitted: Yes  
Wet space: No  
Addition: No  
Conversion: No

### 14 Floor 4 - Bedroom



Dimensions: 9'10" x 14'7"  
Area: 143 sq. ft  
Counted as living area: Yes

Heated: Yes  
Finished: Yes  
Enclosed: Yes  
Contiguous: Yes  
Permitted: Yes  
Wet space: No  
Addition: No  
Conversion: No