


Home report

322 Bascule Drive, Lorain, Lorain County, Ohio, United States, 44052




Property summary




1

Garages




3

Bedrooms




2

Bathrooms




1

Half baths




3

Floors



1,974

Gross living area sqft

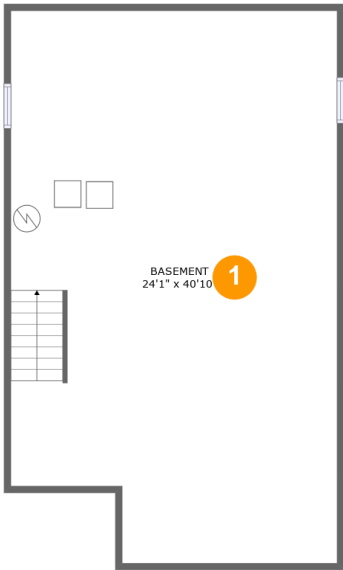


3,852

Total sqft

Home report

322 Bascule Drive, Lorain, Lorain County, Ohio, United States, 44052



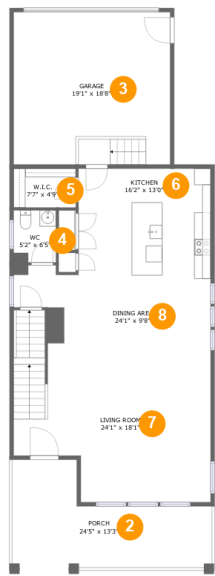
Room dimensions

Floor 1 Total sqft: 1003    Living area: 0

#		Max Dimensions	sqft	Included
1	Basement	24'1" x 40'10"	937 sq. ft	No

Home report

322 Bascule Drive, Lorain, Lorain County, Ohio, United States, 44052



Room dimensions

Floor 2

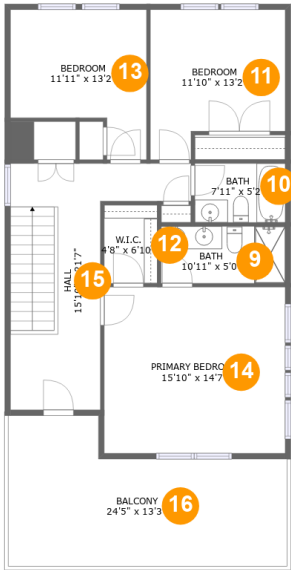
Total sqft: 1618

Living area: 1003

#		Max Dimensions	sqft	Included
2	Porch	24'5" x 13'3"	229 sq. ft	No
3	Garage	19'1" x 18'8"	357 sq. ft	No
4	WC	5'2" x 6'5"	33 sq. ft	Yes
5	W.I.C.	7'7" x 4'9"	36 sq. ft	Yes
6	Kitchen	16'2" x 13'0"	210 sq. ft	Yes
7	Living Room	24'1" x 18'1"	409 sq. ft	Yes
8	Dining Area	24'1" x 9'8"	217 sq. ft	Yes

Home report

322 Bascule Drive, Lorain, Lorain County, Ohio, United States, 44052



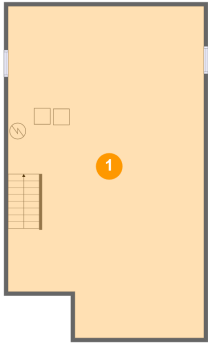
Room dimensions

Floor 3 Total sqft: 1231 Living area: 971

#		Max Dimensions	sqft	Included
9	Bath	10'11" x 5'0"	54 sq. ft	Yes
10	Bath	7'11" x 5'2"	41 sq. ft	Yes
11	Bedroom	11'10" x 13'2"	135 sq. ft	Yes
12	W.I.C.	4'8" x 6'10"	32 sq. ft	Yes
13	Bedroom	11'11" x 13'2"	126 sq. ft	Yes
14	Primary Bedroom	15'10" x 14'7"	232 sq. ft	Yes
15	Hall	15'10" x 21'7"	197 sq. ft	Yes
16	Balcony	24'5" x 13'3"	260 sq. ft	No

322 Bascule Drive, Lorain, Lorain County, Ohio, United States, 44052

1 Floor 1 - Basement



Max Dimensions: 24'1" x 40'10"  
Calculated Area: 937 sq. ft  
Included: No

Heated: Yes  
Finished: No  
Enclosed: Yes  
Contiguous: Yes  
Permitted: Yes  
Wet space: No  
Addition: No  
Conversion: No

2 Floor 2 - Porch



Max Dimensions: 24'5" x 13'3"  
Calculated Area: 229 sq. ft  
Included: No

Heated: No  
Finished: Yes  
Enclosed: No  
Contiguous: Yes  
Permitted: Yes  
Wet space: No  
Addition: No  
Conversion: No

322 Bascule Drive, Lorain, Lorain County, Ohio, United States, 44052

3 Floor 2 - Garage



Max Dimensions: 19'1" x 18'8"  
Calculated Area: 357 sq. ft  
Included: No

Heated: No  
Finished: No  
Enclosed: Yes  
Contiguous: Yes  
Permitted: Yes  
Wet space: No  
Addition: No  
Conversion: No

4 Floor 2 - WC



Max Dimensions: 5'2" x 6'5"  
Calculated Area: 33 sq. ft  
Included: Yes

Heated: Yes  
Finished: Yes  
Enclosed: Yes  
Contiguous: Yes  
Permitted: Yes  
Wet space: Yes  
Addition: No  
Conversion: No

5 Floor 2 - W.I.C.



Max Dimensions: 7'7" x 4'9"  
Calculated Area: 36 sq. ft  
Included: Yes

Heated: Yes  
Finished: Yes  
Enclosed: Yes  
Contiguous: Yes  
Permitted: Yes  
Wet space: No  
Addition: No  
Conversion: No

322 Bascule Drive, Lorain, Lorain County, Ohio, United States, 44052

6 Floor 2 - Kitchen



Max Dimensions: 16'2" x 13'0"  
Calculated Area: 210 sq. ft  
Included: Yes

Heated: Yes  
Finished: Yes  
Enclosed: Yes  
Contiguous: Yes  
Permitted: Yes  
Wet space: No  
Addition: No  
Conversion: No

7 Floor 2 - Living Room



Max Dimensions: 24'1" x 18'1"  
Calculated Area: 409 sq. ft  
Included: Yes

Heated: Yes  
Finished: Yes  
Enclosed: Yes  
Contiguous: Yes  
Permitted: Yes  
Wet space: No  
Addition: No  
Conversion: No

8 Floor 2 - Dining Area

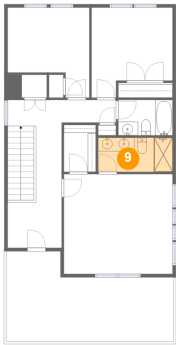


Max Dimensions: 24'1" x 9'8"  
Calculated Area: 217 sq. ft  
Included: Yes

Heated: Yes  
Finished: Yes  
Enclosed: Yes  
Contiguous: Yes  
Permitted: Yes  
Wet space: No  
Addition: No  
Conversion: No

322 Bascule Drive, Lorain, Lorain County, Ohio, United States, 44052

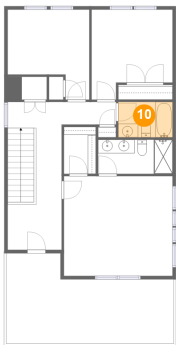
9 Floor 3 - Bath



Max Dimensions: 10'11" x 5'0"  
Calculated Area: 54 sq. ft  
Included: Yes

Heated: Yes  
Finished: Yes  
Enclosed: Yes  
Contiguous: Yes  
Permitted: Yes  
Wet space: Yes  
Addition: No  
Conversion: No

10 Floor 3 - Bath



Max Dimensions: 7'11" x 5'2"  
Calculated Area: 41 sq. ft  
Included: Yes

Heated: Yes  
Finished: Yes  
Enclosed: Yes  
Contiguous: Yes  
Permitted: Yes  
Wet space: Yes  
Addition: No  
Conversion: No

11 Floor 3 - Bedroom



Max Dimensions: 11'10" x 13'2"  
Calculated Area: 135 sq. ft  
Included: Yes

Heated: Yes  
Finished: Yes  
Enclosed: Yes  
Contiguous: Yes  
Permitted: Yes  
Wet space: No  
Addition: No  
Conversion: No



322 Bascule Drive, Lorain, Lorain County, Ohio, United States, 44052

12 Floor 3 - W.I.C.



Max Dimensions: 4'8" x 6'10"  
Calculated Area: 32 sq. ft  
Included: Yes

Heated: Yes  
Finished: Yes  
Enclosed: Yes  
Contiguous: Yes  
Permitted: Yes  
Wet space: No  
Addition: No  
Conversion: No

13 Floor 3 - Bedroom



Max Dimensions: 11'11" x 13'2"  
Calculated Area: 126 sq. ft  
Included: Yes

Heated: Yes  
Finished: Yes  
Enclosed: Yes  
Contiguous: Yes  
Permitted: Yes  
Wet space: No  
Addition: No  
Conversion: No

14 Floor 3 - Primary Bedroom

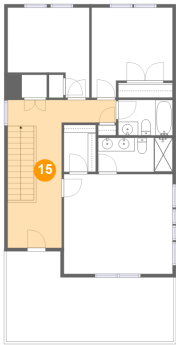


Max Dimensions: 15'10" x 14'7"  
Calculated Area: 232 sq. ft  
Included: Yes

Heated: Yes  
Finished: Yes  
Enclosed: Yes  
Contiguous: Yes  
Permitted: Yes  
Wet space: No  
Addition: No  
Conversion: No

322 Bascule Drive, Lorain, Lorain County, Ohio, United States, 44052

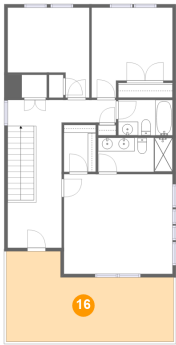
15 Floor 3 - Hall



Max Dimensions: 15'10" x 21'7"  
Calculated Area: 197 sq. ft  
Included: Yes

Heated: Yes  
Finished: Yes  
Enclosed: Yes  
Contiguous: Yes  
Permitted: Yes  
Wet space: No  
Addition: No  
Conversion: No

16 Floor 3 - Balcony



Max Dimensions: 24'5" x 13'3"  
Calculated Area: 260 sq. ft  
Included: No

Heated: No  
Finished: Yes  
Enclosed: No  
Contiguous: Yes  
Permitted: Yes  
Wet space: No  
Addition: No  
Conversion: No