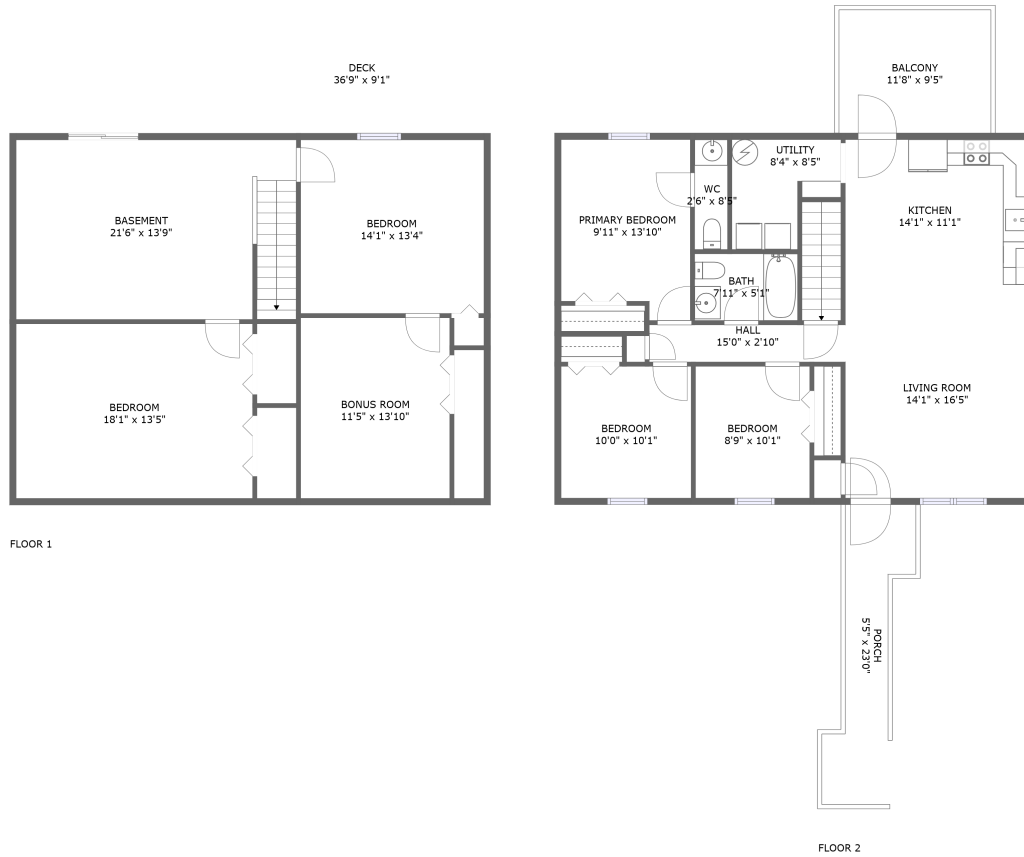


1826 Padbury Avenue Southeast, Riverdale, Roanoke, Roanoke city, Virginia, United States, 24014



Property summary

 **0** Garages

 **5** Bedrooms

 **1** Bathrooms

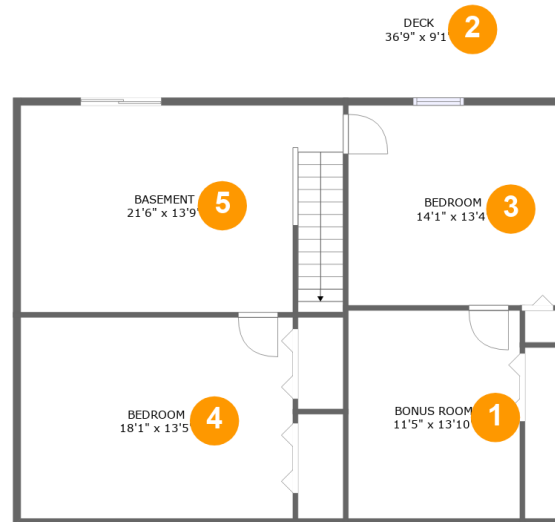
 **1** Half baths

 **2** Floors

 **2,094** Gross living area sqft

 **2,502** Total sqft

1826 Padbury Avenue Southeast, Riverdale, Roanoke, Roanoke city, Virginia, United States, 24014



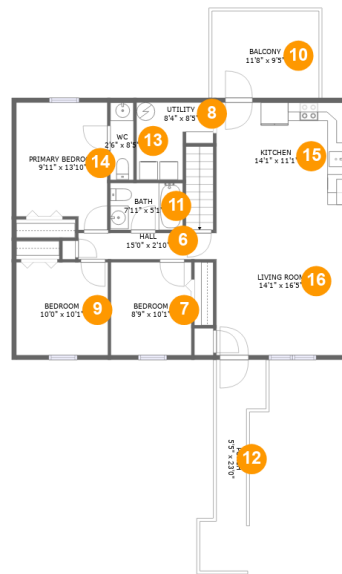
Room dimensions

Floor 1

Total sqft: 1246 Living area: 1044

#		Dimensions	sqft	Counted as living area
1	Bonus Room	11'5" x 13'10"	158 sq. ft	Yes
2	Deck	36'9" x 9'1"	196 sq. ft	No
3	Bedroom	14'1" x 13'4"	187 sq. ft	Yes
4	Bedroom	18'1" x 13'5"	243 sq. ft	Yes
5	Basement	21'6" x 13'9"	294 sq. ft	Yes

1826 Padbury Avenue Southeast, Riverdale, Roanoke, Roanoke city, Virginia, United States, 24014



Room dimensions

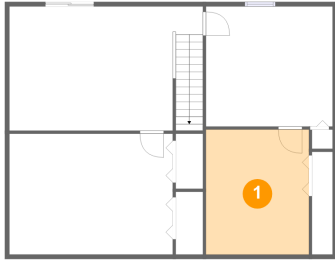
Floor 2

Total sqft: 1256 Living area: 1050

#		Dimensions	sqft	Counted as living area
6	Hall	15'0" x 2'10"	43 sq. ft	Yes
7	Bedroom	8'9" x 10'1"	88 sq. ft	Yes
8	Utility	8'4" x 8'5"	57 sq. ft	Yes
9	Bedroom	10'0" x 10'1"	101 sq. ft	Yes
10	Balcony	11'8" x 9'5"	110 sq. ft	No
11	Bath	7'11" x 5'1"	40 sq. ft	Yes
12	Porch	5'5" x 23'0"	96 sq. ft	No
13	WC	2'6" x 8'5"	21 sq. ft	Yes
14	Primary Bedroom	9'11" x 13'10"	127 sq. ft	Yes
15	Kitchen	14'1" x 11'1"	156 sq. ft	Yes
16	Living Room	14'1" x 16'5"	231 sq. ft	Yes

**1826 Padbury Avenue Southeast, Riverdale, Roanoke,
Roanoke city, Virginia, United States, 24014**

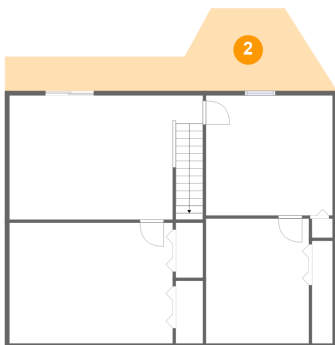
1 Floor 1 - Bonus Room



Dimensions: 11'5" x 13'10"
Area: 158 sq. ft
Counted as living area: Yes

Heated: Yes
Finished: Yes
Enclosed: Yes
Contiguous: Yes
Permitted: Yes
Wet space: No
Addition: No
Conversion: No

2 Floor 1 - Deck

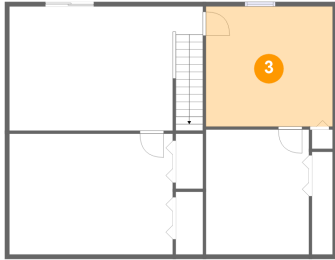


Dimensions: 36'9" x 9'1"
Area: 196 sq. ft
Counted as living area: No

Heated: No
Finished: Yes
Enclosed: No
Contiguous: Yes
Permitted: Yes
Wet space: No
Addition: No
Conversion: No

1826 Padbury Avenue Southeast, Riverdale, Roanoke, Roanoke city, Virginia, United States, 24014

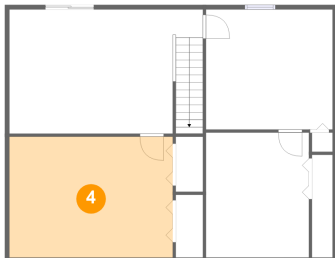
3 Floor 1 - Bedroom



Dimensions: 14'1" x 13'4"
Area: 187 sq. ft
Counted as living area: Yes

Heated: Yes
Finished: Yes
Enclosed: Yes
Contiguous: Yes
Permitted: Yes
Wet space: No
Addition: No
Conversion: No

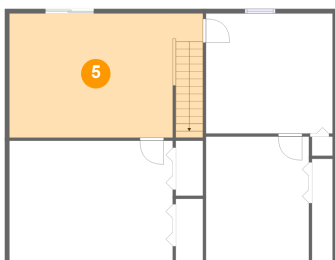
4 Floor 1 - Bedroom



Dimensions: 18'1" x 13'5"
Area: 243 sq. ft
Counted as living area: Yes

Heated: Yes
Finished: Yes
Enclosed: Yes
Contiguous: Yes
Permitted: Yes
Wet space: No
Addition: No
Conversion: No

5 Floor 1 - Basement

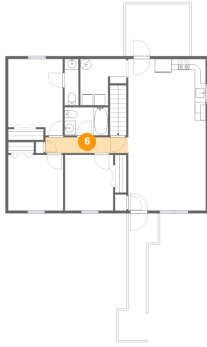


Dimensions: 21'6" x 13'9"
Area: 294 sq. ft
Counted as living area: Yes

Heated: Yes
Finished: Yes
Enclosed: Yes
Contiguous: Yes
Permitted: Yes
Wet space: No
Addition: No
Conversion: No

**1826 Padbury Avenue Southeast, Riverdale, Roanoke,
Roanoke city, Virginia, United States, 24014**

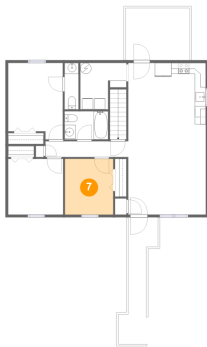
6 Floor 2 - Hall



Dimensions: 15'0" x 2'10"
Area: 43 sq. ft
Counted as living area: Yes

Heated: Yes
Finished: Yes
Enclosed: Yes
Contiguous: Yes
Permitted: Yes
Wet space: No
Addition: No
Conversion: No

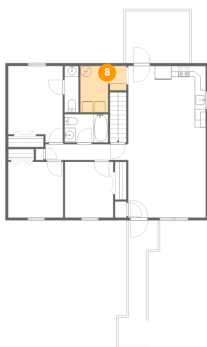
7 Floor 2 - Bedroom



Dimensions: 8'9" x 10'1"
Area: 88 sq. ft
Counted as living area: Yes

Heated: Yes
Finished: Yes
Enclosed: Yes
Contiguous: Yes
Permitted: Yes
Wet space: No
Addition: No
Conversion: No

8 Floor 2 - Utility

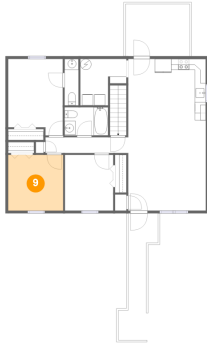


Dimensions: 8'4" x 8'5"
Area: 57 sq. ft
Counted as living area: Yes

Heated: Yes
Finished: Yes
Enclosed: Yes
Contiguous: Yes
Permitted: Yes
Wet space: No
Addition: No
Conversion: No

1826 Padbury Avenue Southeast, Riverdale, Roanoke, Roanoke city, Virginia, United States, 24014

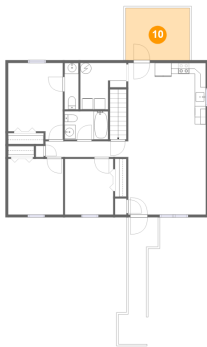
9 Floor 2 - Bedroom



Dimensions: 10'0" x 10'1"
Area: 101 sq. ft
Counted as living area: Yes

Heated: Yes
Finished: Yes
Enclosed: Yes
Contiguous: Yes
Permitted: Yes
Wet space: No
Addition: No
Conversion: No

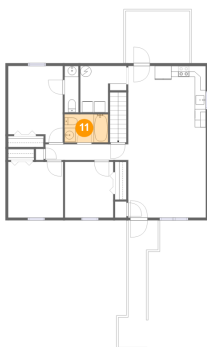
10 Floor 2 - Balcony



Dimensions: 11'8" x 9'5"
Area: 110 sq. ft
Counted as living area: No

Heated: No
Finished: Yes
Enclosed: No
Contiguous: Yes
Permitted: Yes
Wet space: No
Addition: No
Conversion: No

11 Floor 2 - Bath

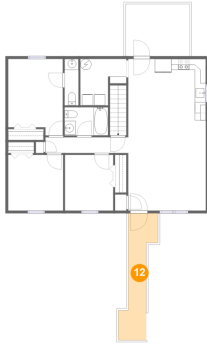


Dimensions: 7'11" x 5'1"
Area: 40 sq. ft
Counted as living area: Yes

Heated: Yes
Finished: Yes
Enclosed: Yes
Contiguous: Yes
Permitted: Yes
Wet space: Yes
Addition: No
Conversion: No

**1826 Padbury Avenue Southeast, Riverdale, Roanoke,
Roanoke city, Virginia, United States, 24014**

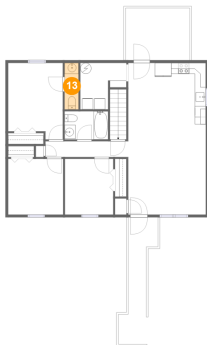
12 Floor 2 - Porch



Dimensions: 5'5" x 23'0"
Area: 96 sq. ft
Counted as living area: No

Heated: No
Finished: Yes
Enclosed: No
Contiguous: Yes
Permitted: Yes
Wet space: No
Addition: No
Conversion: No

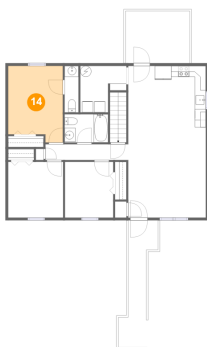
13 Floor 2 - WC



Dimensions: 2'6" x 8'5"
Area: 21 sq. ft
Counted as living area: Yes

Heated: Yes
Finished: Yes
Enclosed: Yes
Contiguous: Yes
Permitted: Yes
Wet space: Yes
Addition: No
Conversion: No

14 Floor 2 - Primary Bedroom

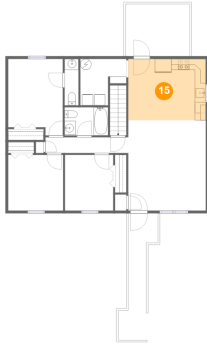


Dimensions: 9'11" x 13'10"
Area: 127 sq. ft
Counted as living area: Yes

Heated: Yes
Finished: Yes
Enclosed: Yes
Contiguous: Yes
Permitted: Yes
Wet space: No
Addition: No
Conversion: No

**1826 Padbury Avenue Southeast, Riverdale, Roanoke,
Roanoke city, Virginia, United States, 24014**

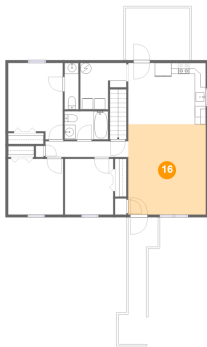
15 Floor 2 - Kitchen



Dimensions: 14'1" x 11'1"
Area: 156 sq. ft
Counted as living area: Yes

Heated: Yes
Finished: Yes
Enclosed: Yes
Contiguous: Yes
Permitted: Yes
Wet space: No
Addition: No
Conversion: No

16 Floor 2 - Living Room



Dimensions: 14'1" x 16'5"
Area: 231 sq. ft
Counted as living area: Yes

Heated: Yes
Finished: Yes
Enclosed: Yes
Contiguous: Yes
Permitted: Yes
Wet space: No
Addition: No
Conversion: No