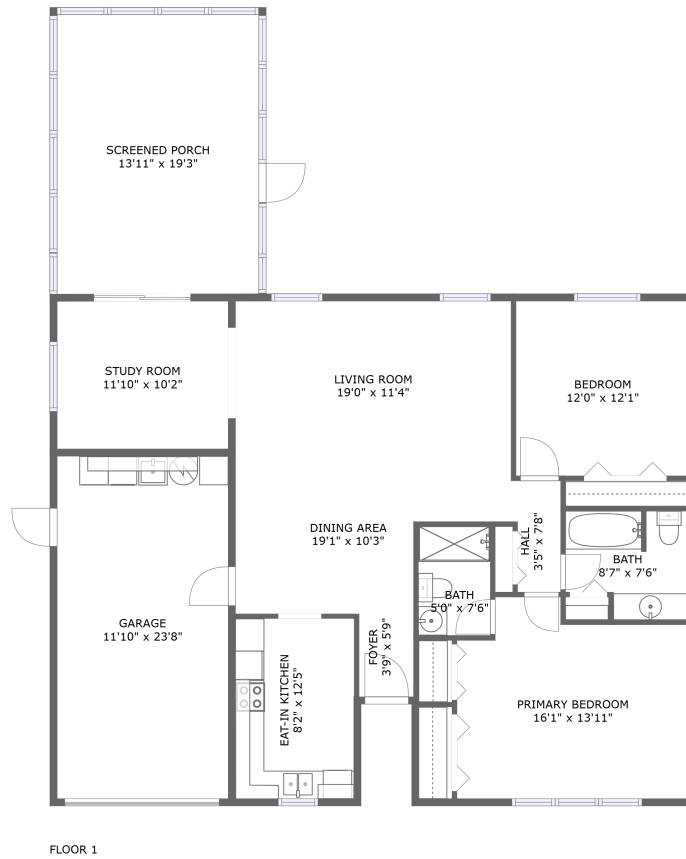



1642 East Dorchester Court, Highland Lakes, Palm Harbor, Pinellas County, Florida, United



Property Summary

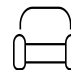
 1 floors

 2 bedrooms

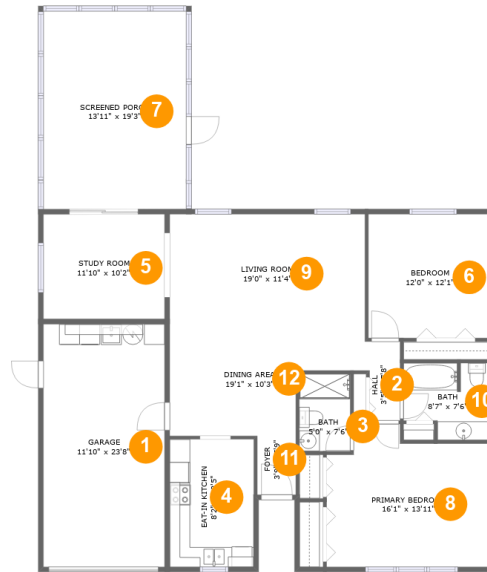
 2 bathrooms

 1,855 total sqft

 1 garages

 1,261 Gross Living Area sqft

1642 East Dorchester Court, Highland Lakes, Palm Harbor, Pinellas County, Florida, United



Room Dimensions

Floor 1

Total sqft: 1855

Living area: 1261

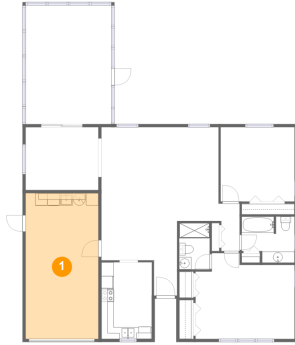
#	Room name	Dimensions	Area (sqft)	Counted as Living Area
1	Garage	11'10" x 23'8"	280 sq. ft	No
2	Hall	3'5" x 7'8"	24 sq. ft	Yes
3	Bath	5'0" x 7'6"	37 sq. ft	Yes
4	Eat-in Kitchen	8'2" x 12'5"	102 sq. ft	Yes
5	Study Room	11'10" x 10'2"	121 sq. ft	Yes
6	Bedroom	12'0" x 12'1"	145 sq. ft	Yes
7	Screened Porch	13'11" x 19'3"	269 sq. ft	No
8	Primary Bedroom	16'1" x 13'11"	200 sq. ft	Yes
9	Living Room	19'0" x 11'4"	216 sq. ft	Yes
10	Bath	8'7" x 7'6"	57 sq. ft	Yes
11	Foyer	3'9" x 5'9"	22 sq. ft	Yes

1642 East Dorchester Court, Highland Lakes, Palm Harbor, Pinellas County, Florida, United

#	Room name	Dimensions	Area (sqft)	Counted as Living Area
12	Dining Area	19'1" x 10'3"	152 sq. ft	Yes

1642 East Dorchester Court, Highland Lakes, Palm Harbor, Pinellas County, Florida, United

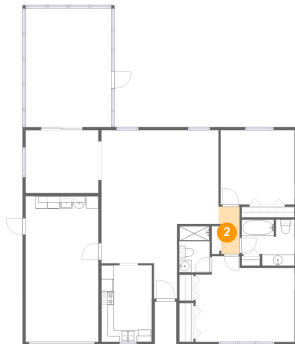
1 Floor 1 - Garage



Dimensions: 11'10" x 23'8"
Area: 280 sq. ft
Counted as Living Area: No

Heated: No
Finished: No
Enclosed: Yes
Contiguous: Yes
Permitted: Yes
Wet Space: No
Addition: No
Conversion: No

2 Floor 1 - Hall

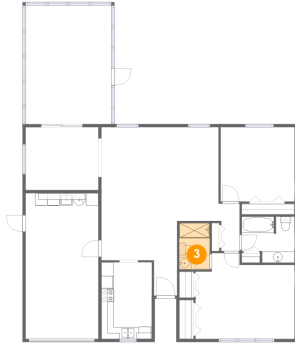


Dimensions: 3'5" x 7'8"
Area: 24 sq. ft
Counted as Living Area:
Yes

Heated: Yes
Finished: Yes
Enclosed: Yes
Contiguous:
Yes
Permitted: Yes
Wet Space: No
Addition: No
Conversion: No

1642 East Dorchester Court, Highland Lakes, Palm Harbor, Pinellas County, Florida, United

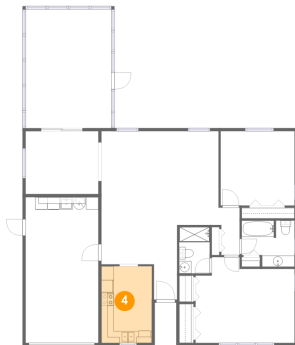
3 Floor 1 - Bath



Dimensions: 5'0" x 7'6"
Area: 37 sq. ft
Counted as Living Area:
Yes

Heated: Yes
Finished: Yes
Enclosed: Yes
Contiguous:
Yes
Permitted: Yes
Wet Space: Yes
Addition: No
Conversion: No

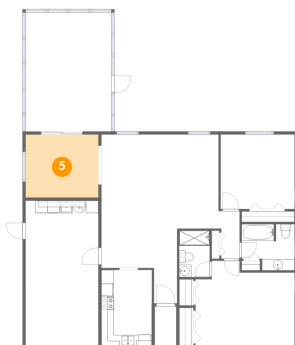
4 Floor 1 - Eat-in Kitchen



Dimensions: 8'2" x 12'5"
Area: 102 sq. ft
Counted as Living Area:
Yes

Heated: Yes
Finished: Yes
Enclosed: Yes
Contiguous:
Yes
Permitted: Yes
Wet Space: No
Addition: No
Conversion: No

5 Floor 1 - Study Room

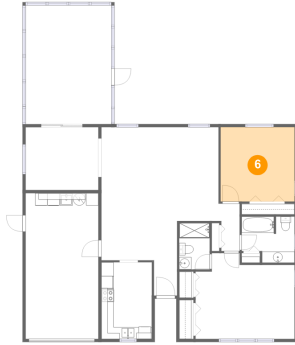


Dimensions: 11'10" x 10'2"
Area: 121 sq. ft
Counted as Living Area:
Yes

Heated: Yes
Finished: Yes
Enclosed: Yes
Contiguous:
Yes
Permitted: Yes
Wet Space: No
Addition: No
Conversion: No

1642 East Dorchester Court, Highland Lakes, Palm Harbor, Pinellas County, Florida, United

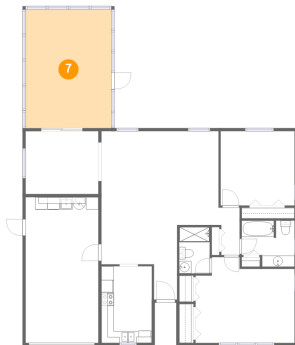
6 Floor 1 - Bedroom



Dimensions: 12'0" x 12'1"
Area: 145 sq. ft
Counted as Living Area:
Yes

Heated: Yes
Finished: Yes
Enclosed: Yes
Contiguous:
Yes
Permitted: Yes
Wet Space: No
Addition: No
Conversion: No

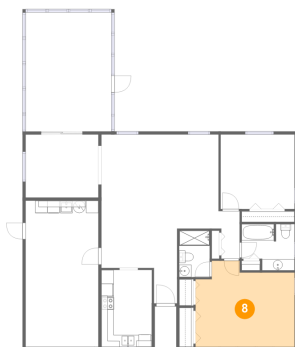
7 Floor 1 - Screened Porch



Dimensions: 13'11" x 19'3"
Area: 269 sq. ft
Counted as Living Area: No

Heated: No
Finished: Yes
Enclosed: No
Contiguous: Yes
Permitted: Yes
Wet Space: No
Addition: No
Conversion: No

8 Floor 1 - Primary Bedroom

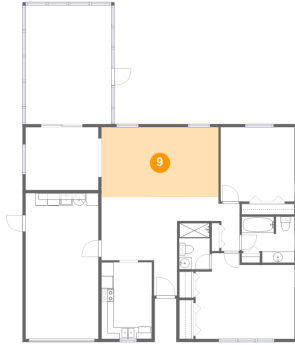


Dimensions: 16'1" x 13'11"
Area: 200 sq. ft
Counted as Living Area:
Yes

Heated: Yes
Finished: Yes
Enclosed: Yes
Contiguous:
Yes
Permitted: Yes
Wet Space: No
Addition: No
Conversion: No

1642 East Dorchester Court, Highland Lakes, Palm Harbor, Pinellas County, Florida, United

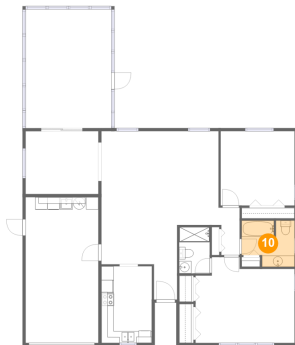
9 Floor 1 - Living Room



Dimensions: 19'0" x 11'4"
Area: 216 sq. ft
Counted as Living Area:
Yes

Heated: Yes
Finished: Yes
Enclosed: Yes
Contiguous:
Yes
Permitted: Yes
Wet Space: No
Addition: No
Conversion: No

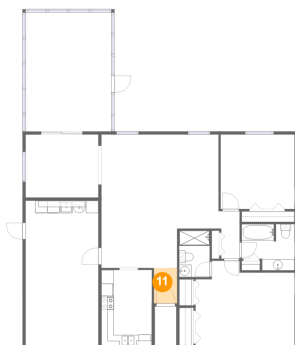
10 Floor 1 - Bath



Dimensions: 8'7" x 7'6"
Area: 57 sq. ft
Counted as Living Area:
Yes

Heated: Yes
Finished: Yes
Enclosed: Yes
Contiguous:
Yes
Permitted: Yes
Wet Space: Yes
Addition: No
Conversion: No

11 Floor 1 - Foyer

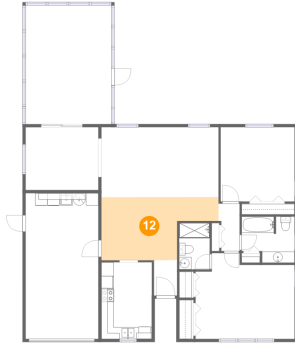


Dimensions: 3'9" x 5'9"
Area: 22 sq. ft
Counted as Living Area:
Yes

Heated: Yes
Finished: Yes
Enclosed: Yes
Contiguous:
Yes
Permitted: Yes
Wet Space: No
Addition: No
Conversion: No

1642 East Dorchester Court, Highland Lakes, Palm Harbor, Pinellas County, Florida, United

12 Floor 1 - Dining Area



Dimensions: 19'1" x 10'3"
Area: 152 sq. ft
Counted as Living Area:
Yes

Heated: Yes
Finished: Yes
Enclosed: Yes
Contiguous:
Yes
Permitted: Yes
Wet Space: No
Addition: No
Conversion: No