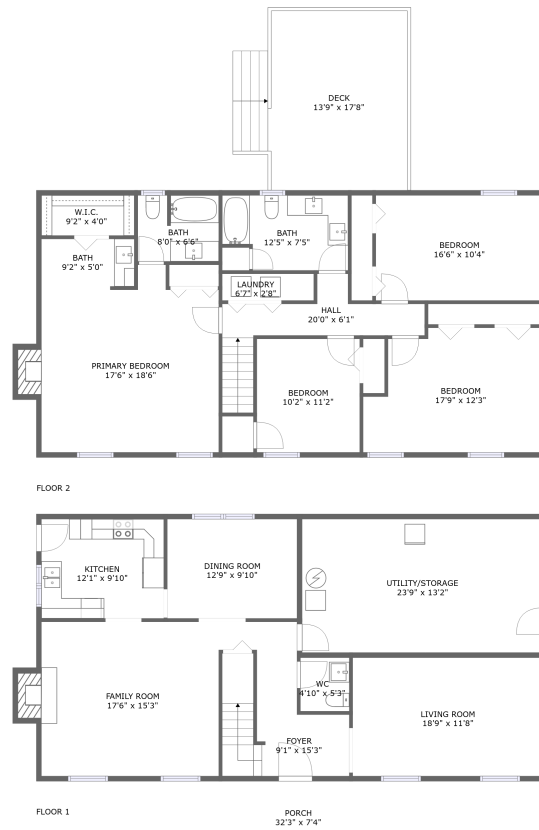



2705 Bobolink Lane, Penn Forest, Cave Spring, Roanoke, Roanoke County, Virginia, United



Property summary


 **1** Garages

 **4** Bedrooms

 **2** Bathrooms

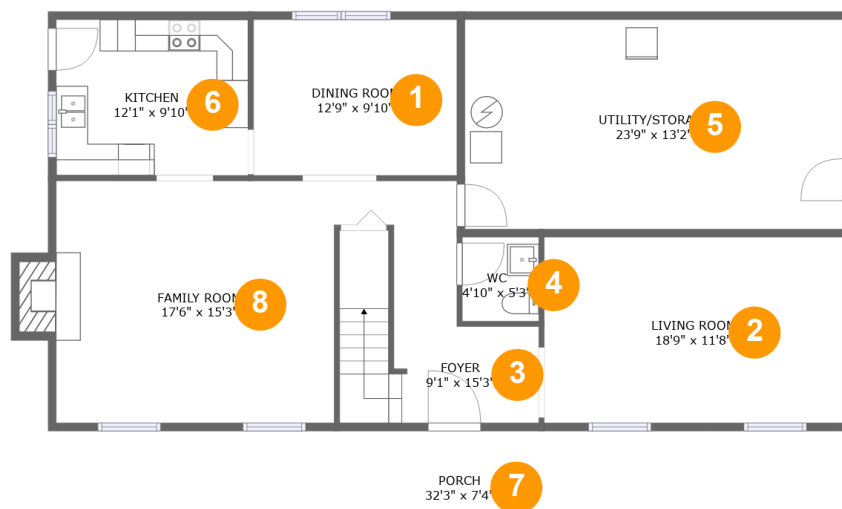
 **1** Half baths

 **2** Floors

 **2,327** Gross living area sqft

 **3,161** Total sqft

2705 Bobolink Lane, Penn Forest, Cave Spring, Roanoke, Roanoke County, Virginia, United



Room dimensions

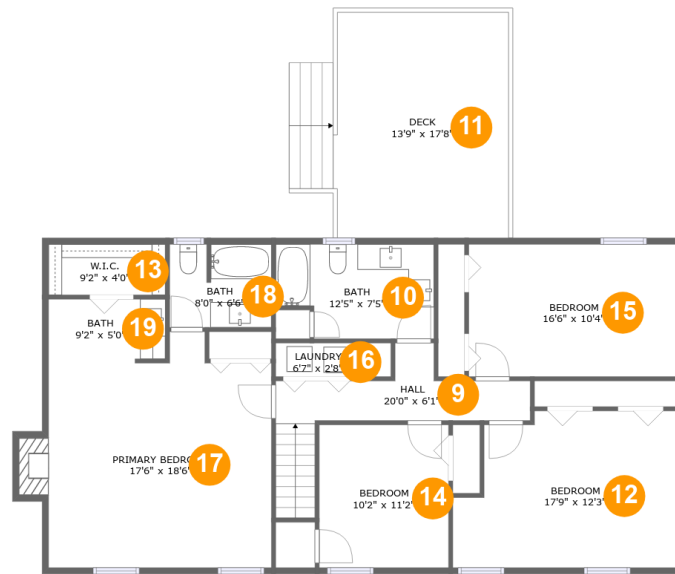
Floor 1

Total sqft: 1580

Living area: 998

#		Dimensions	sqft	Counted as living area
1	Dining Room	12'9" x 9'10"	125 sq. ft	Yes
2	Living Room	18'9" x 11'8"	219 sq. ft	Yes
3	Entry	9'1" x 15'3"	140 sq. ft	Yes
4	Bath	4'10" x 5'3"	25 sq. ft	Yes
5	UTILITY/STORAGE	23'9" x 13'2"	313 sq. ft	No
6	Kitchen	12'1" x 9'10"	118 sq. ft	Yes
7	Outdoor	32'3" x 7'4"	237 sq. ft	No
8	Living Room	17'6" x 15'3"	277 sq. ft	Yes

2705 Bobolink Lane, Penn Forest, Cave Spring, Roanoke, Roanoke County, Virginia, United



Room dimensions

Floor 2

Total sqft: 1581

Living area: 1329

#		Dimensions	sqft	Counted as living area
9	Hall	20'0" x 6'1"	95 sq. ft	Yes
10	Bath	12'5" x 7'5"	84 sq. ft	Yes
11	Outdoor	13'9" x 17'8"	239 sq. ft	No
12	Bedroom	17'9" x 12'3"	197 sq. ft	Yes
13	Cl	9'2" x 4'0"	36 sq. ft	Yes
14	Bedroom	10'2" x 11'2"	114 sq. ft	Yes
15	Bedroom	16'6" x 10'4"	171 sq. ft	Yes
16	Utility	6'7" x 2'8"	24 sq. ft	Yes
17	Bedroom	17'6" x 18'6"	298 sq. ft	Yes
18	Bath	8'0" x 6'6"	51 sq. ft	Yes
19	Bath	9'2" x 5'0"	45 sq. ft	Yes

2705 Bobolink Lane, Penn Forest, Cave Spring, Roanoke, Roanoke County, Virginia, United

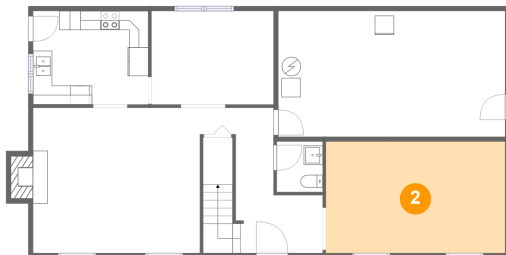
1 Floor 1 - Dining Room



Dimensions: 12'9" x 9'10"
Area: 125 sq. ft
Counted as living area: Yes

Heated: Yes
Finished: Yes
Enclosed: Yes
Contiguous: Yes
Permitted: Yes
Wet space: No
Addition: No
Conversion: No

2 Floor 1 - Living Room



Dimensions: 18'9" x 11'8"
Area: 219 sq. ft
Counted as living area: Yes

Heated: Yes
Finished: Yes
Enclosed: Yes
Contiguous: Yes
Permitted: Yes
Wet space: No
Addition: No
Conversion: No

2705 Bobolink Lane, Penn Forest, Cave Spring, Roanoke, Roanoke County, Virginia, United

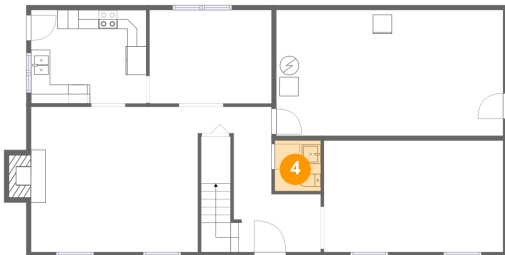
3 Floor 1 - Entry



Dimensions: 9'1" x 15'3"
Area: 140 sq. ft
Counted as living area: Yes

Heated: Yes
Finished: Yes
Enclosed: Yes
Contiguous: Yes
Permitted: Yes
Wet space: No
Addition: No
Conversion: No

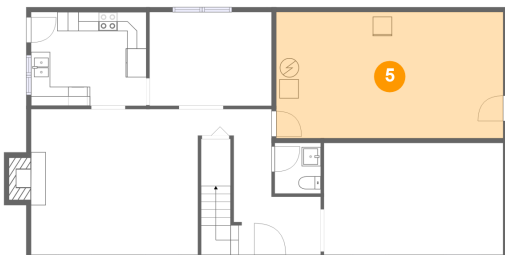
4 Floor 1 - Bath



Dimensions: 4'10" x 5'3"
Area: 25 sq. ft
Counted as living area: Yes

Heated: Yes
Finished: Yes
Enclosed: Yes
Contiguous: Yes
Permitted: Yes
Wet space: Yes
Addition: No
Conversion: No

5 Floor 1 - UTILITY/STORAGE



Dimensions: 23'9" x 13'2"
Area: 313 sq. ft
Counted as living area: No

Heated: No
Finished: No
Enclosed: Yes
Contiguous: Yes
Permitted: Yes
Wet space: No
Addition: No
Conversion: No

2705 Bobolink Lane, Penn Forest, Cave Spring, Roanoke, Roanoke County, Virginia, United

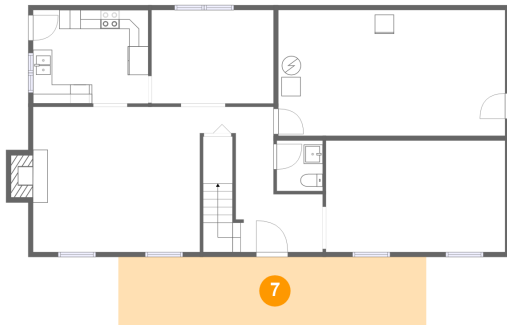
6 Floor 1 - Kitchen



Dimensions: 12'1" x 9'10"
Area: 118 sq. ft
Counted as living area: Yes

Heated: Yes
Finished: Yes
Enclosed: Yes
Contiguous: Yes
Permitted: Yes
Wet space: No
Addition: No
Conversion: No

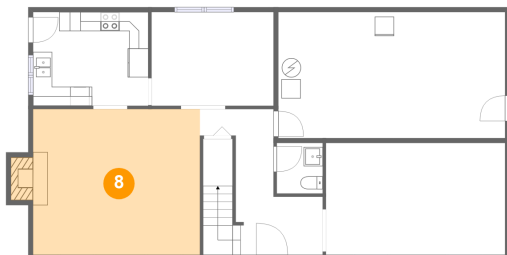
7 Floor 1 - Outdoor



Dimensions: 32'3" x 7'4"
Area: 237 sq. ft
Counted as living area: No

Heated: No
Finished: Yes
Enclosed: No
Contiguous: Yes
Permitted: Yes
Wet space: No
Addition: No
Conversion: No

8 Floor 1 - Living Room

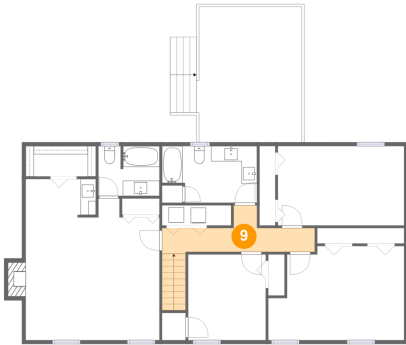


Dimensions: 17'6" x 15'3"
Area: 277 sq. ft
Counted as living area: Yes

Heated: Yes
Finished: Yes
Enclosed: Yes
Contiguous: Yes
Permitted: Yes
Wet space: No
Addition: No
Conversion: No

2705 Bobolink Lane, Penn Forest, Cave Spring, Roanoke, Roanoke County, Virginia, United

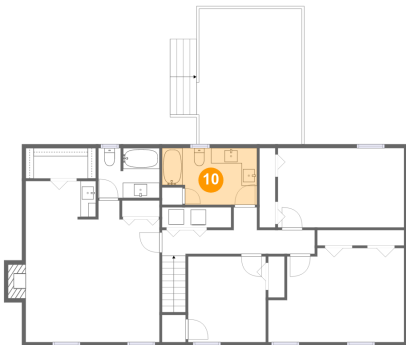
9 Floor 2 - Hall



Dimensions: 20'0" x 6'1"
Area: 95 sq. ft
Counted as living area: Yes

Heated: Yes
Finished: Yes
Enclosed: Yes
Contiguous: Yes
Permitted: Yes
Wet space: No
Addition: No
Conversion: No

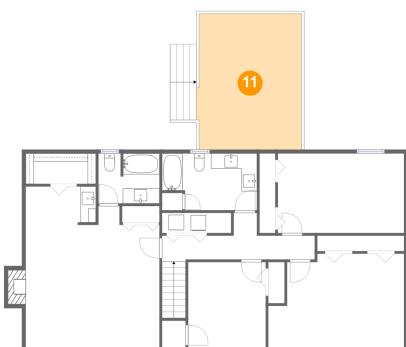
10 Floor 2 - Bath



Dimensions: 12'5" x 7'5"
Area: 84 sq. ft
Counted as living area: Yes

Heated: Yes
Finished: Yes
Enclosed: Yes
Contiguous: Yes
Permitted: Yes
Wet space: Yes
Addition: No
Conversion: No

11 Floor 2 - Outdoor

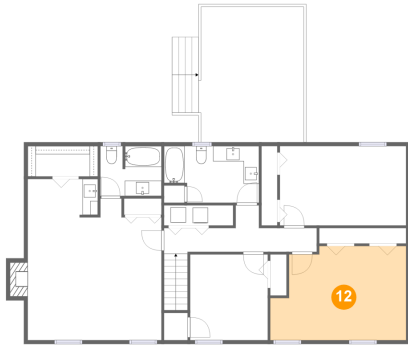


Dimensions: 13'9" x 17'8"
Area: 239 sq. ft
Counted as living area: No

Heated: No
Finished: Yes
Enclosed: No
Contiguous: Yes
Permitted: Yes
Wet space: No
Addition: No
Conversion: No

2705 Bobolink Lane, Penn Forest, Cave Spring, Roanoke, Roanoke County, Virginia, United

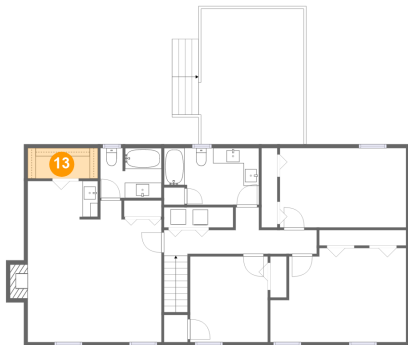
12 Floor 2 - Bedroom



Dimensions: 17'9" x 12'3"
Area: 197 sq. ft
Counted as living area: Yes

Heated: Yes
Finished: Yes
Enclosed: Yes
Contiguous: Yes
Permitted: Yes
Wet space: No
Addition: No
Conversion: No

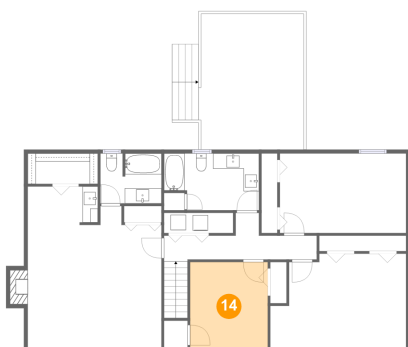
13 Floor 2 - Cl



Dimensions: 9'2" x 4'0"
Area: 36 sq. ft
Counted as living area: Yes

Heated: Yes
Finished: Yes
Enclosed: Yes
Contiguous: Yes
Permitted: Yes
Wet space: No
Addition: No
Conversion: No

14 Floor 2 - Bedroom



Dimensions: 10'2" x 11'2"
Area: 114 sq. ft
Counted as living area: Yes

Heated: Yes
Finished: Yes
Enclosed: Yes
Contiguous: Yes
Permitted: Yes
Wet space: No
Addition: No
Conversion: No

2705 Bobolink Lane, Penn Forest, Cave Spring, Roanoke, Roanoke County, Virginia, United

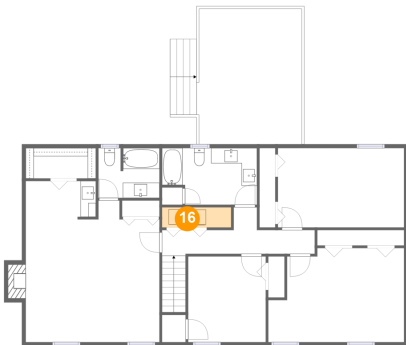
15 Floor 2 - Bedroom



Dimensions: 16'6" x 10'4"
Area: 171 sq. ft
Counted as living area: Yes

Heated: Yes
Finished: Yes
Enclosed: Yes
Contiguous: Yes
Permitted: Yes
Wet space: No
Addition: No
Conversion: No

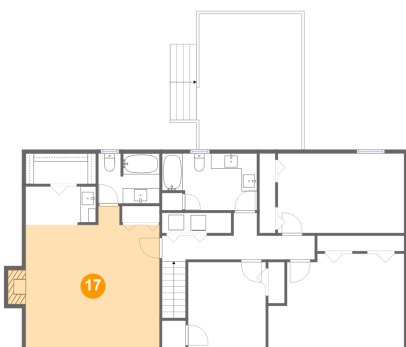
16 Floor 2 - Utility



Dimensions: 6'7" x 2'8"
Area: 24 sq. ft
Counted as living area: Yes

Heated: Yes
Finished: Yes
Enclosed: Yes
Contiguous: Yes
Permitted: Yes
Wet space: No
Addition: No
Conversion: No

17 Floor 2 - Bedroom

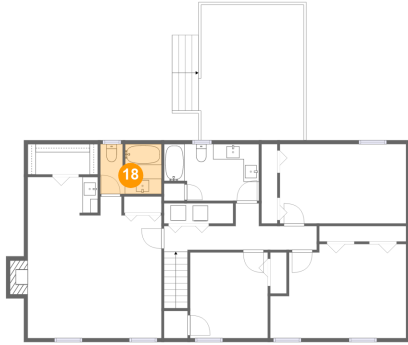


Dimensions: 17'6" x 18'6"
Area: 298 sq. ft
Counted as living area: Yes

Heated: Yes
Finished: Yes
Enclosed: Yes
Contiguous: Yes
Permitted: Yes
Wet space: No
Addition: No
Conversion: No

2705 Bobolink Lane, Penn Forest, Cave Spring, Roanoke, Roanoke County, Virginia, United

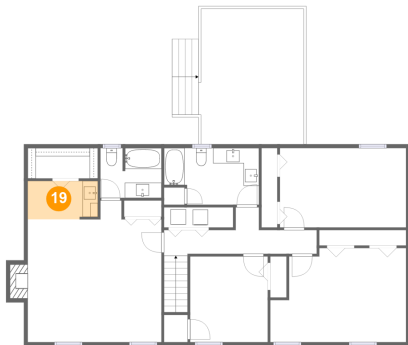
18 Floor 2 - Bath



Dimensions: 8'0" x 6'6"
Area: 51 sq. ft
Counted as living area: Yes

Heated: Yes
Finished: Yes
Enclosed: Yes
Contiguous: Yes
Permitted: Yes
Wet space: Yes
Addition: No
Conversion: No

19 Floor 2 - Bath



Dimensions: 9'2" x 5'0"
Area: 45 sq. ft
Counted as living area: Yes

Heated: Yes
Finished: Yes
Enclosed: Yes
Contiguous: Yes
Permitted: Yes
Wet space: Yes
Addition: No
Conversion: No