

721 Ambler Lane, West Club Forest, Salem, Salem, Virginia, United States, 24153



Property summary

 **1** Garages

 **4** Bedrooms

 **3** Bathrooms

 **1** Half baths

 **3** Floors

 **4,850** Gross living area sqft

 **7,924** Total sqft

721 Ambler Lane, West Club Forest, Salem, Salem, Virginia, United States, 24153



Room dimensions

Floor 1

Total sqft: 3058 Living area: 1102

#		Dimensions	sqft	Counted as living area
1	Basement	33'7" x 36'3"	911 sq. ft	No
2	Recreation Room	49'7" x 21'11"	693 sq. ft	Yes
3	Bath	9'2" x 5'10"	48 sq. ft	Yes
4	Sauna	7'4" x 5'0"	37 sq. ft	Yes
5	Office	14'1" x 14'11"	210 sq. ft	Yes
6	Outdoor	46'11" x 14'9"	558 sq. ft	No
7	Storage	21'9" x 15'8"	262 sq. ft	No
8	Basement	20'1" x 7'3"	145 sq. ft	No

721 Ambler Lane, West Club Forest, Salem, Salem, Virginia, United States, 24153



Room dimensions

Floor 2

Total sqft: 3489 Living area: 2463

#		Dimensions	sqft	Counted as living area
9	Office	12'10" x 14'2"	181 sq. ft	Yes
10	Pantry	5'5" x 4'2"	22 sq. ft	Yes
11	Hall	6'3" x 6'1"	38 sq. ft	Yes
12	Outdoor	33'0" x 14'1"	464 sq. ft	No
13	Living Room	12'4" x 14'2"	174 sq. ft	Yes
14	Living Room	20'3" x 17'1"	346 sq. ft	Yes
15	Bath	10'0" x 9'5"	77 sq. ft	Yes
16	Utility	9'9" x 8'6"	83 sq. ft	Yes
17	Bath	6'2" x 6'0"	37 sq. ft	Yes
18	Bath	5'2" x 2'9"	14 sq. ft	Yes
19	Dining Room	13'1" x 17'1"	224 sq. ft	Yes

Scan captured on Thu, 16 Jan 2025 16:28:29 GMT

Information is calculated by Cubicasa technology deemed highly reliable but not guaranteed.

**721 Ambler Lane, West Club Forest, Salem, Salem,
Virginia, United States, 24153**

#		Dimensions	sqft	Counted as living area
20	Entry	7'9" x 14'2"	110 sq. ft	Yes
21	Kitchen	14'10" x 17'1"	254 sq. ft	Yes
22	Garage	22'9" x 23'9"	529 sq. ft	No
23	Hall	40'3" x 10'4"	321 sq. ft	Yes
24	Bedroom	15'1" x 15'0"	226 sq. ft	Yes
25	Cl	10'0" x 11'7"	103 sq. ft	Yes
26	Hall	4'9" x 11'3"	53 sq. ft	Yes

721 Ambler Lane, West Club Forest, Salem, Salem, Virginia, United States, 24153



Room dimensions

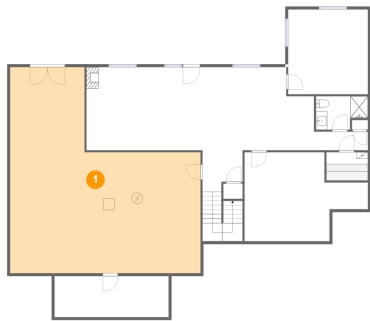
Floor 3

Total sqft: 1377 Living area: 1285

#		Dimensions	sqft	Counted as living area
27	Bedroom	17'2" x 16'11"	291 sq. ft	Yes
28	Bedroom	15'6" x 16'1"	218 sq. ft	Yes
29	Room	6'5" x 11'3"	72 sq. ft	Yes
30	Bedroom	13'11" x 15'8"	189 sq. ft	Yes
31	Open To Below	5'5" x 14'2"	78 sq. ft	No
32	Hall	26'9" x 9'8"	275 sq. ft	Yes
33	Bath	10'6" x 5'10"	61 sq. ft	Yes

721 Ambler Lane, West Club Forest, Salem, Salem, Virginia, United States, 24153

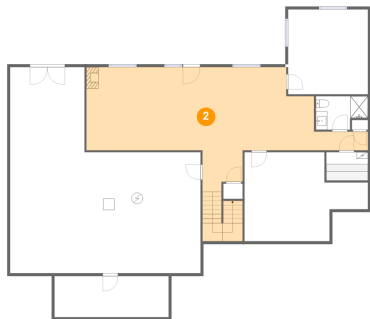
1 Floor 1 - Basement



Dimensions: 33'7" x 36'3"
Area: 911 sq. ft
Counted as living area: No

Heated: No
Finished: No
Enclosed: Yes
Contiguous: Yes
Permitted: Yes
Wet space: No
Addition: No
Conversion: No

2 Floor 1 - Recreation Room

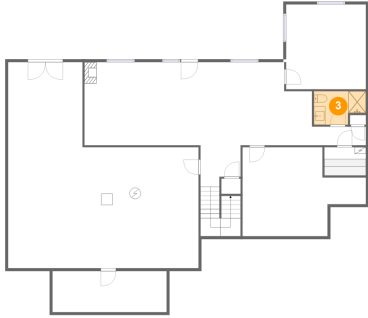


Dimensions: 49'7" x 21'11"
Area: 693 sq. ft
Counted as living area: Yes

Heated: Yes
Finished: Yes
Enclosed: Yes
Contiguous: Yes
Permitted: Yes
Wet space: No
Addition: No
Conversion: No

721 Ambler Lane, West Club Forest, Salem, Salem, Virginia, United States, 24153

3 Floor 1 - Bath



Dimensions: 9'2" x 5'10"
Area: 48 sq. ft
Counted as living area: Yes

Heated: Yes
Finished: Yes
Enclosed: Yes
Contiguous: Yes
Permitted: Yes
Wet space: Yes
Addition: No
Conversion: No

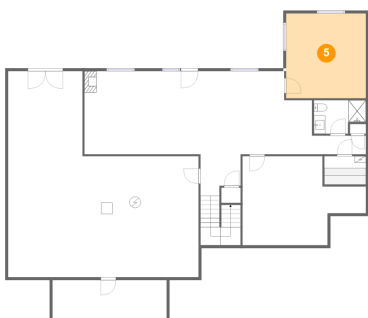
4 Floor 1 - Sauna



Dimensions: 7'4" x 5'0"
Area: 37 sq. ft
Counted as living area: Yes

Heated: Yes
Finished: Yes
Enclosed: Yes
Contiguous: Yes
Permitted: Yes
Wet space: No
Addition: No
Conversion: No

5 Floor 1 - Office

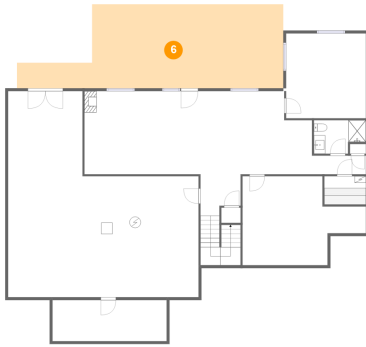


Dimensions: 14'1" x 14'11"
Area: 210 sq. ft
Counted as living area: Yes

Heated: Yes
Finished: Yes
Enclosed: Yes
Contiguous: Yes
Permitted: Yes
Wet space: No
Addition: No
Conversion: No

721 Ambler Lane, West Club Forest, Salem, Salem,
Virginia, United States, 24153

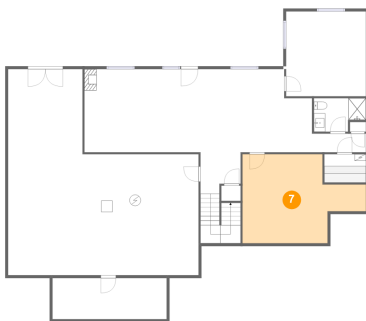
6 Floor 1 - Outdoor



Dimensions: 46'11" x 14'9"
Area: 558 sq. ft
Counted as living area: No

Heated: No
Finished: Yes
Enclosed: No
Contiguous: Yes
Permitted: Yes
Wet space: No
Addition: No
Conversion: No

7 Floor 1 - Storage



Dimensions: 21'9" x 15'8"
Area: 262 sq. ft
Counted as living area: No

Heated: No
Finished: No
Enclosed: No
Contiguous: Yes
Permitted: Yes
Wet space: No
Addition: No
Conversion: No

8 Floor 1 - Basement

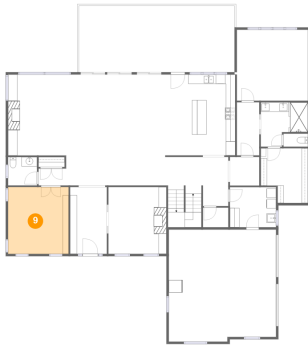


Dimensions: 20'1" x 7'3"
Area: 145 sq. ft
Counted as living area: No

Heated: No
Finished: No
Enclosed: Yes
Contiguous: Yes
Permitted: Yes
Wet space: No
Addition: No
Conversion: No

721 Ambler Lane, West Club Forest, Salem, Salem,
Virginia, United States, 24153

9 Floor 2 - Office



Dimensions: 12'10" x 14'2"
Area: 181 sq. ft
Counted as living area: Yes

Heated: Yes
Finished: Yes
Enclosed: Yes
Contiguous: Yes
Permitted: Yes
Wet space: No
Addition: No
Conversion: No

10 Floor 2 - Pantry



Dimensions: 5'5" x 4'2"
Area: 22 sq. ft
Counted as living area: Yes

Heated: Yes
Finished: Yes
Enclosed: Yes
Contiguous: Yes
Permitted: Yes
Wet space: No
Addition: No
Conversion: No

11 Floor 2 - Hall



Dimensions: 6'3" x 6'1"
Area: 38 sq. ft
Counted as living area: Yes

Heated: Yes
Finished: Yes
Enclosed: Yes
Contiguous: Yes
Permitted: Yes
Wet space: No
Addition: No
Conversion: No

721 Ambler Lane, West Club Forest, Salem, Salem, Virginia, United States, 24153

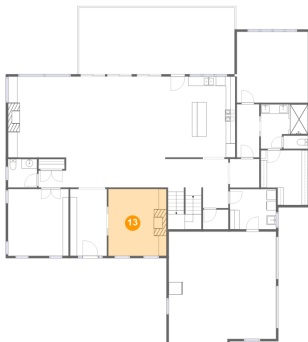
12 Floor 2 - Outdoor



Dimensions: 33'0" x 14'1"
Area: 464 sq. ft
Counted as living area: No

Heated: No
Finished: Yes
Enclosed: No
Contiguous: Yes
Permitted: Yes
Wet space: No
Addition: No
Conversion: No

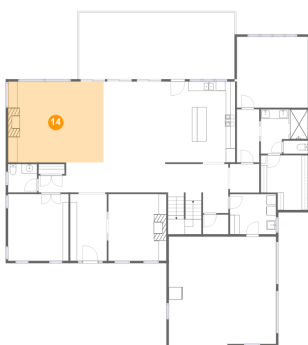
13 Floor 2 - Living Room



Dimensions: 12'4" x 14'2"
Area: 174 sq. ft
Counted as living area: Yes

Heated: Yes
Finished: Yes
Enclosed: Yes
Contiguous: Yes
Permitted: Yes
Wet space: No
Addition: No
Conversion: No

14 Floor 2 - Living Room



Dimensions: 20'3" x 17'1"
Area: 346 sq. ft
Counted as living area: Yes

Heated: Yes
Finished: Yes
Enclosed: Yes
Contiguous: Yes
Permitted: Yes
Wet space: No
Addition: No
Conversion: No

721 Ambler Lane, West Club Forest, Salem, Salem,
Virginia, United States, 24153

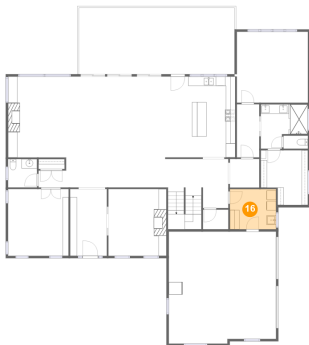
15 Floor 2 - Bath



Dimensions: 10'0" x 9'5"
Area: 77 sq. ft
Counted as living area: Yes

Heated: Yes
Finished: Yes
Enclosed: Yes
Contiguous: Yes
Permitted: Yes
Wet space: Yes
Addition: No
Conversion: No

16 Floor 2 - Utility



Dimensions: 9'9" x 8'6"
Area: 83 sq. ft
Counted as living area: Yes

Heated: Yes
Finished: Yes
Enclosed: Yes
Contiguous: Yes
Permitted: Yes
Wet space: No
Addition: No
Conversion: No

17 Floor 2 - Bath



Dimensions: 6'2" x 6'0"
Area: 37 sq. ft
Counted as living area: Yes

Heated: Yes
Finished: Yes
Enclosed: Yes
Contiguous: Yes
Permitted: Yes
Wet space: Yes
Addition: No
Conversion: No

721 Ambler Lane, West Club Forest, Salem, Salem,
Virginia, United States, 24153

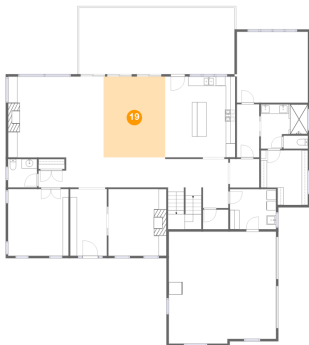
18 Floor 2 - Bath



Dimensions: 5'2" x 2'9"
Area: 14 sq. ft
Counted as living area: Yes

Heated: Yes
Finished: Yes
Enclosed: Yes
Contiguous: Yes
Permitted: Yes
Wet space: Yes
Addition: No
Conversion: No

19 Floor 2 - Dining Room



Dimensions: 13'1" x 17'1"
Area: 224 sq. ft
Counted as living area: Yes

Heated: Yes
Finished: Yes
Enclosed: Yes
Contiguous: Yes
Permitted: Yes
Wet space: No
Addition: No
Conversion: No

20 Floor 2 - Entry



Dimensions: 7'9" x 14'2"
Area: 110 sq. ft
Counted as living area: Yes

Heated: Yes
Finished: Yes
Enclosed: Yes
Contiguous: Yes
Permitted: Yes
Wet space: No
Addition: No
Conversion: No

721 Ambler Lane, West Club Forest, Salem, Salem, Virginia, United States, 24153

21 Floor 2 - Kitchen



Dimensions: 14'10" x 17'1"
Area: 254 sq. ft
Counted as living area: Yes

Heated: Yes
Finished: Yes
Enclosed: Yes
Contiguous: Yes
Permitted: Yes
Wet space: No
Addition: No
Conversion: No

22 Floor 2 - Garage



Dimensions: 22'9" x 23'9"
Area: 529 sq. ft
Counted as living area: No

Heated: No
Finished: No
Enclosed: Yes
Contiguous: Yes
Permitted: Yes
Wet space: No
Addition: No
Conversion: No

23 Floor 2 - Hall

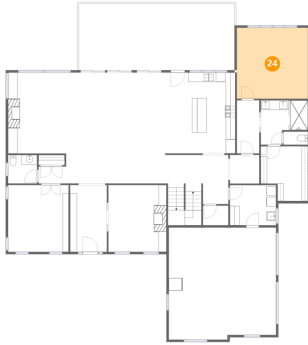


Dimensions: 40'3" x 10'4"
Area: 321 sq. ft
Counted as living area: Yes

Heated: Yes
Finished: Yes
Enclosed: Yes
Contiguous: Yes
Permitted: Yes
Wet space: No
Addition: No
Conversion: No

721 Ambler Lane, West Club Forest, Salem, Salem, Virginia, United States, 24153

24 Floor 2 - Bedroom



Dimensions: 15'1" x 15'0"
Area: 226 sq. ft
Counted as living area: Yes

Heated: Yes
Finished: Yes
Enclosed: Yes
Contiguous: Yes
Permitted: Yes
Wet space: No
Addition: No
Conversion: No

25 Floor 2 - Cl



Dimensions: 10'0" x 11'7"
Area: 103 sq. ft
Counted as living area: Yes

Heated: Yes
Finished: Yes
Enclosed: Yes
Contiguous: Yes
Permitted: Yes
Wet space: No
Addition: No
Conversion: No

26 Floor 2 - Hall

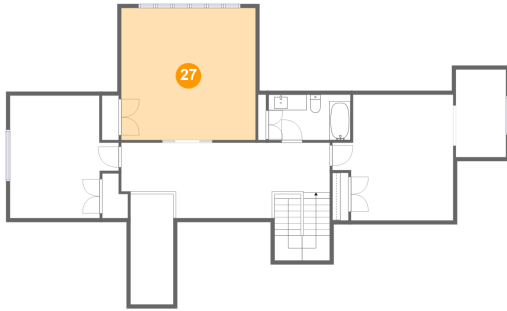


Dimensions: 4'9" x 11'3"
Area: 53 sq. ft
Counted as living area: Yes

Heated: Yes
Finished: Yes
Enclosed: Yes
Contiguous: Yes
Permitted: Yes
Wet space: No
Addition: No
Conversion: No

**721 Ambler Lane, West Club Forest, Salem, Salem,
Virginia, United States, 24153**

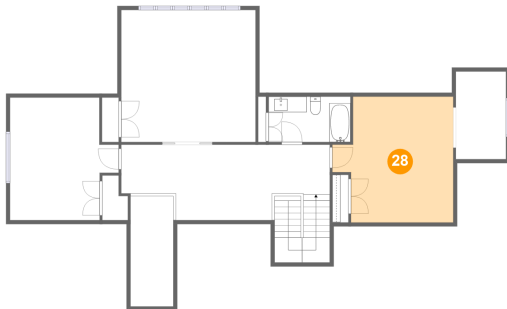
27 Floor 3 - Bedroom



Dimensions: 17'2" x 16'11"
Area: 291 sq. ft
Counted as living area: Yes

Heated: Yes
Finished: Yes
Enclosed: Yes
Contiguous: Yes
Permitted: Yes
Wet space: No
Addition: No
Conversion: No

28 Floor 3 - Bedroom



Dimensions: 15'6" x 16'1"
Area: 218 sq. ft
Counted as living area: Yes

Heated: Yes
Finished: Yes
Enclosed: Yes
Contiguous: Yes
Permitted: Yes
Wet space: No
Addition: No
Conversion: No

29 Floor 3 - Room

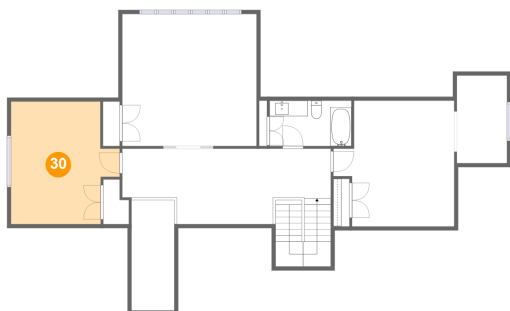


Dimensions: 6'5" x 11'3"
Area: 72 sq. ft
Counted as living area: Yes

Heated: Yes
Finished: Yes
Enclosed: Yes
Contiguous: Yes
Permitted: Yes
Wet space: No
Addition: No
Conversion: No

721 Ambler Lane, West Club Forest, Salem, Salem,
Virginia, United States, 24153

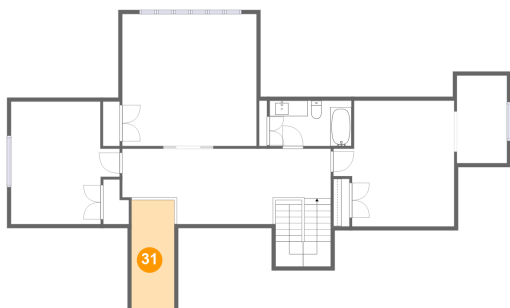
30 Floor 3 - Bedroom



Dimensions: 13'11" x 15'8"
Area: 189 sq. ft
Counted as living area: Yes

Heated: Yes
Finished: Yes
Enclosed: Yes
Contiguous: Yes
Permitted: Yes
Wet space: No
Addition: No
Conversion: No

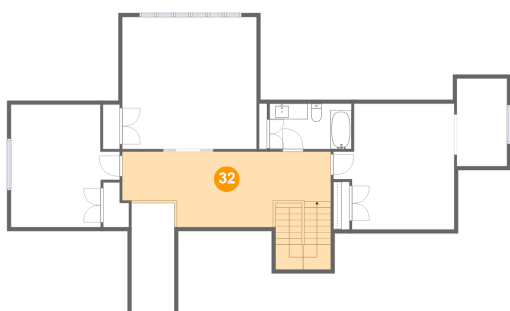
31 Floor 3 - Open To Below



Dimensions: 5'5" x 14'2"
Area: 78 sq. ft
Counted as living area: No

Heated: No
Finished: No
Enclosed: No
Contiguous: Yes
Permitted: No
Wet space: No
Addition: No
Conversion: No

32 Floor 3 - Hall

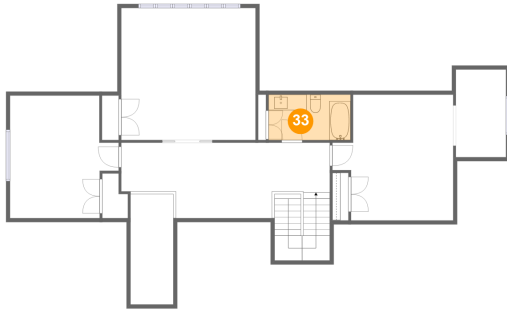


Dimensions: 26'9" x 9'8"
Area: 275 sq. ft
Counted as living area: Yes

Heated: Yes
Finished: Yes
Enclosed: Yes
Contiguous: Yes
Permitted: Yes
Wet space: No
Addition: No
Conversion: No

**721 Ambler Lane, West Club Forest, Salem, Salem,
Virginia, United States, 24153**

33 Floor 3 - Bath



Dimensions: 10'6" x 5'10"
Area: 61 sq. ft
Counted as living area: Yes

Heated: Yes
Finished: Yes
Enclosed: Yes
Contiguous: Yes
Permitted: Yes
Wet space: Yes
Addition: No
Conversion: No