

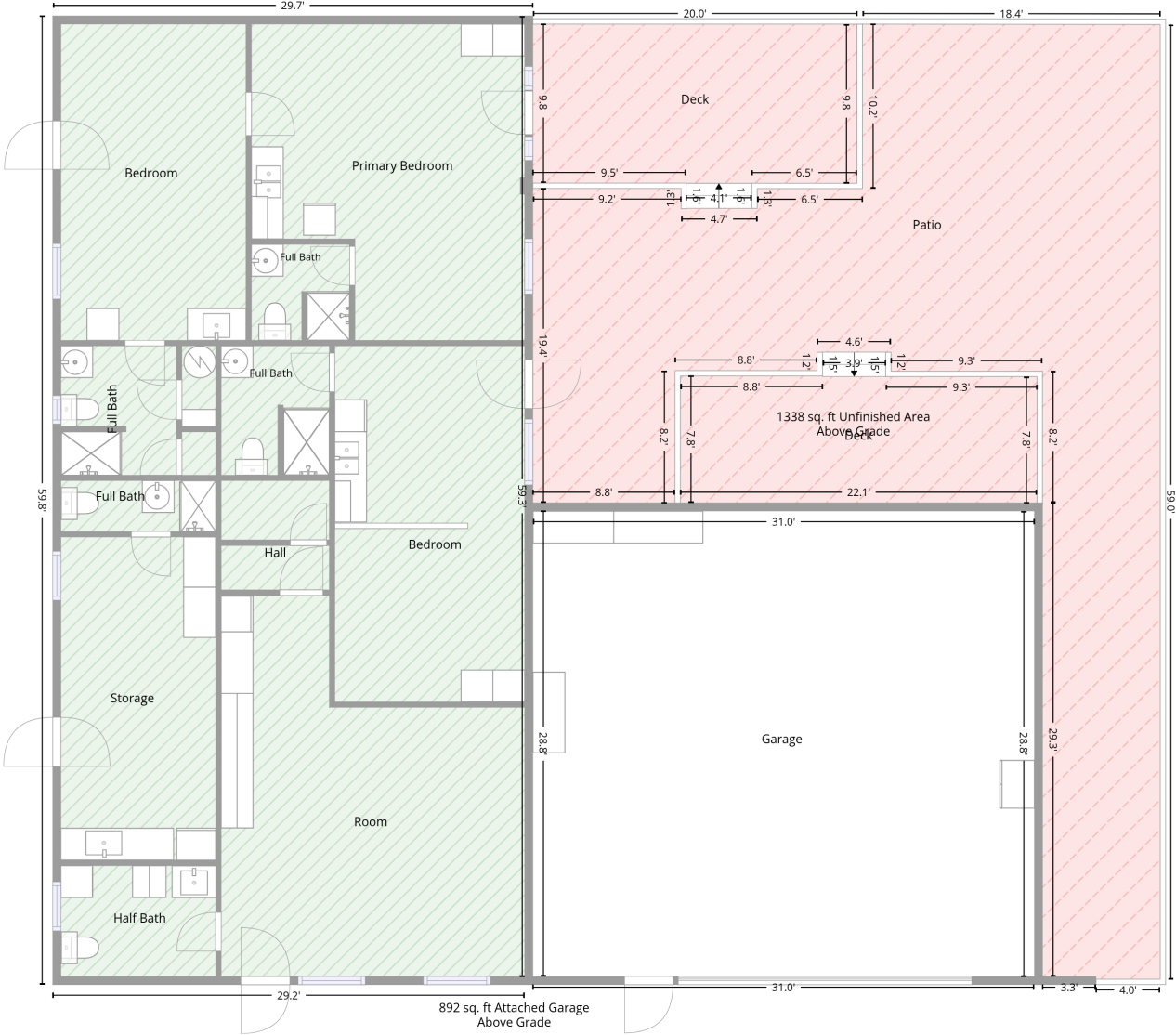
3661 East Antelope Road, Pearce, Cochise County, Arizona, United States, 85625, Bunkhouse

Total area: 1775 sq. ft
 Gross living area: 1775 sq. ft

Finished area: 1775 sq. ft
 Non-standard finished area: 0 sq. ft

Level 1

1775 sq. ft Finished Area Above Grade



Total area: 1775 sq. ft
 Gross living area: 1775 sq. ft

Finished area: 1775 sq. ft
 Non-standard finished area: 0 sq. ft

3661 East Antelope Road, Pearce, Cochise County, Arizona, United States, 85625, Bunkhouse

Total area: 1775 sq. ft
Gross living area: 1775 sq. ft

Finished area: 1775 sq. ft
Non-standard finished area: 0 sq. ft

Level 1

Space	Area (sq. ft)	Calculation <small>Coordinate Polygon Area Algorithm using inches</small>
Finished Area • Living area • Finished Area	1775	$-((399.5 + 399.5) * (202.9 - 915.2) + (399.5 + 393.5) * (915.2 - 915.2) + (393.5 + 393.5) * (915.2 - 921.2) + (393.5 + 43.5) * (921.2 - 921.2) + (43.5 + 43.5) * (921.2 - 202.9) + (43.5 + 399.5) * (202.9 - 202.9)) * 0.5 * 0.00694$
DECK • Non-living area • Unfinished Area	178	$-((661.1 + 661.1) * (452.2 - 470.4) + (661.1 + 773.4) * (470.4 - 470.4) + (773.4 + 773.4) * (470.4 - 564) + (773.4 + 508.9) * (564 - 564) + (508.9 + 508.9) * (564 - 469.9) + (508.9 + 614.3) * (469.9 - 469.9) + (614.3 + 614.3) * (469.9 - 452.2) + (614.3 + 661.1) * (452.2 - 452.2)) * 0.5 * 0.00694$
DECK • Non-living area • Unfinished Area	203	$-((639.9 + 639.9) * (209 - 327) + (639.9 + 561.8) * (327 - 327) + (561.8 + 561.8) * (327 - 345.6) + (561.8 + 513.1) * (345.6 - 345.6) + (513.1 + 513.1) * (345.6 - 326.9) + (513.1 + 399.5) * (326.9 - 326.9) + (399.5 + 399.5) * (326.9 - 209) + (399.5 + 639.9) * (209 - 209)) * 0.5 * 0.00694$
PATIO • Non-living area • Unfinished Area	957	$-((643.9 + 864.7) * (209 - 209.3) + (864.7 + 864.7) * (209.3 - 917.2) + (864.7 + 817.1) * (917.2 - 917.2) + (817.1 + 817.1) * (917.2 - 915.2) + (817.1 + 777.4) * (915.2 - 915.2) + (777.4 + 777.4) * (915.2 - 564) + (777.4 + 777.4) * (564 - 466.4) + (777.4 + 665.1) * (466.4 - 466.4) + (665.1 + 665.1) * (466.4 - 452.2) + (665.1 + 610.3) * (452.2 - 452.2) + (610.3 + 610.3) * (452.2 - 465.9) + (610.3 + 504.9) * (465.9 - 465.9) + (504.9 + 504.9) * (465.9 - 564) + (504.9 + 399.5) * (564 - 564) + (399.5 + 399.5) * (564 - 330.9) + (399.5 + 509.4) * (330.9 - 330.9) + (509.4 + 509.4) * (330.9 - 345.6) + (509.4 + 565.8) * (345.6 - 345.6) + (565.8 + 565.8) * (345.6 - 331) + (565.8 + 643.9) * (331 - 331) + (643.9 + 643.9) * (331 - 209)) * 0.5 * 0.00694$
GARAGE • Attached Garage	892	$-((771.4 + 771.4) * (570 - 915.2) + (771.4 + 399.5) * (915.2 - 915.2) + (399.5 + 399.5) * (915.2 - 570) + (399.5 + 771.4) * (570 - 570)) * 0.5 * 0.00694$

3661 East Antelope Road, Pearce, Cochise County, Arizona, United States, 85625, Bunkhouse

Total area: 1775 sq. ft
Gross living area: 1775 sq. ft

Finished area: 1775 sq. ft
Non-standard finished area: 0 sq. ft

Property UPD

Data	Value
Structure	1
Unit	1
Level Number	1
Below Grade	false
Level Low Ceiling	false
ADU Indicator	false
Total Area	1775
Finished Area	1775
Non-Standard Finished Area	0