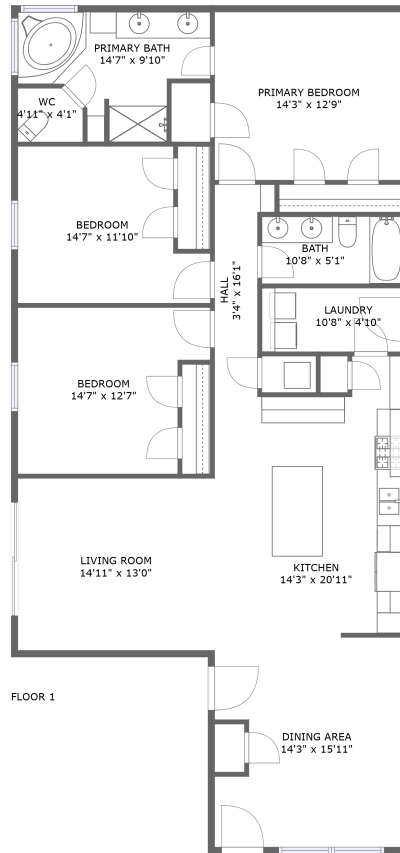


267 Cherokee Pl, Lochbuie, CO, US



Property summary

 **0** Garages

 **3** Bedrooms

 **2** Bathrooms

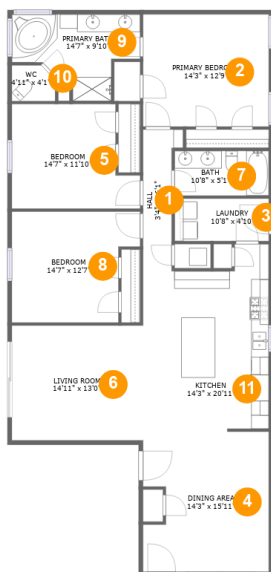
 **0** Half baths

 **1** Floors

 **1,715** Gross living area sqft

 **1,715** Total sqft

267 Cherokee Pl, Lochbuie, CO, US



Room dimensions

Floor 1

Total sqft: 1715 Living area: 1715

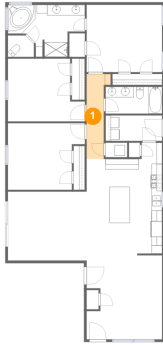
#		Dimensions	sqft	Counted as living area
1	Hall	3'4" x 16'1"	56 sq. ft	Yes
2	Bedroom	14'3" x 12'9"	182 sq. ft	Yes
3	Utility	10'8" x 4'10"	52 sq. ft	Yes
4	Dining Room	14'3" x 15'11"	215 sq. ft	Yes
5	Bedroom	14'7" x 11'10"	150 sq. ft	Yes
6	Living Room	14'11" x 13'0"	194 sq. ft	Yes
7	Bath	10'8" x 5'1"	54 sq. ft	Yes
8	Bedroom	14'7" x 12'7"	162 sq. ft	Yes
9	Bath	14'7" x 9'10"	102 sq. ft	Yes
10	Bath	4'11" x 4'1"	19 sq. ft	Yes
11	Kitchen	14'3" x 20'11"	270 sq. ft	Yes

Scan captured on Sat, 02 Nov 2024 16:16:15 GMT

Information is calculated by Cubicasa technology deemed highly reliable but not guaranteed.

267 Cherokee Pl, Lochbuie, CO, US

1 Floor 1 - Hall



Dimensions: 3'4" x 16'1"
Area: 56 sq. ft
Counted as living area: Yes

Heated: Yes
Finished: Yes
Enclosed: Yes
Contiguous: Yes
Permitted: Yes
Wet space: No
Addition: No
Conversion: No

2 Floor 1 - Bedroom

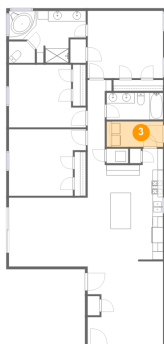


Dimensions: 14'3" x 12'9"
Area: 182 sq. ft
Counted as living area: Yes

Heated: Yes
Finished: Yes
Enclosed: Yes
Contiguous: Yes
Permitted: Yes
Wet space: No
Addition: No
Conversion: No

267 Cherokee Pl, Lochbuie, CO, US

3 Floor 1 - Utility



Dimensions: 10'8" x 4'10"
Area: 52 sq. ft
Counted as living area: Yes

Heated: Yes
Finished: Yes
Enclosed: Yes
Contiguous: Yes
Permitted: Yes
Wet space: No
Addition: No
Conversion: No

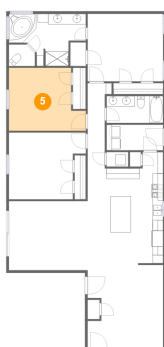
4 Floor 1 - Dining Room



Dimensions: 14'3" x 15'11"
Area: 215 sq. ft
Counted as living area: Yes

Heated: Yes
Finished: Yes
Enclosed: Yes
Contiguous: Yes
Permitted: Yes
Wet space: No
Addition: No
Conversion: No

5 Floor 1 - Bedroom

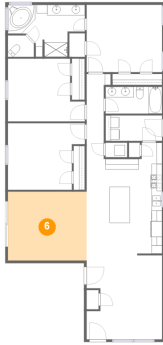


Dimensions: 14'7" x 11'10"
Area: 150 sq. ft
Counted as living area: Yes

Heated: Yes
Finished: Yes
Enclosed: Yes
Contiguous: Yes
Permitted: Yes
Wet space: No
Addition: No
Conversion: No

267 Cherokee Pl, Lochbuie, CO, US

6 Floor 1 - Living Room



Dimensions: 14'11" x 13'0"
Area: 194 sq. ft
Counted as living area: Yes

Heated: Yes
Finished: Yes
Enclosed: Yes
Contiguous: Yes
Permitted: Yes
Wet space: No
Addition: No
Conversion: No

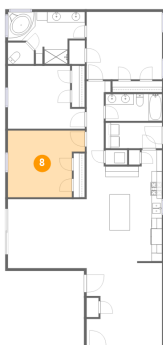
7 Floor 1 - Bath



Dimensions: 10'8" x 5'1"
Area: 54 sq. ft
Counted as living area: Yes

Heated: Yes
Finished: Yes
Enclosed: Yes
Contiguous: Yes
Permitted: Yes
Wet space: Yes
Addition: No
Conversion: No

8 Floor 1 - Bedroom



Dimensions: 14'7" x 12'7"
Area: 162 sq. ft
Counted as living area: Yes

Heated: Yes
Finished: Yes
Enclosed: Yes
Contiguous: Yes
Permitted: Yes
Wet space: No
Addition: No
Conversion: No

267 Cherokee Pl, Lochbuie, CO, US

9 Floor 1 - Bath



Dimensions: 14'7" x 9'10"
Area: 102 sq. ft
Counted as living area: Yes

Heated: Yes
Finished: Yes
Enclosed: Yes
Contiguous: Yes
Permitted: Yes
Wet space: Yes
Addition: No
Conversion: No

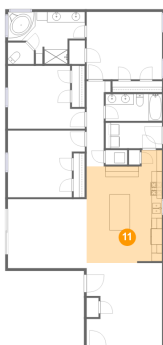
10 Floor 1 - Bath



Dimensions: 4'11" x 4'1"
Area: 19 sq. ft
Counted as living area: Yes

Heated: Yes
Finished: Yes
Enclosed: Yes
Contiguous: Yes
Permitted: Yes
Wet space: Yes
Addition: No
Conversion: No

11 Floor 1 - Kitchen



Dimensions: 14'3" x 20'11"
Area: 270 sq. ft
Counted as living area: Yes

Heated: Yes
Finished: Yes
Enclosed: Yes
Contiguous: Yes
Permitted: Yes
Wet space: No
Addition: No
Conversion: No