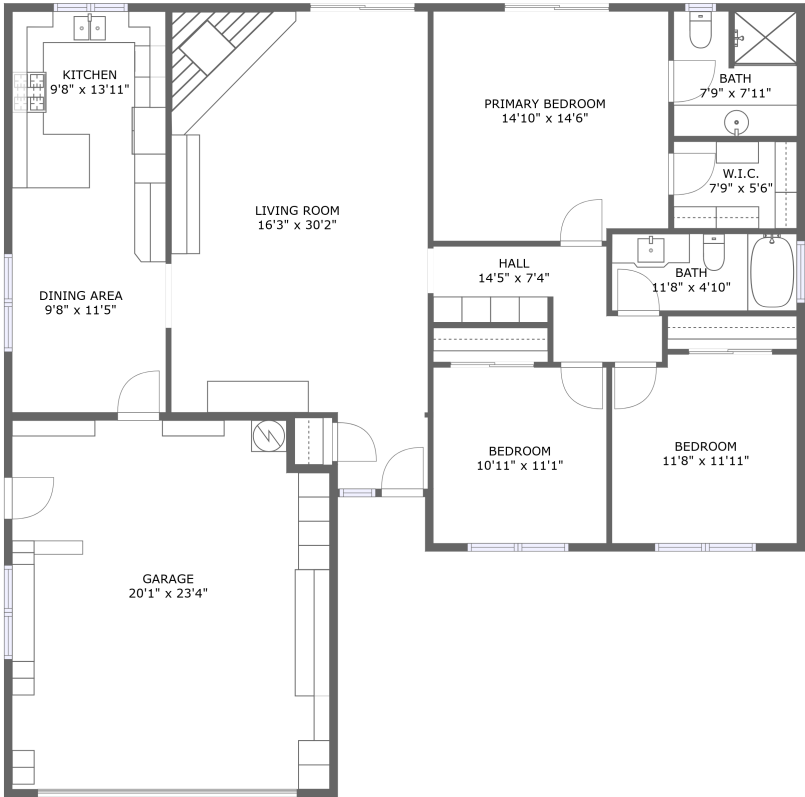


Home report

836 Bolen Drive, Paso Robles, San Luis Obispo County,
California, United States, 93446



FLOOR 1

Total GLA: 1523 sq. ft

Floor 1: 1523 sq. ft

Excluded: Undefined 44 sq. ft, Garage 490 sq. ft

Property summary



1 Floors



3 Bedrooms



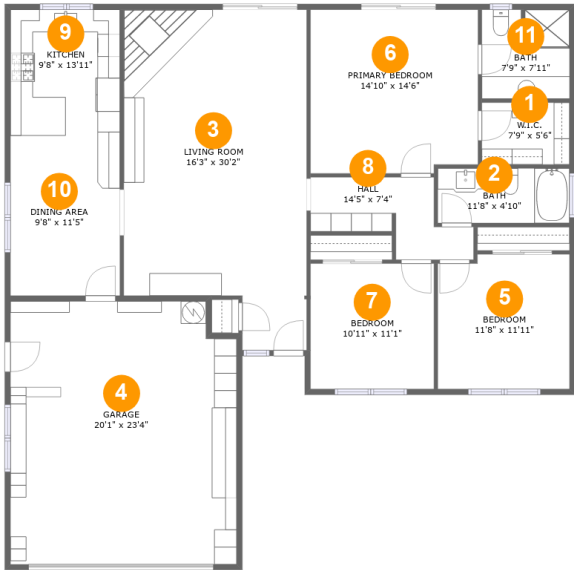
2 Bathrooms



1 Garages

Home report

836 Bolen Drive, Paso Robles, San Luis Obispo County,
California, United States, 93446



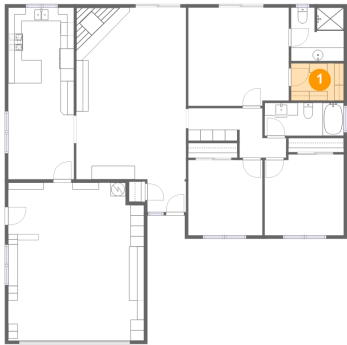
Room dimensions

Floor 1 Total:1523sqft Excluded: 534sqft

#		Max Dimensions	sqft	Included
1	W.I.C.	7'9" x 5'6"	43 sq. ft	Yes
2	Bath	11'8" x 4'10"	57 sq. ft	Yes
3	Living Room	16'3" x 30'2"	438 sq. ft	Yes
4	Garage	20'1" x 23'4"	458 sq. ft	No
5	Bedroom	11'8" x 11'11"	137 sq. ft	Yes
6	Primary Bedroom	14'10" x 14'6"	212 sq. ft	Yes
7	Bedroom	10'11" x 11'1"	122 sq. ft	Yes
8	Hall	14'5" x 7'4"	71 sq. ft	Yes
9	Kitchen	9'8" x 13'11"	135 sq. ft	Yes
10	Dining Area	9'8" x 11'5"	111 sq. ft	Yes
11	Bath	7'9" x 7'11"	60 sq. ft	Yes

836 Bolen Drive, Paso Robles, San Luis Obispo County,
California, United States, 93446

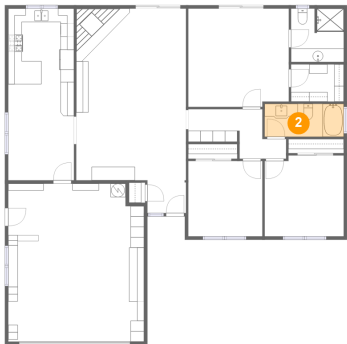
1 Floor 1 - W.I.C.



Max Dimensions: 7'9" x 5'6"
Calculated Area: 43 sq. ft
Included: Yes

Heated: Yes
Finished: Yes
Enclosed: Yes
Contiguous: Yes
Permitted: Yes
Wet space: No
Addition: No
Conversion: No

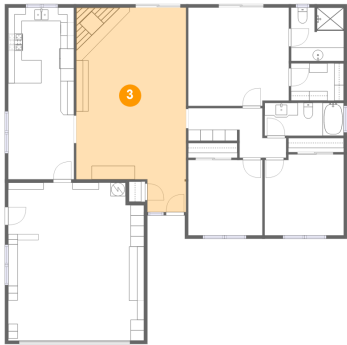
2 Floor 1 - Bath



Max Dimensions: 11'8" x 4'10"
Calculated Area: 57 sq. ft
Included: Yes

Heated: Yes
Finished: Yes
Enclosed: Yes
Contiguous: Yes
Permitted: Yes
Wet space: Yes
Addition: No
Conversion: No

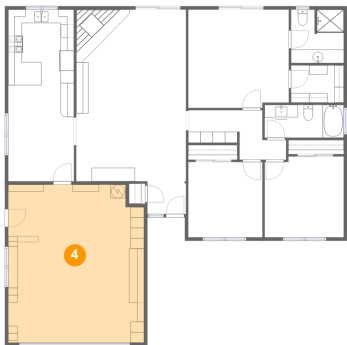
3 Floor 1 - Living Room



Max Dimensions: 16'3" x 30'2"
Calculated Area: 438 sq. ft
Included: Yes

Heated: Yes
Finished: Yes
Enclosed: Yes
Contiguous: Yes
Permitted: Yes
Wet space: No
Addition: No
Conversion: No

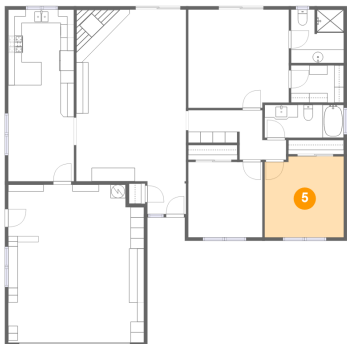
4 Floor 1 - Garage



Max Dimensions: 20'1" x 23'4"
Calculated Area: 458 sq. ft
Included: No

Heated: No
Finished: No
Enclosed: Yes
Contiguous: Yes
Permitted: Yes
Wet space: No
Addition: No
Conversion: No

5 Floor 1 - Bedroom

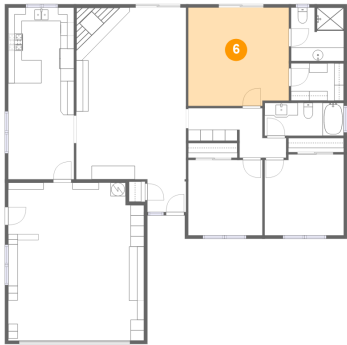


Max Dimensions: 11'8" x 11'11"
Calculated Area: 137 sq. ft
Included: Yes

Heated: Yes
Finished: Yes
Enclosed: Yes
Contiguous: Yes
Permitted: Yes
Wet space: No
Addition: No
Conversion: No

836 Bolen Drive, Paso Robles, San Luis Obispo County,
California, United States, 93446

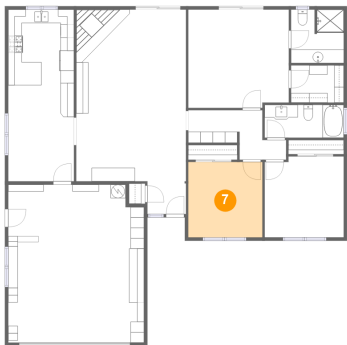
6 Floor 1 - Primary Bedroom



Max Dimensions: 14'10" x 14'6"
Calculated Area: 212 sq. ft
Included: Yes

Heated: Yes
Finished: Yes
Enclosed: Yes
Contiguous: Yes
Permitted: Yes
Wet space: No
Addition: No
Conversion: No

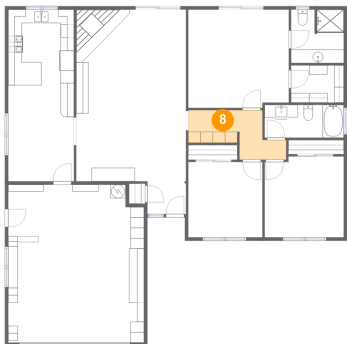
7 Floor 1 - Bedroom



Max Dimensions: 10'11" x 11'1"
Calculated Area: 122 sq. ft
Included: Yes

Heated: Yes
Finished: Yes
Enclosed: Yes
Contiguous: Yes
Permitted: Yes
Wet space: No
Addition: No
Conversion: No

8 Floor 1 - Hall

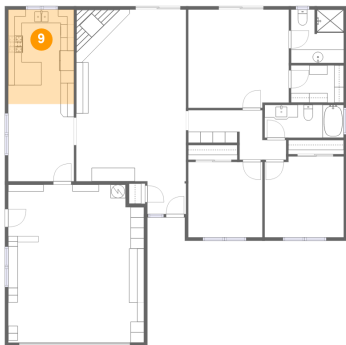


Max Dimensions: 14'5" x 7'4"
Calculated Area: 71 sq. ft
Included: Yes

Heated: Yes
Finished: Yes
Enclosed: Yes
Contiguous: Yes
Permitted: Yes
Wet space: No
Addition: No
Conversion: No

836 Bolen Drive, Paso Robles, San Luis Obispo County,
California, United States, 93446

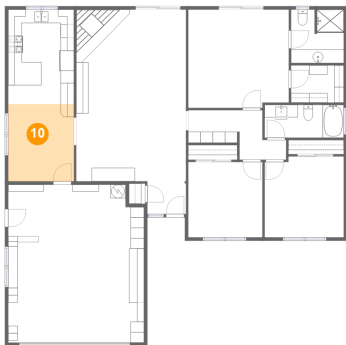
9 Floor 1 - Kitchen



Max Dimensions: 9'8" x 13'11"
Calculated Area: 135 sq. ft
Included: Yes

Heated: Yes
Finished: Yes
Enclosed: Yes
Contiguous: Yes
Permitted: Yes
Wet space: No
Addition: No
Conversion: No

10 Floor 1 - Dining Area



Max Dimensions: 9'8" x 11'5"
Calculated Area: 111 sq. ft
Included: Yes

Heated: Yes
Finished: Yes
Enclosed: Yes
Contiguous: Yes
Permitted: Yes
Wet space: No
Addition: No
Conversion: No

11 Floor 1 - Bath



Max Dimensions: 7'9" x 7'11"
Calculated Area: 60 sq. ft
Included: Yes

Heated: Yes
Finished: Yes
Enclosed: Yes
Contiguous: Yes
Permitted: Yes
Wet space: Yes
Addition: No
Conversion: No