

Home report

8276 Blackwood Drive, Highpointe Estates, Windsor, Larimer County, Colorado, United States, 80550



Total Area: 2962 sq. ft

Below Ground: 0 sq. ft, Floor 2: 1751 sq. ft, Floor 3: 1211 sq. ft

Excluded: Room 139 sq. ft, Basement 1460 sq. ft, Garage 845 sq. ft, Deck 317 sq. ft, Porch 93 sq. ft, Patio 195 sq. ft, Open to below 536 sq. ft, Walls: 335 sq. ft

Property summary

 **3** Floors

 **3** Bedrooms

 **2** Bathrooms

Home report

**8276 Blackwood Drive, Highpointe Estates, Windsor, Larimer  
County, Colorado, United States, 80550**



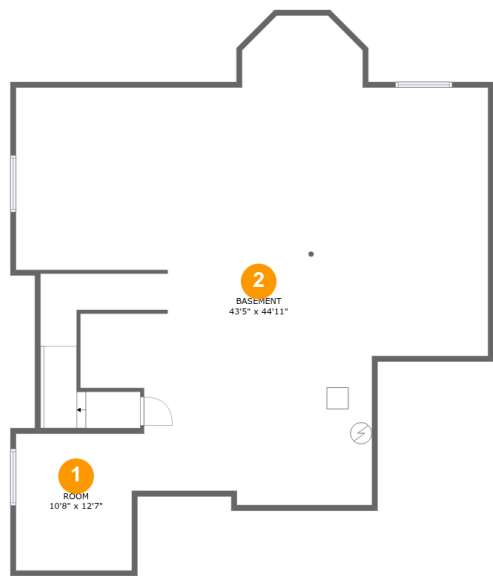
**1**  
Half baths



**1**  
Garages

Home report

8276 Blackwood Drive, Highpointe Estates, Windsor, Larimer County, Colorado, United States, 80550



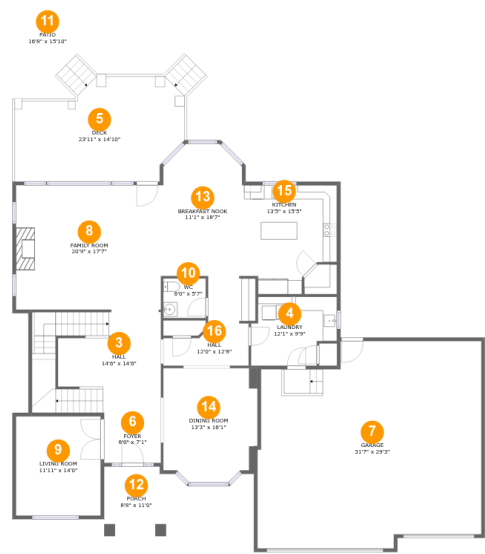
Room dimensions

Floor 1 Below ground Total:0sqft   Excluded: 1599sqft

#		Max Dimensions	sqft	Included
1	Room	10'8" x 12'7"	134 sq. ft	No
2	Basement	43'5" x 44'11"	1447 sq. ft	No

Home report

8276 Blackwood Drive, Highpointe Estates, Windsor, Larimer County, Colorado, United States, 80550



Room dimensions

Floor 2 Total:1751sqft   Excluded: 1450sqft

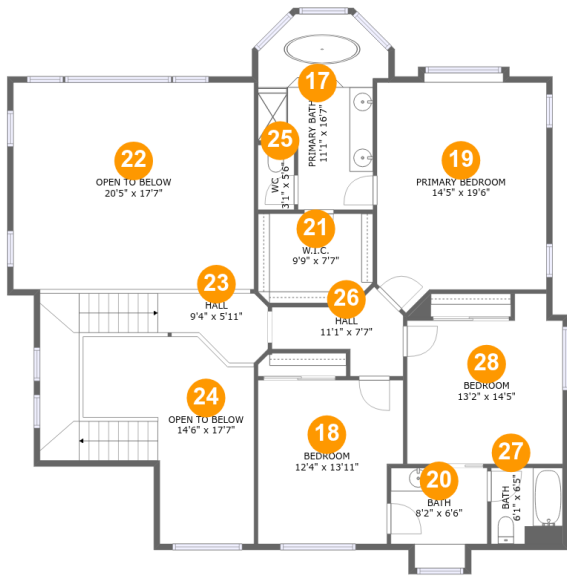
#		Max Dimensions	sqft	Included
3	Hall	14'6" x 14'6"	260 sq. ft	Yes
4	Laundry	12'1" x 9'9"	104 sq. ft	Yes
5	Deck	23'11" x 14'10"	317 sq. ft	No
6	Foyer	8'0" x 7'1"	57 sq. ft	Yes
7	Garage	31'7" x 29'3"	845 sq. ft	No
8	Family Room	20'9" x 17'7"	363 sq. ft	Yes
9	Living Room	11'11" x 14'0"	167 sq. ft	Yes
10	WC	6'0" x 5'7"	33 sq. ft	Yes
11	Patio	16'8" x 15'10"	195 sq. ft	No
12	Porch	8'8" x 11'0"	93 sq. ft	No
13	Breakfast Nook	11'1" x 18'7"	197 sq. ft	Yes

## Home report

**8276 Blackwood Drive, Highpointe Estates, Windsor, Larimer County, Colorado, United States, 80550**

#		Max Dimensions	sqft	Included
14	Dining Room	13'3" x 16'1"	202 sq. ft	Yes
15	Kitchen	13'5" x 15'5"	180 sq. ft	Yes
16	Hall	12'0" x 12'8"	103 sq. ft	Yes

8276 Blackwood Drive, Highpointe Estates, Windsor, Larimer County, Colorado, United States, 80550



## Room dimensions

Floor 3 Total:1211sqft Excluded: 536sqft

#		Max Dimensions	sqft	Included
17	Primary Bath	11'1" x 16'7"	139 sq. ft	Yes
18	Bedroom	12'4" x 13'11"	162 sq. ft	Yes
19	Primary Bedroom	14'5" x 19'6"	262 sq. ft	Yes
20	Bath	8'2" x 6'6"	62 sq. ft	Yes
21	W.I.C.	9'9" x 7'7"	72 sq. ft	Yes
22	Open To Below	20'5" x 17'7"	359 sq. ft	No
23	Hall	9'4" x 5'11"	149 sq. ft	Yes
24	Open To Below	14'6" x 17'7"	177 sq. ft	No
25	WC	3'1" x 5'6"	17 sq. ft	Yes
26	Hall	11'1" x 7'7"	53 sq. ft	Yes
27	Bath	6'1" x 6'5"	39 sq. ft	Yes

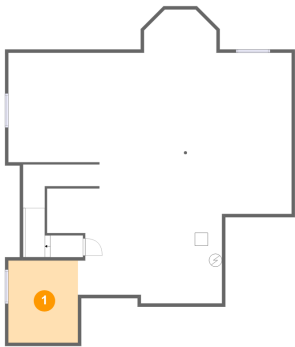
Home report

8276 Blackwood Drive, Highpointe Estates, Windsor, Larimer  
County, Colorado, United States, 80550

#		Max Dimensions	sqft	Included
28	Bedroom	13'2" x 14'5"	167 sq. ft	Yes

8276 Blackwood Drive, Highpointe Estates, Windsor, Larimer  
County, Colorado, United States, 80550

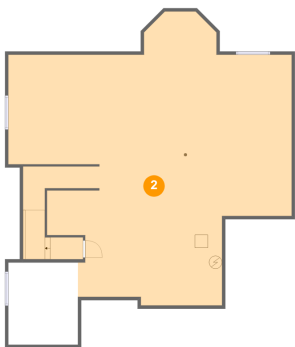
1 Floor 1 - Room



Max Dimensions: 10'8" x 12'7"  
Calculated Area: 134 sq. ft  
Included: No

Heated: Yes  
Finished: No  
Enclosed: Yes  
Contiguous: Yes  
Permitted: Yes  
Wet space: No  
Addition: No  
Conversion: No

2 Floor 1 - Basement



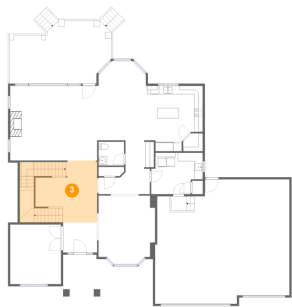
Max Dimensions: 43'5" x 44'11"  
Calculated Area: 1447 sq. ft  
Included: No

Heated: Yes  
Finished: No  
Enclosed: Yes  
Contiguous: Yes  
Permitted: Yes  
Wet space: No  
Addition: No  
Conversion: No



8276 Blackwood Drive, Highpointe Estates, Windsor, Larimer  
County, Colorado, United States, 80550

3 Floor 2 - Hall



Max Dimensions: 14'6" x 14'6"  
Calculated Area: 260 sq. ft  
Included: Yes

Heated: Yes  
Finished: Yes  
Enclosed: Yes  
Contiguous: Yes  
Permitted: Yes  
Wet space: No  
Addition: No  
Conversion: No

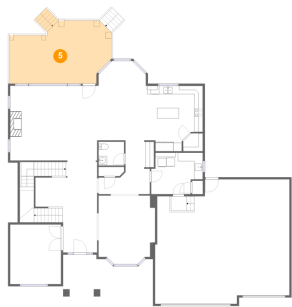
4 Floor 2 - Laundry



Max Dimensions: 12'1" x 9'9"  
Calculated Area: 104 sq. ft  
Included: Yes

Heated: Yes  
Finished: Yes  
Enclosed: Yes  
Contiguous: Yes  
Permitted: Yes  
Wet space: No  
Addition: No  
Conversion: No

5 Floor 2 - Deck



Max Dimensions: 23'11" x 14'10"  
Calculated Area: 317 sq. ft  
Included: No

Heated: No  
Finished: Yes  
Enclosed: No  
Contiguous: Yes  
Permitted: Yes  
Wet space: No  
Addition: No  
Conversion: No

8276 Blackwood Drive, Highpointe Estates, Windsor, Larimer  
County, Colorado, United States, 80550

6 Floor 2 - Foyer



Max Dimensions: 8'0" x 7'1"  
Calculated Area: 57 sq. ft  
Included: Yes

Heated: Yes  
Finished: Yes  
Enclosed: Yes  
Contiguous: Yes  
Permitted: Yes  
Wet space: No  
Addition: No  
Conversion: No

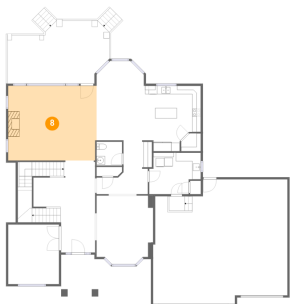
7 Floor 2 - Garage



Max Dimensions: 31'7" x 29'3"  
Calculated Area: 845 sq. ft  
Included: No

Heated: No  
Finished: No  
Enclosed: Yes  
Contiguous: Yes  
Permitted: Yes  
Wet space: No  
Addition: No  
Conversion: No

8 Floor 2 - Family Room

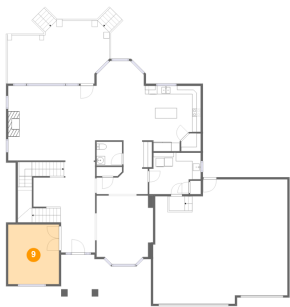


Max Dimensions: 20'9" x 17'7"  
Calculated Area: 363 sq. ft  
Included: Yes

Heated: Yes  
Finished: Yes  
Enclosed: Yes  
Contiguous: Yes  
Permitted: Yes  
Wet space: No  
Addition: No  
Conversion: No

8276 Blackwood Drive, Highpointe Estates, Windsor, Larimer  
County, Colorado, United States, 80550

9 Floor 2 - Living Room



Max Dimensions: 11'11" x 14'0"  
Calculated Area: 167 sq. ft  
Included: Yes

Heated: Yes  
Finished: Yes  
Enclosed: Yes  
Contiguous: Yes  
Permitted: Yes  
Wet space: No  
Addition: No  
Conversion: No

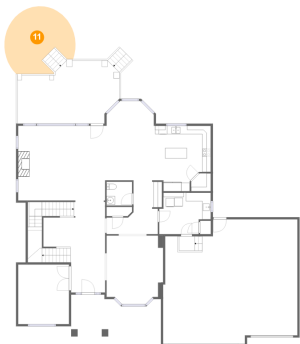
10 Floor 2 - WC



Max Dimensions: 6'0" x 5'7"  
Calculated Area: 33 sq. ft  
Included: Yes

Heated: Yes  
Finished: Yes  
Enclosed: Yes  
Contiguous: Yes  
Permitted: Yes  
Wet space: Yes  
Addition: No  
Conversion: No

11 Floor 2 - Patio

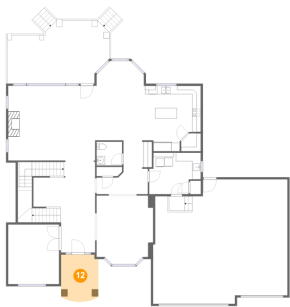


Max Dimensions: 16'8" x 15'10"  
Calculated Area: 195 sq. ft  
Included: No

Heated: No  
Finished: Yes  
Enclosed: No  
Contiguous: Yes  
Permitted: Yes  
Wet space: No  
Addition: No  
Conversion: No

8276 Blackwood Drive, Highpointe Estates, Windsor, Larimer  
County, Colorado, United States, 80550

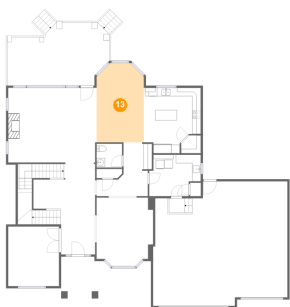
12 Floor 2 - Porch



Max Dimensions: 8'8" x 11'0"  
Calculated Area: 93 sq. ft  
Included: No

Heated: No  
Finished: Yes  
Enclosed: No  
Contiguous: Yes  
Permitted: Yes  
Wet space: No  
Addition: No  
Conversion: No

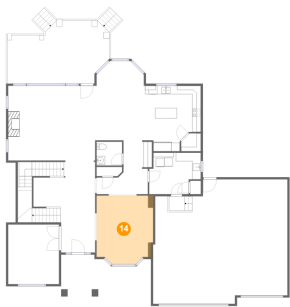
13 Floor 2 - Breakfast Nook



Max Dimensions: 11'1" x 18'7"  
Calculated Area: 197 sq. ft  
Included: Yes

Heated: Yes  
Finished: Yes  
Enclosed: Yes  
Contiguous: Yes  
Permitted: Yes  
Wet space: No  
Addition: No  
Conversion: No

14 Floor 2 - Dining Room

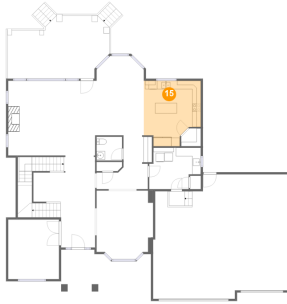


Max Dimensions: 13'3" x 16'1"  
Calculated Area: 202 sq. ft  
Included: Yes

Heated: Yes  
Finished: Yes  
Enclosed: Yes  
Contiguous: Yes  
Permitted: Yes  
Wet space: No  
Addition: No  
Conversion: No

8276 Blackwood Drive, Highpointe Estates, Windsor, Larimer County, Colorado, United States, 80550

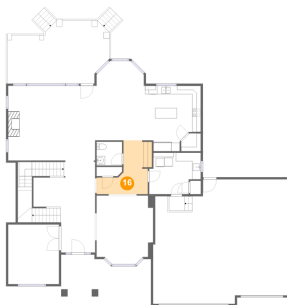
## 15 Floor 2 - Kitchen



Max Dimensions: 13'5" x 15'5"  
Calculated Area: 180 sq. ft  
Included: Yes

Heated: Yes  
Finished: Yes  
Enclosed: Yes  
Contiguous: Yes  
Permitted: Yes  
Wet space: No  
Addition: No  
Conversion: No

## 16 Floor 2 - Hall



Max Dimensions: 12'0" x 12'8"  
Calculated Area: 103 sq. ft  
Included: Yes

Heated: Yes  
Finished: Yes  
Enclosed: Yes  
Contiguous: Yes  
Permitted: Yes  
Wet space: No  
Addition: No  
Conversion: No

## 17 Floor 3 - Primary Bath



Max Dimensions: 11'1" x 16'7"  
Calculated Area: 139 sq. ft  
Included: Yes

Heated: Yes  
Finished: Yes  
Enclosed: Yes  
Contiguous: Yes  
Permitted: Yes  
Wet space: Yes  
Addition: No  
Conversion: No

8276 Blackwood Drive, Highpointe Estates, Windsor, Larimer  
County, Colorado, United States, 80550

18 Floor 3 - Bedroom



Max Dimensions: 12'4" x 13'11"  
Calculated Area: 162 sq. ft  
Included: Yes

Heated: Yes  
Finished: Yes  
Enclosed: Yes  
Contiguous: Yes  
Permitted: Yes  
Wet space: No  
Addition: No  
Conversion: No

19 Floor 3 - Primary Bedroom



Max Dimensions: 14'5" x 19'6"  
Calculated Area: 262 sq. ft  
Included: Yes

Heated: Yes  
Finished: Yes  
Enclosed: Yes  
Contiguous: Yes  
Permitted: Yes  
Wet space: No  
Addition: No  
Conversion: No

20 Floor 3 - Bath



Max Dimensions: 8'2" x 6'6"  
Calculated Area: 62 sq. ft  
Included: Yes

Heated: Yes  
Finished: Yes  
Enclosed: Yes  
Contiguous: Yes  
Permitted: Yes  
Wet space: Yes  
Addition: No  
Conversion: No

8276 Blackwood Drive, Highpointe Estates, Windsor, Larimer  
County, Colorado, United States, 80550

21 Floor 3 - W.I.C.



Max Dimensions: 9'9" x 7'7"  
Calculated Area: 72 sq. ft  
Included: Yes

Heated: Yes  
Finished: Yes  
Enclosed: Yes  
Contiguous: Yes  
Permitted: Yes  
Wet space: No  
Addition: No  
Conversion: No

22 Floor 3 - Open To Below



Max Dimensions: 20'5" x 17'7"  
Calculated Area: 359 sq. ft  
Included: No

Heated: No  
Finished: No  
Enclosed: No  
Contiguous: Yes  
Permitted: No  
Wet space: No  
Addition: No  
Conversion: No

23 Floor 3 - Hall



Max Dimensions: 9'4" x 5'11"  
Calculated Area: 149 sq. ft  
Included: Yes

Heated: Yes  
Finished: Yes  
Enclosed: Yes  
Contiguous: Yes  
Permitted: Yes  
Wet space: No  
Addition: No  
Conversion: No

8276 Blackwood Drive, Highpointe Estates, Windsor, Larimer  
County, Colorado, United States, 80550

### 24 Floor 3 - Open To Below



Max Dimensions: 14'6" x 17'7"  
Calculated Area: 177 sq. ft  
Included: No

Heated: No  
Finished: No  
Enclosed: No  
Contiguous: Yes  
Permitted: No  
Wet space: No  
Addition: No  
Conversion: No

### 25 Floor 3 - WC



Max Dimensions: 3'1" x 5'6"  
Calculated Area: 17 sq. ft  
Included: Yes

Heated: Yes  
Finished: Yes  
Enclosed: Yes  
Contiguous: Yes  
Permitted: Yes  
Wet space: No  
Addition: No  
Conversion: No

### 26 Floor 3 - Hall



Max Dimensions: 11'1" x 7'7"  
Calculated Area: 53 sq. ft  
Included: Yes

Heated: Yes  
Finished: Yes  
Enclosed: Yes  
Contiguous: Yes  
Permitted: Yes  
Wet space: No  
Addition: No  
Conversion: No



8276 Blackwood Drive, Highpointe Estates, Windsor, Larimer  
County, Colorado, United States, 80550

27 Floor 3 - Bath



Max Dimensions: 6'1" x 6'5"  
Calculated Area: 39 sq. ft  
Included: Yes

Heated: Yes  
Finished: Yes  
Enclosed: Yes  
Contiguous: Yes  
Permitted: Yes  
Wet space: Yes  
Addition: No  
Conversion: No

28 Floor 3 - Bedroom



Max Dimensions: 13'2" x 14'5"  
Calculated Area: 167 sq. ft  
Included: Yes

Heated: Yes  
Finished: Yes  
Enclosed: Yes  
Contiguous: Yes  
Permitted: Yes  
Wet space: No  
Addition: No  
Conversion: No