

Home report

6030 Stickley Lane, Highfields, Cave Spring, Roanoke, Roanoke County, Virginia, United States, 24018



Total Area: 4191 sq. ft
Below Ground: 1310 sq. ft, Floor 2: 2000 sq. ft, Floor 3: 881 sq. ft
Excluded: Storage 478 sq. ft, Outdoor Patio Covered 203 sq. ft, Outdoor Porch Screen 209 sq. ft, Outdoor Porch 250 sq. ft, Outdoor Patio 143 sq. ft, Garage 566 sq. ft

Property summary

**3** Floors

**4** Bedrooms

**4** Bathrooms

Home report

6030 Stickley Lane, Highfields, Cave Spring, Roanoke, Roanoke County, Virginia, United States, 24018



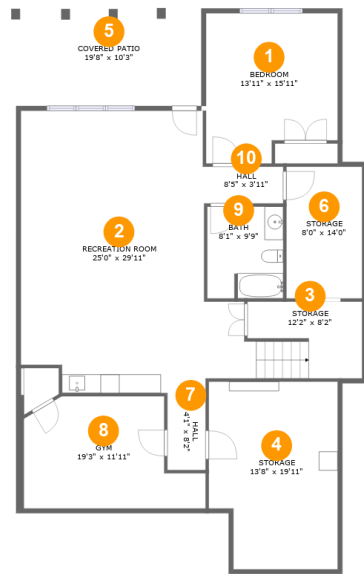
1
Half baths



1
Garages

Home report

6030 Stickley Lane, Highfields, Cave Spring, Roanoke, Roanoke County, Virginia, United States, 24018



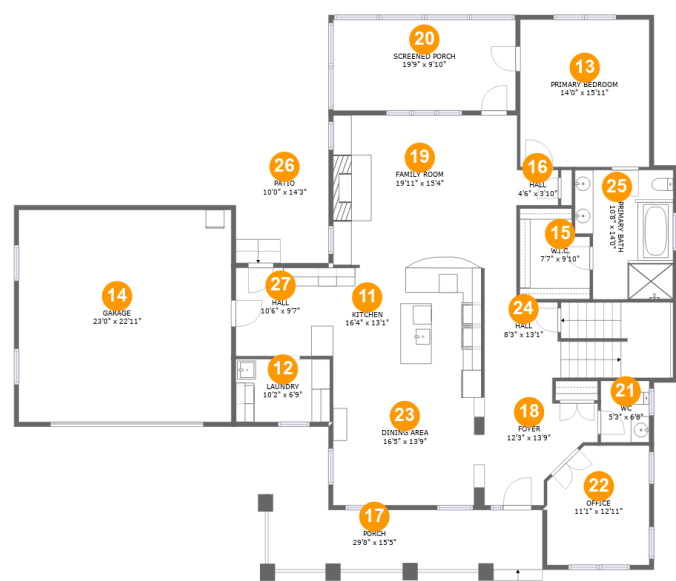
Room dimensions

Floor 1 Below ground Total:1310sqft Excluded: 681sqft

#		Max Dimensions	sqft	Included
1	Bedroom	13'11" x 15'11"	205 sq. ft	Yes
2	Recreation Room	25'0" x 29'11"	631 sq. ft	Yes
3	Storage	12'2" x 8'2"	72 sq. ft	No
4	Storage	13'8" x 19'11"	255 sq. ft	No
5	Covered Patio	19'8" x 10'3"	203 sq. ft	No
6	Storage	8'0" x 14'0"	112 sq. ft	No
7	Hall	4'1" x 8'2"	33 sq. ft	Yes
8	Gym	19'3" x 11'11"	192 sq. ft	Yes
9	Bath	8'1" x 9'9"	78 sq. ft	Yes
10	Hall	8'5" x 3'11"	33 sq. ft	Yes

Home report

6030 Stickley Lane, Highfields, Cave Spring, Roanoke, Roanoke County, Virginia, United States, 24018



Room dimensions

Floor 2 Total:2000sqft Excluded: 1168sqft

#		Max Dimensions	sqft	Included
11	Kitchen	16'4" x 13'1"	209 sq. ft	Yes
12	Laundry	10'2" x 6'9"	69 sq. ft	Yes
13	Primary Bedroom	14'0" x 15'11"	223 sq. ft	Yes
14	Garage	23'0" x 22'11"	528 sq. ft	No
15	W.I.C.	7'7" x 9'10"	69 sq. ft	Yes
16	Hall	4'6" x 3'10"	17 sq. ft	Yes
17	Porch	29'8" x 15'5"	250 sq. ft	No
18	Foyer	12'3" x 13'9"	124 sq. ft	Yes
19	Family Room	19'11" x 15'4"	305 sq. ft	Yes
20	Screened Porch	19'9" x 9'10"	194 sq. ft	No
21	WC	5'3" x 6'8"	35 sq. ft	Yes

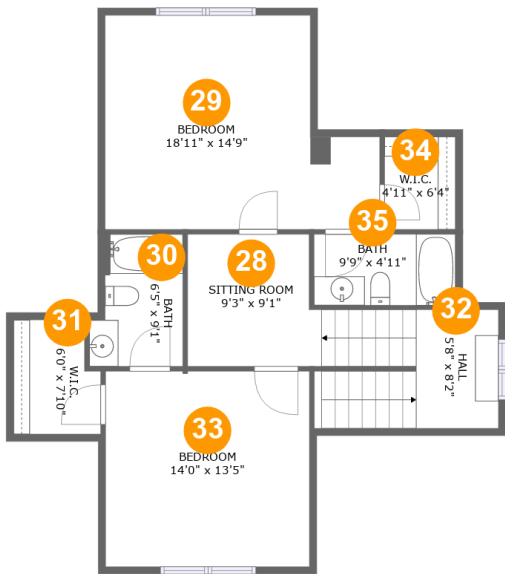
Home report

6030 Stickley Lane, Highfields, Cave Spring, Roanoke, Roanoke County, Virginia, United States, 24018

#		Max Dimensions	sqft	Included
22	Office	11'1" x 12'11"	135 sq. ft	Yes
23	Dining Area	16'5" x 13'9"	226 sq. ft	Yes
24	Hall	8'3" x 13'1"	180 sq. ft	Yes
25	Primary Bath	10'8" x 14'0"	135 sq. ft	Yes
26	Patio	10'0" x 14'3"	143 sq. ft	No
27	Hall	10'6" x 9'7"	100 sq. ft	Yes

Home report

6030 Stickley Lane, Highfields, Cave Spring, Roanoke, Roanoke County, Virginia, United States, 24018



Room dimensions

Floor 3 Total:881sqft Excluded: 0sqft

#		Max Dimensions	sqft	Included
28	Sitting Room	9'3" x 9'1"	105 sq. ft	Yes
29	Bedroom	18'11" x 14'9"	238 sq. ft	Yes
30	Bath	6'5" x 9'1"	52 sq. ft	Yes
31	W.I.C.	6'0" x 7'10"	43 sq. ft	Yes
32	Hall	5'8" x 8'2"	74 sq. ft	Yes
33	Bedroom	14'0" x 13'5"	189 sq. ft	Yes
34	W.I.C.	4'11" x 6'4"	31 sq. ft	Yes
35	Bath	9'9" x 4'11"	48 sq. ft	Yes

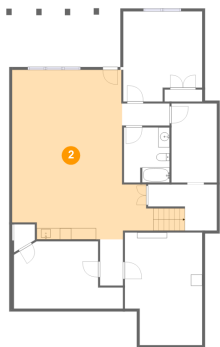
1 Floor 1 - Bedroom



Max Dimensions: 13'11" x 15'11"
Calculated Area: 205 sq. ft
Included: Yes

Heated: Yes
Finished: Yes
Enclosed: Yes
Contiguous: Yes
Permitted: Yes
Wet space: No
Addition: No
Conversion: No

2 Floor 1 - Recreation Room



Max Dimensions: 25'0" x 29'11"
Calculated Area: 631 sq. ft
Included: Yes

Heated: Yes
Finished: Yes
Enclosed: Yes
Contiguous: Yes
Permitted: Yes
Wet space: No
Addition: No
Conversion: No

3 Floor 1 - Storage



Max Dimensions: 12'2" x 8'2"
Calculated Area: 72 sq. ft
Included: No

Heated: No
Finished: No
Enclosed: No
Contiguous: Yes
Permitted: Yes
Wet space: No
Addition: No
Conversion: No

4 Floor 1 - Storage



Max Dimensions: 13'8" x 19'11"
Calculated Area: 255 sq. ft
Included: No

Heated: No
Finished: No
Enclosed: No
Contiguous: Yes
Permitted: Yes
Wet space: No
Addition: No
Conversion: No

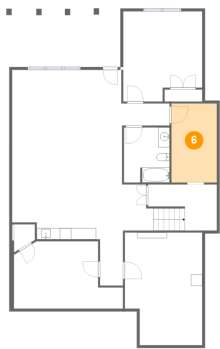
5 Floor 1 - Covered Patio



Max Dimensions: 19'8" x 10'3"
Calculated Area: 203 sq. ft
Included: No

Heated: No
Finished: Yes
Enclosed: No
Contiguous: Yes
Permitted: Yes
Wet space: No
Addition: No
Conversion: No

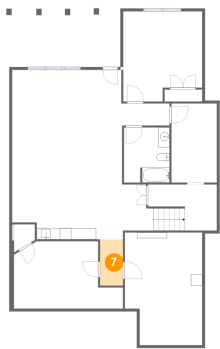
6 Floor 1 - Storage



Max Dimensions: 8'0" x 14'0"
Calculated Area: 112 sq. ft
Included: No

Heated: No
Finished: No
Enclosed: No
Contiguous: Yes
Permitted: Yes
Wet space: No
Addition: No
Conversion: No

7 Floor 1 - Hall



Max Dimensions: 4'1" x 8'2"
Calculated Area: 33 sq. ft
Included: Yes

Heated: Yes
Finished: Yes
Enclosed: Yes
Contiguous: Yes
Permitted: Yes
Wet space: No
Addition: No
Conversion: No

8 Floor 1 - Gym



Max Dimensions: 19'3" x 11'11"
Calculated Area: 192 sq. ft
Included: Yes

Heated: Yes
Finished: Yes
Enclosed: Yes
Contiguous: Yes
Permitted: Yes
Wet space: No
Addition: No
Conversion: No

9 Floor 1 - Bath



Max Dimensions: 8'1" x 9'9"
Calculated Area: 78 sq. ft
Included: Yes

Heated: Yes
Finished: Yes
Enclosed: Yes
Contiguous: Yes
Permitted: Yes
Wet space: Yes
Addition: No
Conversion: No

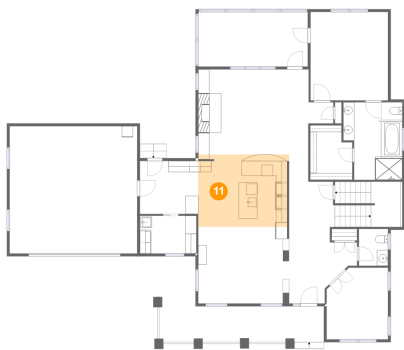
10 Floor 1 - Hall



Max Dimensions: 8'5" x 3'11"
Calculated Area: 33 sq. ft
Included: Yes

Heated: Yes
Finished: Yes
Enclosed: Yes
Contiguous: Yes
Permitted: Yes
Wet space: No
Addition: No
Conversion: No

11 Floor 2 - Kitchen

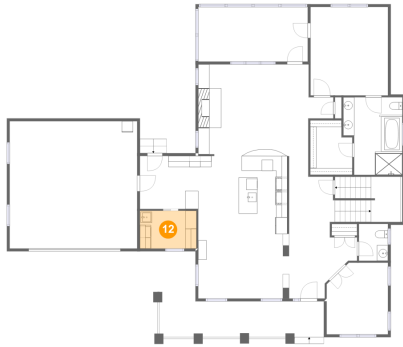


Max Dimensions: 16'4" x 13'1"
Calculated Area: 209 sq. ft
Included: Yes

Heated: Yes
Finished: Yes
Enclosed: Yes
Contiguous: Yes
Permitted: Yes
Wet space: No
Addition: No
Conversion: No

6030 Stickley Lane, Highfields, Cave Spring, Roanoke, Roanoke County, Virginia, United States, 24018

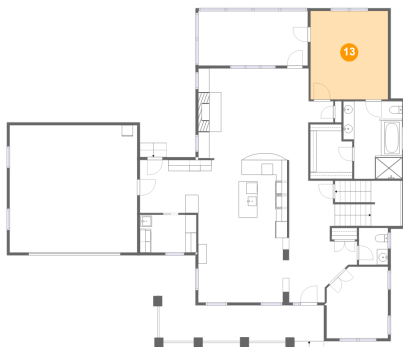
12 Floor 2 - Laundry



Max Dimensions: 10'2" x 6'9"
Calculated Area: 69 sq. ft
Included: Yes

Heated: Yes
Finished: Yes
Enclosed: Yes
Contiguous: Yes
Permitted: Yes
Wet space: No
Addition: No
Conversion: No

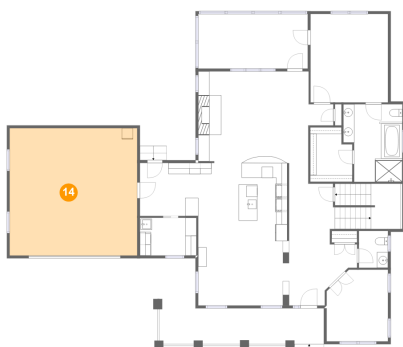
13 Floor 2 - Primary Bedroom



Max Dimensions: 14'0" x 15'11"
Calculated Area: 223 sq. ft
Included: Yes

Heated: Yes
Finished: Yes
Enclosed: Yes
Contiguous: Yes
Permitted: Yes
Wet space: No
Addition: No
Conversion: No

14 Floor 2 - Garage

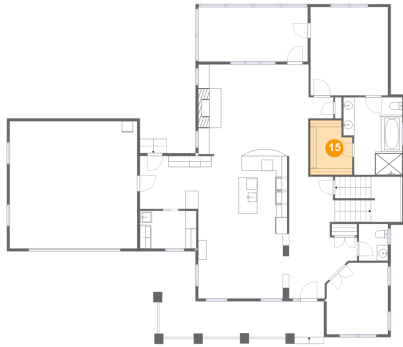


Max Dimensions: 23'0" x 22'11"
Calculated Area: 528 sq. ft
Included: No

Heated: No
Finished: No
Enclosed: Yes
Contiguous: Yes
Permitted: Yes
Wet space: No
Addition: No
Conversion: No

6030 Stickley Lane, Highfields, Cave Spring, Roanoke, Roanoke County, Virginia, United States, 24018

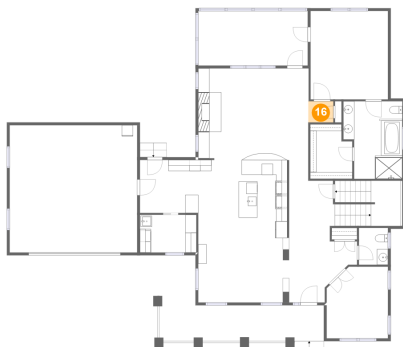
15 Floor 2 - W.I.C.



Max Dimensions: 7'7" x 9'10"
Calculated Area: 69 sq. ft
Included: Yes

Heated: Yes
Finished: Yes
Enclosed: Yes
Contiguous: Yes
Permitted: Yes
Wet space: No
Addition: No
Conversion: No

16 Floor 2 - Hall



Max Dimensions: 4'6" x 3'10"
Calculated Area: 17 sq. ft
Included: Yes

Heated: Yes
Finished: Yes
Enclosed: Yes
Contiguous: Yes
Permitted: Yes
Wet space: No
Addition: No
Conversion: No

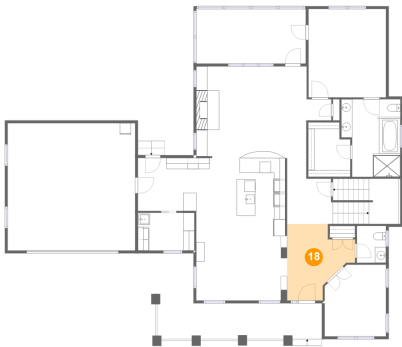
17 Floor 2 - Porch



Max Dimensions: 29'8" x 15'5"
Calculated Area: 250 sq. ft
Included: No

Heated: No
Finished: Yes
Enclosed: No
Contiguous: Yes
Permitted: Yes
Wet space: No
Addition: No
Conversion: No

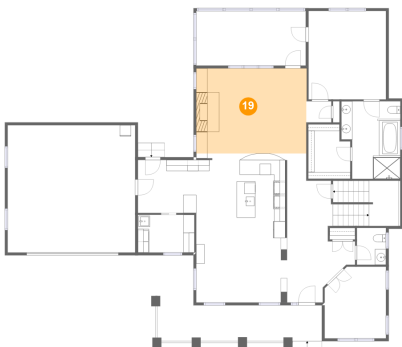
18 Floor 2 - Foyer



Max Dimensions: 12'3" x 13'9"
Calculated Area: 124 sq. ft
Included: Yes

Heated: Yes
Finished: Yes
Enclosed: Yes
Contiguous: Yes
Permitted: Yes
Wet space: No
Addition: No
Conversion: No

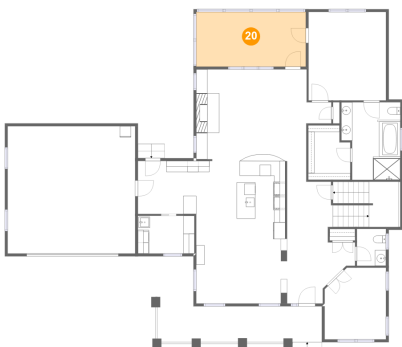
19 Floor 2 - Family Room



Max Dimensions: 19'11" x 15'4"
Calculated Area: 305 sq. ft
Included: Yes

Heated: Yes
Finished: Yes
Enclosed: Yes
Contiguous: Yes
Permitted: Yes
Wet space: No
Addition: No
Conversion: No

20 Floor 2 - Screened Porch



Max Dimensions: 19'9" x 9'10"
Calculated Area: 194 sq. ft
Included: No

Heated: No
Finished: Yes
Enclosed: No
Contiguous: Yes
Permitted: Yes
Wet space: No
Addition: No
Conversion: No

6030 Stickley Lane, Highfields, Cave Spring, Roanoke, Roanoke County, Virginia, United States, 24018

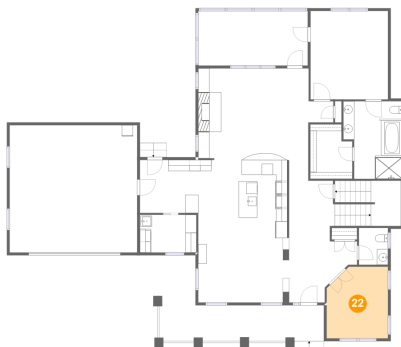
21 Floor 2 - WC



Max Dimensions: 5'3" x 6'8"
Calculated Area: 35 sq. ft
Included: Yes

Heated: Yes
Finished: Yes
Enclosed: Yes
Contiguous: Yes
Permitted: Yes
Wet space: Yes
Addition: No
Conversion: No

22 Floor 2 - Office



Max Dimensions: 11'1" x 12'11"
Calculated Area: 135 sq. ft
Included: Yes

Heated: Yes
Finished: Yes
Enclosed: Yes
Contiguous: Yes
Permitted: Yes
Wet space: No
Addition: No
Conversion: No

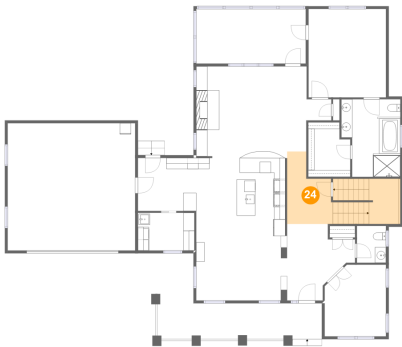
23 Floor 2 - Dining Area



Max Dimensions: 16'5" x 13'9"
Calculated Area: 226 sq. ft
Included: Yes

Heated: Yes
Finished: Yes
Enclosed: Yes
Contiguous: Yes
Permitted: Yes
Wet space: No
Addition: No
Conversion: No

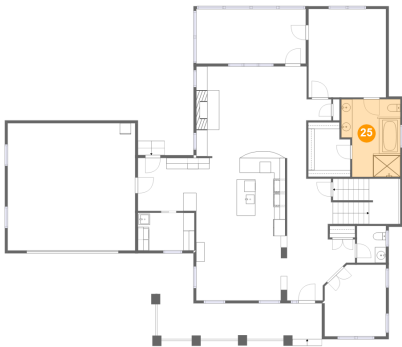
24 Floor 2 - Hall



Max Dimensions: 8'3" x 13'1"
Calculated Area: 180 sq. ft
Included: Yes

Heated: Yes
Finished: Yes
Enclosed: Yes
Contiguous: Yes
Permitted: Yes
Wet space: No
Addition: No
Conversion: No

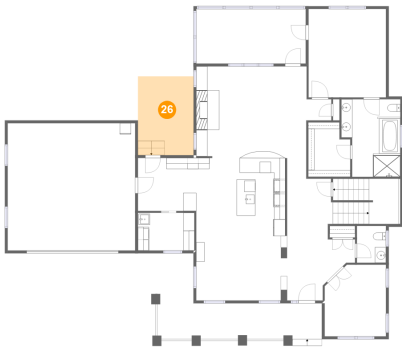
25 Floor 2 - Primary Bath



Max Dimensions: 10'8" x 14'0"
Calculated Area: 135 sq. ft
Included: Yes

Heated: Yes
Finished: Yes
Enclosed: Yes
Contiguous: Yes
Permitted: Yes
Wet space: Yes
Addition: No
Conversion: No

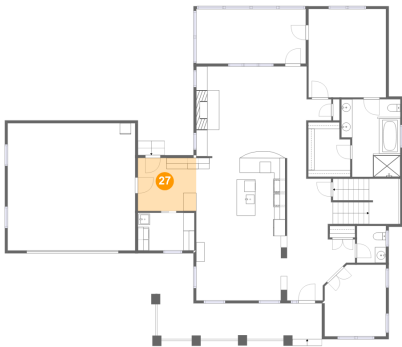
26 Floor 2 - Patio



Max Dimensions: 10'0" x 14'3"
Calculated Area: 143 sq. ft
Included: No

Heated: No
Finished: Yes
Enclosed: No
Contiguous: Yes
Permitted: Yes
Wet space: No
Addition: No
Conversion: No

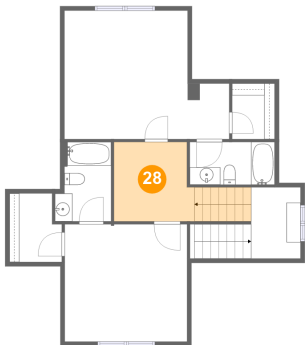
27 Floor 2 - Hall



Max Dimensions: 10'6" x 9'7"
Calculated Area: 100 sq. ft
Included: Yes

Heated: Yes
Finished: Yes
Enclosed: Yes
Contiguous: Yes
Permitted: Yes
Wet space: No
Addition: No
Conversion: No

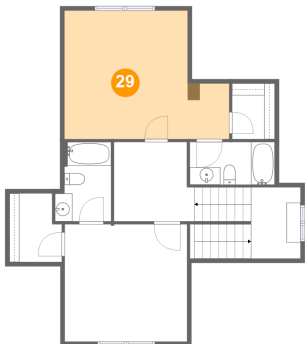
28 Floor 3 - Sitting Room



Max Dimensions: 9'3" x 9'1"
Calculated Area: 105 sq. ft
Included: Yes

Heated: Yes
Finished: Yes
Enclosed: Yes
Contiguous: Yes
Permitted: Yes
Wet space: No
Addition: No
Conversion: No

29 Floor 3 - Bedroom

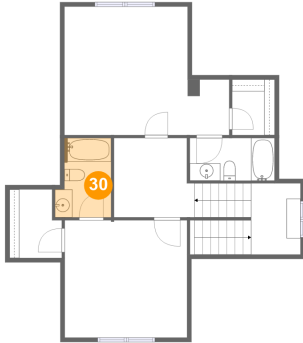


Max Dimensions: 18'11" x 14'9"
Calculated Area: 238 sq. ft
Included: Yes

Heated: Yes
Finished: Yes
Enclosed: Yes
Contiguous: Yes
Permitted: Yes
Wet space: No
Addition: No
Conversion: No

6030 Stickley Lane, Highfields, Cave Spring, Roanoke, Roanoke County, Virginia, United States, 24018

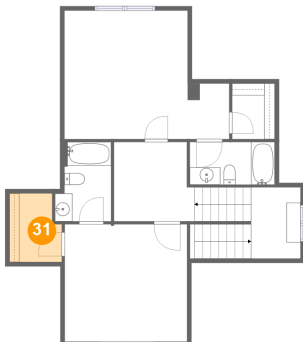
30 Floor 3 - Bath



Max Dimensions: 6'5" x 9'1"
Calculated Area: 52 sq. ft
Included: Yes

Heated: Yes
Finished: Yes
Enclosed: Yes
Contiguous: Yes
Permitted: Yes
Wet space: Yes
Addition: No
Conversion: No

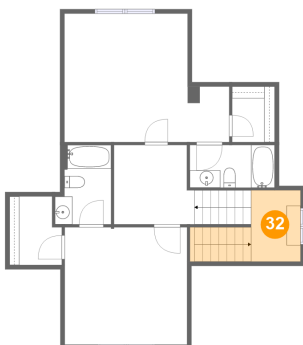
31 Floor 3 - W.I.C.



Max Dimensions: 6'0" x 7'10"
Calculated Area: 43 sq. ft
Included: Yes

Heated: Yes
Finished: Yes
Enclosed: Yes
Contiguous: Yes
Permitted: Yes
Wet space: No
Addition: No
Conversion: No

32 Floor 3 - Hall



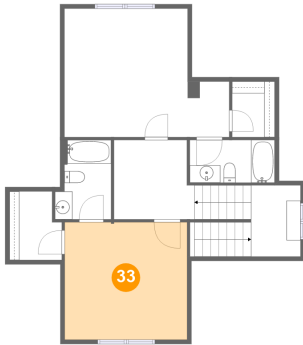
Max Dimensions: 5'8" x 8'2"
Calculated Area: 74 sq. ft
Included: Yes

Heated: Yes
Finished: Yes
Enclosed: Yes
Contiguous: Yes
Permitted: Yes
Wet space: No
Addition: No
Conversion: No

Home report

6030 Stickley Lane, Highfields, Cave Spring, Roanoke, Roanoke County, Virginia, United States, 24018

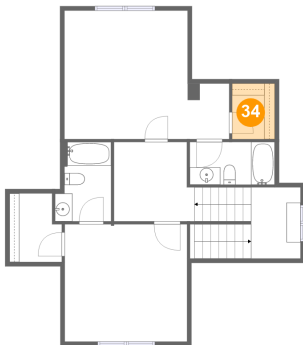
33 Floor 3 - Bedroom



Max Dimensions: 14'0" x 13'5"
Calculated Area: 189 sq. ft
Included: Yes

Heated: Yes
Finished: Yes
Enclosed: Yes
Contiguous: Yes
Permitted: Yes
Wet space: No
Addition: No
Conversion: No

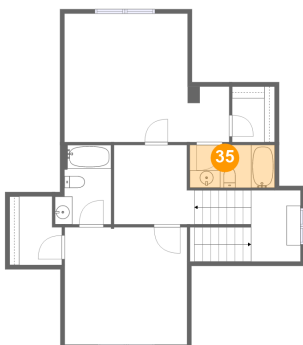
34 Floor 3 - W.I.C.



Max Dimensions: 4'11" x 6'4"
Calculated Area: 31 sq. ft
Included: Yes

Heated: Yes
Finished: Yes
Enclosed: Yes
Contiguous: Yes
Permitted: Yes
Wet space: No
Addition: No
Conversion: No

35 Floor 3 - Bath



Max Dimensions: 9'9" x 4'11"
Calculated Area: 48 sq. ft
Included: Yes

Heated: Yes
Finished: Yes
Enclosed: Yes
Contiguous: Yes
Permitted: Yes
Wet space: Yes
Addition: No
Conversion: No