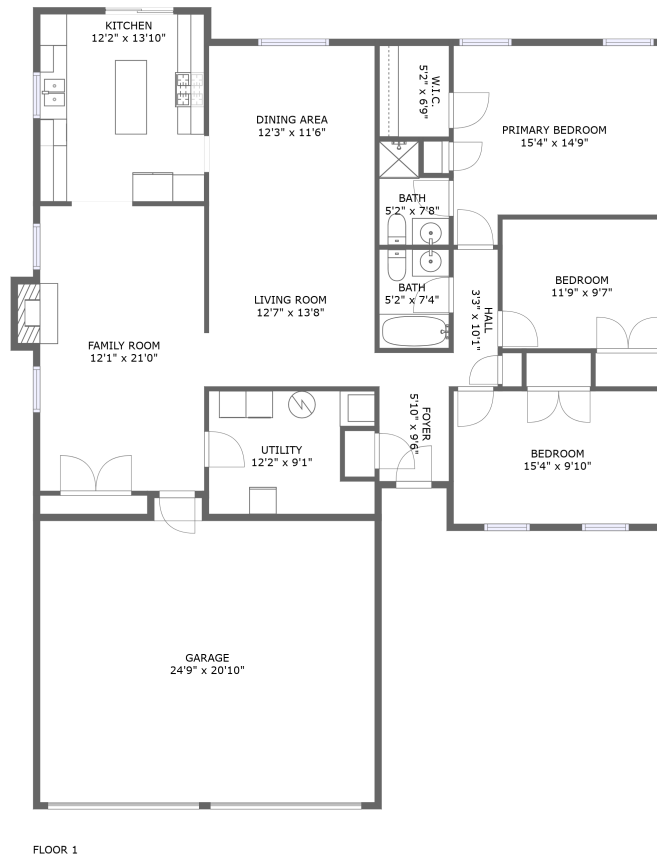



7015 Autumn Wood Lane, Roanoke, Virginia, United States



Property summary

 **1** Garages

 **3** Bedrooms

 **2** Bathrooms

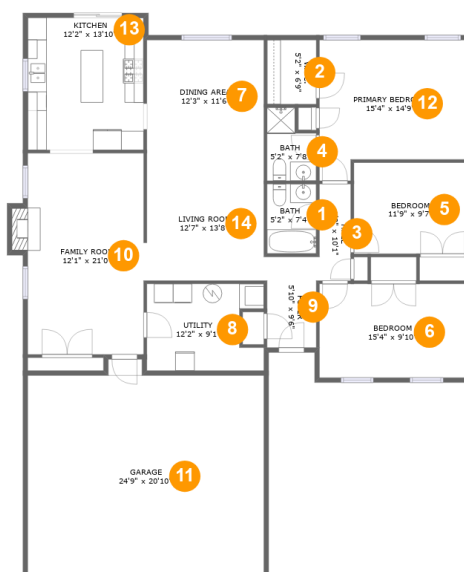
 **0** Half baths

 **1** Floors

 **1,694**
Gross living
area sqft

 **2,257**
Total sqft

7015 Autumn Wood Lane, Roanoke, Virginia, United States



Room dimensions

Floor 1

Total sqft: 2257 Living area: 1694

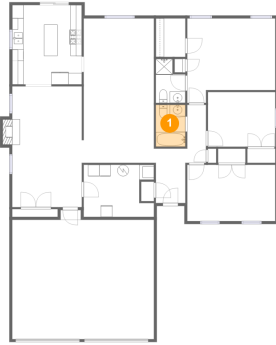
#		Dimensions	sqft	Counted as living area
1	Bath	5'2" x 7'4"	38 sq. ft	Yes
2	W.I.C.	5'2" x 6'9"	35 sq. ft	Yes
3	Hall	3'3" x 10'1"	33 sq. ft	Yes
4	Bath	5'2" x 7'8"	33 sq. ft	Yes
5	Bedroom	11'9" x 9'7"	112 sq. ft	Yes
6	Bedroom	15'4" x 9'10"	151 sq. ft	Yes
7	Dining Area	12'3" x 11'6"	141 sq. ft	Yes
8	Utility	12'2" x 9'1"	101 sq. ft	Yes
9	Foyer	5'10" x 9'6"	51 sq. ft	Yes
10	Family Room	12'1" x 21'0"	263 sq. ft	Yes
11	Garage	24'9" x 20'10"	520 sq. ft	No

7015 Autumn Wood Lane, Roanoke, Virginia, United States

#		Dimensions	sqft	Counted as living area
12	Primary Bedroom	15'4" x 14'9"	199 sq. ft	Yes
13	Kitchen	12'2" x 13'10"	168 sq. ft	Yes
14	Living Room	12'7" x 13'8"	169 sq. ft	Yes

7015 Autumn Wood Lane, Roanoke, Virginia, United States

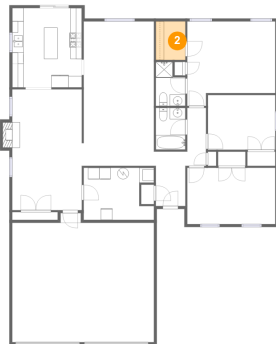
1 Floor 1 - Bath



Dimensions: 5'2" x 7'4"
Area: 38 sq. ft
Counted as living area: Yes

Heated: Yes
Finished: Yes
Enclosed: Yes
Contiguous: Yes
Permitted: Yes
Wet space: Yes
Addition: No
Conversion: No

2 Floor 1 - W.I.C.



Dimensions: 5'2" x 6'9"
Area: 35 sq. ft
Counted as living area: Yes

Heated: Yes
Finished: Yes
Enclosed: Yes
Contiguous: Yes
Permitted: Yes
Wet space: No
Addition: No
Conversion: No

7015 Autumn Wood Lane, Roanoke, Virginia, United States

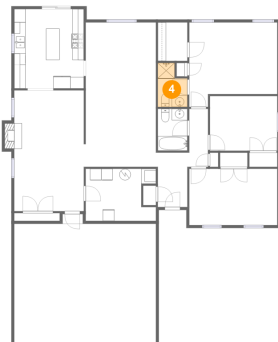
3 Floor 1 - Hall



Dimensions: 3'3" x 10'1"
Area: 33 sq. ft
Counted as living area: Yes

Heated: Yes
Finished: Yes
Enclosed: Yes
Contiguous: Yes
Permitted: Yes
Wet space: No
Addition: No
Conversion: No

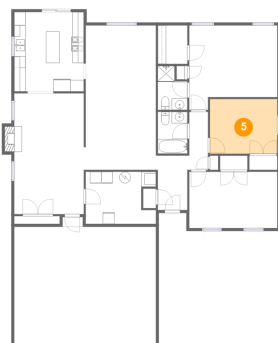
4 Floor 1 - Bath



Dimensions: 5'2" x 7'8"
Area: 33 sq. ft
Counted as living area: Yes

Heated: Yes
Finished: Yes
Enclosed: Yes
Contiguous: Yes
Permitted: Yes
Wet space: Yes
Addition: No
Conversion: No

5 Floor 1 - Bedroom

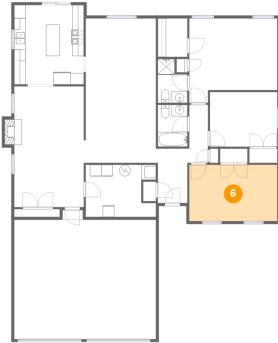


Dimensions: 11'9" x 9'7"
Area: 112 sq. ft
Counted as living area: Yes

Heated: Yes
Finished: Yes
Enclosed: Yes
Contiguous: Yes
Permitted: Yes
Wet space: No
Addition: No
Conversion: No

7015 Autumn Wood Lane, Roanoke, Virginia, United States

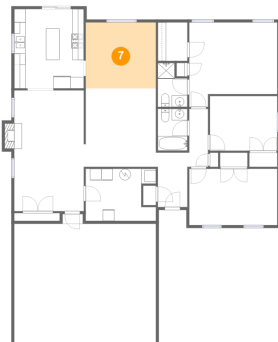
6 Floor 1 - Bedroom



Dimensions: 15'4" x 9'10"
Area: 151 sq. ft
Counted as living area: Yes

Heated: Yes
Finished: Yes
Enclosed: Yes
Contiguous: Yes
Permitted: Yes
Wet space: No
Addition: No
Conversion: No

7 Floor 1 - Dining Area



Dimensions: 12'3" x 11'6"
Area: 141 sq. ft
Counted as living area: Yes

Heated: Yes
Finished: Yes
Enclosed: Yes
Contiguous: Yes
Permitted: Yes
Wet space: No
Addition: No
Conversion: No

8 Floor 1 - Utility

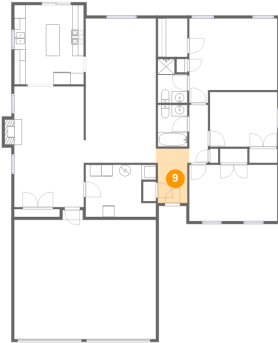


Dimensions: 12'2" x 9'1"
Area: 101 sq. ft
Counted as living area: Yes

Heated: Yes
Finished: Yes
Enclosed: Yes
Contiguous: Yes
Permitted: Yes
Wet space: No
Addition: No
Conversion: No

7015 Autumn Wood Lane, Roanoke, Virginia, United States

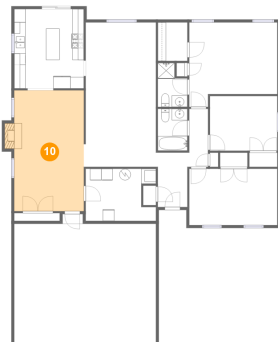
9 Floor 1 - Foyer



Dimensions: 5'10" x 9'6"
Area: 51 sq. ft
Counted as living area: Yes

Heated: Yes
Finished: Yes
Enclosed: Yes
Contiguous: Yes
Permitted: Yes
Wet space: No
Addition: No
Conversion: No

10 Floor 1 - Family Room



Dimensions: 12'1" x 21'0"
Area: 263 sq. ft
Counted as living area: Yes

Heated: Yes
Finished: Yes
Enclosed: Yes
Contiguous: Yes
Permitted: Yes
Wet space: No
Addition: No
Conversion: No

11 Floor 1 - Garage

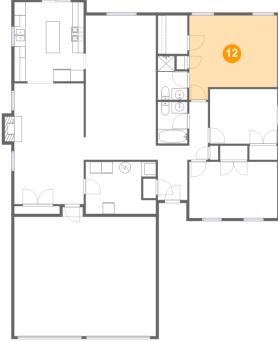


Dimensions: 24'9" x 20'10"
Area: 520 sq. ft
Counted as living area: No

Heated: No
Finished: No
Enclosed: Yes
Contiguous: Yes
Permitted: Yes
Wet space: No
Addition: No
Conversion: No

7015 Autumn Wood Lane, Roanoke, Virginia, United States

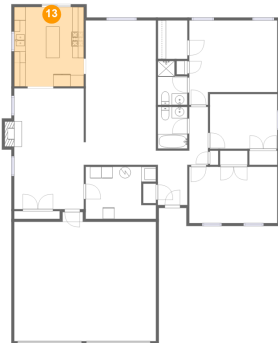
12 Floor 1 - Primary Bedroom



Dimensions: 15'4" x 14'9"
Area: 199 sq. ft
Counted as living area: Yes

Heated: Yes
Finished: Yes
Enclosed: Yes
Contiguous: Yes
Permitted: Yes
Wet space: No
Addition: No
Conversion: No

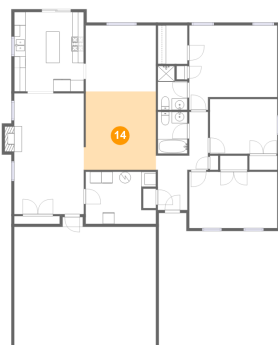
13 Floor 1 - Kitchen



Dimensions: 12'2" x 13'10"
Area: 168 sq. ft
Counted as living area: Yes

Heated: Yes
Finished: Yes
Enclosed: Yes
Contiguous: Yes
Permitted: Yes
Wet space: No
Addition: No
Conversion: No

14 Floor 1 - Living Room



Dimensions: 12'7" x 13'8"
Area: 169 sq. ft
Counted as living area: Yes

Heated: Yes
Finished: Yes
Enclosed: Yes
Contiguous: Yes
Permitted: Yes
Wet space: No
Addition: No
Conversion: No