

Home report

6355 Juliet Court, Homeplace, Roanoke, Roanoke County,
Virginia, United States, 24018



Total Area: 3548 sq. ft

Below Ground: 583 sq. ft, Floor 2: 1496 sq. ft, Floor 3: 1469 sq. ft

Excluded: Garage 753 sq. ft, Storage 45 sq. ft, Outdoor Deck Covered 489 sq. ft, Utility 68 sq. ft, Fireplace 24 sq. ft, Outdoor Porch Screen 247 sq. ft, Outdoor Porch 59 sq. ft, Outdoor Balcony 166 sq. ft

Property summary



3
Floors



4
Bedrooms



2
Bathrooms

Home report

**6355 Juliet Court, Homeplace, Roanoke, Roanoke County,
Virginia, United States, 24018**



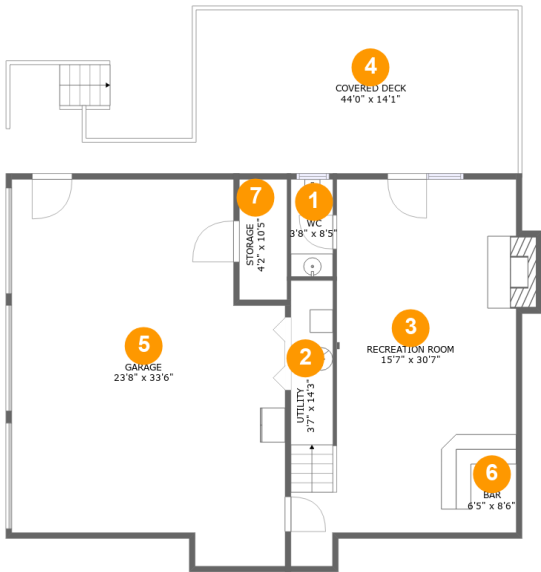
2
Half baths



1
Garages

Home report

6355 Juliet Court, Homeplace, Roanoke, Roanoke County,
Virginia, United States, 24018



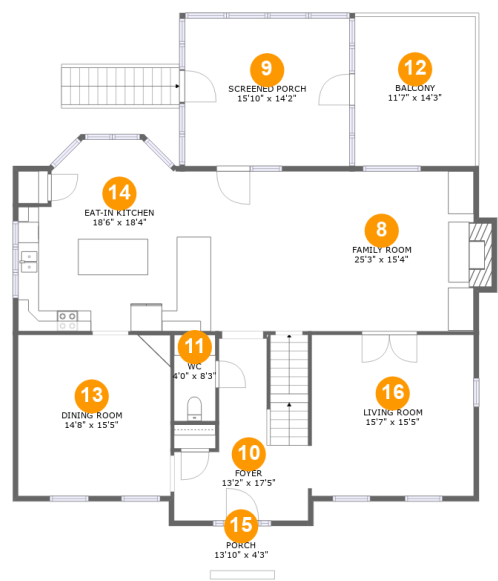
Room dimensions

Floor 1 Below ground Total:583sqft Excluded: 1367sqft

#		Max Dimensions	sqft	Included
1	WC	3'8" x 8'5"	31 sq. ft	Yes
2	Utility	3'7" x 14'3"	68 sq. ft	No
3	Recreation Room	15'7" x 30'7"	456 sq. ft	Yes
4	Covered Deck	44'0" x 14'1"	489 sq. ft	No
5	Garage	23'8" x 33'6"	698 sq. ft	No
6	Bar	6'5" x 8'6"	55 sq. ft	Yes
7	Storage	4'2" x 10'5"	43 sq. ft	No

Home report

6355 Juliet Court, Homeplace, Roanoke, Roanoke County,
Virginia, United States, 24018



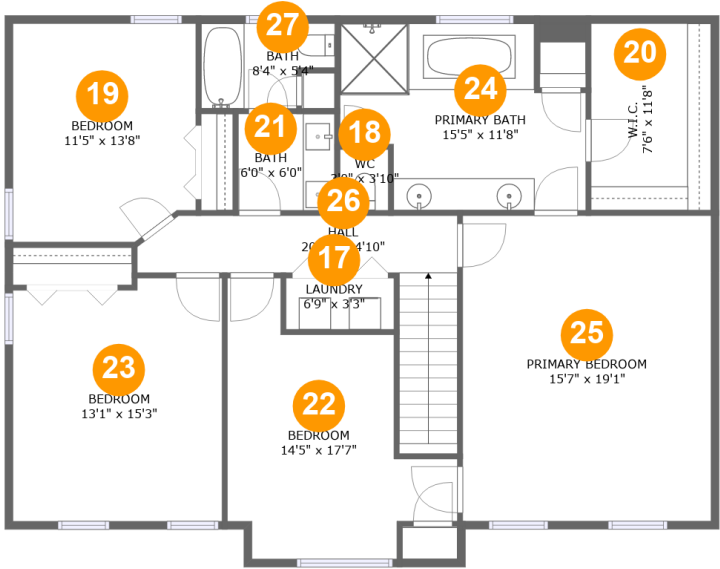
Room dimensions

Floor 2 Total:1496sqft Excluded: 484sqft

#		Max Dimensions	sqft	Included
8	Family Room	25'3" x 15'4"	398 sq. ft	Yes
9	Screened Porch	15'10" x 14'2"	224 sq. ft	No
10	Foyer	13'2" x 17'5"	178 sq. ft	Yes
11	WC	4'0" x 8'3"	33 sq. ft	Yes
12	Balcony	11'7" x 14'3"	166 sq. ft	No
13	Dining Room	14'8" x 15'5"	226 sq. ft	Yes
14	Eat-in Kitchen	18'6" x 18'4"	299 sq. ft	Yes
15	Porch	13'10" x 4'3"	59 sq. ft	No
16	Living Room	15'7" x 15'5"	240 sq. ft	Yes

Home report

6355 Juliet Court, Homeplace, Roanoke, Roanoke County,
Virginia, United States, 24018



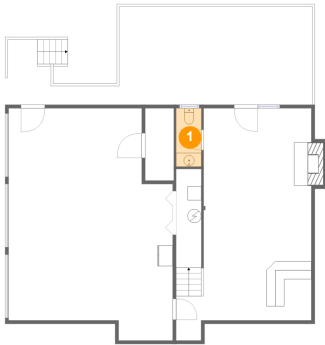
Room dimensions

Floor 3 Total:1469sqft Excluded: 0sqft

#		Max Dimensions	sqft	Included
17	Laundry	6'9" x 3'3"	22 sq. ft	Yes
18	WC	3'0" x 3'10"	11 sq. ft	Yes
19	Bedroom	11'5" x 13'8"	152 sq. ft	Yes
20	W.I.C.	7'6" x 11'8"	88 sq. ft	Yes
21	Bath	6'0" x 6'0"	36 sq. ft	Yes
22	Bedroom	14'5" x 17'7"	170 sq. ft	Yes
23	Bedroom	13'1" x 15'3"	193 sq. ft	Yes
24	Primary Bath	15'5" x 11'8"	152 sq. ft	Yes
25	Primary Bedroom	15'7" x 19'1"	297 sq. ft	Yes
26	Hall	20'0" x 14'10"	110 sq. ft	Yes
27	Bath	8'4" x 5'4"	38 sq. ft	Yes

6355 Juliet Court, Homeplace, Roanoke, Roanoke County,
Virginia, United States, 24018

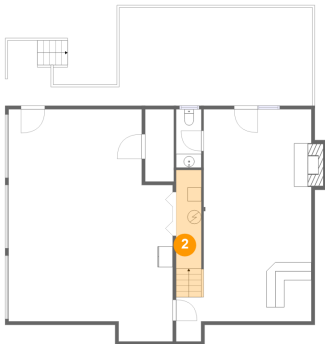
1 Floor 1 - WC



Max Dimensions: 3'8" x 8'5"
Calculated Area: 31 sq. ft
Included: Yes

Heated: Yes
Finished: Yes
Enclosed: Yes
Contiguous: Yes
Permitted: Yes
Wet space: Yes
Addition: No
Conversion: No

2 Floor 1 - Utility

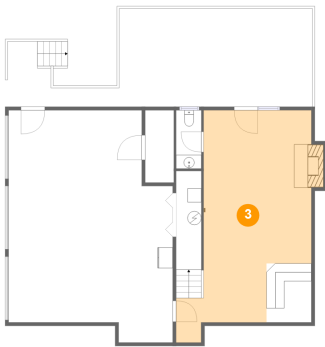


Max Dimensions: 3'7" x
14'3"
Calculated Area: 68 sq. ft
Included: No

Heated: Yes
Finished: No
Enclosed: Yes
Contiguous:
Yes
Permitted: Yes
Wet space: No
Addition: No
Conversion: No

6355 Juliet Court, Homeplace, Roanoke, Roanoke County,
Virginia, United States, 24018

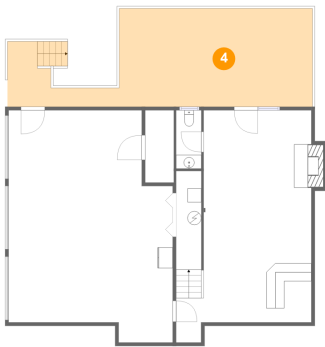
3 Floor 1 - Recreation Room



Max Dimensions: 15'7" x 30'7"
Calculated Area: 456 sq. ft
Included: Yes

Heated: Yes
Finished: Yes
Enclosed: Yes
Contiguous: Yes
Permitted: Yes
Wet space: No
Addition: No
Conversion: No

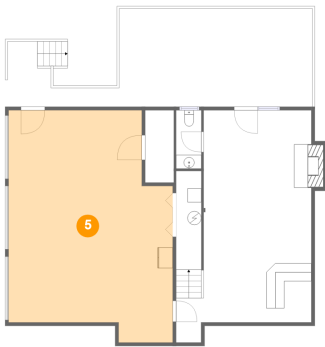
4 Floor 1 - Covered Deck



Max Dimensions: 44'0" x 14'1"
Calculated Area: 489 sq. ft
Included: No

Heated: No
Finished: Yes
Enclosed: No
Contiguous: Yes
Permitted: Yes
Wet space: No
Addition: No
Conversion: No

5 Floor 1 - Garage

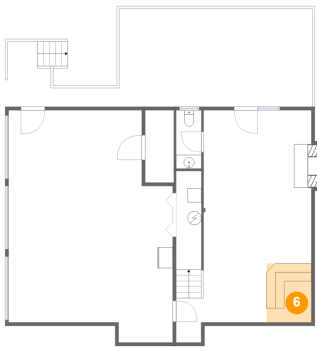


Max Dimensions: 23'8" x 33'6"
Calculated Area: 698 sq. ft
Included: No

Heated: No
Finished: No
Enclosed: Yes
Contiguous: Yes
Permitted: Yes
Wet space: No
Addition: No
Conversion: No

6355 Juliet Court, Homeplace, Roanoke, Roanoke County,
Virginia, United States, 24018

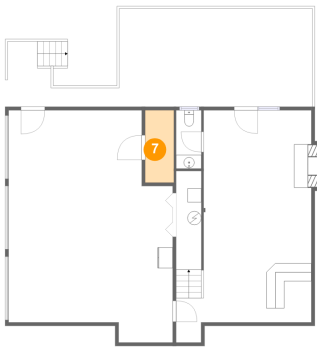
6 Floor 1 - Bar



Max Dimensions: 6'5" x 8'6"
Calculated Area: 55 sq. ft
Included: Yes

Heated: Yes
Finished: Yes
Enclosed: Yes
Contiguous: Yes
Permitted: Yes
Wet space: No
Addition: No
Conversion: No

7 Floor 1 - Storage



Max Dimensions: 4'2" x 10'5"
Calculated Area: 43 sq. ft
Included: No

Heated: No
Finished: No
Enclosed: No
Contiguous: Yes
Permitted: Yes
Wet space: No
Addition: No
Conversion: No

8 Floor 2 - Family Room

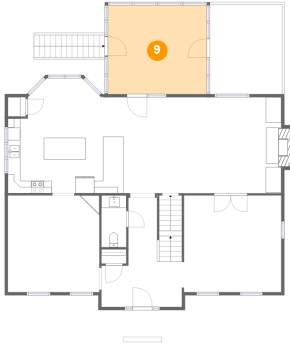


Max Dimensions: 25'3" x 15'4"
Calculated Area: 398 sq. ft
Included: Yes

Heated: Yes
Finished: Yes
Enclosed: Yes
Contiguous: Yes
Permitted: Yes
Wet space: No
Addition: No
Conversion: No

6355 Juliet Court, Homeplace, Roanoke, Roanoke County,
Virginia, United States, 24018

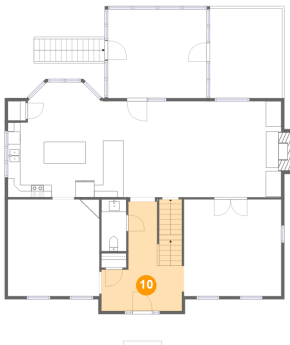
9 Floor 2 - Screened Porch



Max Dimensions: 15'10" x 14'2"
Calculated Area: 224 sq. ft
Included: No

Heated: No
Finished: Yes
Enclosed: No
Contiguous: Yes
Permitted: Yes
Wet space: No
Addition: No
Conversion: No

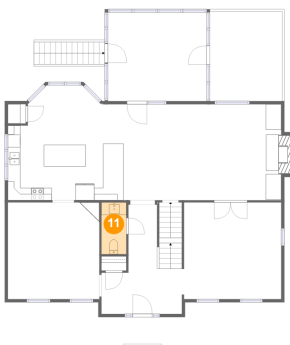
10 Floor 2 - Foyer



Max Dimensions: 13'2" x 17'5"
Calculated Area: 178 sq. ft
Included: Yes

Heated: Yes
Finished: Yes
Enclosed: Yes
Contiguous: Yes
Permitted: Yes
Wet space: No
Addition: No
Conversion: No

11 Floor 2 - WC

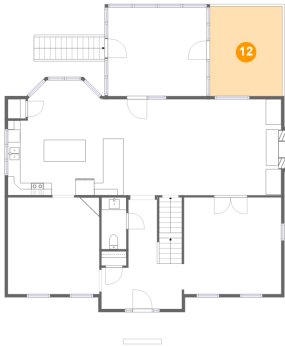


Max Dimensions: 4'0" x 8'3"
Calculated Area: 33 sq. ft
Included: Yes

Heated: Yes
Finished: Yes
Enclosed: Yes
Contiguous: Yes
Permitted: Yes
Wet space: Yes
Addition: No
Conversion: No

6355 Juliet Court, Homeplace, Roanoke, Roanoke County,
Virginia, United States, 24018

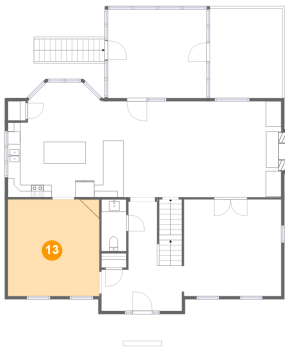
12 Floor 2 - Balcony



Max Dimensions: 11'7" x 14'3"
Calculated Area: 166 sq. ft
Included: No

Heated: No
Finished: Yes
Enclosed: No
Contiguous: Yes
Permitted: Yes
Wet space: No
Addition: No
Conversion: No

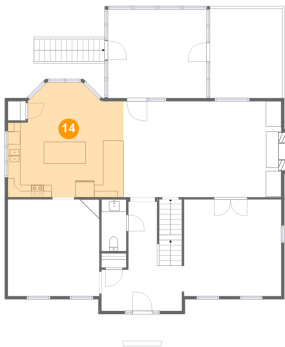
13 Floor 2 - Dining Room



Max Dimensions: 14'8" x 15'5"
Calculated Area: 226 sq. ft
Included: Yes

Heated: Yes
Finished: Yes
Enclosed: Yes
Contiguous: Yes
Permitted: Yes
Wet space: No
Addition: No
Conversion: No

14 Floor 2 - Eat-in Kitchen

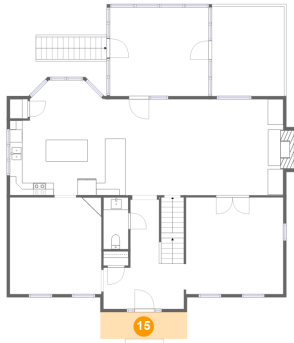


Max Dimensions: 18'6" x 18'4"
Calculated Area: 299 sq. ft
Included: Yes

Heated: Yes
Finished: Yes
Enclosed: Yes
Contiguous: Yes
Permitted: Yes
Wet space: No
Addition: No
Conversion: No

6355 Juliet Court, Homeplace, Roanoke, Roanoke County,
Virginia, United States, 24018

15 Floor 2 - Porch



Max Dimensions: 13'10" x 4'3"
Calculated Area: 59 sq. ft
Included: No

Heated: No
Finished: Yes
Enclosed: No
Contiguous: Yes
Permitted: Yes
Wet space: No
Addition: No
Conversion: No

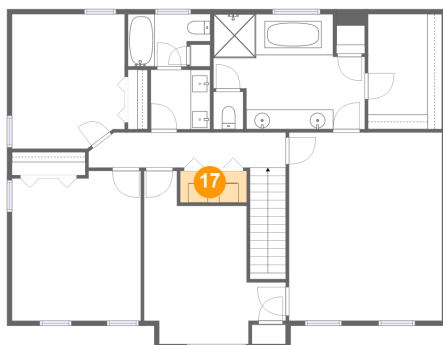
16 Floor 2 - Living Room



Max Dimensions: 15'7" x 15'5"
Calculated Area: 240 sq. ft
Included: Yes

Heated: Yes
Finished: Yes
Enclosed: Yes
Contiguous: Yes
Permitted: Yes
Wet space: No
Addition: No
Conversion: No

17 Floor 3 - Laundry

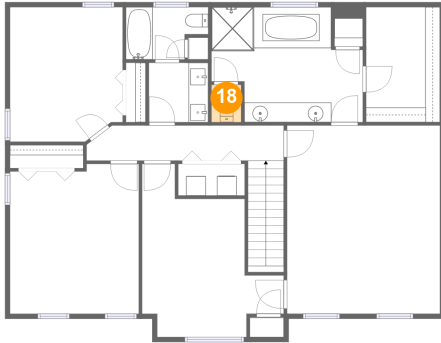


Max Dimensions: 6'9" x 3'3"
Calculated Area: 22 sq. ft
Included: Yes

Heated: Yes
Finished: Yes
Enclosed: Yes
Contiguous: Yes
Permitted: Yes
Wet space: No
Addition: No
Conversion: No

6355 Juliet Court, Homeplace, Roanoke, Roanoke County,
Virginia, United States, 24018

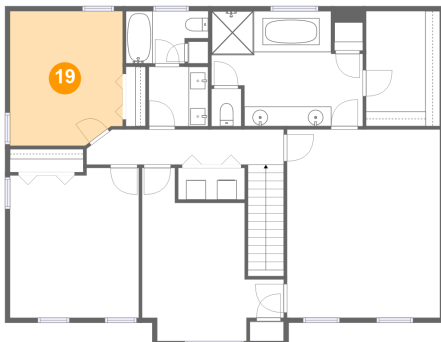
18 Floor 3 - WC



Max Dimensions: 3'0" x 3'10"
Calculated Area: 11 sq. ft
Included: Yes

Heated: Yes
Finished: Yes
Enclosed: Yes
Contiguous: Yes
Permitted: Yes
Wet space: Yes
Addition: No
Conversion: No

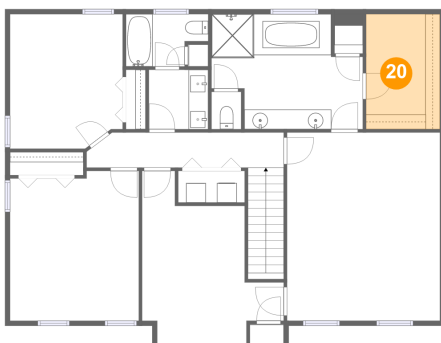
19 Floor 3 - Bedroom



Max Dimensions: 11'5" x 13'8"
Calculated Area: 152 sq. ft
Included: Yes

Heated: Yes
Finished: Yes
Enclosed: Yes
Contiguous: Yes
Permitted: Yes
Wet space: No
Addition: No
Conversion: No

20 Floor 3 - W.I.C.

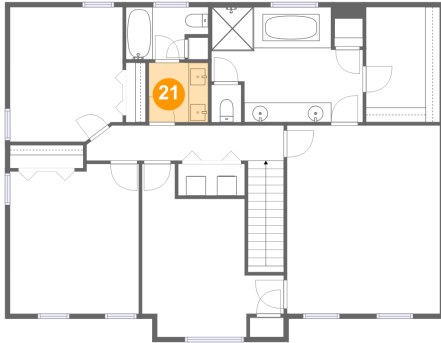


Max Dimensions: 7'6" x 11'8"
Calculated Area: 88 sq. ft
Included: Yes

Heated: Yes
Finished: Yes
Enclosed: Yes
Contiguous: Yes
Permitted: Yes
Wet space: No
Addition: No
Conversion: No

6355 Juliet Court, Homeplace, Roanoke, Roanoke County,
Virginia, United States, 24018

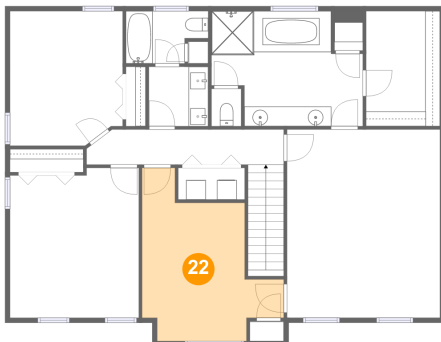
21 Floor 3 - Bath



Max Dimensions: 6'0" x 6'0"
Calculated Area: 36 sq. ft
Included: Yes

Heated: Yes
Finished: Yes
Enclosed: Yes
Contiguous: Yes
Permitted: Yes
Wet space: Yes
Addition: No
Conversion: No

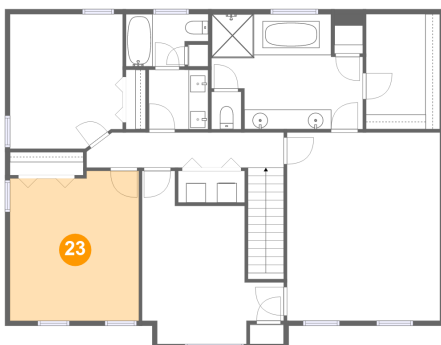
22 Floor 3 - Bedroom



Max Dimensions: 14'5" x 17'7"
Calculated Area: 170 sq. ft
Included: Yes

Heated: Yes
Finished: Yes
Enclosed: Yes
Contiguous: Yes
Permitted: Yes
Wet space: No
Addition: No
Conversion: No

23 Floor 3 - Bedroom

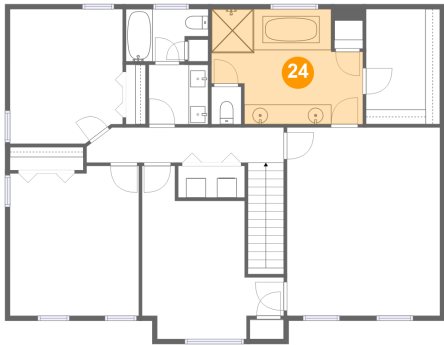


Max Dimensions: 13'1" x 15'3"
Calculated Area: 193 sq. ft
Included: Yes

Heated: Yes
Finished: Yes
Enclosed: Yes
Contiguous: Yes
Permitted: Yes
Wet space: No
Addition: No
Conversion: No

6355 Juliet Court, Homeplace, Roanoke, Roanoke County,
Virginia, United States, 24018

24 Floor 3 - Primary Bath



Max Dimensions: 15'5" x 11'8"
Calculated Area: 152 sq. ft
Included: Yes

Heated: Yes
Finished: Yes
Enclosed: Yes
Contiguous: Yes
Permitted: Yes
Wet space: Yes
Addition: No
Conversion: No

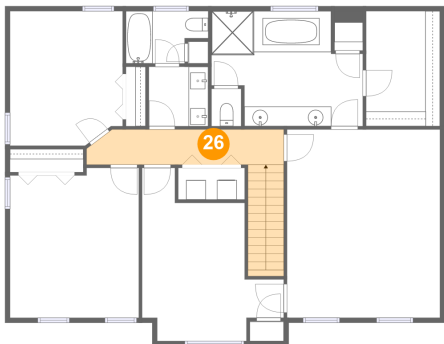
25 Floor 3 - Primary Bedroom



Max Dimensions: 15'7" x 19'1"
Calculated Area: 297 sq. ft
Included: Yes

Heated: Yes
Finished: Yes
Enclosed: Yes
Contiguous: Yes
Permitted: Yes
Wet space: No
Addition: No
Conversion: No

26 Floor 3 - Hall

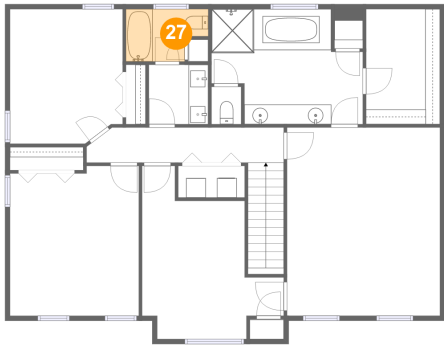


Max Dimensions: 20'0" x 14'10"
Calculated Area: 110 sq. ft
Included: Yes

Heated: Yes
Finished: Yes
Enclosed: Yes
Contiguous: Yes
Permitted: Yes
Wet space: No
Addition: No
Conversion: No

6355 Juliet Court, Homeplace, Roanoke, Roanoke County,
Virginia, United States, 24018

27 Floor 3 - Bath



Max Dimensions: 8'4" x 5'4"
Calculated Area: 38 sq. ft
Included: Yes

Heated: Yes
Finished: Yes
Enclosed: Yes
Contiguous: Yes
Permitted: Yes
Wet space: Yes
Addition: No
Conversion: No