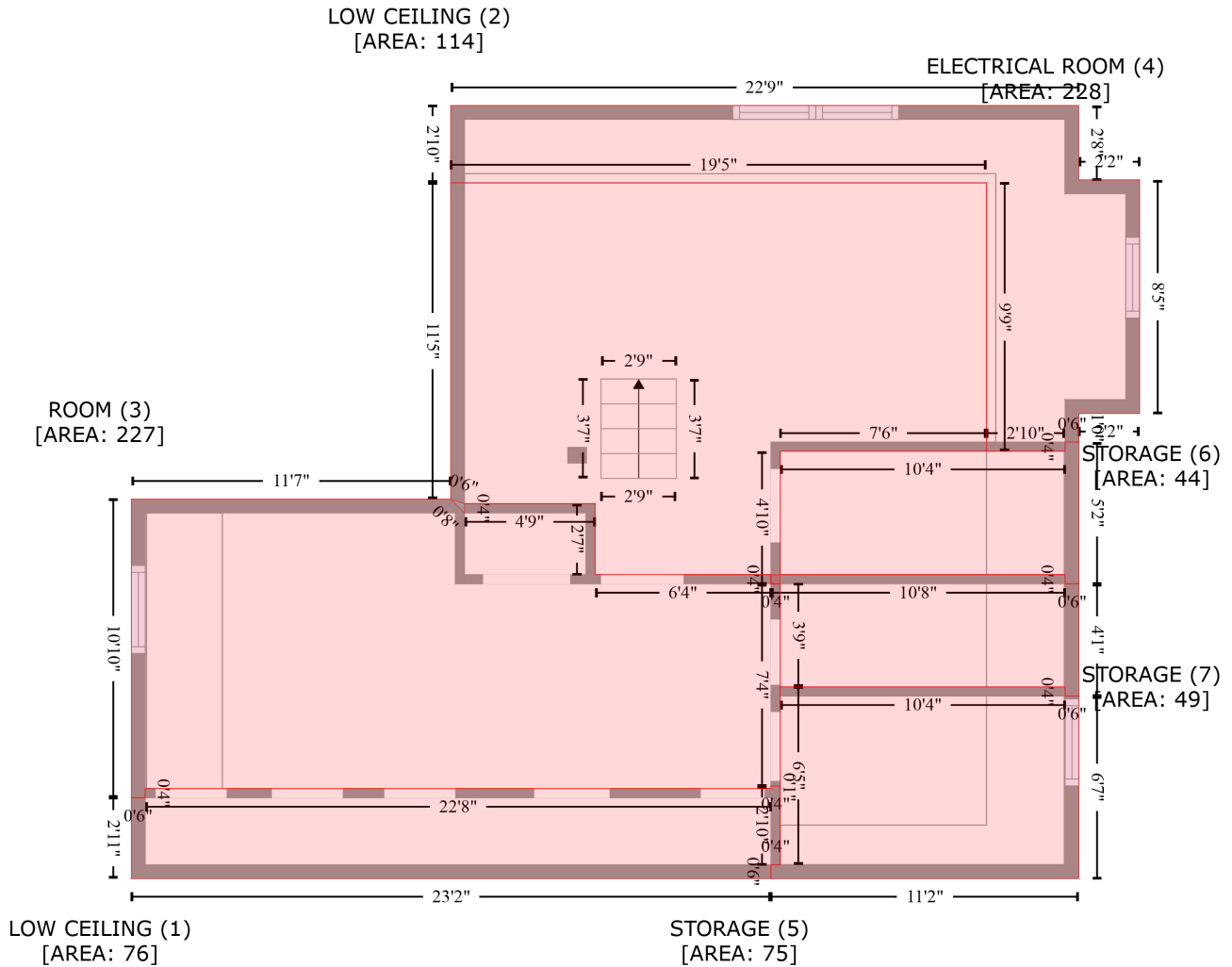


# 211 S 100 W, Wellsville, UT, US

Gross Living Area: 1161 sq. ft



| Space                            | Area (sq. ft) | Calculation   |
|----------------------------------|---------------|---|
| LOW CEILING<br>(Non-living area) | 76            | $-\left((311.4 + 311.4) * (426.8 - 461) + (311.4 + 307.4) * (461 - 461) + (307.4 + 307.4) * (461 - 467) + (307.4 + 29.8) * (467 - 467) + (29.8 + 29.8) * (467 - 432) + (29.8 + 35.8) * (432 - 432) + (35.8 + 35.8) * (432 - 428) + (35.8 + 307.4) * (428 - 428) + (307.4 + 307.4) * (428 - 426.8) + (307.4 + 311.4) * (426.8 - 426.8)\right) * 0.5 * 0.00694$   |
| LOW CEILING<br>(Non-living area) | 114           | $-\left((441 + 441) * (131.4 - 163.7) + (441 + 467.4) * (163.7 - 163.7) + (467.4 + 467.4) * (163.7 - 265.1) + (467.4 + 441.1) * (265.1 - 265.1) + (441.1 + 441.1) * (265.1 - 277.5) + (441.1 + 435.1) * (277.5 - 277.5) + (435.1 + 435.1) * (277.5 - 281.5) + (435.1 + 401) * (281.5 - 281.5) + (401 + 401) * (281.5 - 165) + (401 + 168.4) * (165 - 165) + (168.4 + 168.4) * (165 - 131.4) + (168.4 + 441) * (131.4 - 131.4)\right) * 0.5 * 0.00694$ |
| ROOM<br>(Non-living area)        | 227           | $-\left((168.4 + 174.4) * (302.3 - 308.3) + (174.4 + 174.4) * (308.3 - 304.3) + (174.4 + 231.1) * (304.3 - 304.3) + (231.1 + 231.1) * (304.3 - 335) + (231.1 + 307.4) * (335 - 335) + (307.4 + 307.4) * (335 - 339) + (307.4 + 311.4) * (339 - 339) + (311.4 + 311.4) * (339 - 426.8) + (311.4 + 307.4) * (426.8 - 426.8) + (307.4 + 307.4) * (426.8 - 428) + (307.4 + 35.8) * (428 - 428) + (35.8 + 35.8) * (428 - 428)\right)$                      |

# 211 S 100 W,Wellsville,UT,US

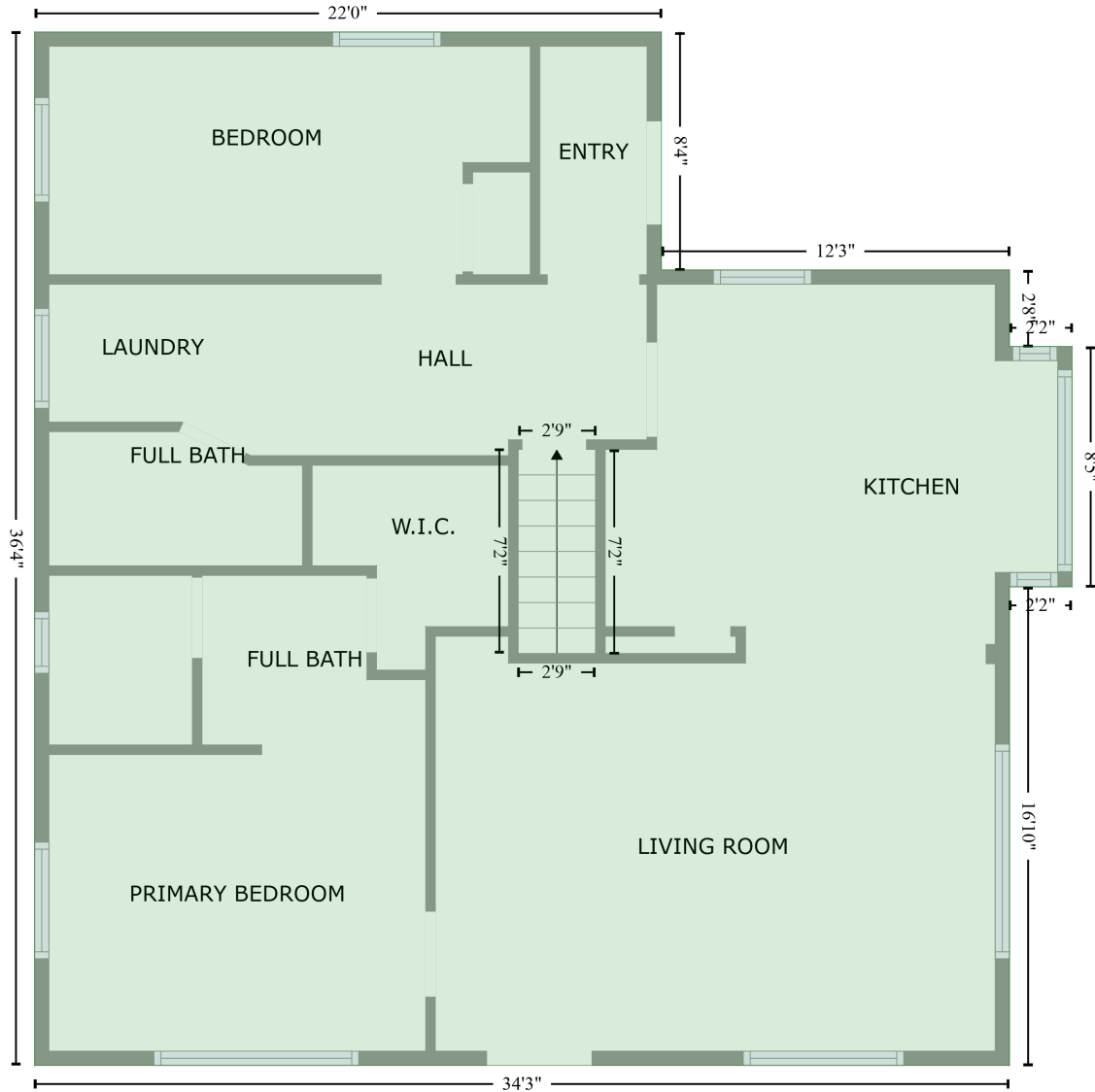
Gross Living Area: 1161 sq. ft

| Space                                | Area (sq. ft) | Calculation <small>Coordinate Polygon Area Algorithm using inches</small>  |
|--------------------------------------|---------------|--|
| ELECTRICAL ROOM<br>(Non-living area) | 228           | $432 + (35.8 + 29.8) * (432 - 432) + (29.8 + 29.8) * (432 - 302.3) + (29.8 + 168.4) * (302.3 - 302.3) * 0.5 * 0.00694$   |
| STORAGE<br>(Non-living area)         | 75            | $-((401 + 401) * (165 - 281.5) + (401 + 311.4) * (281.5 - 281.5) + (311.4 + 311.4) * (281.5 - 339) + (311.4 + 307.4) * (339 - 339) + (307.4 + 307.4) * (339 - 335) + (307.4 + 231.1) * (335 - 335) + (231.1 + 231.1) * (335 - 304.3) + (231.1 + 174.4) * (304.3 - 304.3) + (174.4 + 168.4) * (304.3 - 302.3) + (168.4 + 168.4) * (302.3 - 165) + (168.4 + 401) * (165 - 165)) * 0.5 * 0.00694$ |
| STORAGE<br>(Non-living area)         | 44            | $-((435.1 + 435.1) * (383.8 - 387.8) + (435.1 + 441.1) * (387.8 - 387.8) + (441.1 + 441.1) * (387.8 - 467) + (441.1 + 307.4) * (467 - 467) + (307.4 + 307.4) * (467 - 461) + (307.4 + 311.4) * (461 - 461) + (311.4 + 311.4) * (461 - 383.8) + (311.4 + 435.1) * (383.8 - 383.8)) * 0.5 * 0.00694$   |
| STORAGE<br>(Non-living area)         | 49            | $-((435.1 + 435.1) * (335 - 339) + (435.1 + 441.1) * (339 - 339) + (441.1 + 441.1) * (339 - 387.8) + (441.1 + 435.1) * (387.8 - 387.8) + (435.1 + 435.1) * (387.8 - 383.8) + (435.1 + 311.4) * (383.8 - 383.8) + (311.4 + 311.4) * (383.8 - 339) + (311.4 + 307.4) * (339 - 339) + (307.4 + 307.4) * (339 - 335) + (307.4 + 435.1) * (335 - 335)) * 0.5 * 0.00694$                             |
| STORAGE<br>(Non-living area)         | 49            | $-((441.1 + 441.1) * (277.5 - 339) + (441.1 + 435.1) * (339 - 339) + (435.1 + 435.1) * (339 - 335) + (435.1 + 311.4) * (335 - 335) + (311.4 + 311.4) * (335 - 281.5) + (311.4 + 435.1) * (281.5 - 281.5) + (435.1 + 435.1) * (281.5 - 277.5) + (435.1 + 441.1) * (277.5 - 277.5)) * 0.5 * 0.00694$   |

# 211 S 100 W, Wellsville, UT, US

Gross Living Area: 1161 sq. ft

FLOOR 2  
[AREA: 1161]



| Space                    | Area (sq. ft) | Calculation <small>Coordinate Polygon Area Algorithm using inches</small>  |
|--------------------------|---------------|--|
| FLOOR 2<br>(Living area) | 1161          | $  \begin{aligned}  & -((294.2 + 294.2) * (31 - 131.4) + (294.2 + 441) * (131.4 - 131.4) + (441 + 441) * (131.4 - 163.7) + \\  & (441 + 467.4) * (163.7 - 163.7) + (467.4 + 467.4) * (163.7 - 265.1) + (467.4 + 441) * (265.1 - \\  & 265.1) + (441 + 441) * (265.1 - 467) + (441 + 29.8) * (467 - 467) + (29.8 + 29.8) * (467 - 31) + \\  & (29.8 + 294.2) * (31 - 31)) * 0.5 * 0.00694  \end{aligned}  $ |