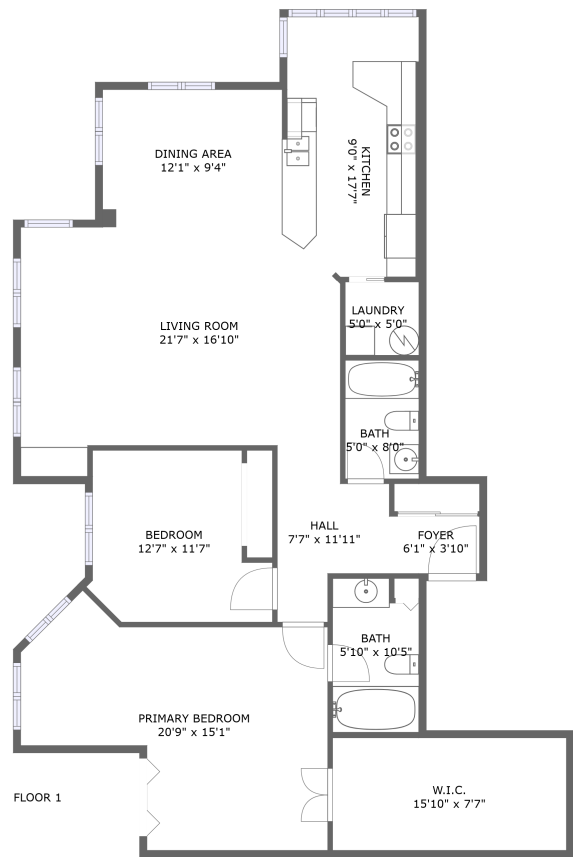


Home report

215 Somerset Street West, Centretown, Ottawa, Ontario,  
Canada, K2P 0J1, 402




Total Area: 1373 sq. ft

Floor 1: 1373 sq. ft

Excluded: Walls: 0 sq. ft

Property summary

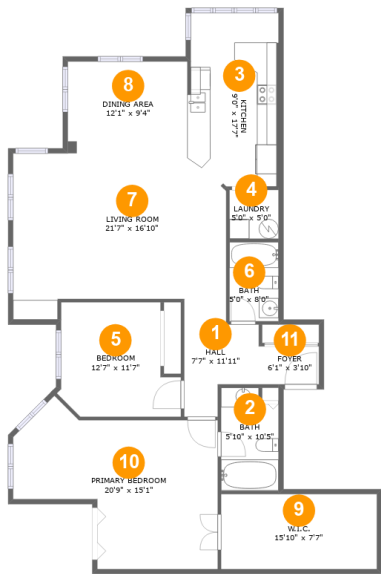
 1 Floors

 2 Bedrooms

 2 Bathrooms

Home report

215 Somerset Street West, Centretown, Ottawa, Ontario,  
Canada, K2P 0J1, 402



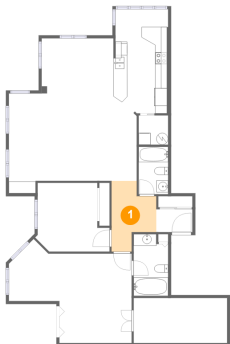
Room dimensions

Floor 1 Total:1373sqft Excluded: 0sqft

#		Max Dimensions	sqft	Included
1	Hall	7'7" x 11'11"	68 sq. ft	Yes
2	Bath	5'10" x 10'5"	58 sq. ft	Yes
3	Kitchen	9'0" x 17'7"	160 sq. ft	Yes
4	Laundry	5'0" x 5'0"	25 sq. ft	Yes
5	Bedroom	12'7" x 11'7"	124 sq. ft	Yes
6	Bath	5'0" x 8'0"	40 sq. ft	Yes
7	Living Room	21'7" x 16'10"	316 sq. ft	Yes
8	Dining Area	12'1" x 9'4"	113 sq. ft	Yes
9	W.I.C.	15'10" x 7'7"	120 sq. ft	Yes
10	Primary Bedroom	20'9" x 15'1"	258 sq. ft	Yes
11	Foyer	6'1" x 3'10"	24 sq. ft	Yes

215 Somerset Street West, Centretown, Ottawa, Ontario,  
Canada, K2P 0J1, 402

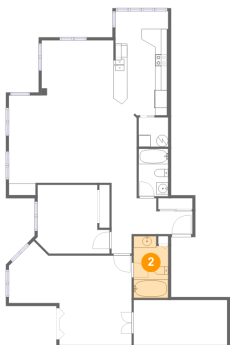
1 Floor 1 - Hall



Max Dimensions: 7'7" x 11'11"  
Calculated Area: 68 sq. ft  
Included: Yes

Heated: Yes  
Finished: Yes  
Enclosed: Yes  
Contiguous: Yes  
Permitted: Yes  
Wet space: No  
Addition: No  
Conversion: No

2 Floor 1 - Bath

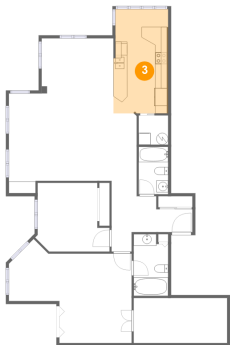


Max Dimensions: 5'10" x 10'5"  
Calculated Area: 58 sq. ft  
Included: Yes

Heated: Yes  
Finished: Yes  
Enclosed: Yes  
Contiguous: Yes  
Permitted: Yes  
Wet space: Yes  
Addition: No  
Conversion: No

215 Somerset Street West, Centretown, Ottawa, Ontario,  
Canada, K2P 0J1, 402

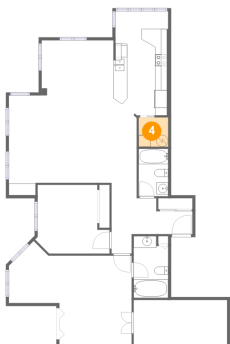
3 Floor 1 - Kitchen



Max Dimensions: 9'0" x 17'7"  
Calculated Area: 160 sq. ft  
Included: Yes

Heated: Yes  
Finished: Yes  
Enclosed: Yes  
Contiguous: Yes  
Permitted: Yes  
Wet space: No  
Addition: No  
Conversion: No

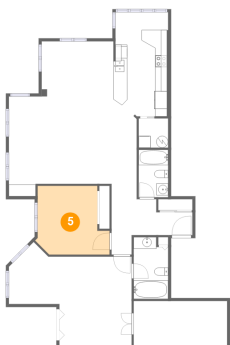
4 Floor 1 - Laundry



Max Dimensions: 5'0" x 5'0"  
Calculated Area: 25 sq. ft  
Included: Yes

Heated: Yes  
Finished: Yes  
Enclosed: Yes  
Contiguous: Yes  
Permitted: Yes  
Wet space: No  
Addition: No  
Conversion: No

5 Floor 1 - Bedroom

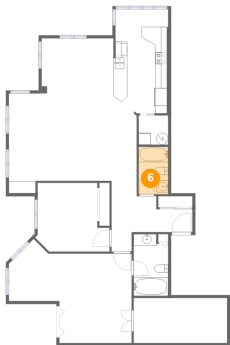


Max Dimensions: 12'7" x 11'7"  
Calculated Area: 124 sq. ft  
Included: Yes

Heated: Yes  
Finished: Yes  
Enclosed: Yes  
Contiguous: Yes  
Permitted: Yes  
Wet space: No  
Addition: No  
Conversion: No

215 Somerset Street West, Centretown, Ottawa, Ontario,  
Canada, K2P 0J1, 402

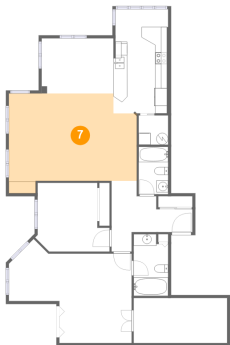
6 Floor 1 - Bath



Max Dimensions: 5'0" x 8'0"  
Calculated Area: 40 sq. ft  
Included: Yes

Heated: Yes  
Finished: Yes  
Enclosed: Yes  
Contiguous: Yes  
Permitted: Yes  
Wet space: Yes  
Addition: No  
Conversion: No

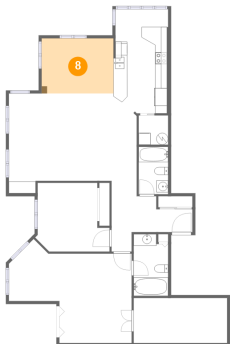
7 Floor 1 - Living Room



Max Dimensions: 21'7" x 16'10"  
Calculated Area: 316 sq. ft  
Included: Yes

Heated: Yes  
Finished: Yes  
Enclosed: Yes  
Contiguous: Yes  
Permitted: Yes  
Wet space: No  
Addition: No  
Conversion: No

8 Floor 1 - Dining Area

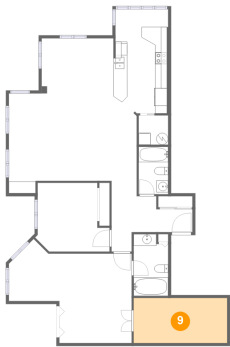


Max Dimensions: 12'1" x 9'4"  
Calculated Area: 113 sq. ft  
Included: Yes

Heated: Yes  
Finished: Yes  
Enclosed: Yes  
Contiguous: Yes  
Permitted: Yes  
Wet space: No  
Addition: No  
Conversion: No

215 Somerset Street West, Centretown, Ottawa, Ontario,  
Canada, K2P 0J1, 402

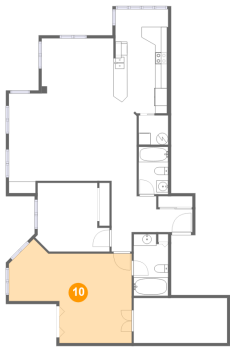
9 Floor 1 - W.I.C.



Max Dimensions: 15'10" x 7'7"  
Calculated Area: 120 sq. ft  
Included: Yes

Heated: Yes  
Finished: Yes  
Enclosed: Yes  
Contiguous: Yes  
Permitted: Yes  
Wet space: No  
Addition: No  
Conversion: No

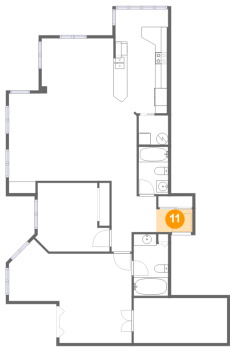
10 Floor 1 - Primary Bedroom



Max Dimensions: 20'9" x 15'1"  
Calculated Area: 258 sq. ft  
Included: Yes

Heated: Yes  
Finished: Yes  
Enclosed: Yes  
Contiguous: Yes  
Permitted: Yes  
Wet space: No  
Addition: No  
Conversion: No

11 Floor 1 - Foyer



Max Dimensions: 6'1" x 3'10"  
Calculated Area: 24 sq. ft  
Included: Yes

Heated: Yes  
Finished: Yes  
Enclosed: Yes  
Contiguous: Yes  
Permitted: Yes  
Wet space: No  
Addition: No  
Conversion: No