

312 Spring Hill Lane, Cornwall, Lebanon County, Pennsylvania, United States, 17042



Property summary

 **1** Garages

 **4** Bedrooms

 **2** Bathrooms

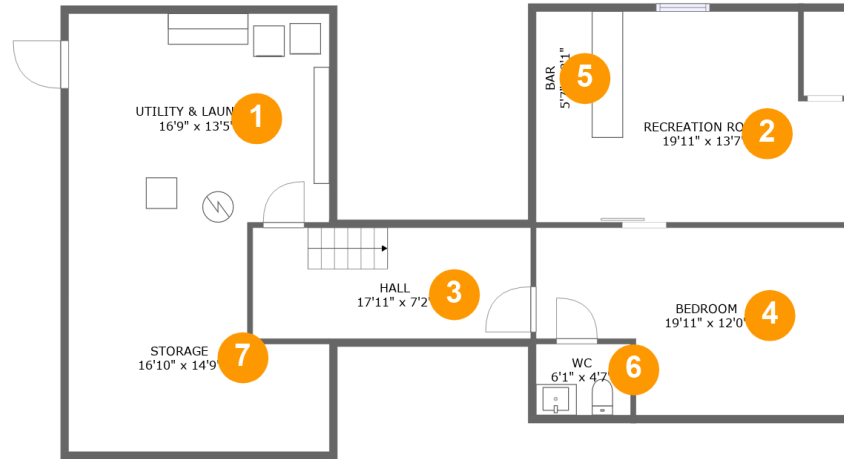
 **1** Half baths

 **3** Floors

 **2,122** Gross living area sqft

 **3,898** Total sqft

312 Spring Hill Lane, Cornwall, Lebanon County, Pennsylvania, United States, 17042



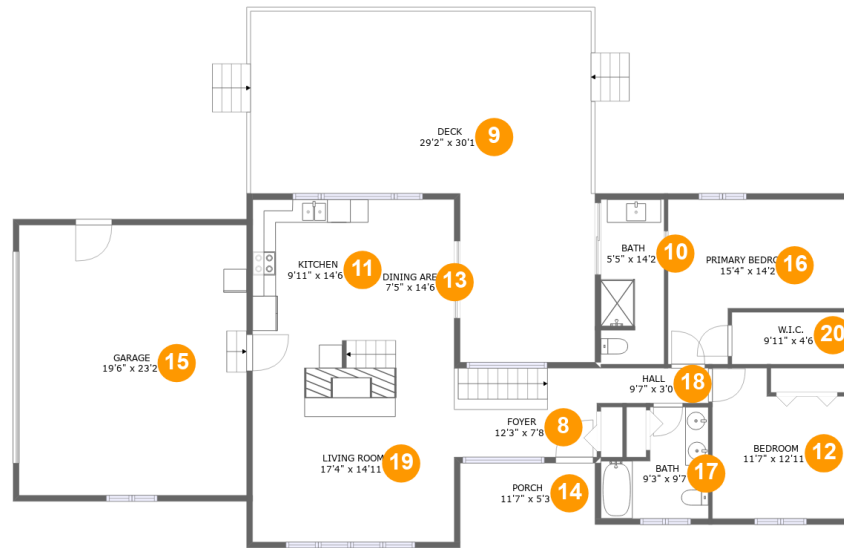
Room dimensions

Floor 1

Total sqft: 1183 Living area: 690

#		Dimensions	sqft	Counted as living area
1	Utility & Laundry	16'9" x 13'5"	226 sq. ft	No
2	Recreation Room	19'11" x 13'7"	207 sq. ft	Yes
3	Hall	17'11" x 7'2"	128 sq. ft	Yes
4	Bedroom	19'11" x 12'0"	208 sq. ft	Yes
5	Bar	5'7" x 8'1"	45 sq. ft	Yes
6	WC	6'1" x 4'7"	28 sq. ft	Yes
7	Storage	16'10" x 14'9"	207 sq. ft	No

312 Spring Hill Lane, Cornwall, Lebanon County, Pennsylvania, United States, 17042



Room dimensions

Floor 2

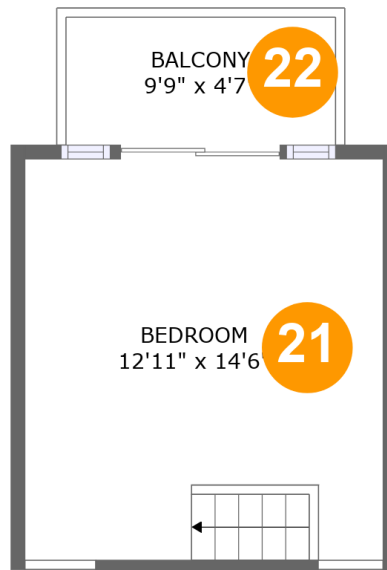
Total sqft: 2456 Living area: 1285

#		Dimensions	sqft	Counted as living area
8	Foyer	12'3" x 7'8"	94 sq. ft	Yes
9	Deck	29'2" x 30'1"	625 sq. ft	No
10	Bath	5'5" x 14'2"	76 sq. ft	Yes
11	Kitchen	9'11" x 14'6"	144 sq. ft	Yes
12	Bedroom	11'7" x 12'11"	133 sq. ft	Yes
13	Dining Area	7'5" x 14'6"	107 sq. ft	Yes
14	Porch	11'7" x 5'3"	61 sq. ft	No
15	Garage	19'6" x 23'2"	453 sq. ft	No
16	Primary Bedroom	15'4" x 14'2"	168 sq. ft	Yes
17	Bath	9'3" x 9'7"	69 sq. ft	Yes
18	Hall	9'7" x 3'0"	29 sq. ft	Yes

**312 Spring Hill Lane, Cornwall, Lebanon County,
Pennsylvania, United States, 17042**

#		Dimensions	sqft	Counted as living area
19	Living Room	17'4" x 14'11"	258 sq. ft	Yes
20	W.I.C.	9'11" x 4'6"	44 sq. ft	Yes

312 Spring Hill Lane, Cornwall, Lebanon County, Pennsylvania, United States, 17042



Room dimensions

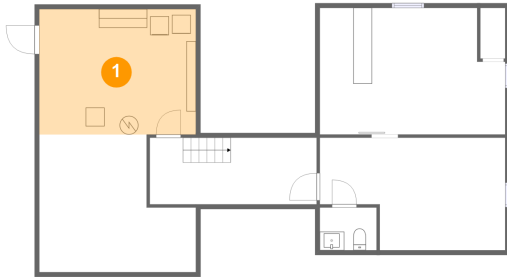
Floor 3

Total sqft: 259 Living area: 147

#		Dimensions	sqft	Counted as living area
21	Bedroom	12'11" x 14'6"	138 sq. ft	Yes
22	Balcony	9'9" x 4'7"	45 sq. ft	No

312 Spring Hill Lane, Cornwall, Lebanon County, Pennsylvania, United States, 17042

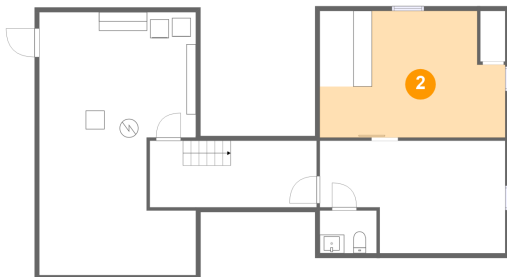
1 Floor 1 - Utility & Laundry



Dimensions: 16'9" x 13'5"
Area: 226 sq. ft
Counted as living area: No

Heated: Yes
Finished: No
Enclosed: Yes
Contiguous: Yes
Permitted: Yes
Wet space: No
Addition: No
Conversion: No

2 Floor 1 - Recreation Room

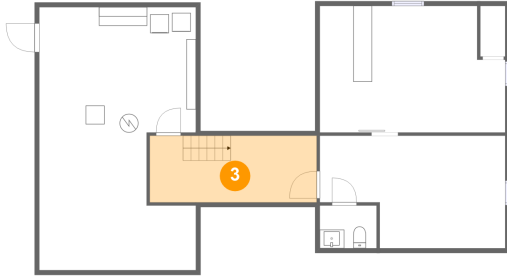


Dimensions: 19'11" x 13'7"
Area: 207 sq. ft
Counted as living area: Yes

Heated: Yes
Finished: Yes
Enclosed: Yes
Contiguous: Yes
Permitted: Yes
Wet space: No
Addition: No
Conversion: No

312 Spring Hill Lane, Cornwall, Lebanon County, Pennsylvania, United States, 17042

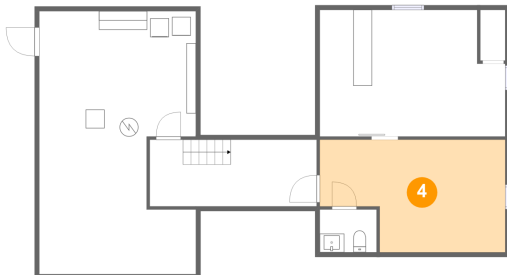
3 Floor 1 - Hall



Dimensions: 17'11" x 7'2"
Area: 128 sq. ft
Counted as living area: Yes

Heated: Yes
Finished: Yes
Enclosed: Yes
Contiguous: Yes
Permitted: Yes
Wet space: No
Addition: No
Conversion: No

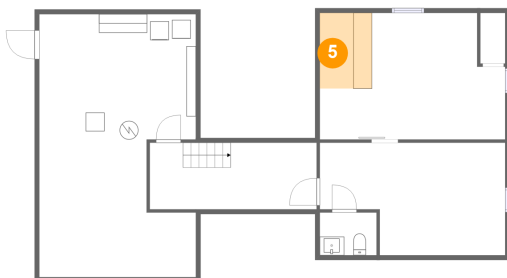
4 Floor 1 - Bedroom



Dimensions: 19'11" x 12'0"
Area: 208 sq. ft
Counted as living area: Yes

Heated: Yes
Finished: Yes
Enclosed: Yes
Contiguous: Yes
Permitted: Yes
Wet space: No
Addition: No
Conversion: No

5 Floor 1 - Bar

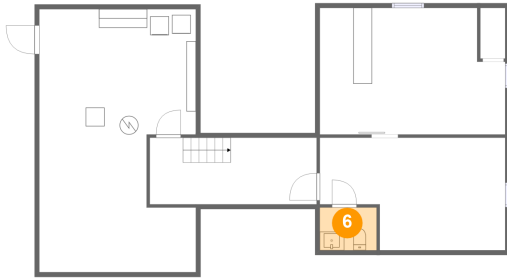


Dimensions: 5'7" x 8'1"
Area: 45 sq. ft
Counted as living area: Yes

Heated: Yes
Finished: Yes
Enclosed: Yes
Contiguous: Yes
Permitted: Yes
Wet space: No
Addition: No
Conversion: No

312 Spring Hill Lane, Cornwall, Lebanon County, Pennsylvania, United States, 17042

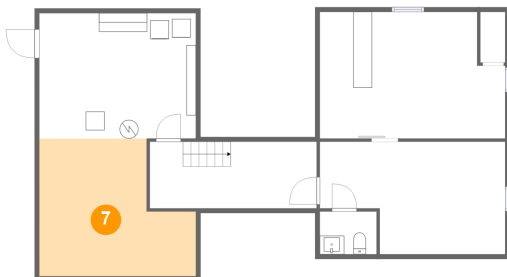
6 Floor 1 - WC



Dimensions: 6'1" x 4'7"
Area: 28 sq. ft
Counted as living area: Yes

Heated: Yes
Finished: Yes
Enclosed: Yes
Contiguous: Yes
Permitted: Yes
Wet space: Yes
Addition: No
Conversion: No

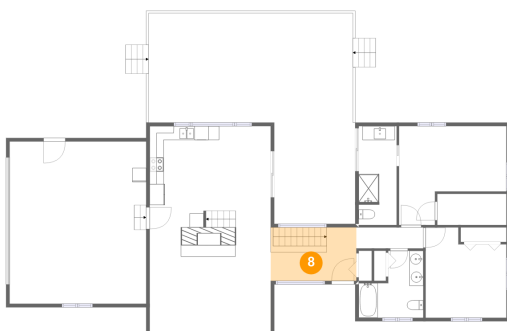
7 Floor 1 - Storage



Dimensions: 16'10" x 14'9"
Area: 207 sq. ft
Counted as living area: No

Heated: No
Finished: No
Enclosed: No
Contiguous: Yes
Permitted: Yes
Wet space: No
Addition: No
Conversion: No

8 Floor 2 - Foyer



Dimensions: 12'3" x 7'8"
Area: 94 sq. ft
Counted as living area: Yes

Heated: Yes
Finished: Yes
Enclosed: Yes
Contiguous: Yes
Permitted: Yes
Wet space: No
Addition: No
Conversion: No

312 Spring Hill Lane, Cornwall, Lebanon County, Pennsylvania, United States, 17042

9 Floor 2 - Deck



Dimensions: 29'2" x 30'1"
Area: 625 sq. ft
Counted as living area: No

Heated: No
Finished: Yes
Enclosed: No
Contiguous: Yes
Permitted: Yes
Wet space: No
Addition: No
Conversion: No

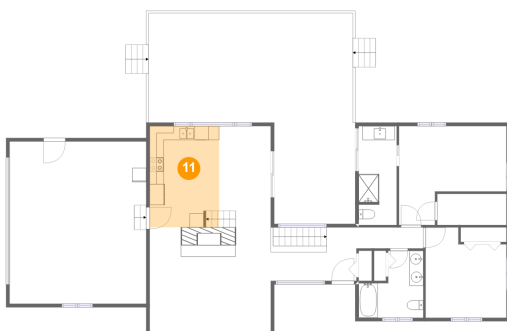
10 Floor 2 - Bath



Dimensions: 5'5" x 14'2"
Area: 76 sq. ft
Counted as living area: Yes

Heated: Yes
Finished: Yes
Enclosed: Yes
Contiguous: Yes
Permitted: Yes
Wet space: Yes
Addition: No
Conversion: No

11 Floor 2 - Kitchen



Dimensions: 9'11" x 14'6"
Area: 144 sq. ft
Counted as living area: Yes

Heated: Yes
Finished: Yes
Enclosed: Yes
Contiguous: Yes
Permitted: Yes
Wet space: No
Addition: No
Conversion: No

312 Spring Hill Lane, Cornwall, Lebanon County, Pennsylvania, United States, 17042

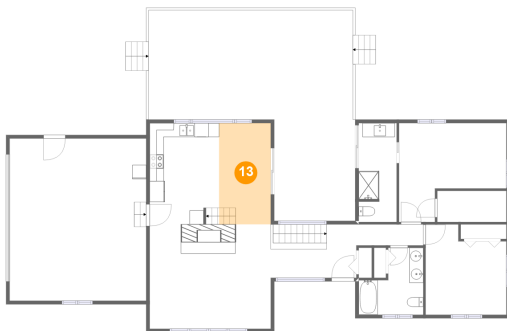
12 Floor 2 - Bedroom



Dimensions: 11'7" x 12'11"
Area: 133 sq. ft
Counted as living area: Yes

Heated: Yes
Finished: Yes
Enclosed: Yes
Contiguous: Yes
Permitted: Yes
Wet space: No
Addition: No
Conversion: No

13 Floor 2 - Dining Area



Dimensions: 7'5" x 14'6"
Area: 107 sq. ft
Counted as living area: Yes

Heated: Yes
Finished: Yes
Enclosed: Yes
Contiguous: Yes
Permitted: Yes
Wet space: No
Addition: No
Conversion: No

14 Floor 2 - Porch



Dimensions: 11'7" x 5'3"
Area: 61 sq. ft
Counted as living area: No

Heated: No
Finished: Yes
Enclosed: No
Contiguous: Yes
Permitted: Yes
Wet space: No
Addition: No
Conversion: No

312 Spring Hill Lane, Cornwall, Lebanon County, Pennsylvania, United States, 17042

15 Floor 2 - Garage



Dimensions: 19'6" x 23'2"
Area: 453 sq. ft
Counted as living area: No

Heated: No
Finished: No
Enclosed: Yes
Contiguous: Yes
Permitted: Yes
Wet space: No
Addition: No
Conversion: No

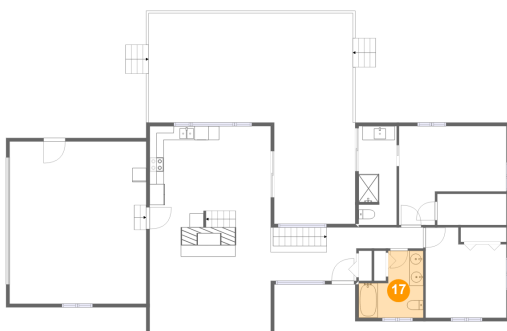
16 Floor 2 - Primary Bedroom



Dimensions: 15'4" x 14'2"
Area: 168 sq. ft
Counted as living area: Yes

Heated: Yes
Finished: Yes
Enclosed: Yes
Contiguous: Yes
Permitted: Yes
Wet space: No
Addition: No
Conversion: No

17 Floor 2 - Bath

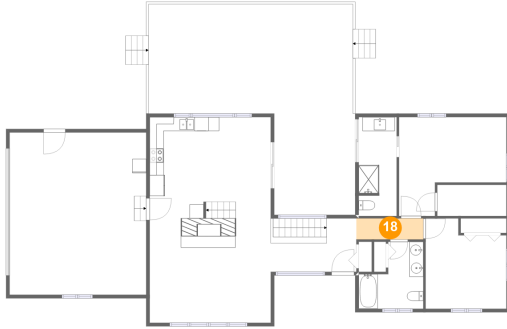


Dimensions: 9'3" x 9'7"
Area: 69 sq. ft
Counted as living area: Yes

Heated: Yes
Finished: Yes
Enclosed: Yes
Contiguous: Yes
Permitted: Yes
Wet space: Yes
Addition: No
Conversion: No

**312 Spring Hill Lane, Cornwall, Lebanon County,
Pennsylvania, United States, 17042**

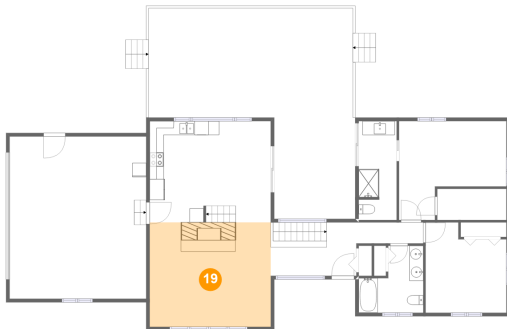
18 Floor 2 - Hall



Dimensions: 9'7" x 3'0"
Area: 29 sq. ft
Counted as living area: Yes

Heated: Yes
Finished: Yes
Enclosed: Yes
Contiguous: Yes
Permitted: Yes
Wet space: No
Addition: No
Conversion: No

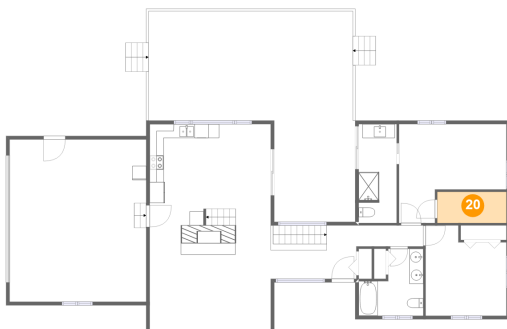
19 Floor 2 - Living Room



Dimensions: 17'4" x 14'11"
Area: 258 sq. ft
Counted as living area: Yes

Heated: Yes
Finished: Yes
Enclosed: Yes
Contiguous: Yes
Permitted: Yes
Wet space: No
Addition: No
Conversion: No

20 Floor 2 - W.I.C.

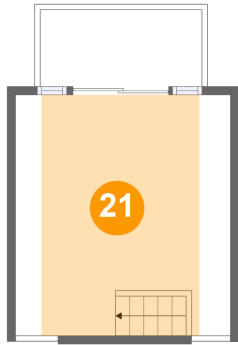


Dimensions: 9'11" x 4'6"
Area: 44 sq. ft
Counted as living area: Yes

Heated: Yes
Finished: Yes
Enclosed: Yes
Contiguous: Yes
Permitted: Yes
Wet space: No
Addition: No
Conversion: No

**312 Spring Hill Lane, Cornwall, Lebanon County,
Pennsylvania, United States, 17042**

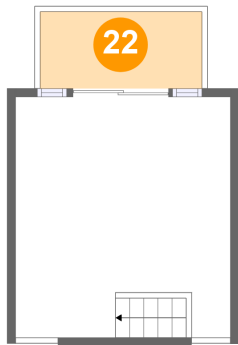
21 Floor 3 - Bedroom



Dimensions: 12'11" x 14'6"
Area: 138 sq. ft
Counted as living area: Yes

Heated: Yes
Finished: Yes
Enclosed: Yes
Contiguous: Yes
Permitted: Yes
Wet space: No
Addition: No
Conversion: No

22 Floor 3 - Balcony



Dimensions: 9'9" x 4'7"
Area: 45 sq. ft
Counted as living area: No

Heated: No
Finished: Yes
Enclosed: No
Contiguous: Yes
Permitted: Yes
Wet space: No
Addition: No
Conversion: No