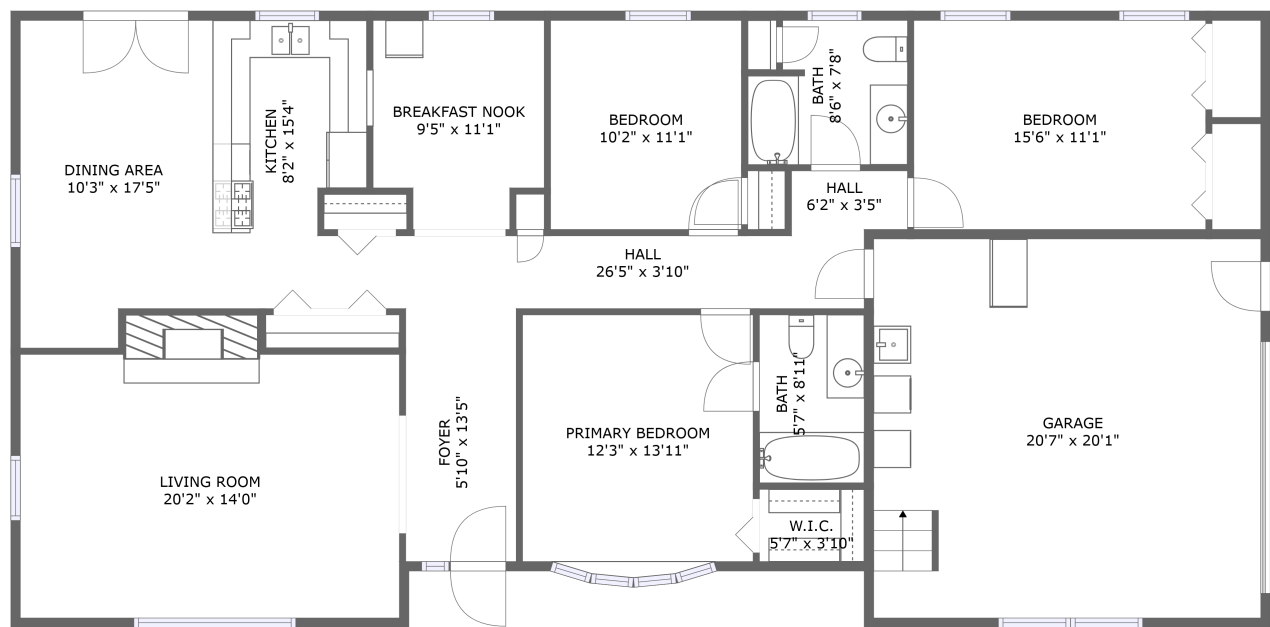


Home report

128 Ramsey Road, Manchester, Coffee County, Tennessee,
United States, 37355, 128 Ramsey Rd, Manchester, TN



FLOOR 1

Property summary

 **1** Garages

 **3** Bedrooms

 **2** Bathrooms

 **0** Half baths

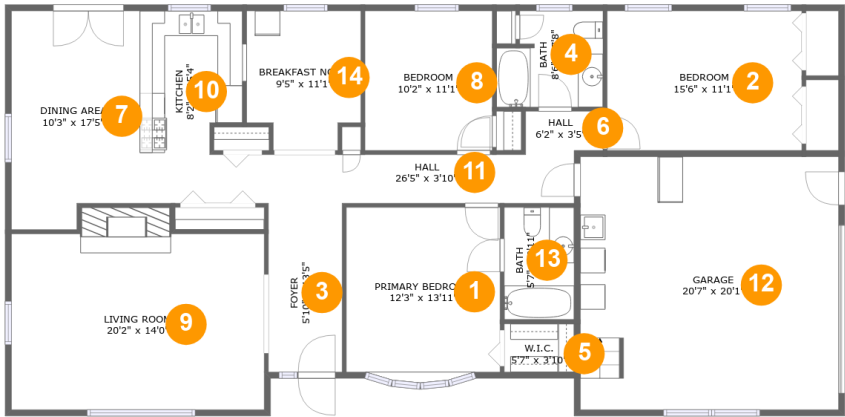
 **1** Floors

 **1,687** Gross living area sqft

 **2,124** Total sqft

Home report

128 Ramsey Road, Manchester, Coffee County, Tennessee,
United States, 37355, 128 Ramsey Rd, Manchester, TN



Room dimensions

Floor 1 Total sqft: 2124 Living area: 1687

#		Dimensions	sqft	Counted as living area
1	Primary Bedroom	12'3" x 13'11"	165 sq. ft	Yes
2	Bedroom	15'6" x 11'1"	172 sq. ft	Yes
3	Foyer	5'10" x 13'5"	79 sq. ft	Yes
4	Bath	8'6" x 7'8"	59 sq. ft	Yes
5	W.I.C.	5'7" x 3'10"	21 sq. ft	Yes
6	Hall	6'2" x 3'5"	21 sq. ft	Yes
7	Dining Area	10'3" x 17'5"	168 sq. ft	Yes
8	Bedroom	10'2" x 11'1"	113 sq. ft	Yes
9	Living Room	20'2" x 14'0"	297 sq. ft	Yes
10	Kitchen	8'2" x 15'4"	119 sq. ft	Yes
11	Hall	26'5" x 3'10"	102 sq. ft	Yes

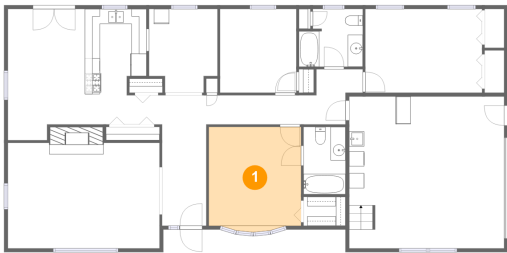
Home report

128 Ramsey Road, Manchester, Coffee County, Tennessee,
United States, 37355, 128 Ramsey Rd, Manchester, TN

#		Dimensions	sqft	Counted as living area
12	Garage	20'7" x 20'1"	414 sq. ft	No
13	Bath	5'7" x 8'11"	50 sq. ft	Yes
14	Breakfast Nook	9'5" x 11'1"	93 sq. ft	Yes

128 Ramsey Road, Manchester, Coffee County, Tennessee,
United States, 37355, 128 Ramsey Rd, Manchester, TN

1 Floor 1 - Primary Bedroom



Dimensions: 12'3" x 13'11"
Area: 165 sq. ft
Counted as living area: Yes

Heated: Yes
Finished: Yes
Enclosed: Yes
Contiguous: Yes
Permitted: Yes
Wet space: No
Addition: No
Conversion: No

2 Floor 1 - Bedroom



Dimensions: 15'6" x 11'1"
Area: 172 sq. ft
Counted as living area: Yes

Heated: Yes
Finished: Yes
Enclosed: Yes
Contiguous: Yes
Permitted: Yes
Wet space: No
Addition: No
Conversion: No

Home report

128 Ramsey Road, Manchester, Coffee County, Tennessee,
United States, 37355, 128 Ramsey Rd, Manchester, TN

3 Floor 1 - Foyer



Dimensions: 5'10" x 13'5"
Area: 79 sq. ft
Counted as living area: Yes

Heated: Yes
Finished: Yes
Enclosed: Yes
Contiguous: Yes
Permitted: Yes
Wet space: No
Addition: No
Conversion: No

4 Floor 1 - Bath



Dimensions: 8'6" x 7'8"
Area: 59 sq. ft
Counted as living area: Yes

Heated: Yes
Finished: Yes
Enclosed: Yes
Contiguous: Yes
Permitted: Yes
Wet space: Yes
Addition: No
Conversion: No

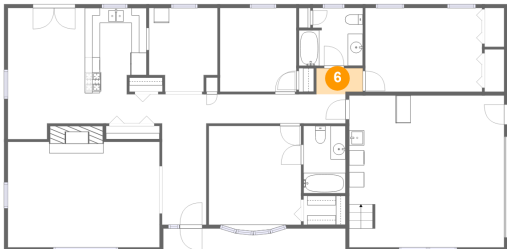
5 Floor 1 - W.I.C.



Dimensions: 5'7" x 3'10"
Area: 21 sq. ft
Counted as living area: Yes

Heated: Yes
Finished: Yes
Enclosed: Yes
Contiguous: Yes
Permitted: Yes
Wet space: No
Addition: No
Conversion: No

6 Floor 1 - Hall



Dimensions: 6'2" x 3'5"
Area: 21 sq. ft
Counted as living area: Yes

Heated: Yes
Finished: Yes
Enclosed: Yes
Contiguous: Yes
Permitted: Yes
Wet space: No
Addition: No
Conversion: No

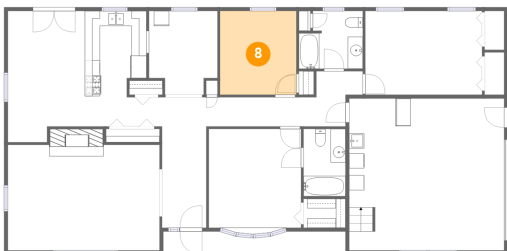
7 Floor 1 - Dining Area



Dimensions: 10'3" x 17'5"
Area: 168 sq. ft
Counted as living area: Yes

Heated: Yes
Finished: Yes
Enclosed: Yes
Contiguous: Yes
Permitted: Yes
Wet space: No
Addition: No
Conversion: No

8 Floor 1 - Bedroom



Dimensions: 10'2" x 11'1"
Area: 113 sq. ft
Counted as living area: Yes

Heated: Yes
Finished: Yes
Enclosed: Yes
Contiguous: Yes
Permitted: Yes
Wet space: No
Addition: No
Conversion: No

Home report

128 Ramsey Road, Manchester, Coffee County, Tennessee,
United States, 37355, 128 Ramsey Rd, Manchester, TN

9 Floor 1 - Living Room



Dimensions: 20'2" x 14'0"
Area: 297 sq. ft
Counted as living area: Yes

Heated: Yes
Finished: Yes
Enclosed: Yes
Contiguous: Yes
Permitted: Yes
Wet space: No
Addition: No
Conversion: No

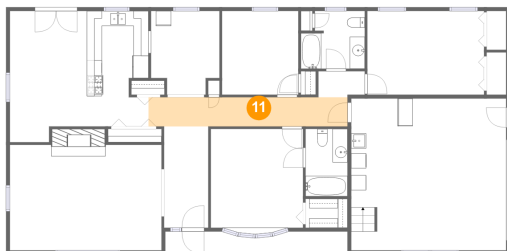
10 Floor 1 - Kitchen



Dimensions: 8'2" x 15'4"
Area: 119 sq. ft
Counted as living area: Yes

Heated: Yes
Finished: Yes
Enclosed: Yes
Contiguous: Yes
Permitted: Yes
Wet space: No
Addition: No
Conversion: No

11 Floor 1 - Hall



Dimensions: 26'5" x 3'10"
Area: 102 sq. ft
Counted as living area: Yes

Heated: Yes
Finished: Yes
Enclosed: Yes
Contiguous: Yes
Permitted: Yes
Wet space: No
Addition: No
Conversion: No

Home report

128 Ramsey Road, Manchester, Coffee County, Tennessee,
United States, 37355, 128 Ramsey Rd, Manchester, TN

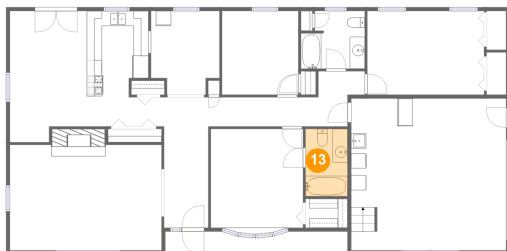
12 Floor 1 - Garage



Dimensions: 20'7" x 20'1"
Area: 414 sq. ft
Counted as living area: No

Heated: No
Finished: No
Enclosed: Yes
Contiguous: Yes
Permitted: Yes
Wet space: No
Addition: No
Conversion: No

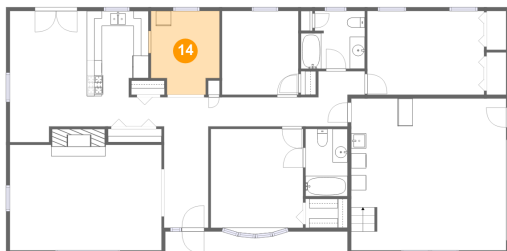
13 Floor 1 - Bath



Dimensions: 5'7" x 8'11"
Area: 50 sq. ft
Counted as living area: Yes

Heated: Yes
Finished: Yes
Enclosed: Yes
Contiguous: Yes
Permitted: Yes
Wet space: Yes
Addition: No
Conversion: No

14 Floor 1 - Breakfast Nook



Dimensions: 9'5" x 11'1"
Area: 93 sq. ft
Counted as living area: Yes

Heated: Yes
Finished: Yes
Enclosed: Yes
Contiguous: Yes
Permitted: Yes
Wet space: No
Addition: No
Conversion: No