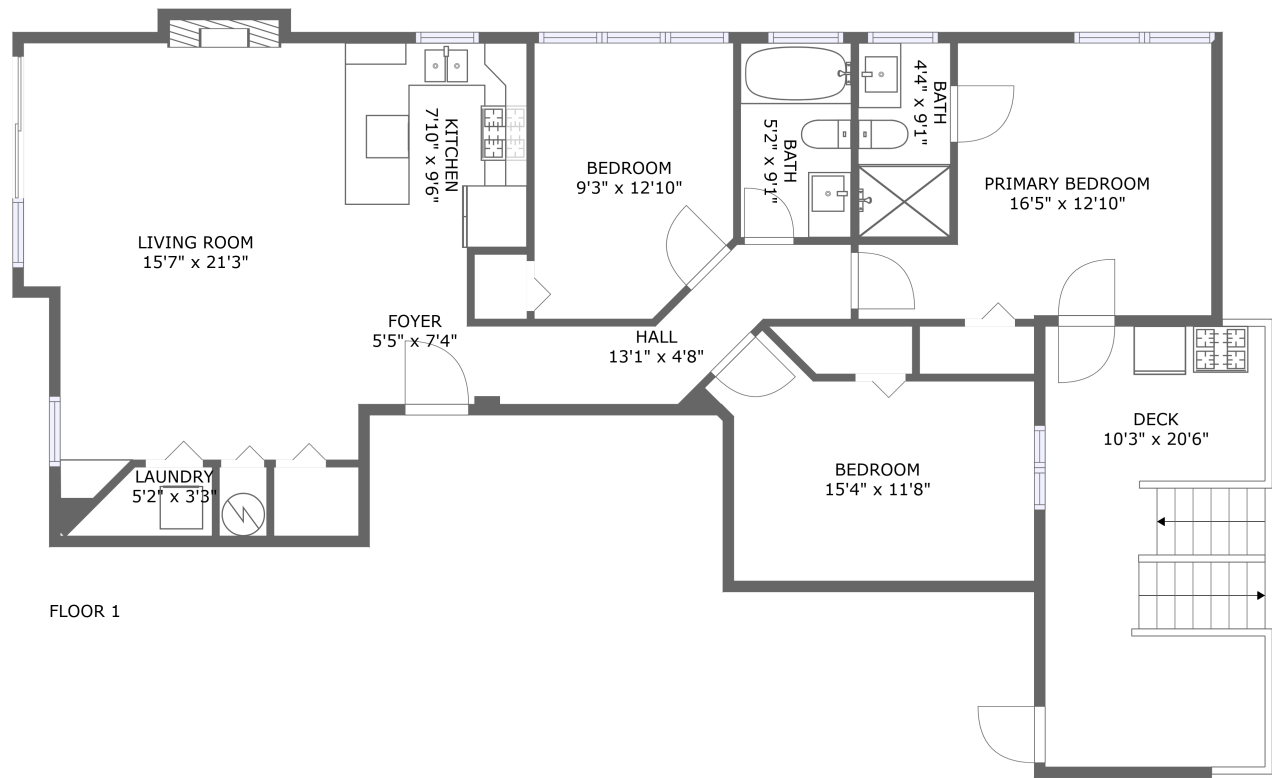


Home report

2601 West Haddon Avenue, Humboldt Park, Chicago, Cook County, Illinois, United States, 60622



FLOOR 1


Total Area: 1092 sq. ft


Floor 1: 1092 sq. ft

Excluded: Deck 210 sq. ft, Fireplace 7 sq. ft, Walls: 0 sq. ft

Property summary

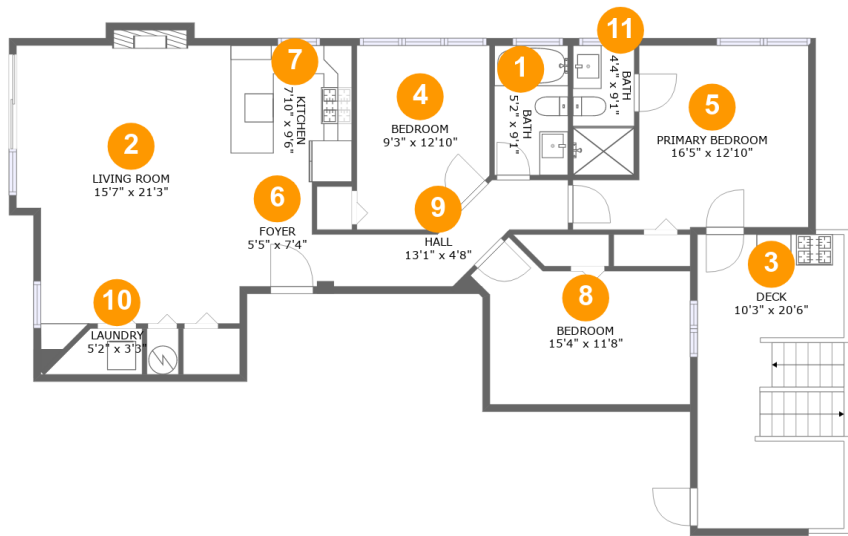
 1 Floors

 3 Bedrooms

 2 Bathrooms

Home report

2601 West Haddon Avenue, Humboldt Park, Chicago, Cook County, Illinois, United States, 60622



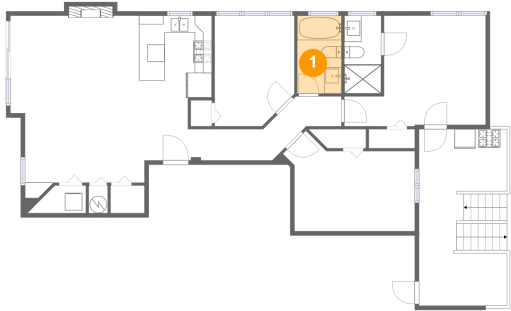
Room dimensions

Floor 1 Total:1092sqft    Excluded: 217sqft

| #  |                 | Max Dimensions | sqft       | Included |
|----|-----------------|----------------|------------|----------|
| 1  | Bath            | 5'2" x 9'1"    | 47 sq. ft  | Yes      |
| 2  | Living Room     | 15'7" x 21'3"  | 301 sq. ft | Yes      |
| 3  | Deck            | 10'3" x 20'6"  | 210 sq. ft | No       |
| 4  | Bedroom         | 9'3" x 12'10"  | 112 sq. ft | Yes      |
| 5  | Primary Bedroom | 16'5" x 12'10" | 167 sq. ft | Yes      |
| 6  | Foyer           | 5'5" x 7'4"    | 38 sq. ft  | Yes      |
| 7  | Kitchen         | 7'10" x 9'6"   | 75 sq. ft  | Yes      |
| 8  | Bedroom         | 15'4" x 11'8"  | 138 sq. ft | Yes      |
| 9  | Hall            | 13'1" x 4'8"   | 67 sq. ft  | Yes      |
| 10 | Laundry         | 5'2" x 3'3"    | 17 sq. ft  | Yes      |
| 11 | Bath            | 4'4" x 9'1"    | 39 sq. ft  | Yes      |

2601 West Haddon Avenue, Humboldt Park, Chicago, Cook County, Illinois, United States, 60622

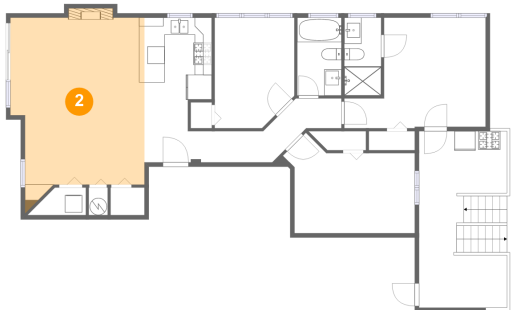
1 Floor 1 - Bath



Max Dimensions: 5'2" x 9'1"  
Calculated Area: 47 sq. ft  
Included: Yes

Heated: Yes  
Finished: Yes  
Enclosed: Yes  
Contiguous: Yes  
Permitted: Yes  
Wet space: Yes  
Addition: No  
Conversion: No

2 Floor 1 - Living Room

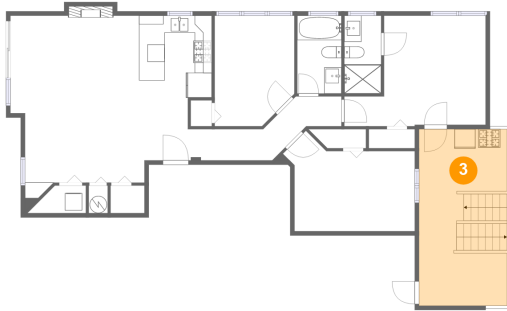


Max Dimensions: 15'7" x 21'3"  
Calculated Area: 301 sq. ft  
Included: Yes

Heated: Yes  
Finished: Yes  
Enclosed: Yes  
Contiguous: Yes  
Permitted: Yes  
Wet space: No  
Addition: No  
Conversion: No

2601 West Haddon Avenue, Humboldt Park, Chicago, Cook  
County, Illinois, United States, 60622

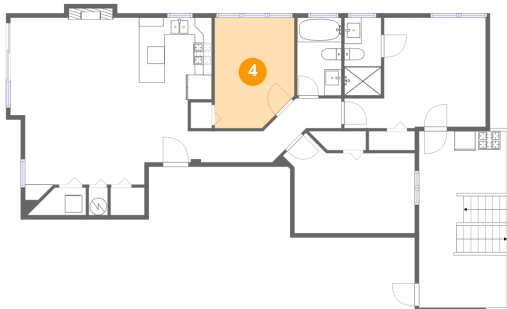
### 3 Floor 1 - Deck



Max Dimensions: 10'3" x  
20'6"  
Calculated Area: 210 sq. ft  
Included: No

Heated: No  
Finished: Yes  
Enclosed: No  
Contiguous:  
Yes  
Permitted: Yes  
Wet space: No  
Addition: No  
Conversion: No

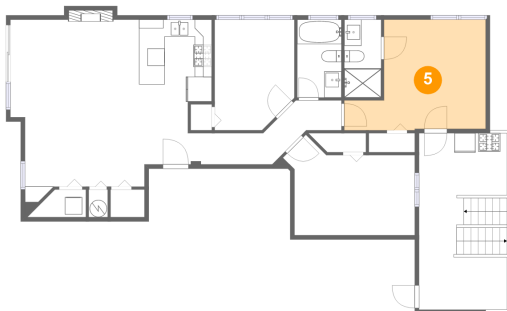
### 4 Floor 1 - Bedroom



Max Dimensions: 9'3" x  
12'10"  
Calculated Area: 112 sq. ft  
Included: Yes

Heated: Yes  
Finished: Yes  
Enclosed: Yes  
Contiguous:  
Yes  
Permitted: Yes  
Wet space: No  
Addition: No  
Conversion: No

### 5 Floor 1 - Primary Bedroom



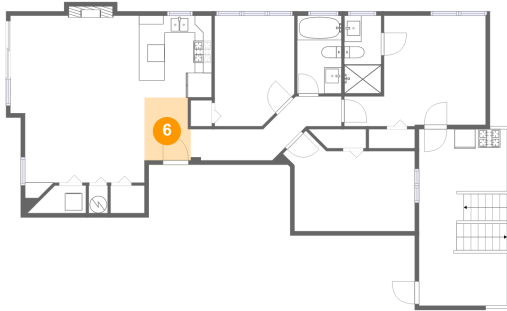
Max Dimensions: 16'5" x  
12'10"  
Calculated Area: 167 sq. ft  
Included: Yes

Heated: Yes  
Finished: Yes  
Enclosed: Yes  
Contiguous:  
Yes  
Permitted: Yes  
Wet space: No  
Addition: No  
Conversion: No

## Home report

2601 West Haddon Avenue, Humboldt Park, Chicago, Cook County, Illinois, United States, 60622

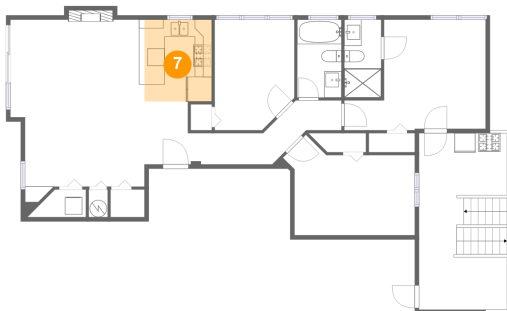
### 6 Floor 1 - Foyer



Max Dimensions: 5'5" x 7'4"  
Calculated Area: 38 sq. ft  
Included: Yes

Heated: Yes  
Finished: Yes  
Enclosed: Yes  
Contiguous: Yes  
Permitted: Yes  
Wet space: No  
Addition: No  
Conversion: No

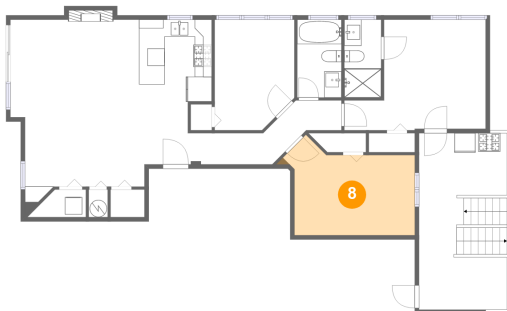
### 7 Floor 1 - Kitchen



Max Dimensions: 7'10" x 9'6"  
Calculated Area: 75 sq. ft  
Included: Yes

Heated: Yes  
Finished: Yes  
Enclosed: Yes  
Contiguous: Yes  
Permitted: Yes  
Wet space: No  
Addition: No  
Conversion: No

### 8 Floor 1 - Bedroom



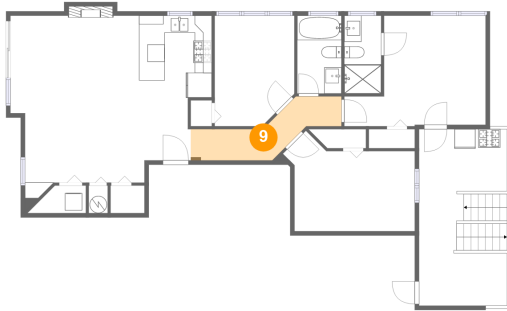
Max Dimensions: 15'4" x 11'8"  
Calculated Area: 138 sq. ft  
Included: Yes

Heated: Yes  
Finished: Yes  
Enclosed: Yes  
Contiguous: Yes  
Permitted: Yes  
Wet space: No  
Addition: No  
Conversion: No

## Home report

2601 West Haddon Avenue, Humboldt Park, Chicago, Cook County, Illinois, United States, 60622

### 9 Floor 1 - Hall



Max Dimensions: 13'1" x 4'8"  
Calculated Area: 67 sq. ft  
Included: Yes

Heated: Yes  
Finished: Yes  
Enclosed: Yes  
Contiguous: Yes  
Permitted: Yes  
Wet space: No  
Addition: No  
Conversion: No

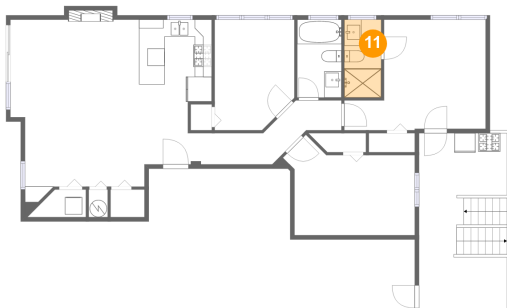
### 10 Floor 1 - Laundry



Max Dimensions: 5'2" x 3'3"  
Calculated Area: 17 sq. ft  
Included: Yes

Heated: Yes  
Finished: Yes  
Enclosed: Yes  
Contiguous: Yes  
Permitted: Yes  
Wet space: No  
Addition: No  
Conversion: No

### 11 Floor 1 - Bath



Max Dimensions: 4'4" x 9'1"  
Calculated Area: 39 sq. ft  
Included: Yes

Heated: Yes  
Finished: Yes  
Enclosed: Yes  
Contiguous: Yes  
Permitted: Yes  
Wet space: Yes  
Addition: No  
Conversion: No