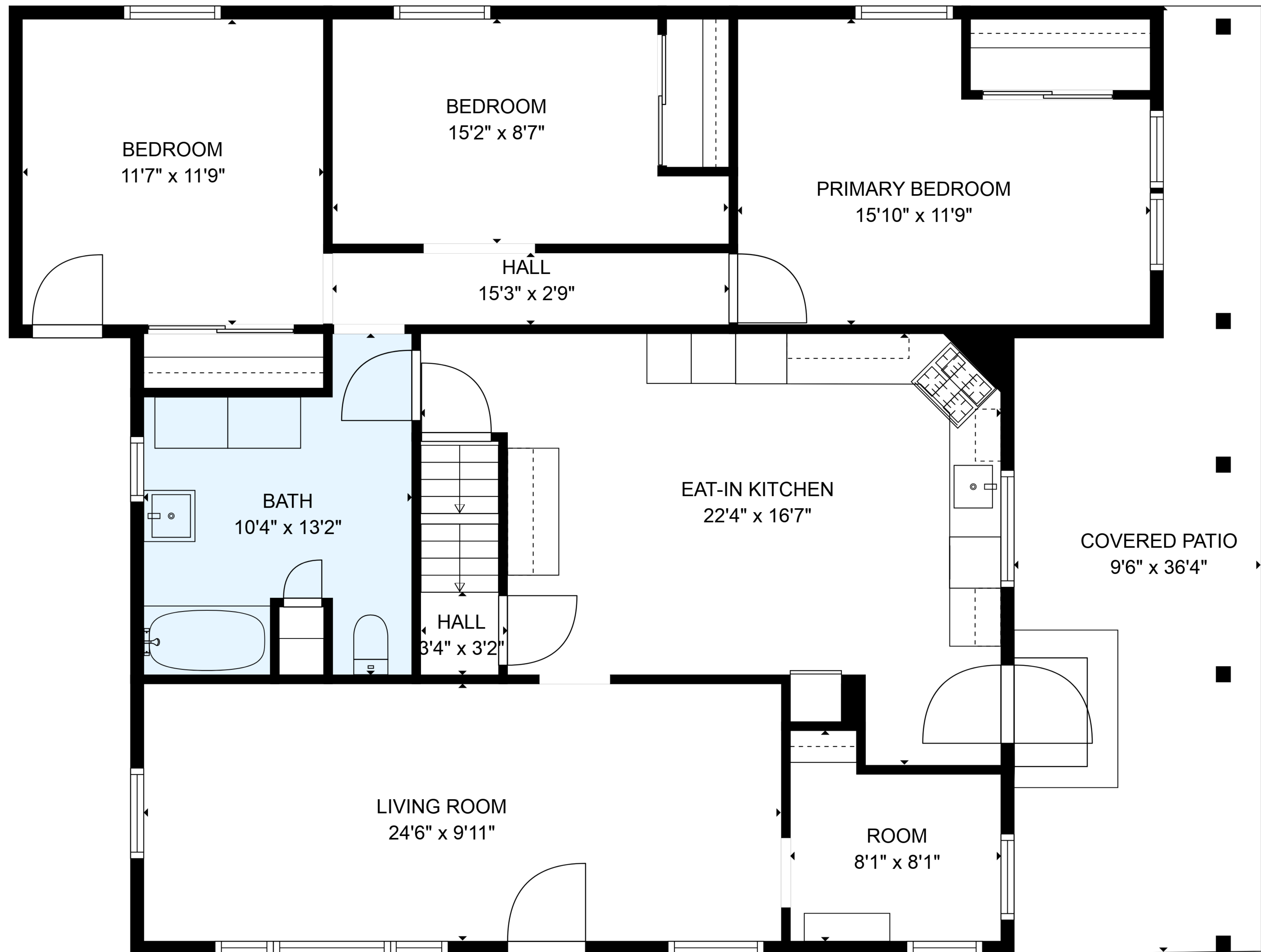


TOTAL: 1291 sq. ft
BELOW GROUND: 0 sq. ft, FLOOR 2: 1291 sq. ft, FLOOR 3: 0 sq. ft
EXCLUDED AREAS: BASEMENT: 655 sq. ft, STORAGE: 110 sq. ft, COVERED PATIO: 273 sq. ft,
LOW CEILING: 247 sq. ft, ATTIC: 282 sq. ft
WALLS: 186 sq. ft

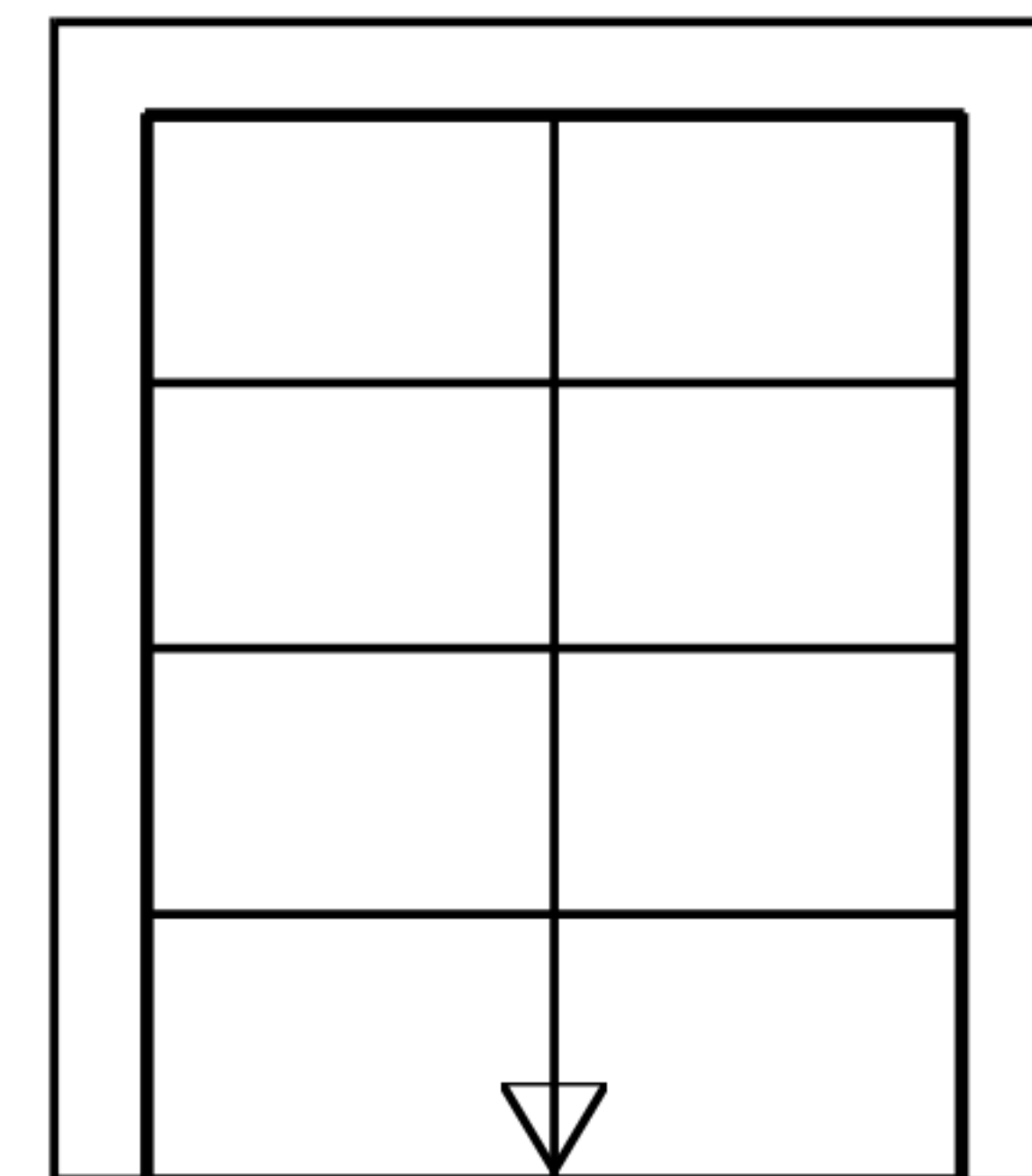
MEASUREMENTS ARE DEEMED RELIABLE BUT ARE NOT GUARANTEED.



TOTAL: 1291 sq. ft

BELOW GROUND: 0 sq. ft, FLOOR 2: 1291 sq. ft, FLOOR 3: 0 sq. ft
EXCLUDED AREAS: BASEMENT: 655 sq. ft, STORAGE: 110 sq. ft, COVERED PATIO: 273 sq. ft,
LOW CEILING: 247 sq. ft, ATTIC: 282 sq. ft
WALLS: 186 sq. ft

MEASUREMENTS ARE DEEMED RELIABLE BUT ARE NOT GUARANTEED.

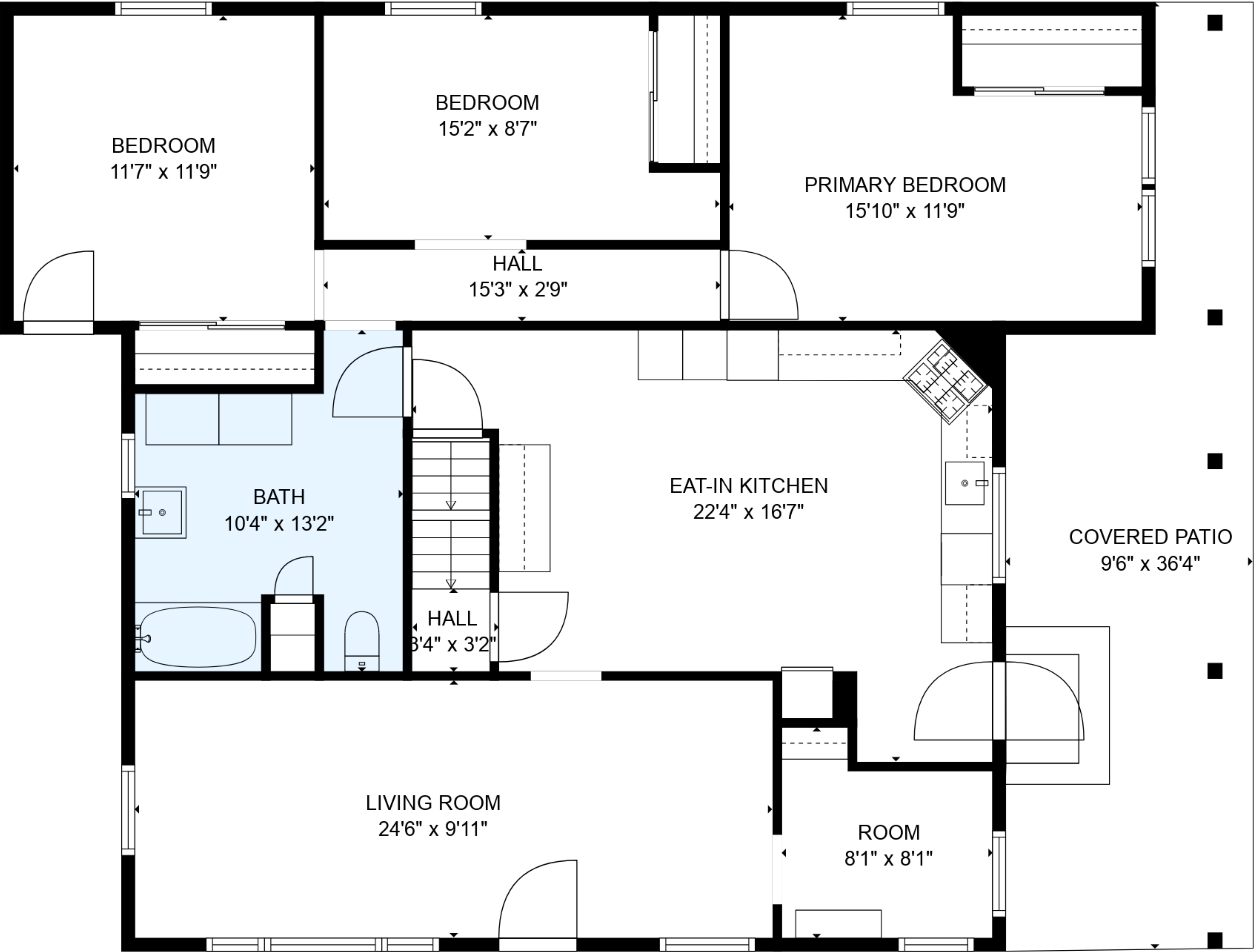


ATTIC
33'0" x 16'0"

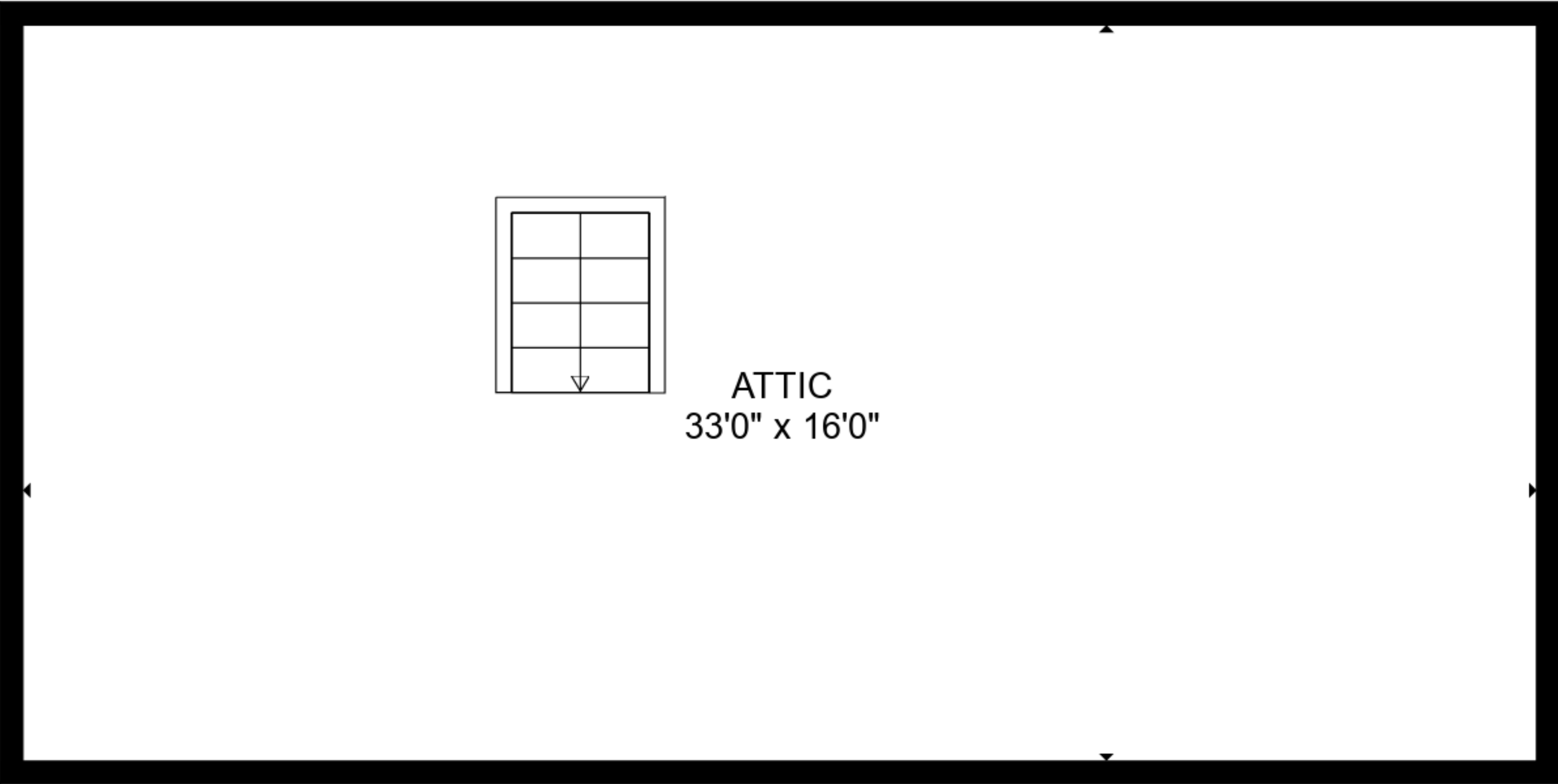
TOTAL: 1291 sq. ft

BELOW GROUND: 0 sq. ft, FLOOR 2: 1291 sq. ft, FLOOR 3: 0 sq. ft
EXCLUDED AREAS: BASEMENT: 655 sq. ft, STORAGE: 110 sq. ft, COVERED PATIO: 273 sq. ft,
LOW CEILING: 247 sq. ft, ATTIC: 282 sq. ft
WALLS: 186 sq. ft

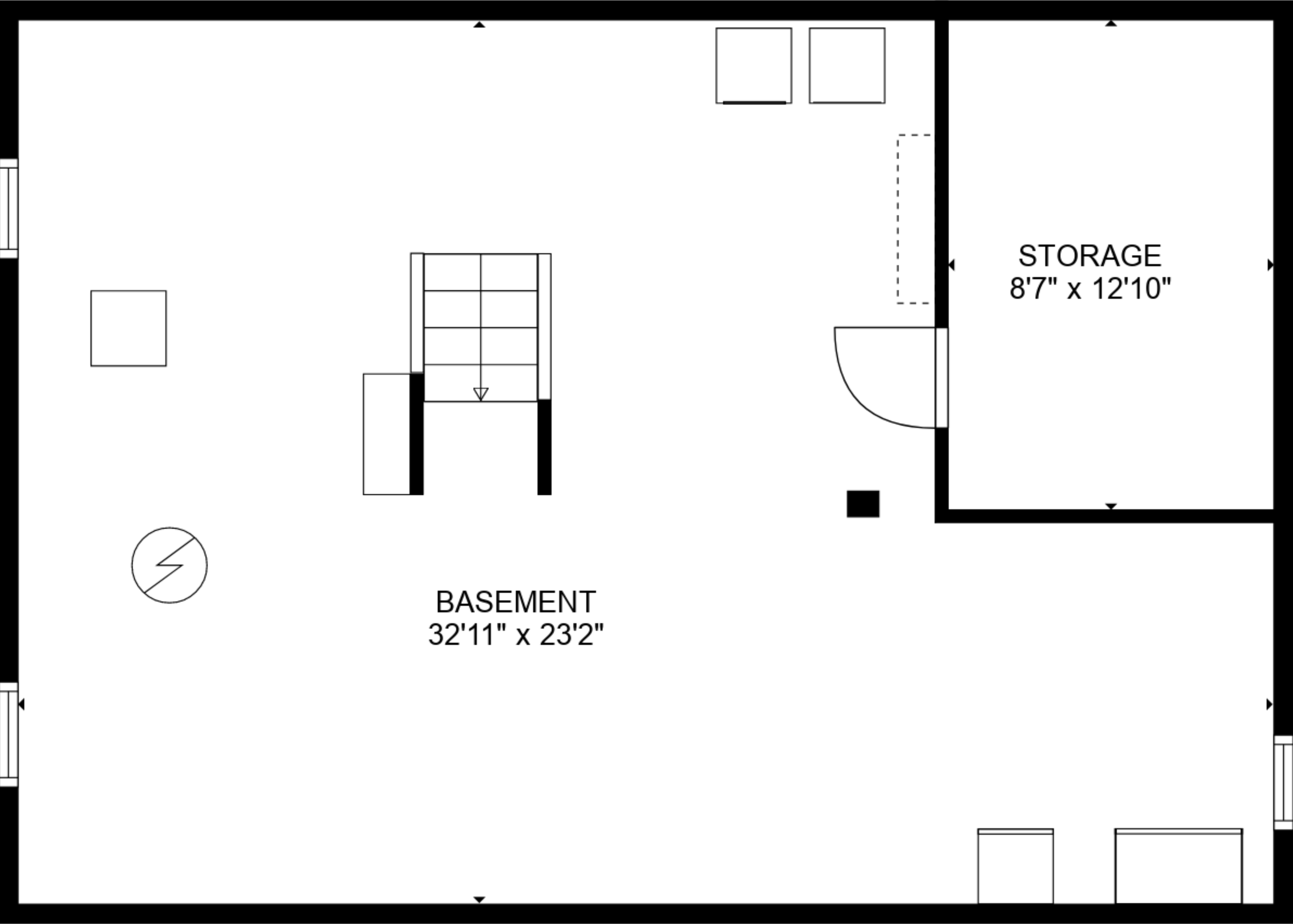
MEASUREMENTS ARE DEEMED RELIABLE BUT ARE NOT GUARANTEED.



FLOOR 2



FLOOR 3



FLOOR 1

TOTAL: 1291 sq. ft
BELOW GROUND: 0 sq. ft, FLOOR 2: 1291 sq. ft, FLOOR 3: 0 sq. ft
EXCLUDED AREAS: BASEMENT: 655 sq. ft, STORAGE: 110 sq. ft, COVERED PATIO: 273 sq. ft,
LOW CEILING: 247 sq. ft, ATTIC: 282 sq. ft
WALLS: 186 sq. ft

MEASUREMENTS ARE DEEMED RELIABLE BUT ARE NOT GUARANTEED.