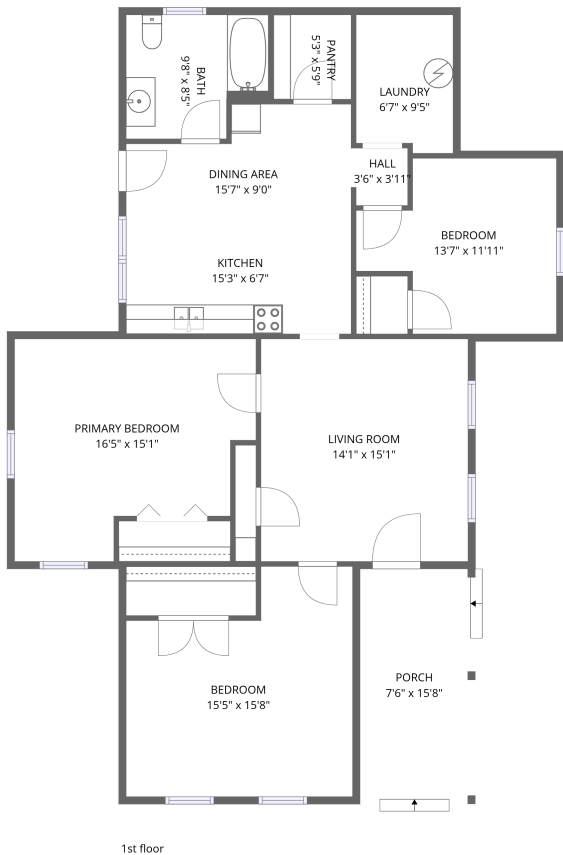


Home data report

2407 W Flat Rock Rd,Flat Rock,IN,US



Total Area: 1284 sq. ft

1st Floor: 1284 sq. ft

Excluded: Porch 117 sq. ft, Walls: 91 sq. ft

Property summary

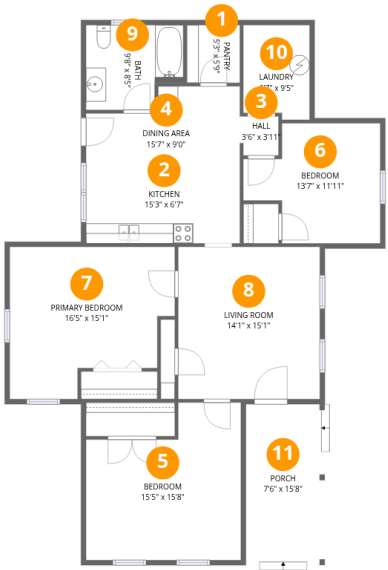
 **1** Floors

 **3** Bedrooms

 **1** Bathrooms

Home data report

2407 W Flat Rock Rd,Flat Rock,IN,US



Room dimensions

Floor 1 Total:1284sqft Excluded: 117sqft

#		Dimensions	sqft	Counted as living area
1	Pantry	5'3" x 5'9"	30 sq. ft	Yes
2	Kitchen	15'3" x 6'7"	101 sq. ft	Yes
3	Hall	3'6" x 3'11"	14 sq. ft	Yes
4	Dining Area	15'7" x 9'0"	119 sq. ft	Yes
5	Bedroom	15'5" x 15'8"	207 sq. ft	Yes
6	Bedroom	13'7" x 11'11"	132 sq. ft	Yes
7	Primary Bedroom	16'5" x 15'1"	209 sq. ft	Yes
8	Living Room	14'1" x 15'1"	213 sq. ft	Yes
9	Bath	9'8" x 8'5"	74 sq. ft	Yes
10	Laundry	6'7" x 9'5"	59 sq. ft	Yes
11	Porch	7'6" x 15'8"	117 sq. ft	No

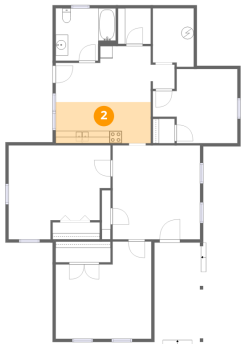
1 Floor 1 - Pantry



Dimensions: 5'3" x 5'9"
Area: 30 sq. ft
Counted as living area: Yes

Heated: Yes
Finished: Yes
Enclosed: Yes
Contiguous: Yes
Permitted: Yes
Wet space: No
Addition: No
Conversion: No

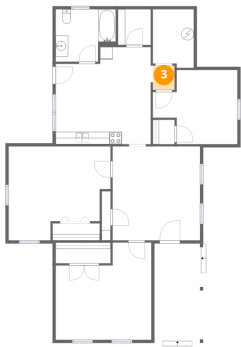
2 Floor 1 - Kitchen



Dimensions: 15'3" x 6'7"
Area: 101 sq. ft
Counted as living area: Yes

Heated: Yes
Finished: Yes
Enclosed: Yes
Contiguous: Yes
Permitted: Yes
Wet space: No
Addition: No
Conversion: No

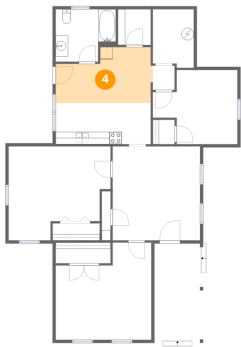
3 Floor 1 - Hall



Dimensions: 3'6" x 3'11"
Area: 14 sq. ft
Counted as living area: Yes

Heated: Yes
Finished: Yes
Enclosed: Yes
Contiguous: Yes
Permitted: Yes
Wet space: No
Addition: No
Conversion: No

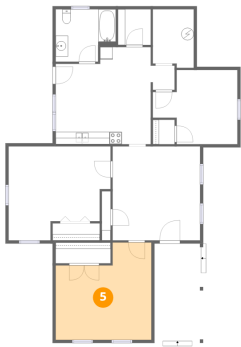
4 Floor 1 - Dining Area



Dimensions: 15'7" x 9'0"
Area: 119 sq. ft
Counted as living area: Yes

Heated: Yes
Finished: Yes
Enclosed: Yes
Contiguous: Yes
Permitted: Yes
Wet space: No
Addition: No
Conversion: No

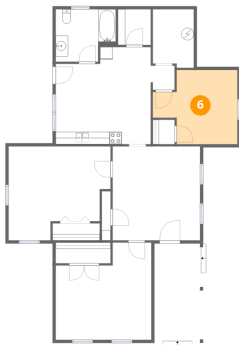
5 Floor 1 - Bedroom



Dimensions: 15'5" x 15'8"
Area: 207 sq. ft
Counted as living area: Yes

Heated: Yes
Finished: Yes
Enclosed: Yes
Contiguous: Yes
Permitted: Yes
Wet space: No
Addition: No
Conversion: No

6 Floor 1 - Bedroom



Dimensions: 13'7" x 11'11"
Area: 132 sq. ft
Counted as living area: Yes

Heated: Yes
Finished: Yes
Enclosed: Yes
Contiguous: Yes
Permitted: Yes
Wet space: No
Addition: No
Conversion: No

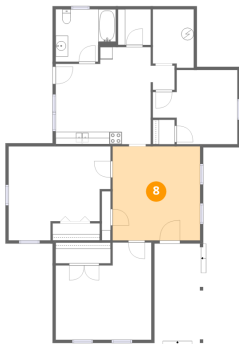
7 Floor 1 - Primary Bedroom



Dimensions: 16'5" x 15'1"
Area: 209 sq. ft
Counted as living area: Yes

Heated: Yes
Finished: Yes
Enclosed: Yes
Contiguous: Yes
Permitted: Yes
Wet space: No
Addition: No
Conversion: No

8 Floor 1 - Living Room



Dimensions: 14'1" x 15'1"
Area: 213 sq. ft
Counted as living area: Yes

Heated: Yes
Finished: Yes
Enclosed: Yes
Contiguous: Yes
Permitted: Yes
Wet space: No
Addition: No
Conversion: No

9 Floor 1 - Bath



Dimensions: 9'8" x 8'5"
Area: 74 sq. ft
Counted as living area: Yes

Heated: Yes
Finished: Yes
Enclosed: Yes
Contiguous: Yes
Permitted: Yes
Wet space: Yes
Addition: No
Conversion: No

10 Floor 1 - Laundry



Dimensions: 6'7" x 9'5"
Area: 59 sq. ft
Counted as living area: Yes

Heated: Yes
Finished: Yes
Enclosed: Yes
Contiguous: Yes
Permitted: Yes
Wet space: No
Addition: No
Conversion: No

11 Floor 1 - Porch



Dimensions: 7'6" x 15'8"
Area: 117 sq. ft
Counted as living area: No

Heated: No
Finished: No
Enclosed: No
Contiguous: Yes
Permitted: Yes
Wet space: No
Addition: No
Conversion: No