

Home data report

1969 N Klare Rd,Shelbyville,IN,US




Total Area: 1438 sq. ft

Below Ground: 0 sq. ft, 1st Floor: 906 sq. ft, 2nd Floor: 532 sq. ft


Excluded: Basement 705 sq. ft, Fireplace 6 sq. ft, Low ceiling 16 sq. ft, Walls: 185 sq. ft

Property summary

 **3** Floors

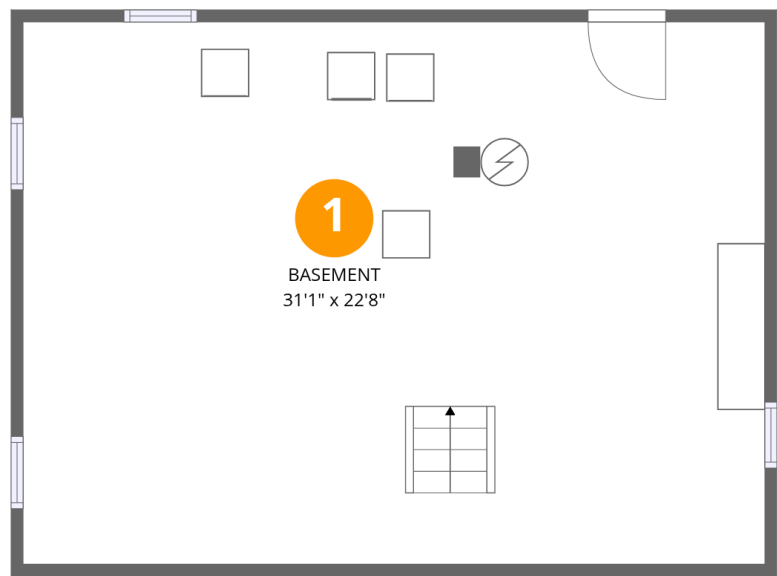
 **3** Bedrooms

 **1** Bathrooms

 **1** Half baths

Home data report

1969 N Klare Rd,Shelbyville,IN,US



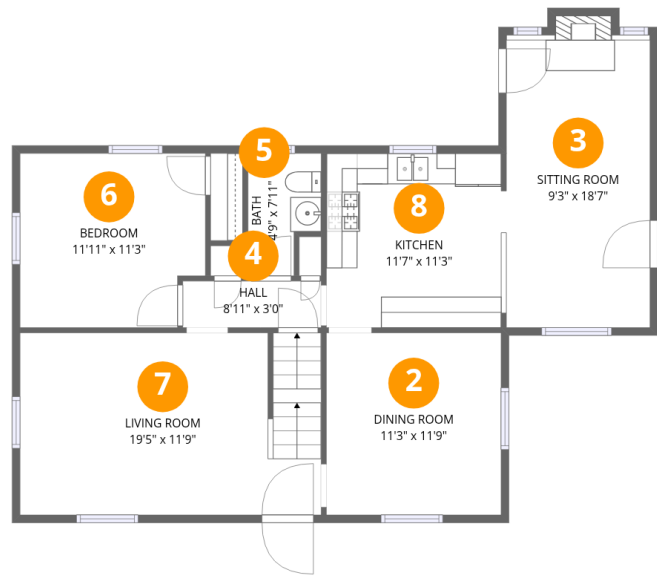
Room dimensions

Floor 1 Below grade Total:0sqft Excluded: 705sqft

#		Dimensions	sqft	Counted as living area
1	Basement	31'1" x 22'8"	705 sq. ft	No

Home data report

1969 N Klare Rd,Shelbyville,IN,US



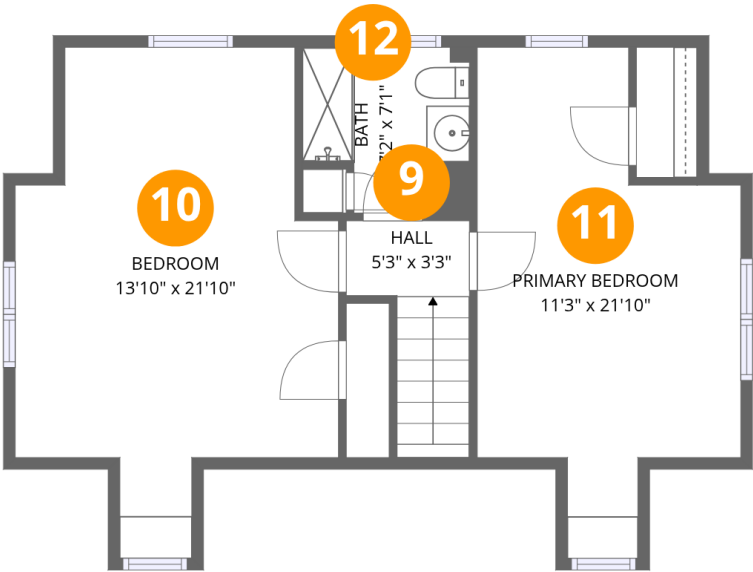
Room dimensions

Floor 2 Total:906sqft   Excluded: 6sqft

#		Dimensions	sqft	Counted as living area
2	Dining Room	11'3" x 11'9"	133 sq. ft	Yes
3	Sitting Room	9'3" x 18'7"	180 sq. ft	Yes
4	Hall	8'11" x 3'0"	27 sq. ft	Yes
5	Bath	4'9" x 7'11"	32 sq. ft	Yes
6	Bedroom	11'11" x 11'3"	129 sq. ft	Yes
7	Living Room	19'5" x 11'9"	227 sq. ft	Yes
8	Kitchen	11'7" x 11'3"	130 sq. ft	Yes

Home data report

1969 N Klare Rd,Shelbyville,IN,US

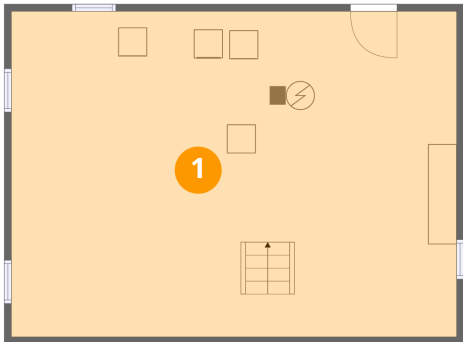


Room dimensions

Floor 3 Total:532sqft Excluded: 16sqft

#		Dimensions	sqft	Counted as living area
9	Hall	5'3" x 3'3"	38 sq. ft	Yes
10	Bedroom	13'10" x 21'10"	221 sq. ft	Yes
11	Primary Bedroom	11'3" x 21'10"	175 sq. ft	Yes
12	Bath	7'2" x 7'1"	46 sq. ft	Yes

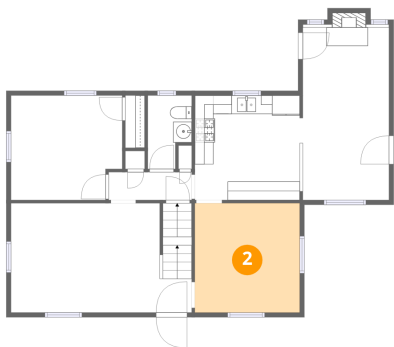
1 Floor 1 - Basement



Dimensions: 31'1" x 22'8"  
Area: 705 sq. ft  
Counted as living area: No

Heated: Yes  
Finished: No  
Enclosed: Yes  
Contiguous: Yes  
Permitted: Yes  
Wet space: No  
Addition: No  
Conversion: No

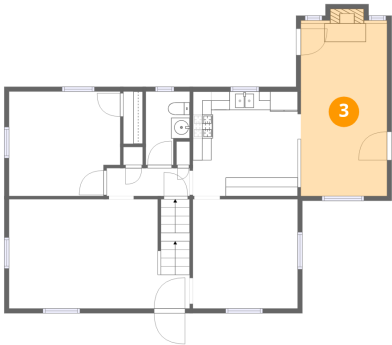
2 Floor 2 - Dining Room



Dimensions: 11'3" x 11'9"  
Area: 133 sq. ft  
Counted as living area: Yes

Heated: Yes  
Finished: Yes  
Enclosed: Yes  
Contiguous: Yes  
Permitted: Yes  
Wet space: No  
Addition: No  
Conversion: No

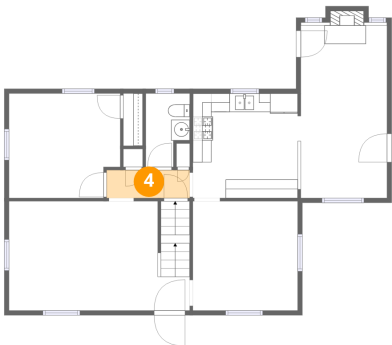
3 Floor 2 - Sitting Room



Dimensions: 9'3" x 18'7"  
Area: 180 sq. ft  
Counted as living area: Yes

Heated: Yes  
Finished: Yes  
Enclosed: Yes  
Contiguous: Yes  
Permitted: Yes  
Wet space: No  
Addition: No  
Conversion: No

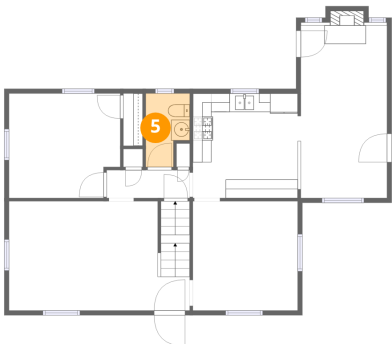
4 Floor 2 - Hall



Dimensions: 8'11" x 3'0"  
Area: 27 sq. ft  
Counted as living area: Yes

Heated: Yes  
Finished: Yes  
Enclosed: Yes  
Contiguous: Yes  
Permitted: Yes  
Wet space: No  
Addition: No  
Conversion: No

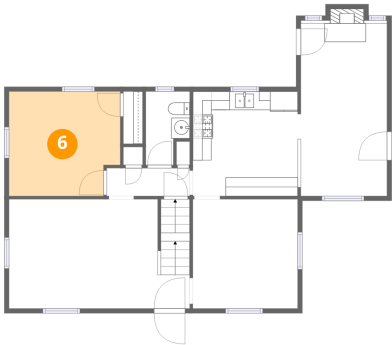
5 Floor 2 - Bath



Dimensions: 4'9" x 7'11"  
Area: 32 sq. ft  
Counted as living area: Yes

Heated: Yes  
Finished: Yes  
Enclosed: Yes  
Contiguous: Yes  
Permitted: Yes  
Wet space: Yes  
Addition: No  
Conversion: No

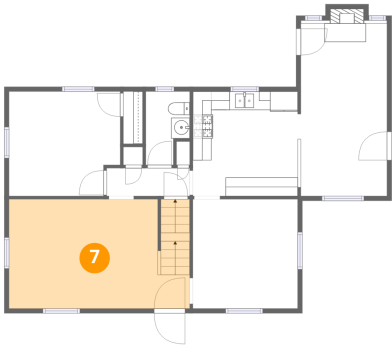
6 Floor 2 - Bedroom



Dimensions: 11'11" x 11'3"  
Area: 129 sq. ft  
Counted as living area: Yes

Heated: Yes  
Finished: Yes  
Enclosed: Yes  
Contiguous: Yes  
Permitted: Yes  
Wet space: No  
Addition: No  
Conversion: No

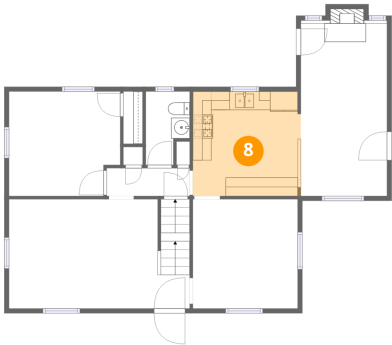
7 Floor 2 - Living Room



Dimensions: 19'5" x 11'9"  
Area: 227 sq. ft  
Counted as living area: Yes

Heated: Yes  
Finished: Yes  
Enclosed: Yes  
Contiguous: Yes  
Permitted: Yes  
Wet space: No  
Addition: No  
Conversion: No

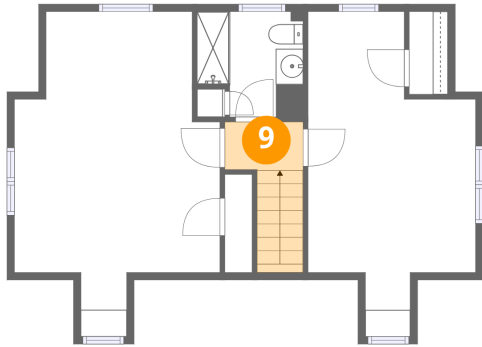
8 Floor 2 - Kitchen



Dimensions: 11'7" x 11'3"  
Area: 130 sq. ft  
Counted as living area: Yes

Heated: Yes  
Finished: Yes  
Enclosed: Yes  
Contiguous: Yes  
Permitted: Yes  
Wet space: No  
Addition: No  
Conversion: No

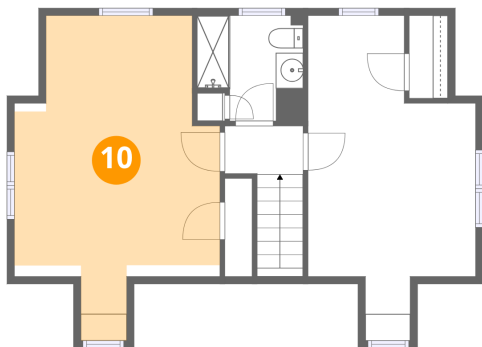
### 9 Floor 3 - Hall



Dimensions: 5'3" x 3'3"  
Area: 38 sq. ft  
Counted as living area: Yes

Heated: Yes  
Finished: Yes  
Enclosed: Yes  
Contiguous: Yes  
Permitted: Yes  
Wet space: No  
Addition: No  
Conversion: No

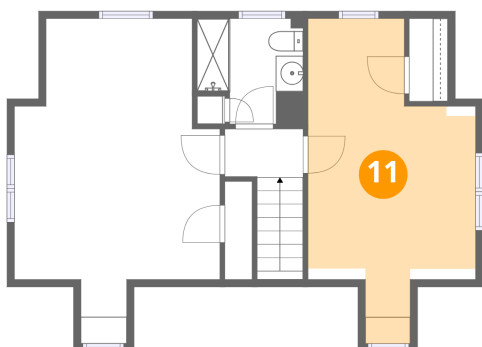
### 10 Floor 3 - Bedroom



Dimensions: 13'10" x 21'10"  
Area: 221 sq. ft  
Counted as living area: Yes

Heated: Yes  
Finished: Yes  
Enclosed: Yes  
Contiguous: Yes  
Permitted: Yes  
Wet space: No  
Addition: No  
Conversion: No

### 11 Floor 3 - Primary Bedroom

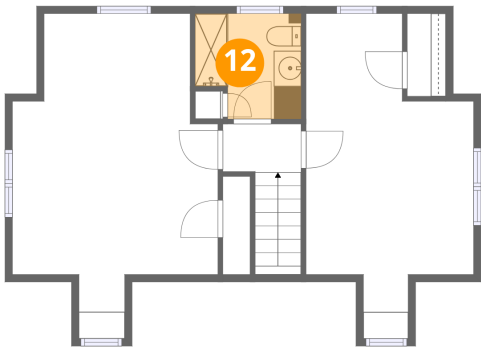


Dimensions: 11'3" x 21'10"  
Area: 175 sq. ft  
Counted as living area: Yes

Heated: Yes  
Finished: Yes  
Enclosed: Yes  
Contiguous: Yes  
Permitted: Yes  
Wet space: No  
Addition: No  
Conversion: No



12 Floor 3 - Bath



Dimensions: 7'2" x 7'1"  
Area: 46 sq. ft  
Counted as living area: Yes

Heated: Yes  
Finished: Yes  
Enclosed: Yes  
Contiguous: Yes  
Permitted: Yes  
Wet space: Yes  
Addition: No  
Conversion: No