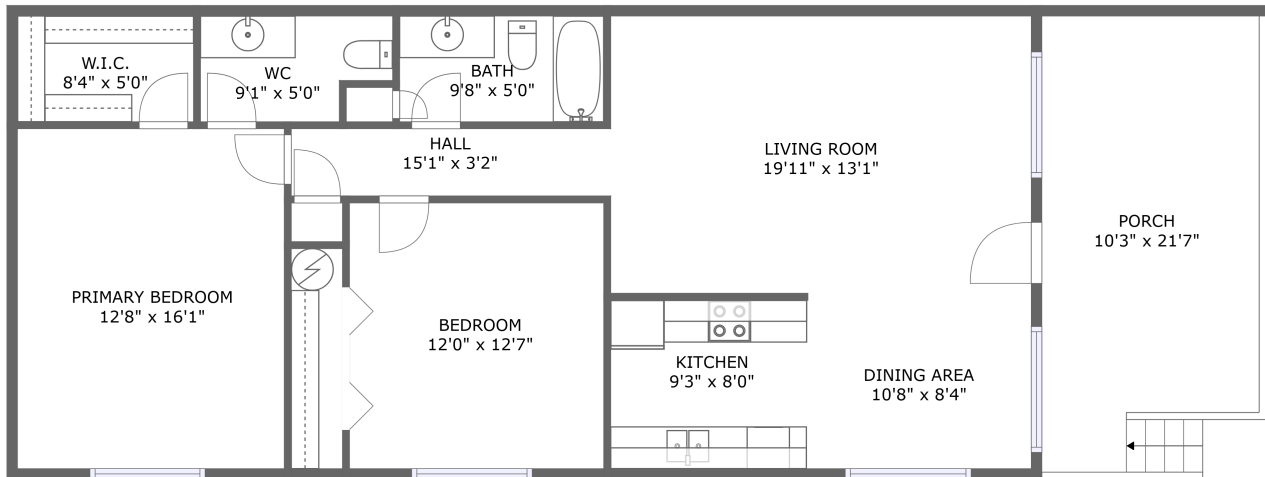



2630 Spyglass Drive, Pismo Beach, California 93449, United States, Unit A




FLOOR 1

Property summary

 **0** Garages

 **2** Bedrooms

 **1** Bathrooms

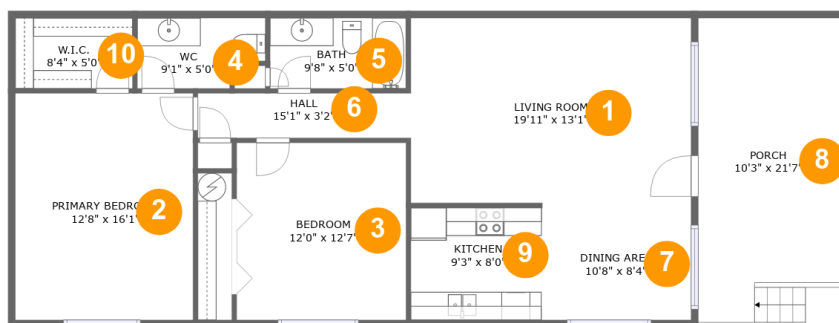
 **1** Half baths

 **1** Floors

 **1,030**
Gross living
area sqft

 **1,235**
Total sqft

2630 Spyglass Drive, Pismo Beach, California 93449, United States, Unit A



Room dimensions

Floor 1

Total sqft: 1235 Living area: 1030

#		Dimensions	sqft	Counted as living area
1	Living Room	19'11" x 13'1"	261 sq. ft	Yes
2	Primary Bedroom	12'8" x 16'1"	203 sq. ft	Yes
3	Bedroom	12'0" x 12'7"	151 sq. ft	Yes
4	WC	9'1" x 5'0"	41 sq. ft	Yes
5	Bath	9'8" x 5'0"	48 sq. ft	Yes
6	Hall	15'1" x 3'2"	48 sq. ft	Yes
7	Dining Area	10'8" x 8'4"	88 sq. ft	Yes
8	Porch	10'3" x 21'7"	205 sq. ft	No
9	Kitchen	9'3" x 8'0"	74 sq. ft	Yes
10	W.I.C.	8'4" x 5'0"	42 sq. ft	Yes

2630 Spyglass Drive, Pismo Beach, California 93449, United States, Unit A

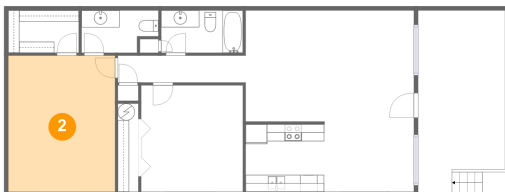
1 Floor 1 - Living Room



Dimensions: 19'11" x 13'1"
Area: 261 sq. ft
Counted as living area: Yes

Heated: Yes
Finished: Yes
Enclosed: Yes
Contiguous: Yes
Permitted: Yes
Wet space: No
Addition: No
Conversion: No

2 Floor 1 - Primary Bedroom



Dimensions: 12'8" x 16'1"
Area: 203 sq. ft
Counted as living area: Yes

Heated: Yes
Finished: Yes
Enclosed: Yes
Contiguous: Yes
Permitted: Yes
Wet space: No
Addition: No
Conversion: No

2630 Spyglass Drive, Pismo Beach, California 93449, United States, Unit A

3 Floor 1 - Bedroom



Dimensions: 12'0" x 12'7"
Area: 151 sq. ft
Counted as living area: Yes

Heated: Yes
Finished: Yes
Enclosed: Yes
Contiguous: Yes
Permitted: Yes
Wet space: No
Addition: No
Conversion: No

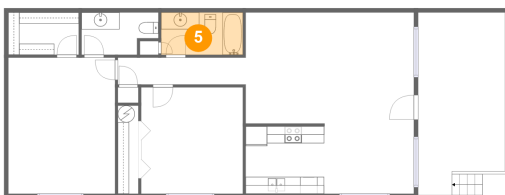
4 Floor 1 - WC



Dimensions: 9'1" x 5'0"
Area: 41 sq. ft
Counted as living area: Yes

Heated: Yes
Finished: Yes
Enclosed: Yes
Contiguous: Yes
Permitted: Yes
Wet space: Yes
Addition: No
Conversion: No

5 Floor 1 - Bath

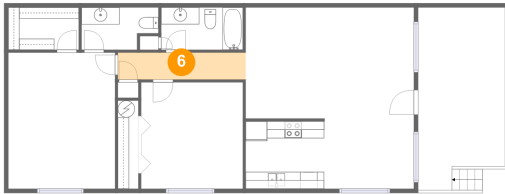


Dimensions: 9'8" x 5'0"
Area: 48 sq. ft
Counted as living area: Yes

Heated: Yes
Finished: Yes
Enclosed: Yes
Contiguous: Yes
Permitted: Yes
Wet space: Yes
Addition: No
Conversion: No

**2630 Spyglass Drive, Pismo Beach, California 93449,
United States, Unit A**

6 Floor 1 - Hall



Dimensions: 15'1" x 3'2"
Area: 48 sq. ft
Counted as living area: Yes

Heated: Yes
Finished: Yes
Enclosed: Yes
Contiguous: Yes
Permitted: Yes
Wet space: No
Addition: No
Conversion: No

7 Floor 1 - Dining Area



Dimensions: 10'8" x 8'4"
Area: 88 sq. ft
Counted as living area: Yes

Heated: Yes
Finished: Yes
Enclosed: Yes
Contiguous: Yes
Permitted: Yes
Wet space: No
Addition: No
Conversion: No

8 Floor 1 - Porch



Dimensions: 10'3" x 21'7"
Area: 205 sq. ft
Counted as living area: No

Heated: No
Finished: Yes
Enclosed: No
Contiguous: Yes
Permitted: Yes
Wet space: No
Addition: No
Conversion: No

**2630 Spyglass Drive, Pismo Beach, California 93449,
United States, Unit A**

9 Floor 1 - Kitchen



Dimensions: 9'3" x 8'0"
Area: 74 sq. ft
Counted as living area: Yes

Heated: Yes
Finished: Yes
Enclosed: Yes
Contiguous: Yes
Permitted: Yes
Wet space: No
Addition: No
Conversion: No

10 Floor 1 - W.I.C.



Dimensions: 8'4" x 5'0"
Area: 42 sq. ft
Counted as living area: Yes

Heated: Yes
Finished: Yes
Enclosed: Yes
Contiguous: Yes
Permitted: Yes
Wet space: No
Addition: No
Conversion: No