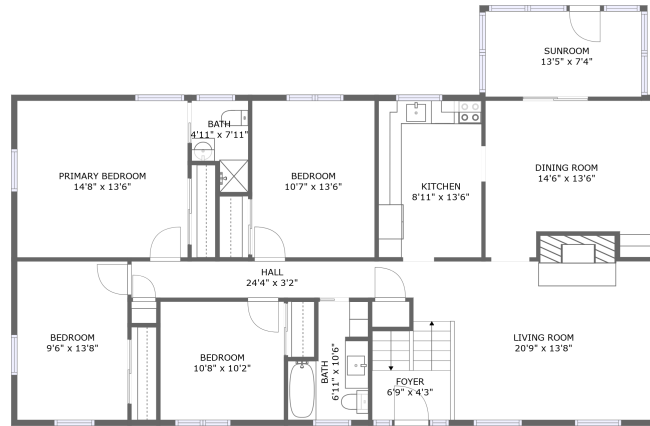
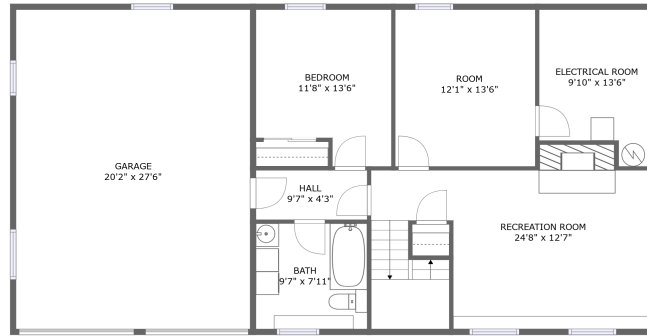


545 North Adams Street, North End, Manchester, Hillsborough County, New Hampshire, United States,



FLOOR 2



FLOOR 1

Property summary


 **1** Garages

 **5** Bedrooms

 **3** Bathrooms

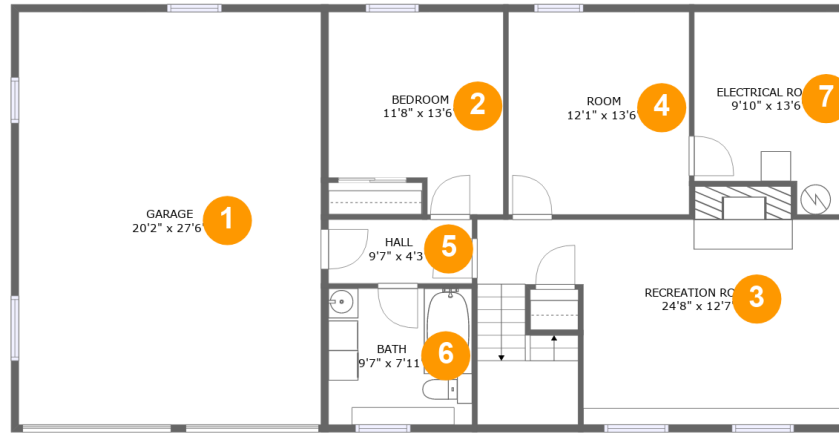
 **0** Half baths

 **2** Floors

 **2,581** Gross living area sqft

 **3,300** Total sqft

**545 North Adams Street, North End, Manchester,
Hillsborough County, New Hampshire, United States,**



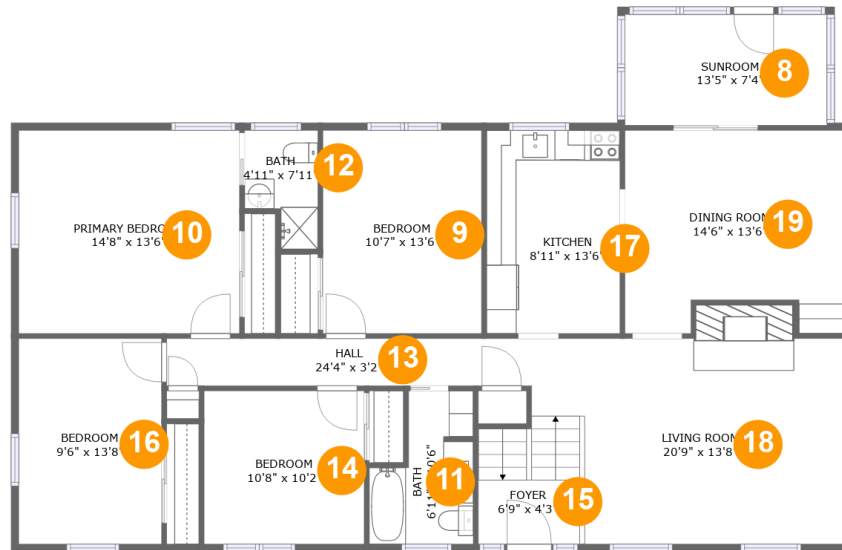
Room dimensions

Floor 1

Total sqft: 1594 Living area: 875

#		Dimensions	sqft	Counted as living area
1	Garage	20'2" x 27'6"	555 sq. ft	No
2	Bedroom	11'8" x 13'6"	141 sq. ft	Yes
3	Recreation Room	24'8" x 12'7"	333 sq. ft	Yes
4	Room	12'1" x 13'6"	163 sq. ft	Yes
5	Hall	9'7" x 4'3"	41 sq. ft	Yes
6	Bath	9'7" x 7'11"	87 sq. ft	Yes
7	Electrical Room	9'10" x 13'6"	117 sq. ft	No

545 North Adams Street, North End, Manchester, Hillsborough County, New Hampshire, United States,



Room dimensions

Floor 2

Total sqft: 1706 Living area: 1706

#		Dimensions	sqft	Counted as living area
8	Sunroom	13'5" x 7'4"	99 sq. ft	Yes
9	Bedroom	10'7" x 13'6"	143 sq. ft	Yes
10	Primary Bedroom	14'8" x 13'6"	199 sq. ft	Yes
11	Bath	6'11" x 10'6"	57 sq. ft	Yes
12	Bath	4'11" x 7'11"	32 sq. ft	Yes
13	Hall	24'4" x 3'2"	76 sq. ft	Yes
14	Bedroom	10'8" x 10'2"	109 sq. ft	Yes
15	Foyer	6'9" x 4'3"	29 sq. ft	Yes
16	Bedroom	9'6" x 13'8"	130 sq. ft	Yes
17	Kitchen	8'11" x 13'6"	120 sq. ft	Yes
18	Living Room	20'9" x 13'8"	297 sq. ft	Yes

**545 North Adams Street, North End, Manchester,
Hillsborough County, New Hampshire, United States,**

#		Dimensions	sqft	Counted as living area
19	Dining Room	14'6" x 13'6"	180 sq. ft	Yes

**545 North Adams Street, North End, Manchester,
Hillsborough County, New Hampshire, United States,**

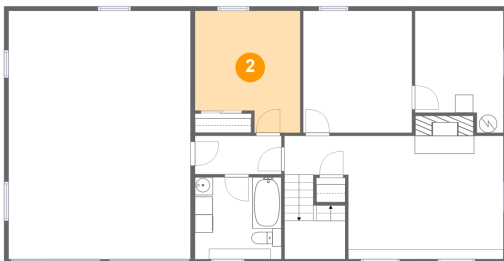
1 Floor 1 - Garage



Dimensions: 20'2" x 27'6"
Area: 555 sq. ft
Counted as living area: No

Heated: No
Finished: No
Enclosed: Yes
Contiguous: Yes
Permitted: Yes
Wet space: No
Addition: No
Conversion: No

2 Floor 1 - Bedroom

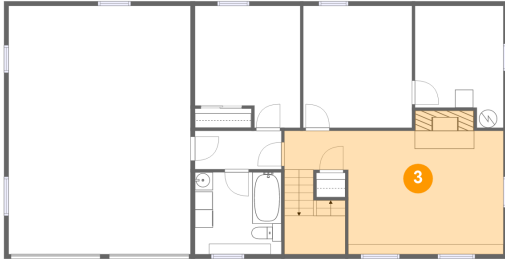


Dimensions: 11'8" x 13'6"
Area: 141 sq. ft
Counted as living area: Yes

Heated: Yes
Finished: Yes
Enclosed: Yes
Contiguous: Yes
Permitted: Yes
Wet space: No
Addition: No
Conversion: No

545 North Adams Street, North End, Manchester,
Hillsborough County, New Hampshire, United States,

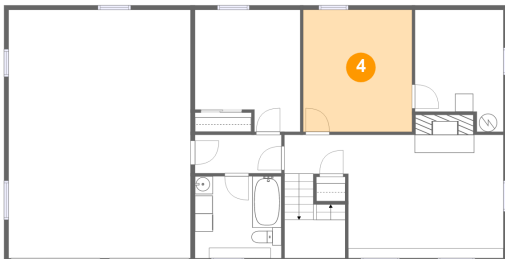
3 Floor 1 - Recreation Room



Dimensions: 24'8" x 12'7"
Area: 333 sq. ft
Counted as living area: Yes

Heated: Yes
Finished: Yes
Enclosed: Yes
Contiguous: Yes
Permitted: Yes
Wet space: No
Addition: No
Conversion: No

4 Floor 1 - Room



Dimensions: 12'1" x 13'6"
Area: 163 sq. ft
Counted as living area: Yes

Heated: Yes
Finished: Yes
Enclosed: Yes
Contiguous: Yes
Permitted: Yes
Wet space: No
Addition: No
Conversion: No

5 Floor 1 - Hall

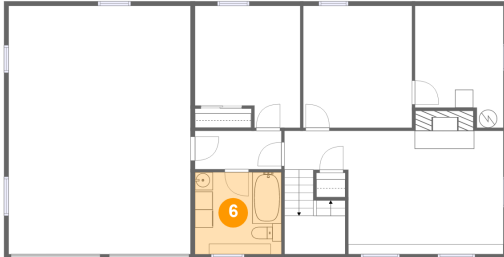


Dimensions: 9'7" x 4'3"
Area: 41 sq. ft
Counted as living area: Yes

Heated: Yes
Finished: Yes
Enclosed: Yes
Contiguous: Yes
Permitted: Yes
Wet space: No
Addition: No
Conversion: No

**545 North Adams Street, North End, Manchester,
Hillsborough County, New Hampshire, United States,**

6 Floor 1 - Bath



Dimensions: 9'7" x 7'11"
Area: 87 sq. ft
Counted as living area: Yes

Heated: Yes
Finished: Yes
Enclosed: Yes
Contiguous: Yes
Permitted: Yes
Wet space: Yes
Addition: No
Conversion: No

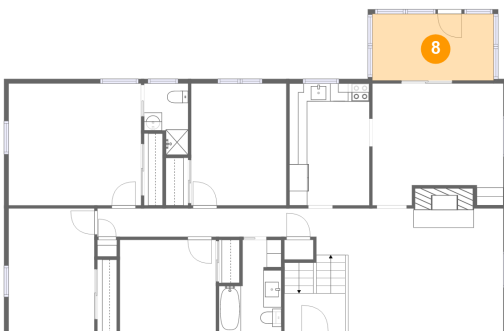
7 Floor 1 - Electrical Room



Dimensions: 9'10" x 13'6"
Area: 117 sq. ft
Counted as living area: No

Heated: No
Finished: No
Enclosed: Yes
Contiguous: Yes
Permitted: Yes
Wet space: No
Addition: No
Conversion: No

8 Floor 2 - Sunroom

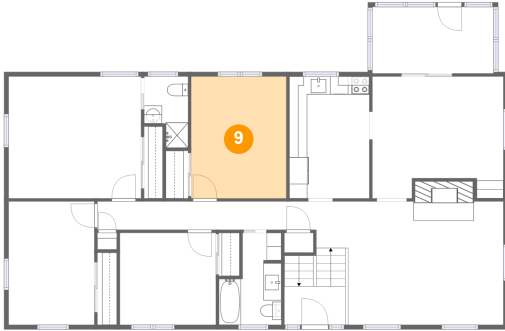


Dimensions: 13'5" x 7'4"
Area: 99 sq. ft
Counted as living area: Yes

Heated: Yes
Finished: Yes
Enclosed: Yes
Contiguous: Yes
Permitted: Yes
Wet space: No
Addition: No
Conversion: No

545 North Adams Street, North End, Manchester,
Hillsborough County, New Hampshire, United States,

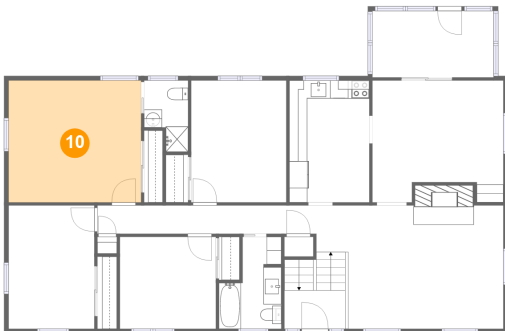
9 Floor 2 - Bedroom



Dimensions: 10'7" x 13'6"
Area: 143 sq. ft
Counted as living area: Yes

Heated: Yes
Finished: Yes
Enclosed: Yes
Contiguous: Yes
Permitted: Yes
Wet space: No
Addition: No
Conversion: No

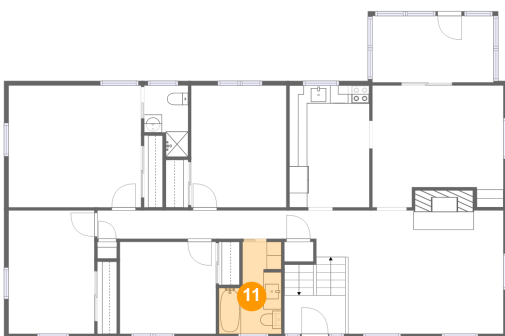
10 Floor 2 - Primary Bedroom



Dimensions: 14'8" x 13'6"
Area: 199 sq. ft
Counted as living area: Yes

Heated: Yes
Finished: Yes
Enclosed: Yes
Contiguous: Yes
Permitted: Yes
Wet space: No
Addition: No
Conversion: No

11 Floor 2 - Bath



Dimensions: 6'11" x 10'6"
Area: 57 sq. ft
Counted as living area: Yes

Heated: Yes
Finished: Yes
Enclosed: Yes
Contiguous: Yes
Permitted: Yes
Wet space: Yes
Addition: No
Conversion: No

**545 North Adams Street, North End, Manchester,
Hillsborough County, New Hampshire, United States,**

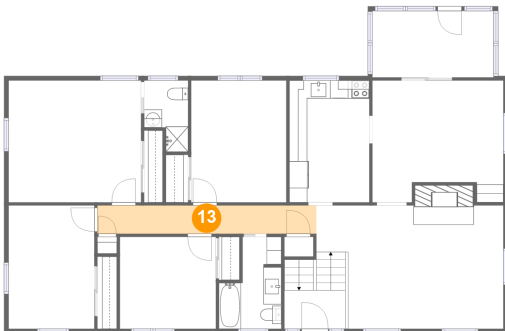
12 Floor 2 - Bath



Dimensions: 4'11" x 7'11"
Area: 32 sq. ft
Counted as living area: Yes

Heated: Yes
Finished: Yes
Enclosed: Yes
Contiguous: Yes
Permitted: Yes
Wet space: Yes
Addition: No
Conversion: No

13 Floor 2 - Hall



Dimensions: 24'4" x 3'2"
Area: 76 sq. ft
Counted as living area: Yes

Heated: Yes
Finished: Yes
Enclosed: Yes
Contiguous: Yes
Permitted: Yes
Wet space: No
Addition: No
Conversion: No

14 Floor 2 - Bedroom

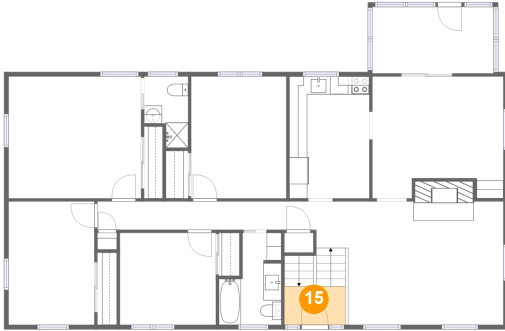


Dimensions: 10'8" x 10'2"
Area: 109 sq. ft
Counted as living area: Yes

Heated: Yes
Finished: Yes
Enclosed: Yes
Contiguous: Yes
Permitted: Yes
Wet space: No
Addition: No
Conversion: No

**545 North Adams Street, North End, Manchester,
Hillsborough County, New Hampshire, United States,**

15 Floor 2 - Foyer



Dimensions: 6'9" x 4'3"
Area: 29 sq. ft
Counted as living area: Yes

Heated: Yes
Finished: Yes
Enclosed: Yes
Contiguous: Yes
Permitted: Yes
Wet space: No
Addition: No
Conversion: No

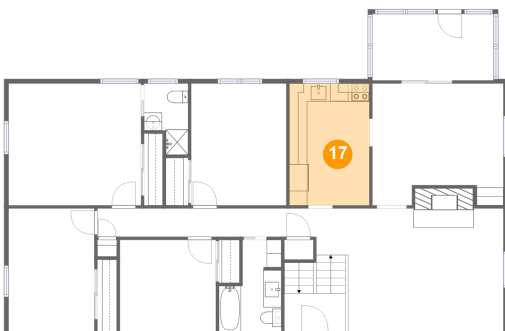
16 Floor 2 - Bedroom



Dimensions: 9'6" x 13'8"
Area: 130 sq. ft
Counted as living area: Yes

Heated: Yes
Finished: Yes
Enclosed: Yes
Contiguous: Yes
Permitted: Yes
Wet space: No
Addition: No
Conversion: No

17 Floor 2 - Kitchen

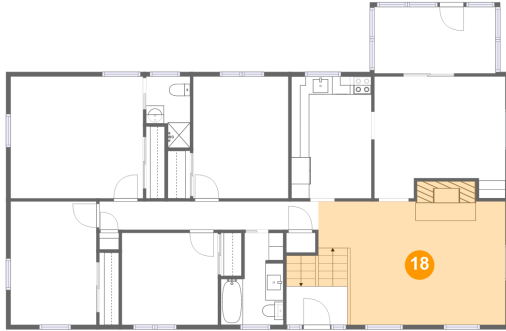


Dimensions: 8'11" x 13'6"
Area: 120 sq. ft
Counted as living area: Yes

Heated: Yes
Finished: Yes
Enclosed: Yes
Contiguous: Yes
Permitted: Yes
Wet space: No
Addition: No
Conversion: No

**545 North Adams Street, North End, Manchester,
Hillsborough County, New Hampshire, United States,**

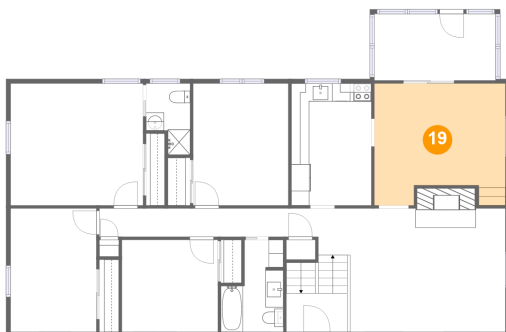
18 Floor 2 - Living Room



Dimensions: 20'9" x 13'8"
Area: 297 sq. ft
Counted as living area: Yes

Heated: Yes
Finished: Yes
Enclosed: Yes
Contiguous: Yes
Permitted: Yes
Wet space: No
Addition: No
Conversion: No

19 Floor 2 - Dining Room



Dimensions: 14'6" x 13'6"
Area: 180 sq. ft
Counted as living area: Yes

Heated: Yes
Finished: Yes
Enclosed: Yes
Contiguous: Yes
Permitted: Yes
Wet space: No
Addition: No
Conversion: No