

TOTAL Sketch by a la mode

Area Calculations Summary

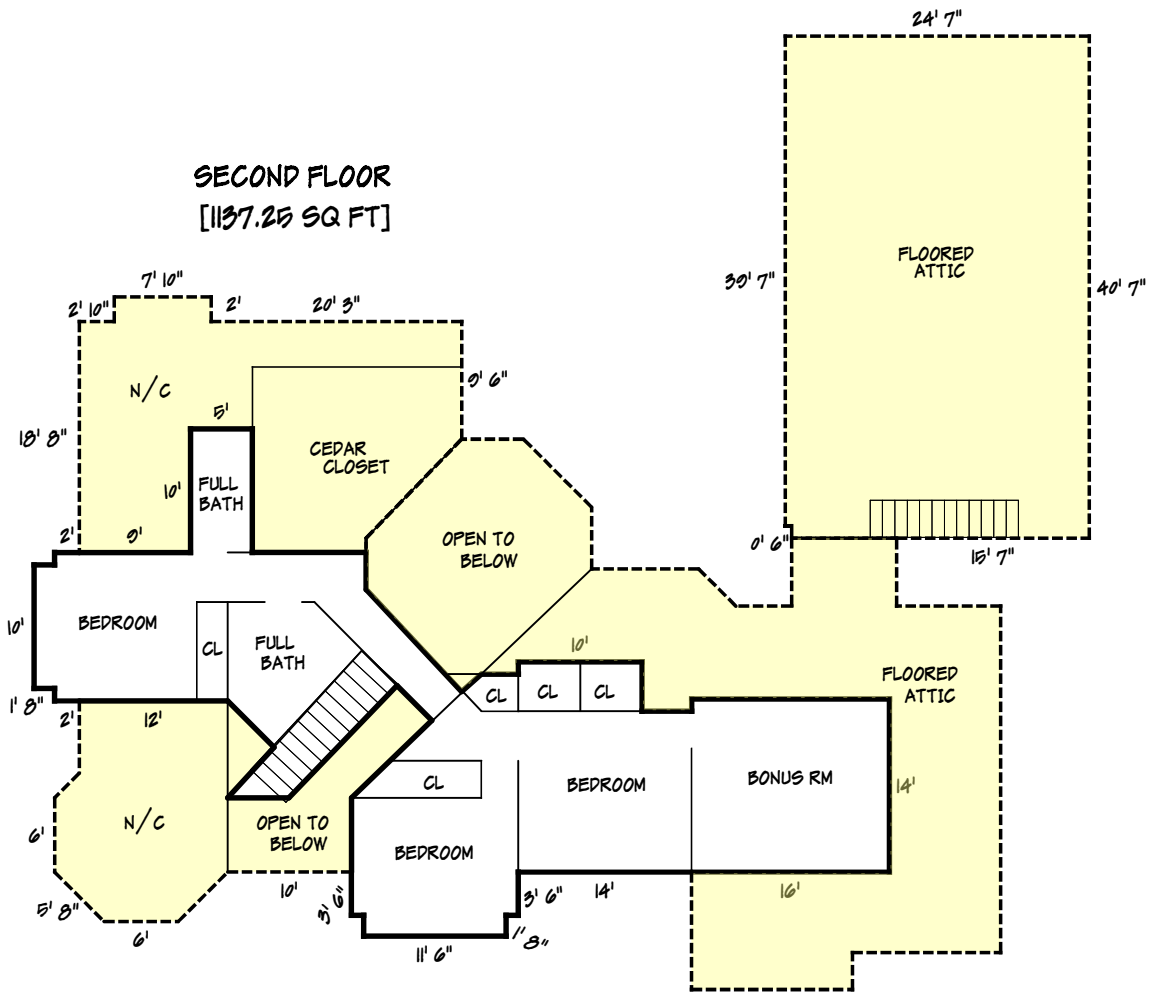
Living Area

First Floor 2859.13 Sq ft
Total Living Area (Rounded): 2859 Sq ft

Non-living Area

3 Car Garage 997.17 Sq ft

SECOND FLOOR
[1137.25 SQ FT]



TOTAL Sketch by a la mode

Area Calculations Summary

Living Area	
Second Floor	1137.25 Sq ft
Total Living Area (Rounded):	1137 Sq ft

Area Calculations Summary

Living Area		Calculation Details	
First Floor	2859.13 Sq ft	7.83 × 2	= 15.67
		12 × 2	= 24
		0.5 × 4 × 4	= 8
		0.5 × 4 × 4	= 8
		6 × 4	= 24
		13.5 × 3.5	= 47.25
		8.5 × 5.5	= 46.75
		28 × 12	= 336
		13 × 9.5	= 123.5
		21.5 × 9.42	= 202.46
		30.92 × 9.5	= 293.71
		55.08 × 6	= 330.5
		15.5 × 3	= 46.5
		0.5 × 3 × 3	= 4.5
		18.5 × 8.67	= 160.33
		23.5 × 5.5	= 129.25
		0.5 × 5.5 × 5.5	= 15.12
		29 × 35.92	= 1041.58
		0.5 × 2 × 2	= 2
Second Floor	1137.25 Sq ft	11.5 × 1.67	= 19.17
		10 × 1.67	= 16.67
		0.5 × 16 × 0	= 0
		14 × 16	= 224
		13 × 4	= 52
		17 × 10	= 170
		19.5 × 3	= 58.5
		0.5 × 1.58 × 1.42	= 1.12
		18.08 × 1.58	= 28.62
		0.5 × 2.58 × 2.42	= 3.12
		18.08 × 2.42	= 43.7
		0.5 × 3.02 × 2.83	= 4.27
		0.5 × 2.83 × 2.83	= 4
		2.08 × 2.83	= 5.89
		0.5 × 2.65 × 2.48	= 3.29
		0.5 × 2.48 × 2.58	= 3.21
		5.1 × 2.48	= 12.67
		0.5 × 3 × 0	= 0
		0.5 × 6.24 × 6.5	= 20.28
		13.34 × 6.24	= 83.28
		19.83 × 1.19	= 23.7
		0.5 × 1.75 × 1.75	= 1.53
		14 × 1.75	= 24.5
		0.5 × 2 × 2	= 2
		22 × 2	= 44.01
		22 × 3	= 66
		0.5 × 9 × 0	= 0
		9 × 12	= 108
		12 × 2	= 24
		0.5 × 4.09 × 3.75	= 7.66
		0.5 × 5.5 × 5.29	= 14.54
		10.46 × 5.5	= 57.54
		0.5 × 1 × 0.96	= 0.48
		1 × 9.5	= 9.5
		0.5 × 6 × 0	= 0
Total Living Area (Rounded):	3996 Sq ft		
Non-living Area			
3 Car Garage	997.17 Sq ft	24.58 × 39.58	= 973.09
		1 × 24.08	= 24.08