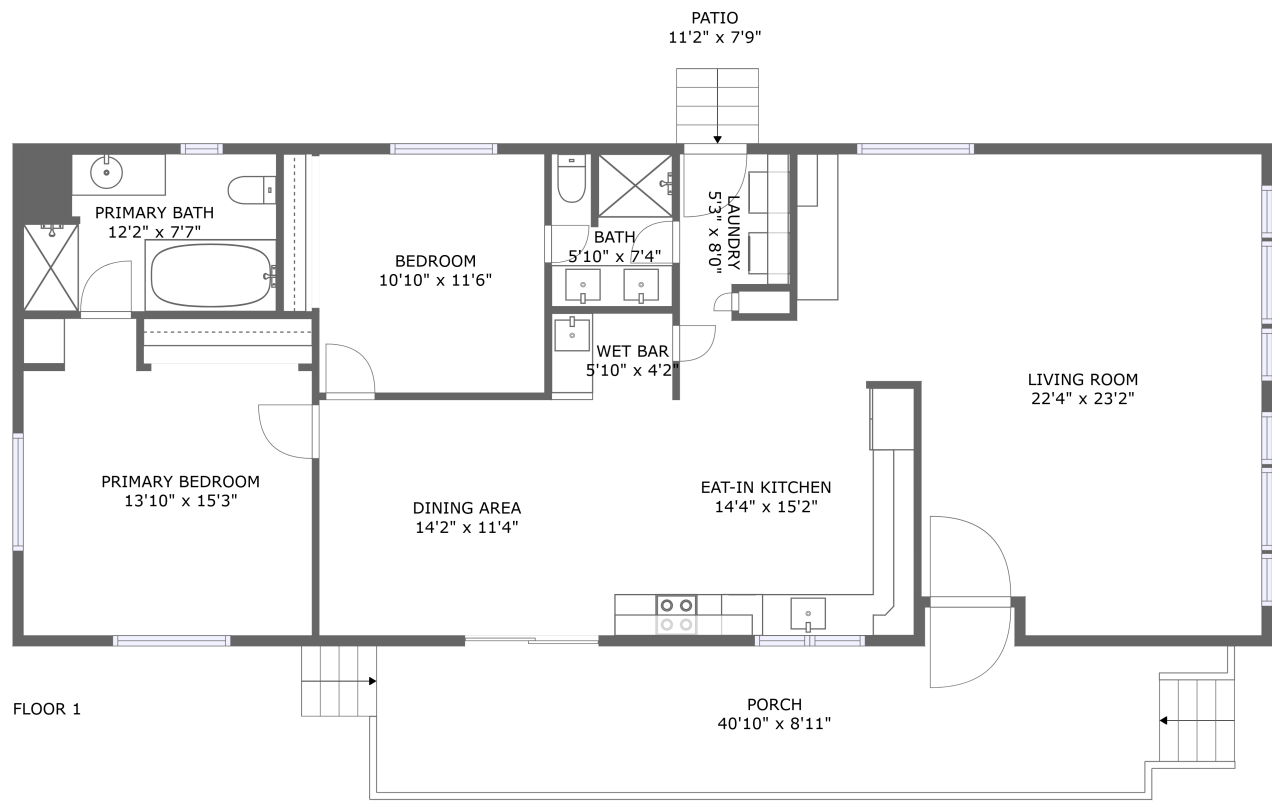


Home report

3840 North Point Drive, Pahrump, Nye County, Nevada, United States, 89060




Total Area: 1365 sq. ft


Floor 1: 1365 sq. ft

Excluded: Patio 87 sq. ft, Porch 302 sq. ft, Walls: 86 sq. ft

Property summary

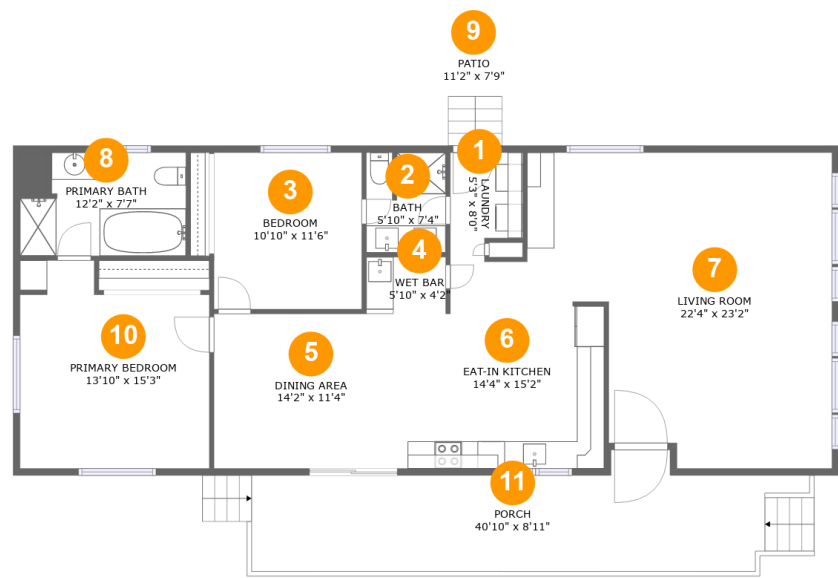
 1 Floors

 2 Bedrooms

 2 Bathrooms

Home report

3840 North Point Drive, Pahrump, Nye County, Nevada, United States, 89060



Room dimensions

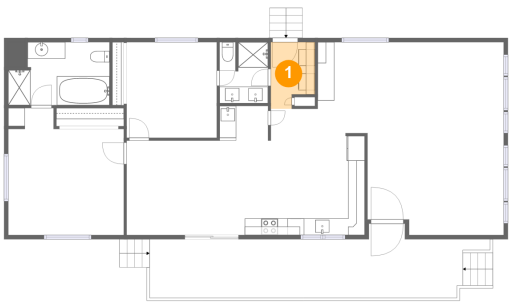
Floor 1

Total:1365sqft Excluded: 389sqft

#		Max Dimensions	sqft	Included
1	Laundry	5'3" x 8'0"	37 sq. ft	Yes
2	Bath	5'10" x 7'4"	41 sq. ft	Yes
3	Bedroom	10'10" x 11'6"	124 sq. ft	Yes
4	Wet Bar	5'10" x 4'2"	24 sq. ft	Yes
5	Dining Area	14'2" x 11'4"	161 sq. ft	Yes
6	Eat-in Kitchen	14'4" x 15'2"	188 sq. ft	Yes
7	Living Room	22'4" x 23'2"	434 sq. ft	Yes
8	Primary Bath	12'2" x 7'7"	84 sq. ft	Yes
9	Patio	11'2" x 7'9"	87 sq. ft	No
10	Primary Bedroom	13'10" x 15'3"	189 sq. ft	Yes
11	Porch	40'10" x 8'11"	302 sq. ft	No

3840 North Point Drive, Pahrump, Nye County, Nevada, United States, 89060

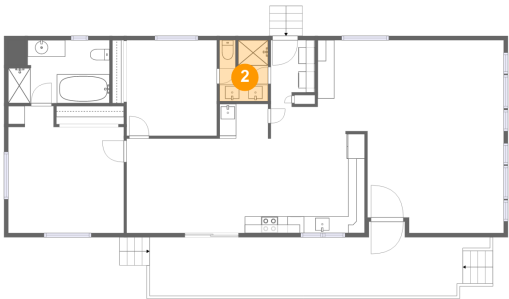
1 Floor 1 - Laundry



Max Dimensions: 5'3" x 8'0"
Calculated Area: 37 sq. ft
Included: Yes

Heated: Yes
Finished: Yes
Enclosed: Yes
Contiguous: Yes
Permitted: Yes
Wet space: No
Addition: No
Conversion: No

2 Floor 1 - Bath



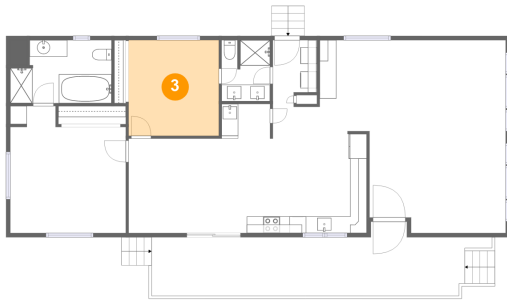
Max Dimensions: 5'10" x 7'4"
Calculated Area: 41 sq. ft
Included: Yes

Heated: Yes
Finished: Yes
Enclosed: Yes
Contiguous: Yes
Permitted: Yes
Wet space: Yes
Addition: No
Conversion: No

Home report

3840 North Point Drive, Pahrump, Nye County, Nevada, United States, 89060

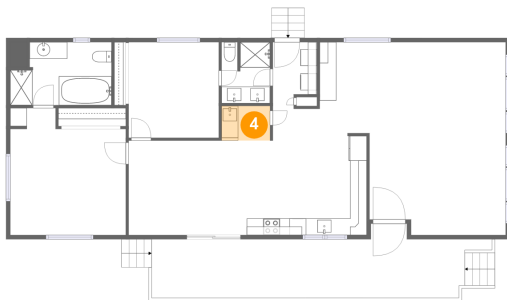
3 Floor 1 - Bedroom



Max Dimensions: 10'10" x 11'6"
Calculated Area: 124 sq. ft
Included: Yes

Heated: Yes
Finished: Yes
Enclosed: Yes
Contiguous: Yes
Permitted: Yes
Wet space: No
Addition: No
Conversion: No

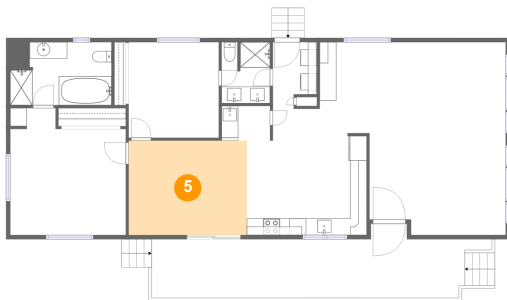
4 Floor 1 - Wet Bar



Max Dimensions: 5'10" x 4'2"
Calculated Area: 24 sq. ft
Included: Yes

Heated: Yes
Finished: Yes
Enclosed: Yes
Contiguous: Yes
Permitted: Yes
Wet space: No
Addition: No
Conversion: No

5 Floor 1 - Dining Area



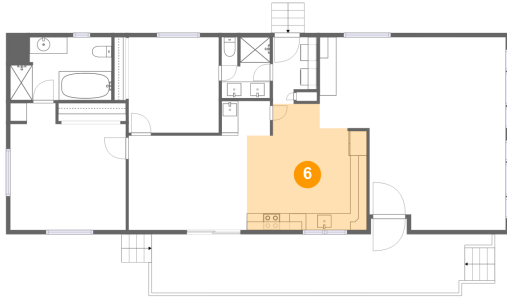
Max Dimensions: 14'2" x 11'4"
Calculated Area: 161 sq. ft
Included: Yes

Heated: Yes
Finished: Yes
Enclosed: Yes
Contiguous: Yes
Permitted: Yes
Wet space: No
Addition: No
Conversion: No

Home report

3840 North Point Drive, Pahrump, Nye County, Nevada, United States, 89060

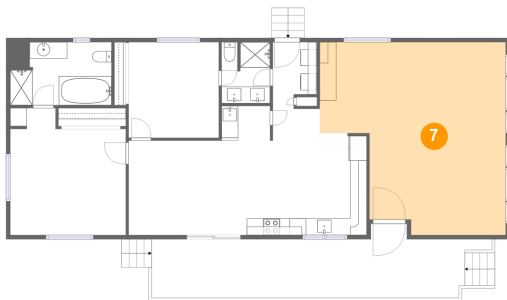
6 Floor 1 - Eat-in Kitchen



Max Dimensions: 14'4" x 15'2"
Calculated Area: 188 sq. ft
Included: Yes

Heated: Yes
Finished: Yes
Enclosed: Yes
Contiguous: Yes
Permitted: Yes
Wet space: No
Addition: No
Conversion: No

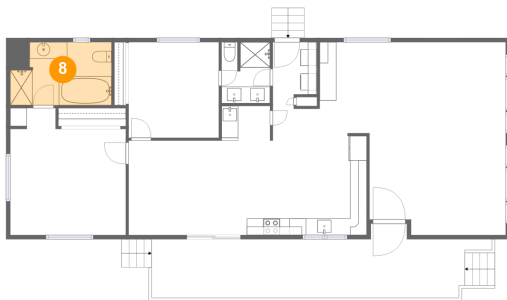
7 Floor 1 - Living Room



Max Dimensions: 22'4" x 23'2"
Calculated Area: 434 sq. ft
Included: Yes

Heated: Yes
Finished: Yes
Enclosed: Yes
Contiguous: Yes
Permitted: Yes
Wet space: No
Addition: No
Conversion: No

8 Floor 1 - Primary Bath



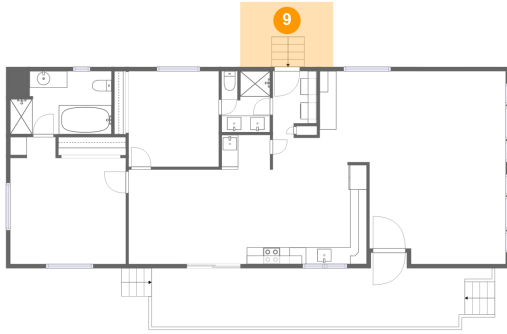
Max Dimensions: 12'2" x 7'7"
Calculated Area: 84 sq. ft
Included: Yes

Heated: Yes
Finished: Yes
Enclosed: Yes
Contiguous: Yes
Permitted: Yes
Wet space: Yes
Addition: No
Conversion: No

Home report

3840 North Point Drive, Pahrump, Nye County, Nevada, United States, 89060

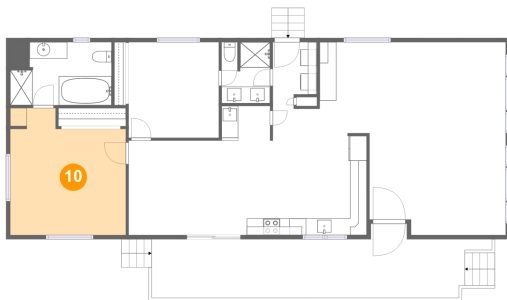
9 Floor 1 - Patio



Max Dimensions: 11'2" x 7'9"
Calculated Area: 87 sq. ft
Included: No

Heated: No
Finished: Yes
Enclosed: No
Contiguous: Yes
Permitted: Yes
Wet space: No
Addition: No
Conversion: No

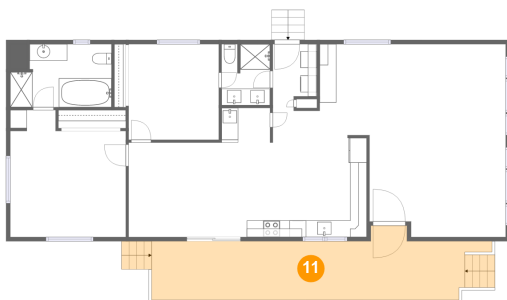
10 Floor 1 - Primary Bedroom



Max Dimensions: 13'10" x 15'3"
Calculated Area: 189 sq. ft
Included: Yes

Heated: Yes
Finished: Yes
Enclosed: Yes
Contiguous: Yes
Permitted: Yes
Wet space: No
Addition: No
Conversion: No

11 Floor 1 - Porch



Max Dimensions: 40'10" x 8'11"
Calculated Area: 302 sq. ft
Included: No

Heated: No
Finished: Yes
Enclosed: No
Contiguous: Yes
Permitted: Yes
Wet space: No
Addition: No
Conversion: No