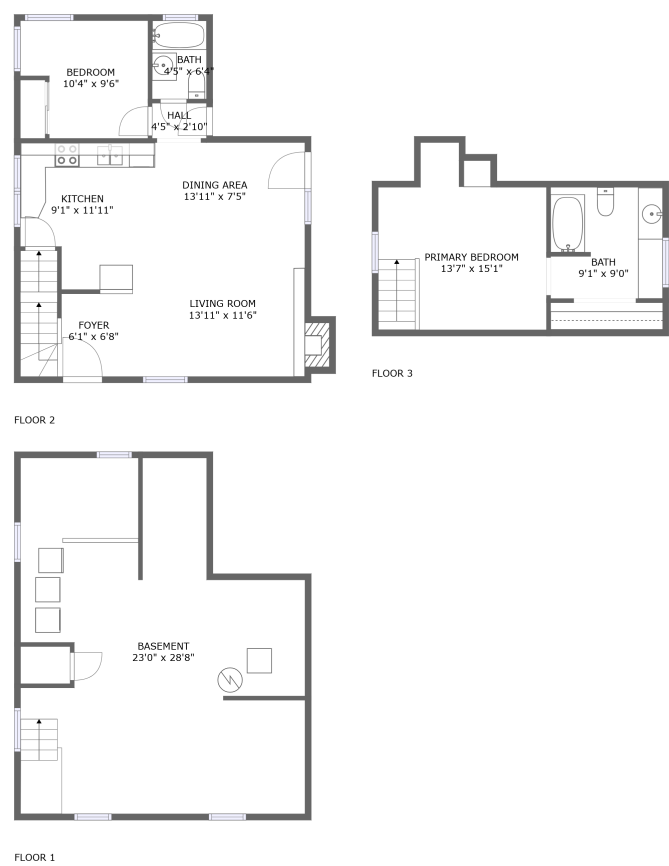



Home report

445 State St,Spearfish,SD,US




Property summary




0

Garages




2

Bedrooms



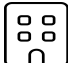
2

Bathrooms




0

Half baths




3

Floors



900

Gross living area sqft

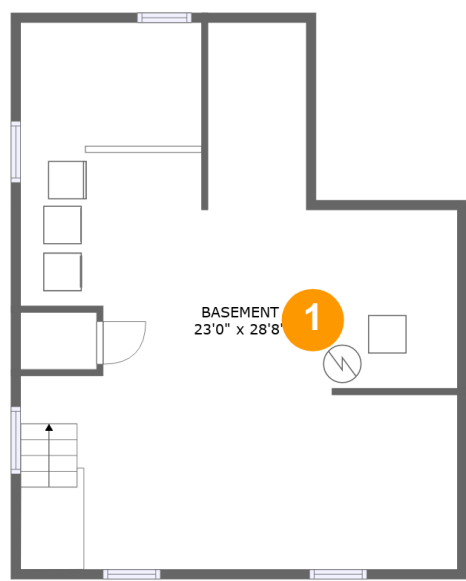


1,600

Total sqft

Home report

445 State St,Spearfish,SD,US



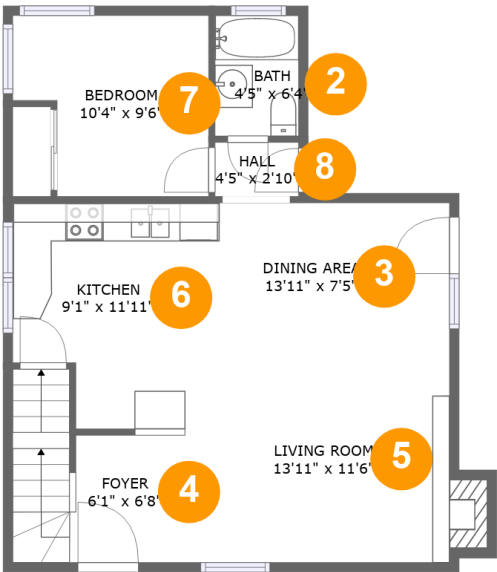
Room dimensions

Floor 1 Total sqft: 635 Living area: 0

#		Dimensions	sqft	Counted as living area
1	Basement	23'0" x 28'8"	560 sq. ft	No

Home report

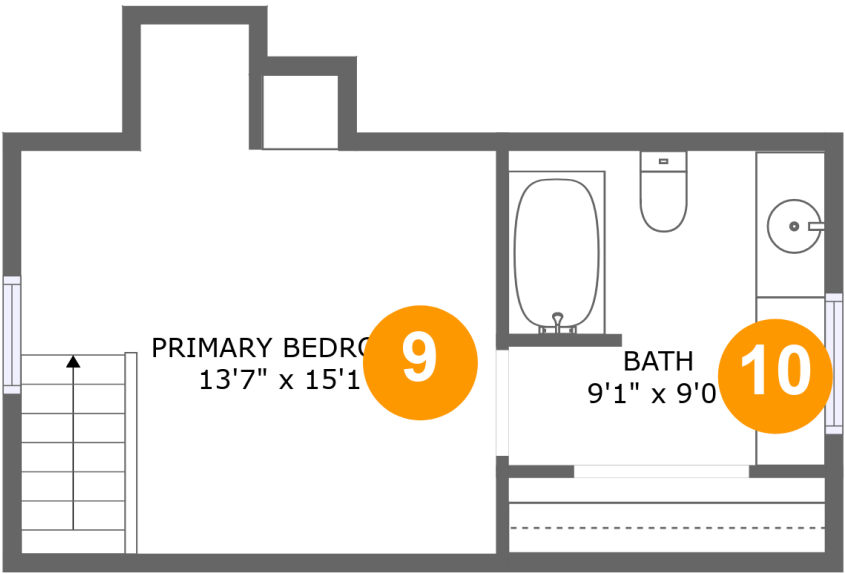
445 State St,Spearfish,SD,US



Room dimensions

Floor 2 Total sqft: 644 Living area: 635

#		Dimensions	sqft	Counted as living area
2	Bath	4'5" x 6'4"	28 sq. ft	Yes
3	Dining Area	13'11" x 7'5"	103 sq. ft	Yes
4	Foyer	6'1" x 6'8"	70 sq. ft	Yes
5	Living Room	13'11" x 11'6"	167 sq. ft	Yes
6	Kitchen	9'1" x 11'11"	97 sq. ft	Yes
7	Bedroom	10'4" x 9'6"	86 sq. ft	Yes
8	Hall	4'5" x 2'10"	12 sq. ft	Yes



Room dimensions

Floor 3 Total sqft: 321 Living area: 265

#		Dimensions	sqft	Counted as living area
9	Primary Bedroom	13'7" x 15'1"	142 sq. ft	Yes
10	Bath	9'1" x 9'0"	71 sq. ft	Yes

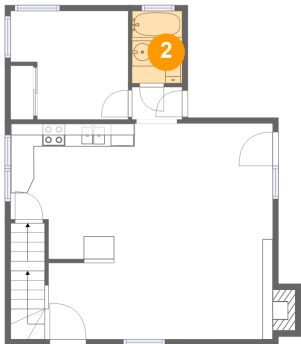
1 Floor 1 - Basement



Dimensions: 23'0" x 28'8"
Area: 560 sq. ft
Counted as living area: No

Heated: Yes
Finished: No
Enclosed: Yes
Contiguous: Yes
Permitted: Yes
Wet space: No
Addition: No
Conversion: No

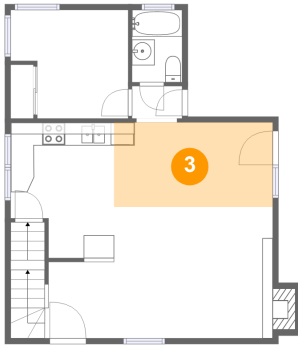
2 Floor 2 - Bath



Dimensions: 4'5" x 6'4"
Area: 28 sq. ft
Counted as living area: Yes

Heated: Yes
Finished: Yes
Enclosed: Yes
Contiguous: Yes
Permitted: Yes
Wet space: Yes
Addition: No
Conversion: No

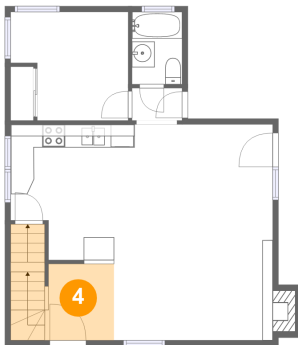
3 Floor 2 - Dining Area



Dimensions: 13'11" x 7'5"
Area: 103 sq. ft
Counted as living area: Yes

Heated: Yes
Finished: Yes
Enclosed: Yes
Contiguous: Yes
Permitted: Yes
Wet space: No
Addition: No
Conversion: No

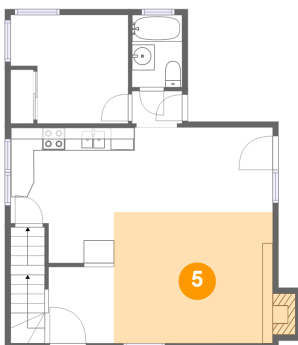
4 Floor 2 - Foyer



Dimensions: 6'1" x 6'8"
Area: 70 sq. ft
Counted as living area: Yes

Heated: Yes
Finished: Yes
Enclosed: Yes
Contiguous: Yes
Permitted: Yes
Wet space: No
Addition: No
Conversion: No

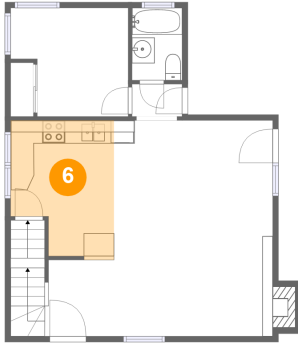
5 Floor 2 - Living Room



Dimensions: 13'11" x 11'6"
Area: 167 sq. ft
Counted as living area: Yes

Heated: Yes
Finished: Yes
Enclosed: Yes
Contiguous: Yes
Permitted: Yes
Wet space: No
Addition: No
Conversion: No

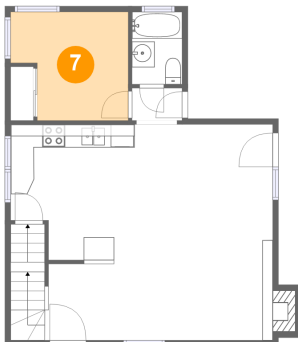
6 Floor 2 - Kitchen



Dimensions: 9'1" x 11'11"
Area: 97 sq. ft
Counted as living area: Yes

Heated: Yes
Finished: Yes
Enclosed: Yes
Contiguous: Yes
Permitted: Yes
Wet space: No
Addition: No
Conversion: No

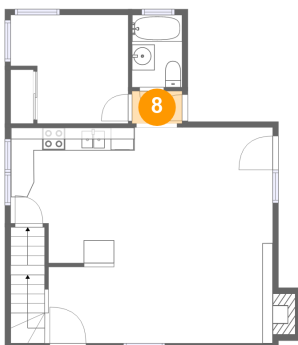
7 Floor 2 - Bedroom



Dimensions: 10'4" x 9'6"
Area: 86 sq. ft
Counted as living area: Yes

Heated: Yes
Finished: Yes
Enclosed: Yes
Contiguous: Yes
Permitted: Yes
Wet space: No
Addition: No
Conversion: No

8 Floor 2 - Hall



Dimensions: 4'5" x 2'10"
Area: 12 sq. ft
Counted as living area: Yes

Heated: Yes
Finished: Yes
Enclosed: Yes
Contiguous: Yes
Permitted: Yes
Wet space: No
Addition: No
Conversion: No

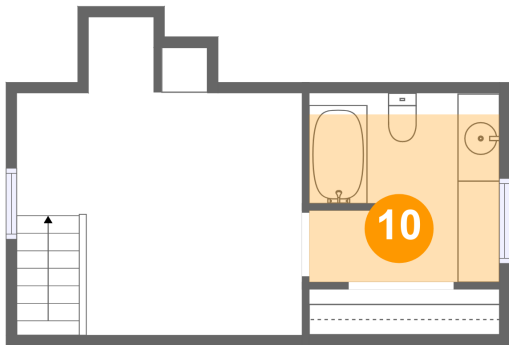
9 Floor 3 - Primary Bedroom



Dimensions: 13'7" x 15'1"
Area: 142 sq. ft
Counted as living area: Yes

Heated: Yes
Finished: Yes
Enclosed: Yes
Contiguous: Yes
Permitted: Yes
Wet space: No
Addition: No
Conversion: No

10 Floor 3 - Bath



Dimensions: 9'1" x 9'0"
Area: 71 sq. ft
Counted as living area: Yes

Heated: Yes
Finished: Yes
Enclosed: Yes
Contiguous: Yes
Permitted: Yes
Wet space: Yes
Addition: No
Conversion: No