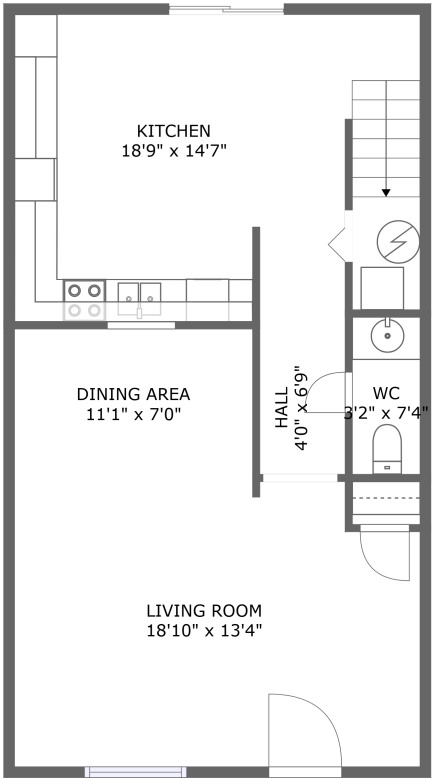
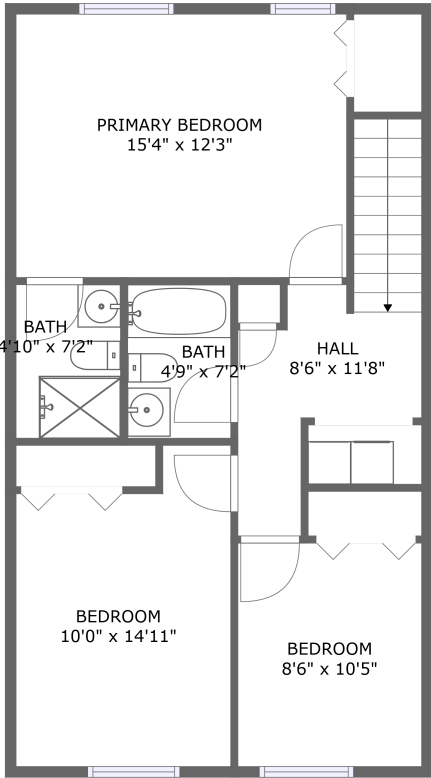


907 Lora Lane, McBryde, Blacksburg, Montgomery
County, Virginia, United States, 24060



FLOOR 1



FLOOR 2

Property summary



0
Garages



3
Bedrooms



2
Bathrooms



1
Half baths



2
Floors

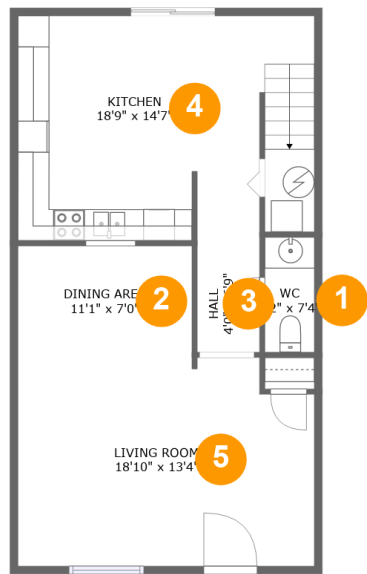


1,390
Gross living
area sqft



1,390
Total sqft

907 Lora Lane, McBryde, Blacksburg, Montgomery County, Virginia, United States, 24060



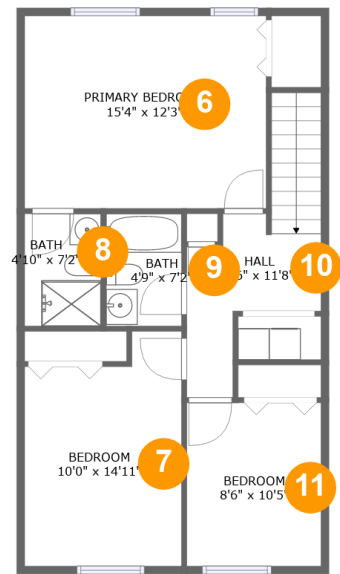
Room dimensions

Floor 1

Total sqft: 695 Living area: 695

#		Dimensions	sqft	Counted as living area
1	WC	3'2" x 7'4"	23 sq. ft	Yes
2	Dining Area	11'1" x 7'0"	77 sq. ft	Yes
3	Hall	4'0" x 6'9"	27 sq. ft	Yes
4	Kitchen	18'9" x 14'7"	265 sq. ft	Yes
5	Living Room	18'10" x 13'4"	242 sq. ft	Yes

907 Lora Lane, McBryde, Blacksburg, Montgomery
County, Virginia, United States, 24060



Room dimensions

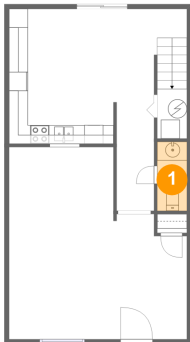
Floor 2

Total sqft: 695 Living area: 695

#		Dimensions	sqft	Counted as living area
6	Primary Bedroom	15'4" x 12'3"	188 sq. ft	Yes
7	Bedroom	10'0" x 14'11"	133 sq. ft	Yes
8	Bath	4'10" x 7'2"	35 sq. ft	Yes
9	Bath	4'9" x 7'2"	34 sq. ft	Yes
10	Hall	8'6" x 11'8"	88 sq. ft	Yes
11	Bedroom	8'6" x 10'5"	89 sq. ft	Yes

907 Lora Lane, McBryde, Blacksburg, Montgomery
County, Virginia, United States, 24060

1 Floor 1 - WC



Dimensions: 3'2" x 7'4"
Area: 23 sq. ft
Counted as living area: Yes

Heated: Yes
Finished: Yes
Enclosed: Yes
Contiguous: Yes
Permitted: Yes
Wet space: Yes
Addition: No
Conversion: No

2 Floor 1 - Dining Area

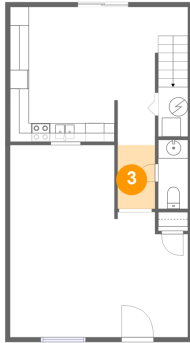


Dimensions: 11'1" x 7'0"
Area: 77 sq. ft
Counted as living area: Yes

Heated: Yes
Finished: Yes
Enclosed: Yes
Contiguous: Yes
Permitted: Yes
Wet space: No
Addition: No
Conversion: No

907 Lora Lane, McBryde, Blacksburg, Montgomery County, Virginia, United States, 24060

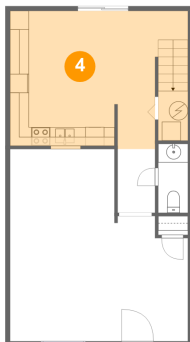
3 Floor 1 - Hall



Dimensions: 4'0" x 6'9"
Area: 27 sq. ft
Counted as living area: Yes

Heated: Yes
Finished: Yes
Enclosed: Yes
Contiguous: Yes
Permitted: Yes
Wet space: No
Addition: No
Conversion: No

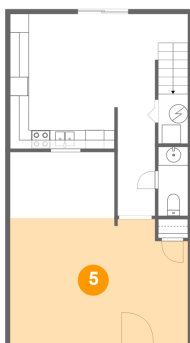
4 Floor 1 - Kitchen



Dimensions: 18'9" x 14'7"
Area: 265 sq. ft
Counted as living area: Yes

Heated: Yes
Finished: Yes
Enclosed: Yes
Contiguous: Yes
Permitted: Yes
Wet space: No
Addition: No
Conversion: No

5 Floor 1 - Living Room

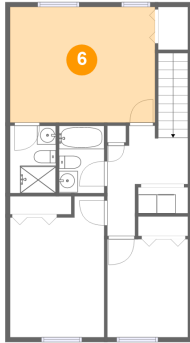


Dimensions: 18'10" x 13'4"
Area: 242 sq. ft
Counted as living area: Yes

Heated: Yes
Finished: Yes
Enclosed: Yes
Contiguous: Yes
Permitted: Yes
Wet space: No
Addition: No
Conversion: No

907 Lora Lane, McBryde, Blacksburg, Montgomery
County, Virginia, United States, 24060

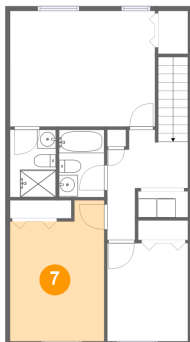
6 Floor 2 - Primary Bedroom



Dimensions: 15'4" x 12'3"
Area: 188 sq. ft
Counted as living area: Yes

Heated: Yes
Finished: Yes
Enclosed: Yes
Contiguous: Yes
Permitted: Yes
Wet space: No
Addition: No
Conversion: No

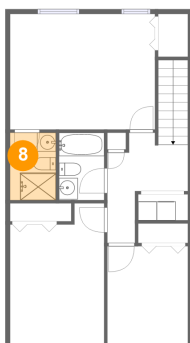
7 Floor 2 - Bedroom



Dimensions: 10'0" x 14'11"
Area: 133 sq. ft
Counted as living area: Yes

Heated: Yes
Finished: Yes
Enclosed: Yes
Contiguous: Yes
Permitted: Yes
Wet space: No
Addition: No
Conversion: No

8 Floor 2 - Bath

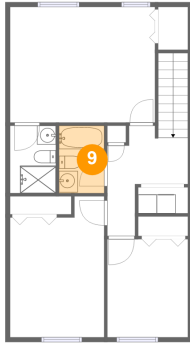


Dimensions: 4'10" x 7'2"
Area: 35 sq. ft
Counted as living area: Yes

Heated: Yes
Finished: Yes
Enclosed: Yes
Contiguous: Yes
Permitted: Yes
Wet space: Yes
Addition: No
Conversion: No

907 Lora Lane, McBryde, Blacksburg, Montgomery County, Virginia, United States, 24060

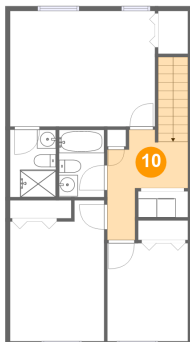
9 Floor 2 - Bath



Dimensions: 4'9" x 7'2"
Area: 34 sq. ft
Counted as living area: Yes

Heated: Yes
Finished: Yes
Enclosed: Yes
Contiguous: Yes
Permitted: Yes
Wet space: Yes
Addition: No
Conversion: No

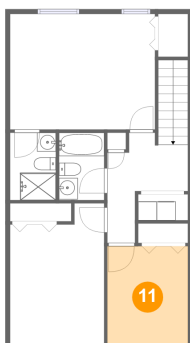
10 Floor 2 - Hall



Dimensions: 8'6" x 11'8"
Area: 88 sq. ft
Counted as living area: Yes

Heated: Yes
Finished: Yes
Enclosed: Yes
Contiguous: Yes
Permitted: Yes
Wet space: No
Addition: No
Conversion: No

11 Floor 2 - Bedroom



Dimensions: 8'6" x 10'5"
Area: 89 sq. ft
Counted as living area: Yes

Heated: Yes
Finished: Yes
Enclosed: Yes
Contiguous: Yes
Permitted: Yes
Wet space: No
Addition: No
Conversion: No