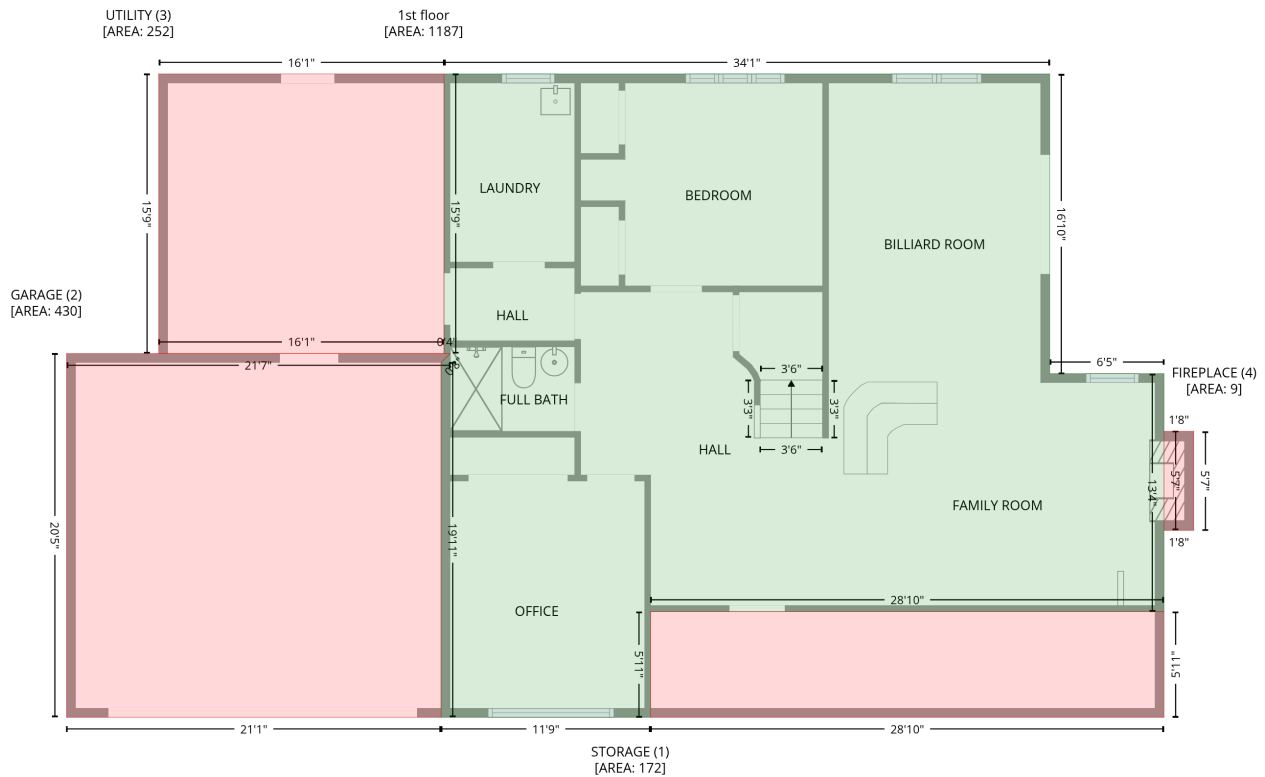


1945 10th Side Rd, Alliston, ON, L0G 1W0, Alliston Canada

Gross Living Area: 3065 sq. ft

Level 1

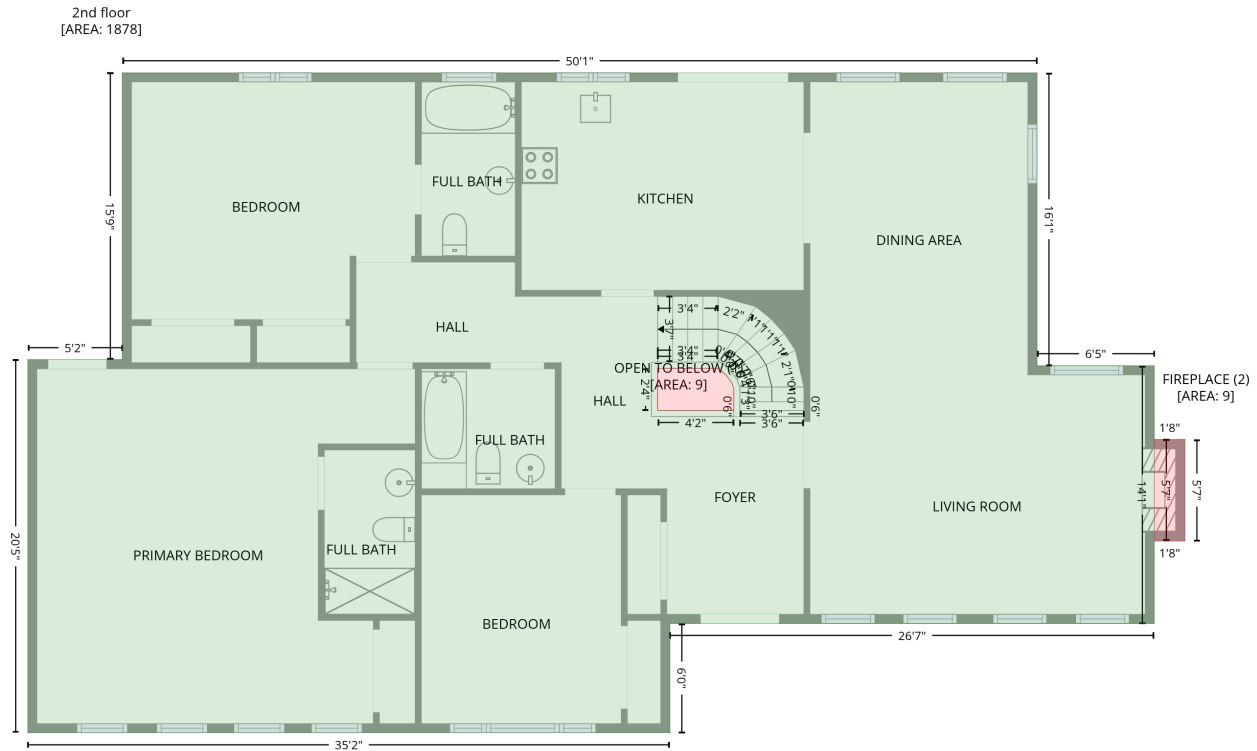


Space	Area (sq. ft)	Calculation
1st floor (Living area)	1187	$-\left((510.3 + 510.3) * (282.6 - 484.7) + (510.3 + 587.4) * (484.7 - 484.7) + (587.4 + 587.4) * (484.7 - 645.1) + (587.4 + 241) * (645.1 - 645.1) + (241 + 241) * (645.1 - 716.4) + (241 + 99.6) * (716.4 - 716.4) + (99.6 + 99.6) * (716.4 - 477.2) + (99.6 + 105.6) * (477.2 - 471.2) + (105.6 + 101.6) * (471.2 - 471.2) + (101.6 + 101.6) * (471.2 - 282.6) + (101.6 + 510.3) * (282.6 - 282.6)\right) * 0.5 * 0.00694$
STORAGE (Non-living area)	172	$-\left((587.4 + 587.4) * (645.1 - 716.4) + (587.4 + 241) * (716.4 - 716.4) + (241 + 241) * (716.4 - 645.1) + (241 + 587.4) * (645.1 - 645.1)\right) * 0.5 * 0.00694$
GARAGE (Non-living area)	430	$-\left((105.6 + 99.6) * (471.2 - 477.2) + (99.6 + 99.6) * (477.2 - 716.4) + (99.6 + -153.2) * (716.4 - 716.4) + (-153.2 + -153.2) * (716.4 - 471.2) + (-153.2 + 105.6) * (471.2 - 471.2)\right) * 0.5 * 0.00694$
UTILITY (Non-living area)	252	$-\left((101.6 + 101.6) * (282.6 - 471.2) + (101.6 + -91) * (471.2 - 471.2) + (-91 + -91) * (471.2 - 282.6) + (-91 + 101.6) * (282.6 - 282.6)\right) * 0.5 * 0.00694$
FIREPLACE (Non-living area)	9	$-\left((607.6 + 607.6) * (523.6 - 590.3) + (607.6 + 587.4) * (590.3 - 590.3) + (587.4 + 587.4) * (590.3 - 523.6) + (587.4 + 607.6) * (523.6 - 523.6)\right) * 0.5 * 0.00694$

1945 10th Side Rd, Alliston, ON, L0G 1W0, Alliston Canada

Gross Living Area: 3065 sq. ft

Level 2



Space	Area (sq. ft)	Calculation
2nd floor (Living area)	1878	Coordinate Polygon Area Algorithm using inches $-((510.3 + 510.3) * (282.6 - 475.1) + (510.3 + 587.4) * (475.1 - 475.1) + (587.4 + 587.4) * (475.1 - 644.5) + (587.4 + 268.9) * (644.5 - 644.5) + (268.9 + 268.9) * (644.5 - 716.4) + (268.9 + -153.2) * (716.4 - 716.4) + (-153.2 + -153.2) * (716.4 - 471.2) + (-153.2 + -91) * (471.2 - 471.2) + (-91 + -91) * (471.2 - 282.6) + (-91 + 510.3) * (282.6 - 282.6)) * 0.5 * 0.00694 + -((300.7 + 260.8) * (476.8 - 476.8) + (260.8 + 260.8) * (476.8 - 504.5) + (260.8 + 310.9) * (504.5 - 504.5) + (310.9 + 310.9) * (504.5 - 489.9) + (310.9 + 309.4) * (489.9 - 485.9) + (309.4 + 306) * (485.9 - 481.4) + (306 + 300.7) * (481.4 - 476.8)) * 0.5 * 0.00694$
OPEN TO BELOW (Non-living area)	9	$-((300.7 + 306) * (476.8 - 481.4) + (306 + 309.4) * (481.4 - 485.9) + (309.4 + 310.9) * (485.9 - 489.9) + (310.9 + 310.9) * (489.9 - 504.5) + (310.9 + 260.8) * (504.5 - 504.5) + (260.8 + 260.8) * (504.5 - 476.8) + (260.8 + 300.7) * (476.8 - 476.8)) * 0.5 * 0.00694$
FIREPLACE (Non-living area)	9	$-((607.6 + 607.6) * (523.6 - 590.3) + (607.6 + 587.4) * (590.3 - 590.3) + (587.4 + 587.4) * (590.3 - 523.6) + (587.4 + 607.6) * (523.6 - 523.6)) * 0.5 * 0.00694$