


# Home report

## 177 Stephens Drive, Troutville, Botetourt County, Virginia, United States, 24175



### Property summary

 **1** Garages

 **3** Bedrooms

 **2** Bathrooms

 **1** Half baths

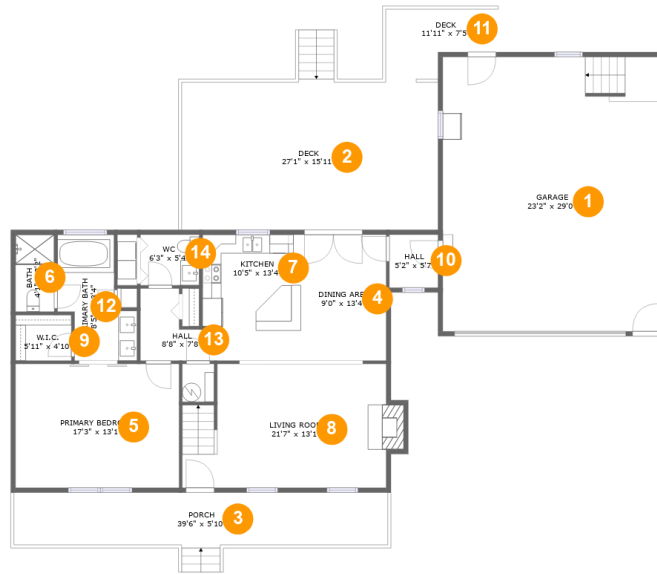
 **2** Floors

 **2,193** Gross living area sqft

 **3,773** Total sqft

Home report

177 Stephens Drive, Troutville, Botetourt County, Virginia, United States, 24175



Room dimensions

Floor 1

Total sqft: 2598 Living area: 1150

#		Dimensions	sqft	Counted as living area
1	Garage	23'2" x 29'0"	673 sq. ft	No
2	Deck	27'1" x 15'11"	425 sq. ft	No
3	Porch	39'6" x 5'10"	220 sq. ft	No
4	Dining Area	9'0" x 13'4"	120 sq. ft	Yes
5	Primary Bedroom	17'3" x 13'1"	226 sq. ft	Yes
6	Bath	4'1" x 8'2"	33 sq. ft	Yes
7	Kitchen	10'5" x 13'4"	131 sq. ft	Yes
8	Living Room	21'7" x 13'1"	274 sq. ft	Yes
9	W.I.C.	5'11" x 4'10"	29 sq. ft	Yes
10	Hall	5'2" x 5'7"	29 sq. ft	Yes
11	Deck	11'11" x 7'5"	70 sq. ft	No

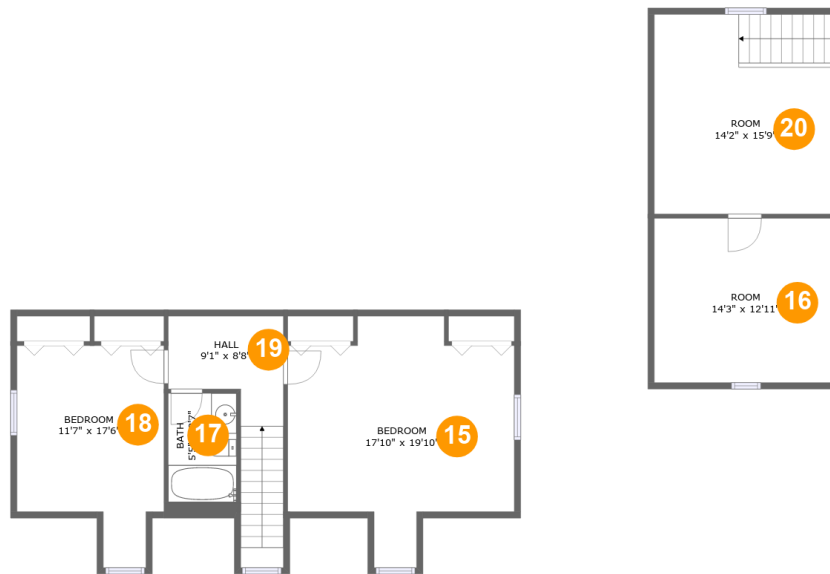
Home report

**177 Stephens Drive, Troutville, Botetourt County, Virginia, United States, 24175**

#		Dimensions	sqft	Counted as living area
12	Primary Bath	8'5" x 13'4"	83 sq. ft	Yes
13	Hall	8'8" x 7'8"	46 sq. ft	Yes
14	WC	6'3" x 5'4"	33 sq. ft	Yes

## Home report

177 Stephens Drive, Troutville, Botetourt County, Virginia, United States, 24175



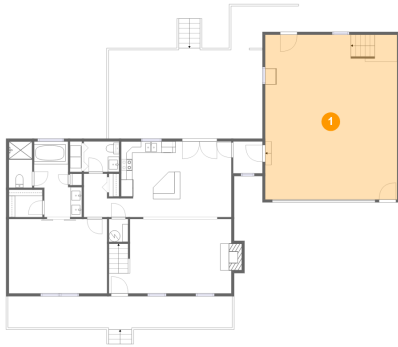
## Room dimensions

Floor 2

Total sqft: 1175 Living area: 1043

#		Dimensions	sqft	Counted as living area
15	Bedroom	17'10" x 19'10"	256 sq. ft	Yes
16	Room	14'3" x 12'11"	160 sq. ft	Yes
17	Bath	5'5" x 8'7"	46 sq. ft	Yes
18	Bedroom	11'7" x 17'6"	163 sq. ft	Yes
19	Hall	9'1" x 8'8"	96 sq. ft	Yes
20	Room	14'2" x 15'9"	198 sq. ft	Yes

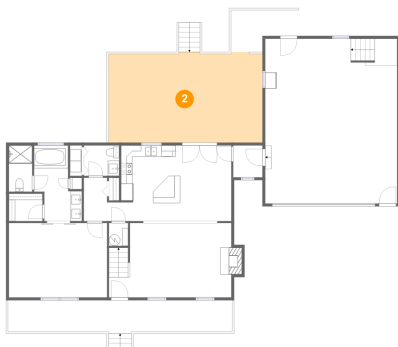
## 1 Floor 1 - Garage



Dimensions: 23'2" x 29'0"  
Area: 673 sq. ft  
Counted as living area: No

Heated: No  
Finished: No  
Enclosed: Yes  
Contiguous: Yes  
Permitted: Yes  
Wet space: No  
Addition: No  
Conversion: No

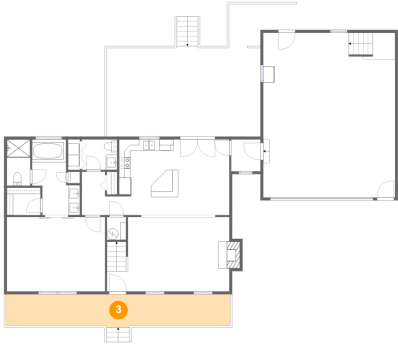
## 2 Floor 1 - Deck



Dimensions: 27'1" x 15'11"  
Area: 425 sq. ft  
Counted as living area: No

Heated: No  
Finished: Yes  
Enclosed: No  
Contiguous: Yes  
Permitted: Yes  
Wet space: No  
Addition: No  
Conversion: No

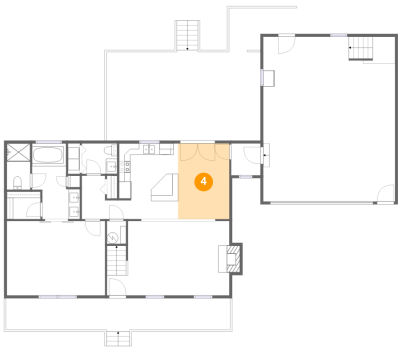
### 3 Floor 1 - Porch



Dimensions: 39'6" x 5'10"  
Area: 220 sq. ft  
Counted as living area: No

Heated: No  
Finished: Yes  
Enclosed: No  
Contiguous: Yes  
Permitted: Yes  
Wet space: No  
Addition: No  
Conversion: No

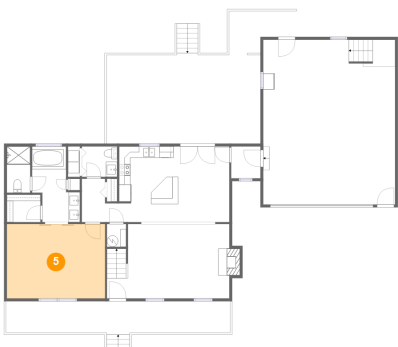
### 4 Floor 1 - Dining Area



Dimensions: 9'0" x 13'4"  
Area: 120 sq. ft  
Counted as living area: Yes

Heated: Yes  
Finished: Yes  
Enclosed: Yes  
Contiguous: Yes  
Permitted: Yes  
Wet space: No  
Addition: No  
Conversion: No

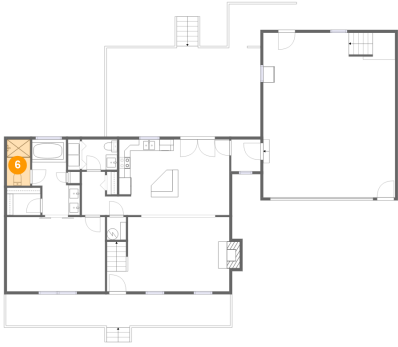
### 5 Floor 1 - Primary Bedroom



Dimensions: 17'3" x 13'1"  
Area: 226 sq. ft  
Counted as living area: Yes

Heated: Yes  
Finished: Yes  
Enclosed: Yes  
Contiguous: Yes  
Permitted: Yes  
Wet space: No  
Addition: No  
Conversion: No

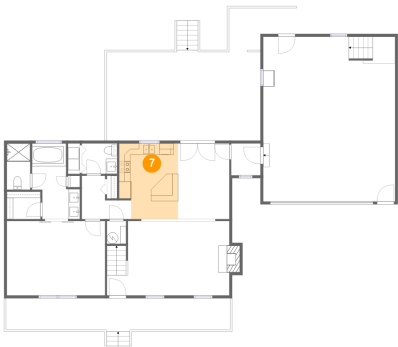
**6** Floor 1 - Bath



Dimensions: 4'1" x 8'2"  
Area: 33 sq. ft  
Counted as living area: Yes

Heated: Yes  
Finished: Yes  
Enclosed: Yes  
Contiguous: Yes  
Permitted: Yes  
Wet space: Yes  
Addition: No  
Conversion: No

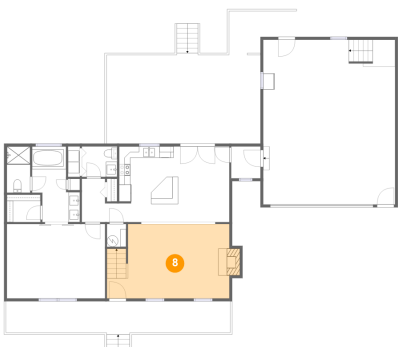
**7** Floor 1 - Kitchen



Dimensions: 10'5" x 13'4"  
Area: 131 sq. ft  
Counted as living area: Yes

Heated: Yes  
Finished: Yes  
Enclosed: Yes  
Contiguous: Yes  
Permitted: Yes  
Wet space: No  
Addition: No  
Conversion: No

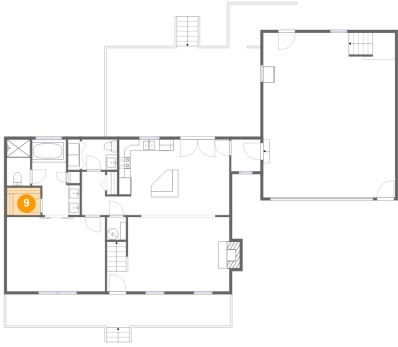
**8** Floor 1 - Living Room



Dimensions: 21'7" x 13'1"  
Area: 274 sq. ft  
Counted as living area: Yes

Heated: Yes  
Finished: Yes  
Enclosed: Yes  
Contiguous: Yes  
Permitted: Yes  
Wet space: No  
Addition: No  
Conversion: No

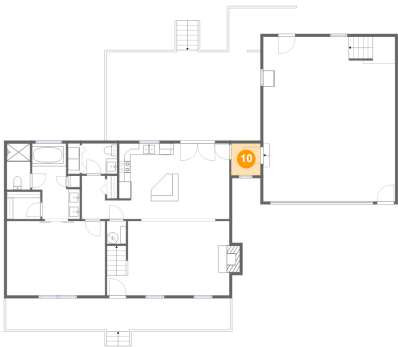
**9** Floor 1 - W.I.C.



Dimensions: 5'11" x 4'10"  
Area: 29 sq. ft  
Counted as living area: Yes

Heated: Yes  
Finished: Yes  
Enclosed: Yes  
Contiguous: Yes  
Permitted: Yes  
Wet space: No  
Addition: No  
Conversion: No

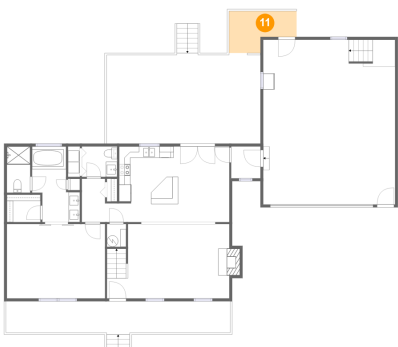
**10** Floor 1 - Hall



Dimensions: 5'2" x 5'7"  
Area: 29 sq. ft  
Counted as living area: Yes

Heated: Yes  
Finished: Yes  
Enclosed: Yes  
Contiguous: Yes  
Permitted: Yes  
Wet space: No  
Addition: No  
Conversion: No

**11** Floor 1 - Deck

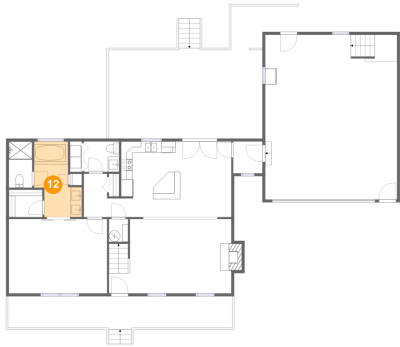


Dimensions: 11'11" x 7'5"  
Area: 70 sq. ft  
Counted as living area: No

Heated: No  
Finished: Yes  
Enclosed: No  
Contiguous: Yes  
Permitted: Yes  
Wet space: No  
Addition: No  
Conversion: No



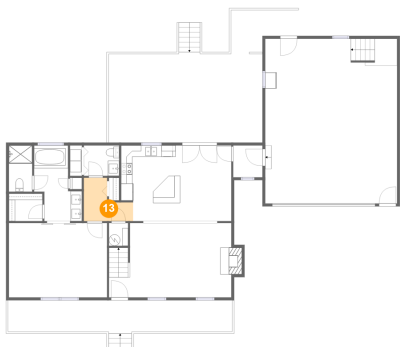
### 12 Floor 1 - Primary Bath



Dimensions: 8'5" x 13'4"  
Area: 83 sq. ft  
Counted as living area: Yes

Heated: Yes  
Finished: Yes  
Enclosed: Yes  
Contiguous: Yes  
Permitted: Yes  
Wet space: Yes  
Addition: No  
Conversion: No

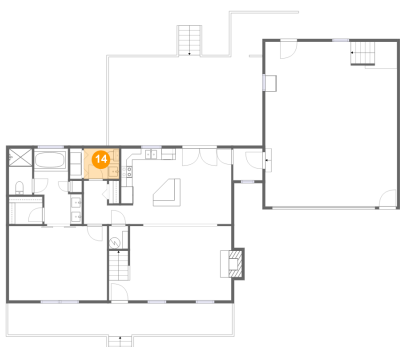
### 13 Floor 1 - Hall



Dimensions: 8'8" x 7'8"  
Area: 46 sq. ft  
Counted as living area: Yes

Heated: Yes  
Finished: Yes  
Enclosed: Yes  
Contiguous: Yes  
Permitted: Yes  
Wet space: No  
Addition: No  
Conversion: No

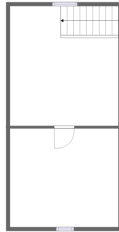
### 14 Floor 1 - WC



Dimensions: 6'3" x 5'4"  
Area: 33 sq. ft  
Counted as living area: Yes

Heated: Yes  
Finished: Yes  
Enclosed: Yes  
Contiguous: Yes  
Permitted: Yes  
Wet space: Yes  
Addition: No  
Conversion: No

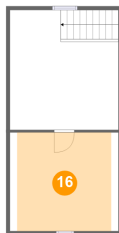
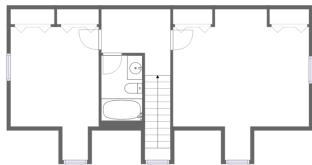
**15** Floor 2 - Bedroom



Dimensions: 17'10" x 19'10"  
Area: 256 sq. ft  
Counted as living area: Yes

Heated: Yes  
Finished: Yes  
Enclosed: Yes  
Contiguous: Yes  
Permitted: Yes  
Wet space: No  
Addition: No  
Conversion: No

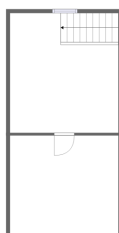
**16** Floor 2 - Room



Dimensions: 14'3" x 12'11"  
Area: 160 sq. ft  
Counted as living area: Yes

Heated: Yes  
Finished: Yes  
Enclosed: Yes  
Contiguous: Yes  
Permitted: Yes  
Wet space: No  
Addition: No  
Conversion: No

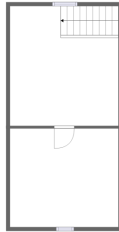
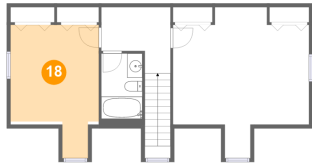
**17** Floor 2 - Bath



Dimensions: 5'5" x 8'7"  
Area: 46 sq. ft  
Counted as living area: Yes

Heated: Yes  
Finished: Yes  
Enclosed: Yes  
Contiguous: Yes  
Permitted: Yes  
Wet space: Yes  
Addition: No  
Conversion: No

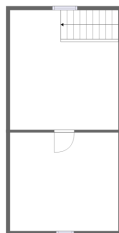
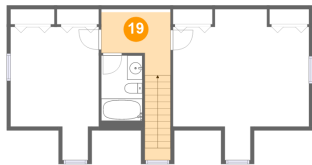
**18** Floor 2 - Bedroom



Dimensions: 11'7" x 17'6"  
Area: 163 sq. ft  
Counted as living area: Yes

Heated: Yes  
Finished: Yes  
Enclosed: Yes  
Contiguous: Yes  
Permitted: Yes  
Wet space: No  
Addition: No  
Conversion: No

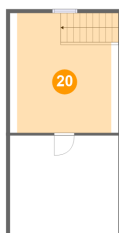
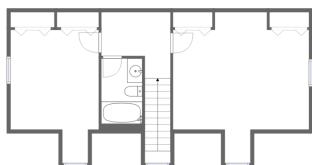
**19** Floor 2 - Hall



Dimensions: 9'1" x 8'8"  
Area: 96 sq. ft  
Counted as living area: Yes

Heated: Yes  
Finished: Yes  
Enclosed: Yes  
Contiguous: Yes  
Permitted: Yes  
Wet space: No  
Addition: No  
Conversion: No

**20** Floor 2 - Room



Dimensions: 14'2" x 15'9"  
Area: 198 sq. ft  
Counted as living area: Yes

Heated: Yes  
Finished: Yes  
Enclosed: Yes  
Contiguous: Yes  
Permitted: Yes  
Wet space: No  
Addition: No  
Conversion: No