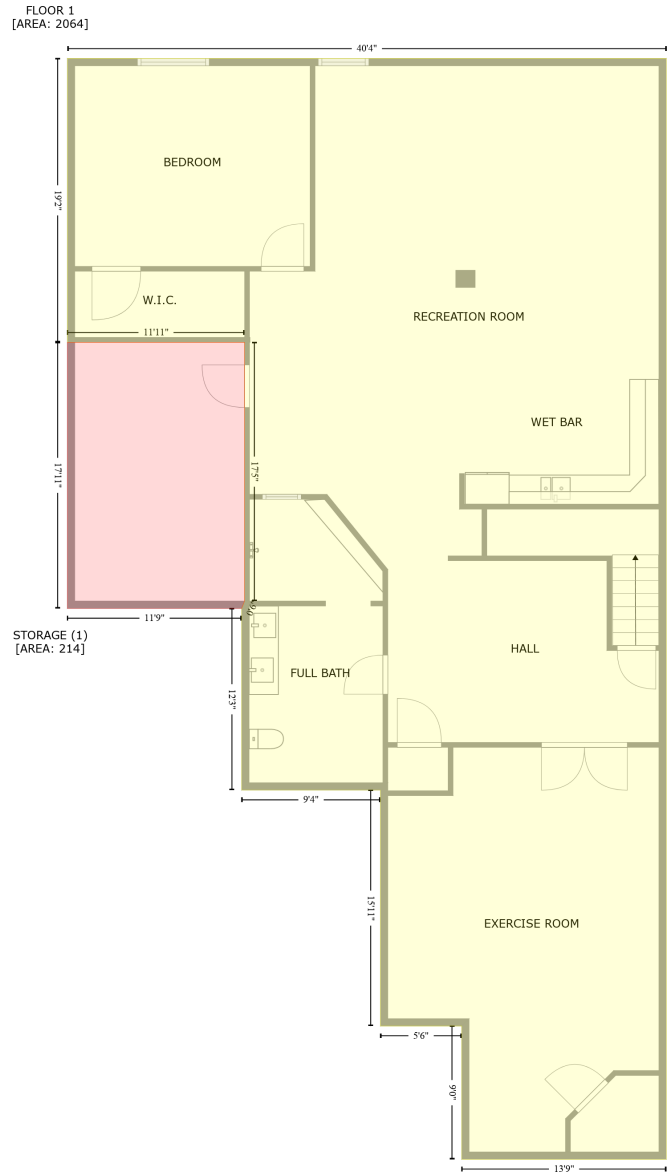


# 16034 Columbine St, Thornton, CO, US

Gross Living Area: 2298 sq. ft



Space	Area (sq. ft)	Calculation <small>Coordinate Polygon Area Algorithm using inches</small>
FLOOR 1 (Living area)	2064	$-\left((595.7 + 595.7) * (91.2 - 982) + (595.7 + 430.2) * (982 - 982) + (430.2 + 430.2) * (982 - 874.2) + (430.2 + 364.5) * (874.2 - 874.2) + (364.5 + 364.5) * (874.2 - 683.3) + (364.5 + 252.3) * (683.3 - 683.3) + (252.3 + 252.3) * (683.3 - 536.3) + (252.3 + 254.6) * (536.3 - 530.3) + (254.6 + 254.6) * (530.3 - 321) + (254.6 + 111.3) * (321 - 321) + (111.3 + 111.3) * (321 - 91.2) + (111.3 + 595.7) * (91.2 - 91.2)\right) * 0.5 * 0.00694$
STORAGE	214	$-\left((254.6 + 254.6) * (321 - 530.3) + (254.6 + 252.3) * (530.3 - 536.3) + (252.3 + 111.3) * (536.3 - 530.3)\right) * 0.5 * 0.00694$

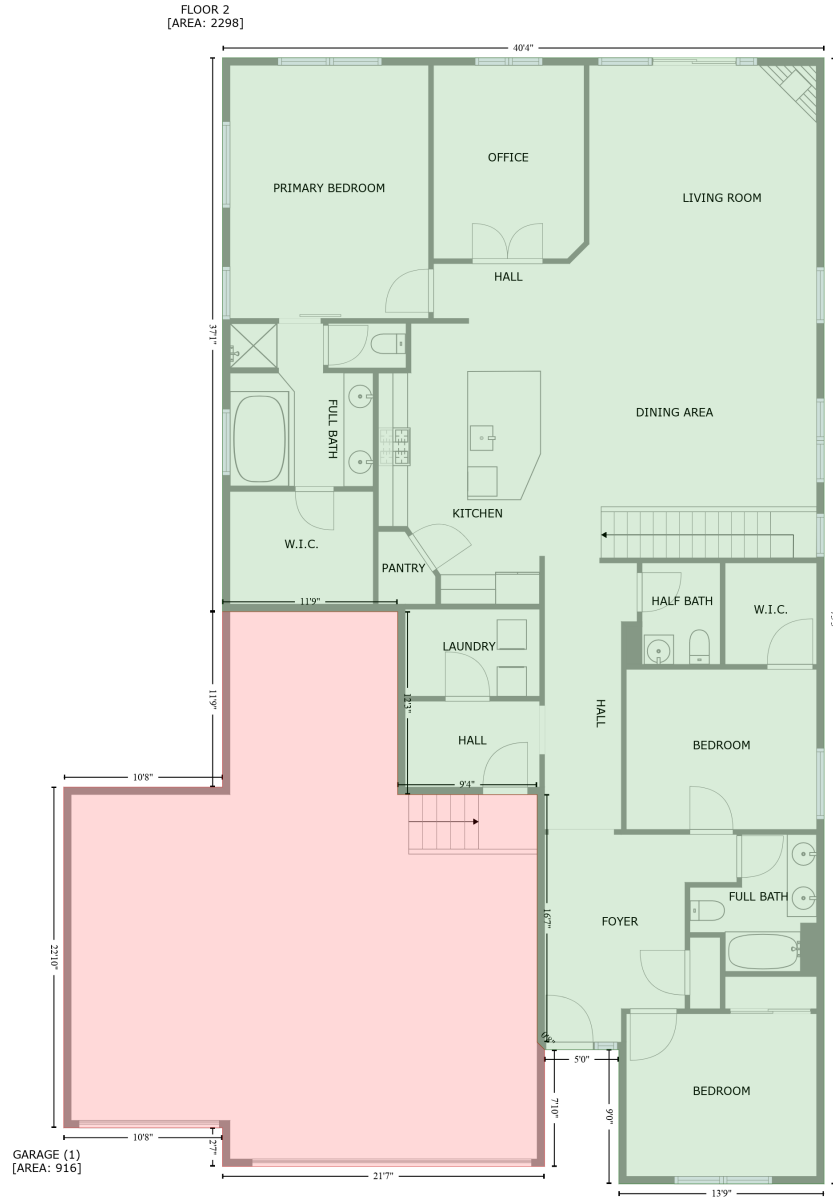
# 16034 Columbine St, Thornton, CO, US

Gross Living Area: 2298 sq. ft

Space	Area (sq. ft)	Calculation <small>Coordinate Polygon Area Algorithm using inches</small>
(Non-living area)		$536.3 + (111.3 + 111.3) * (536.3 - 321) + (111.3 + 254.6) * (321 - 321)) * 0.5 * 0.00694$

# 16034 Columbine St, Thornton, CO, US

Gross Living Area: 2298 sq. ft



Space	Area (sq. ft)	Calculation
FLOOR 2 (Living area)	2298	Coordinate Polygon Area Algorithm using inches $-(595.4 + 595.4) * (91.2 - 996.2) + (595.4 + 430.2) * (996.2 - 996.2) + (430.2 + 430.2) * (996.2 - 888.3) + (430.2 + 370.5) * (888.3 - 888.3) + (370.5 + 364.5) * (888.3 - 882.3) + (364.5 + 364.5) * (882.3 - 683.3) + (364.5 + 252.3) * (683.3 - 683.3) + (252.3 + 252.3) * (683.3 - 536.3) + (252.3 + 111.3) * (536.3 - 536.3) + (111.3 + 111.3) * (536.3 - 91.2) + (111.3 + 595.4) * (91.2 - 91.2) * 0.5 * 0.00694$
GARAGE	916	$-(252.3 + 252.3) * (536.3 - 683.3) + (252.3 + 364.5) * (683.3 - 683.3) + (364.5 + 364.5) * (683.3 -$

# 16034 Columbine St, Thornton, CO, US

Gross Living Area: 2298 sq. ft

Space	Area (sq. ft)	Calculation <small>Coordinate Polygon Area Algorithm using inches</small>
(Non-living area)		$882.3 + (364.5 + 370.5) * (882.3 - 888.3) + (370.5 + 370.5) * (888.3 - 982.2) + (370.5 + 111.3) * (982.2 - 982.2) + (111.3 + 111.3) * (982.2 - 951.2) + (111.3 + -16.4) * (951.2 - 951.2) + (-16.4 + -16.4) * (951.2 - 677.3) + (-16.4 + 111.3) * (677.3 - 677.3) + (111.3 + 111.3) * (677.3 - 536.3) + (111.3 + 252.3) * (536.3 - 536.3) * 0.5 * 0.00694$