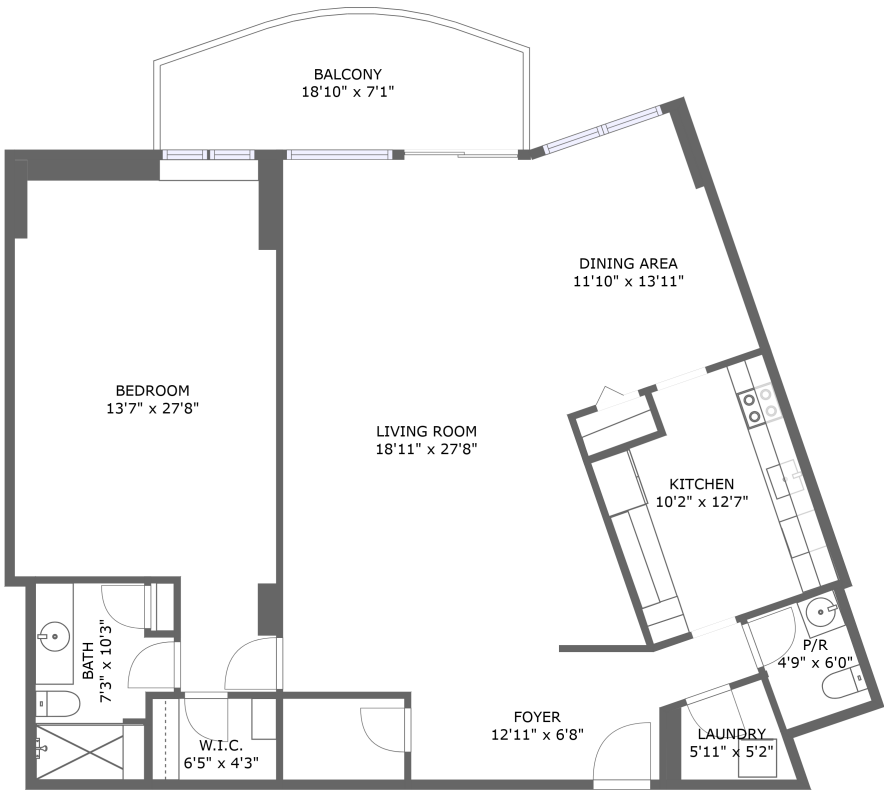


Home report

1 Claridge Drive, Verona, Essex County, New Jersey, United States, 07044, Unit 521



FLOOR 1


Total Area: 1299 sq. ft

Floor 1: 1299 sq. ft

Excluded: Outdoor Balcony 117 sq. ft, Walls: 73 sq. ft

Property summary

 1 Floors

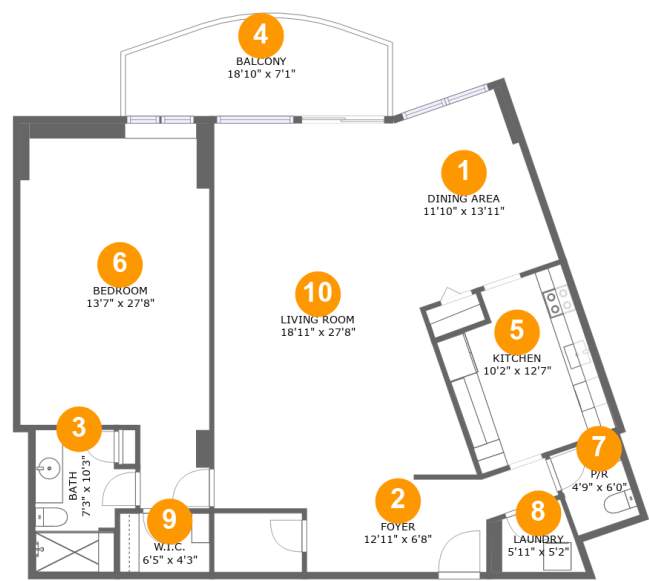
 1 Bedrooms

 1 Bathrooms

 1 Half baths

Home report

1 Claridge Drive, Verona, Essex County, New Jersey, United States, 07044, Unit 521



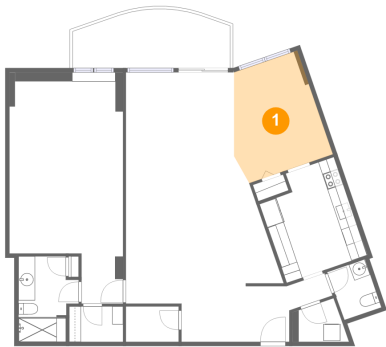
Room dimensions

Floor 1 Total:1299sqft Excluded: 117sqft

#		Max Dimensions	sqft	Included
1	Dining Area	11'10" x 13'11"	131 sq. ft	Yes
2	Foyer	12'11" x 6'8"	94 sq. ft	Yes
3	Bath	7'3" x 10'3"	63 sq. ft	Yes
4	Balcony	18'10" x 7'1"	117 sq. ft	No
5	Kitchen	10'2" x 12'7"	118 sq. ft	Yes
6	Bedroom	13'7" x 27'8"	325 sq. ft	Yes
7	P/R	4'9" x 6'0"	29 sq. ft	Yes
8	Laundry	5'11" x 5'2"	27 sq. ft	Yes
9	W.I.C.	6'5" x 4'3"	27 sq. ft	Yes
10	Living Room	18'11" x 27'8"	402 sq. ft	Yes

1 Claridge Drive, Verona, Essex County, New Jersey, United States, 07044, Unit 521

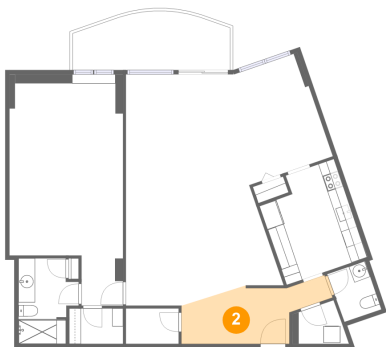
1 Floor 1 - Dining Area



Max Dimensions: 11'10" x 13'11"  
Calculated Area: 131 sq. ft  
Included: Yes

Heated: Yes  
Finished: Yes  
Enclosed: Yes  
Contiguous: Yes  
Permitted: Yes  
Wet space: No  
Addition: No  
Conversion: No

2 Floor 1 - Foyer

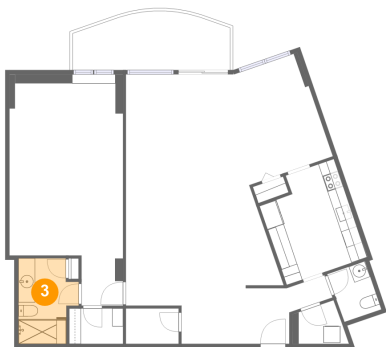


Max Dimensions: 12'11" x 6'8"  
Calculated Area: 94 sq. ft  
Included: Yes

Heated: Yes  
Finished: Yes  
Enclosed: Yes  
Contiguous: Yes  
Permitted: Yes  
Wet space: No  
Addition: No  
Conversion: No

1 Claridge Drive, Verona, Essex County, New Jersey, United States, 07044, Unit 521

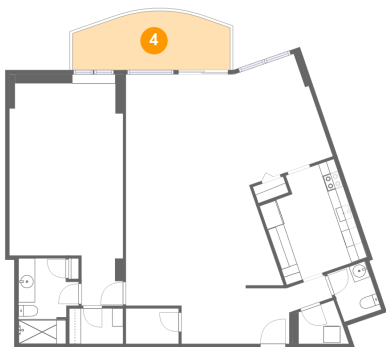
3 Floor 1 - Bath



Max Dimensions: 7'3" x 10'3"  
Calculated Area: 63 sq. ft  
Included: Yes

Heated: Yes  
Finished: Yes  
Enclosed: Yes  
Contiguous: Yes  
Permitted: Yes  
Wet space: Yes  
Addition: No  
Conversion: No

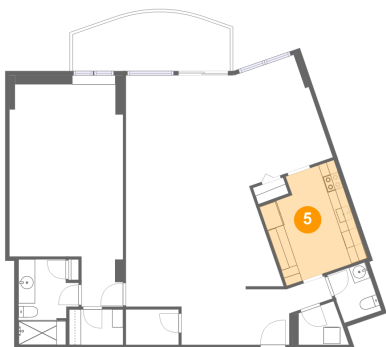
4 Floor 1 - Balcony



Max Dimensions: 18'10" x 7'1"  
Calculated Area: 117 sq. ft  
Included: No

Heated: No  
Finished: Yes  
Enclosed: No  
Contiguous: Yes  
Permitted: Yes  
Wet space: No  
Addition: No  
Conversion: No

5 Floor 1 - Kitchen



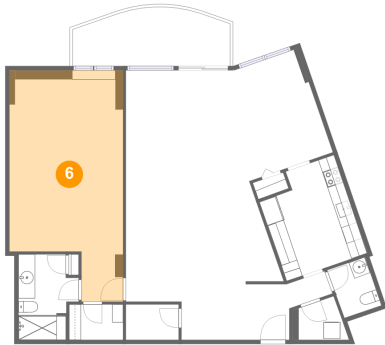
Max Dimensions: 10'2" x 12'7"  
Calculated Area: 118 sq. ft  
Included: Yes

Heated: Yes  
Finished: Yes  
Enclosed: Yes  
Contiguous: Yes  
Permitted: Yes  
Wet space: No  
Addition: No  
Conversion: No

## Home report

1 Claridge Drive, Verona, Essex County, New Jersey, United States, 07044, Unit 521

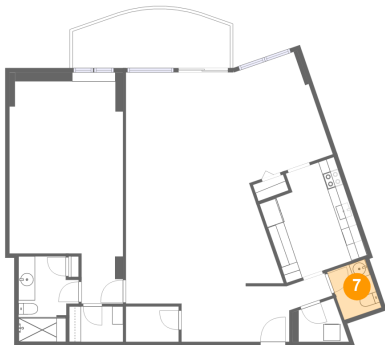
### 6 Floor 1 - Bedroom



Max Dimensions: 13'7" x 27'8"  
Calculated Area: 325 sq. ft  
Included: Yes

Heated: Yes  
Finished: Yes  
Enclosed: Yes  
Contiguous: Yes  
Permitted: Yes  
Wet space: No  
Addition: No  
Conversion: No

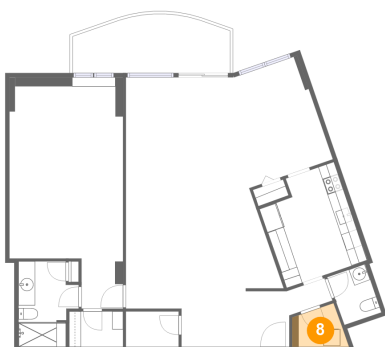
### 7 Floor 1 - P/R



Max Dimensions: 4'9" x 6'0"  
Calculated Area: 29 sq. ft  
Included: Yes

Heated: Yes  
Finished: Yes  
Enclosed: Yes  
Contiguous: Yes  
Permitted: Yes  
Wet space: Yes  
Addition: No  
Conversion: No

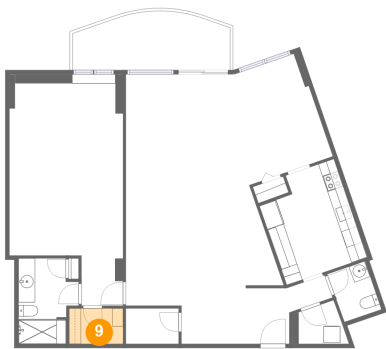
### 8 Floor 1 - Laundry



Max Dimensions: 5'11" x 5'2"  
Calculated Area: 27 sq. ft  
Included: Yes

Heated: Yes  
Finished: Yes  
Enclosed: Yes  
Contiguous: Yes  
Permitted: Yes  
Wet space: No  
Addition: No  
Conversion: No

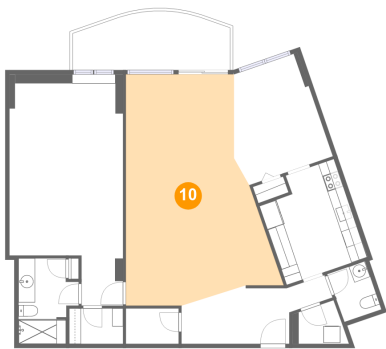
9 Floor 1 - W.I.C.



Max Dimensions: 6'5" x 4'3"  
Calculated Area: 27 sq. ft  
Included: Yes

Heated: Yes  
Finished: Yes  
Enclosed: Yes  
Contiguous: Yes  
Permitted: Yes  
Wet space: No  
Addition: No  
Conversion: No

10 Floor 1 - Living Room



Max Dimensions: 18'11" x 27'8"  
Calculated Area: 402 sq. ft  
Included: Yes

Heated: Yes  
Finished: Yes  
Enclosed: Yes  
Contiguous: Yes  
Permitted: Yes  
Wet space: No  
Addition: No  
Conversion: No