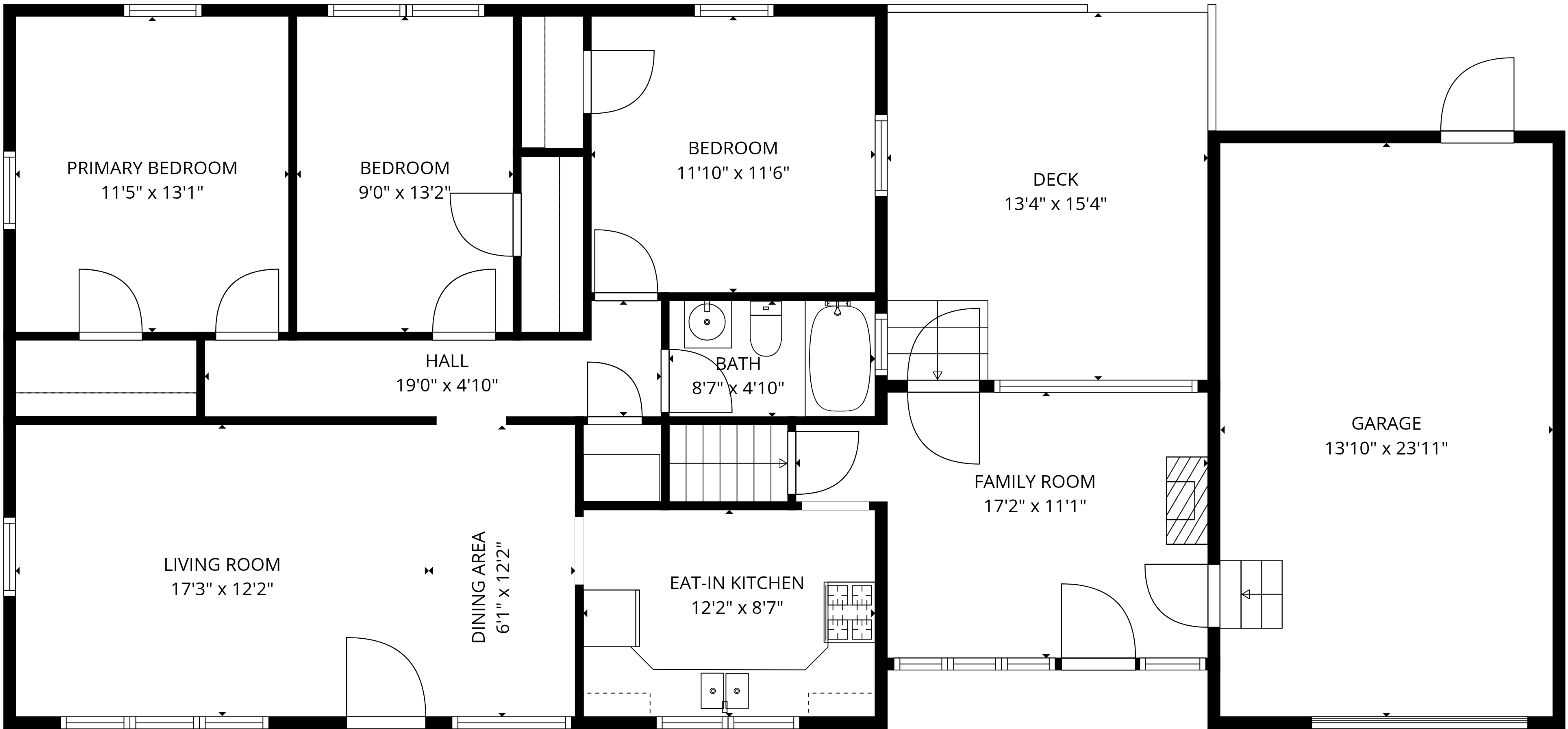
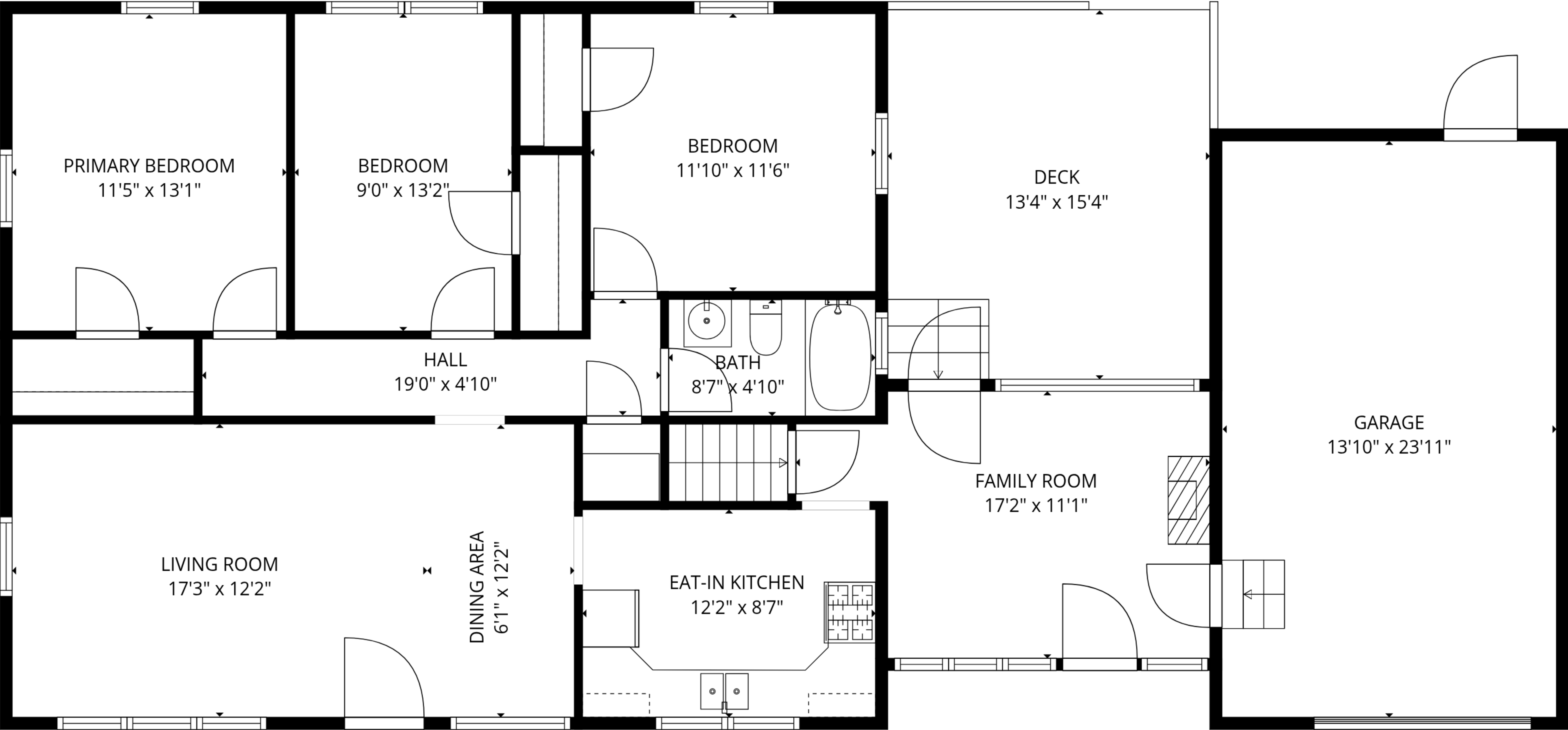


BASEMENT
34'7" x 17'4"

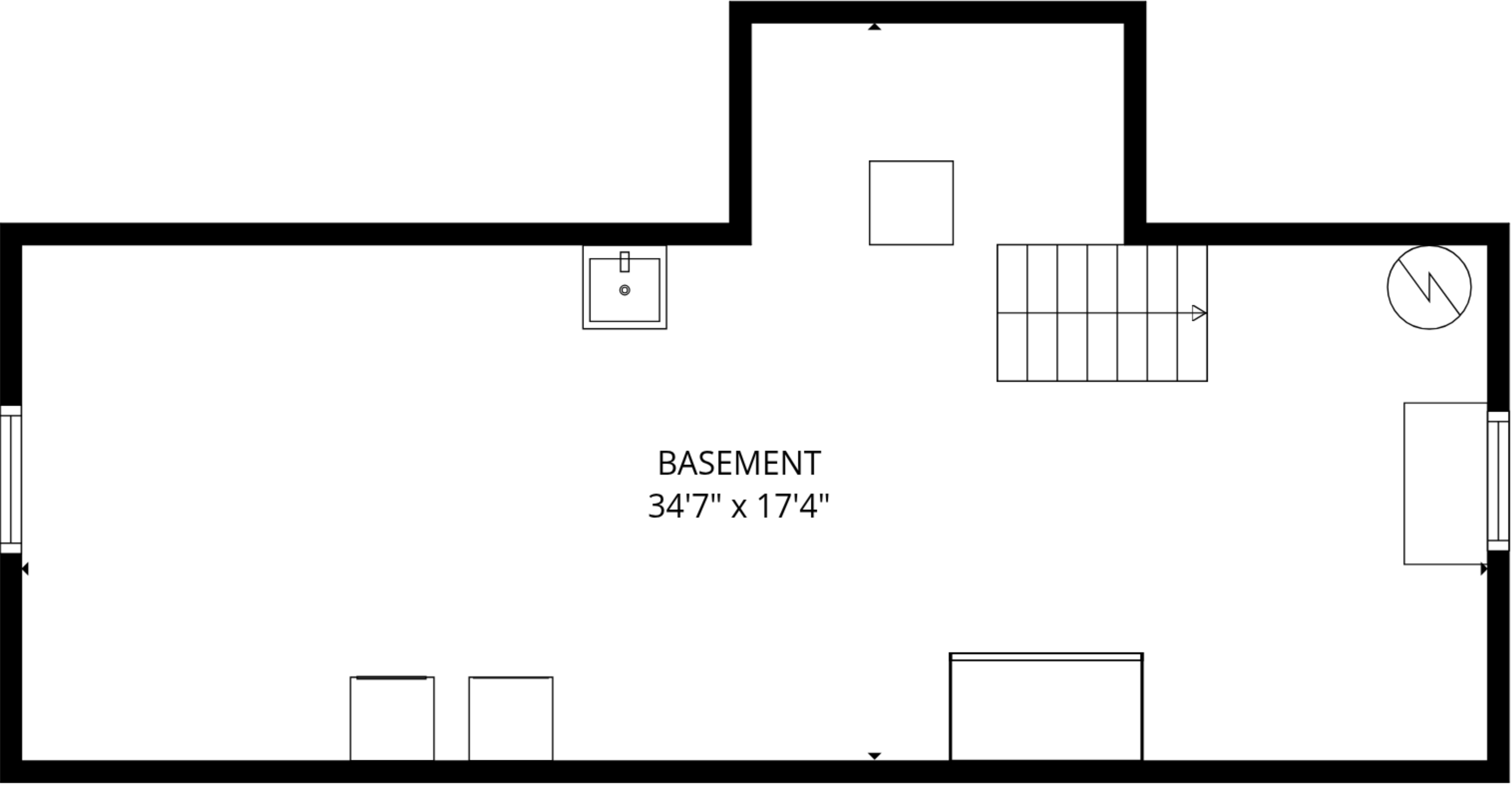
TOTAL: 1199 sq. ft
BELOW GROUND: 0 sq. ft, FLOOR 2: 1199 sq. ft
EXCLUDED AREAS: BASEMENT: 467 sq. ft, GARAGE: 332 sq. ft, DECK: 205 sq. ft,
WALLS: 164 sq. ft



TOTAL: 1199 sq. ft
BELOW GROUND: 0 sq. ft, FLOOR 2: 1199 sq. ft
EXCLUDED AREAS: BASEMENT: 467 sq. ft, GARAGE: 332 sq. ft, DECK: 205 sq. ft,
WALLS: 164 sq. ft



FLOOR 2



FLOOR 1

TOTAL: 1199 sq. ft
BELOW GROUND: 0 sq. ft, FLOOR 2: 1199 sq. ft
EXCLUDED AREAS: BASEMENT: 467 sq. ft, GARAGE: 332 sq. ft, DECK: 205 sq. ft,
WALLS: 164 sq. ft