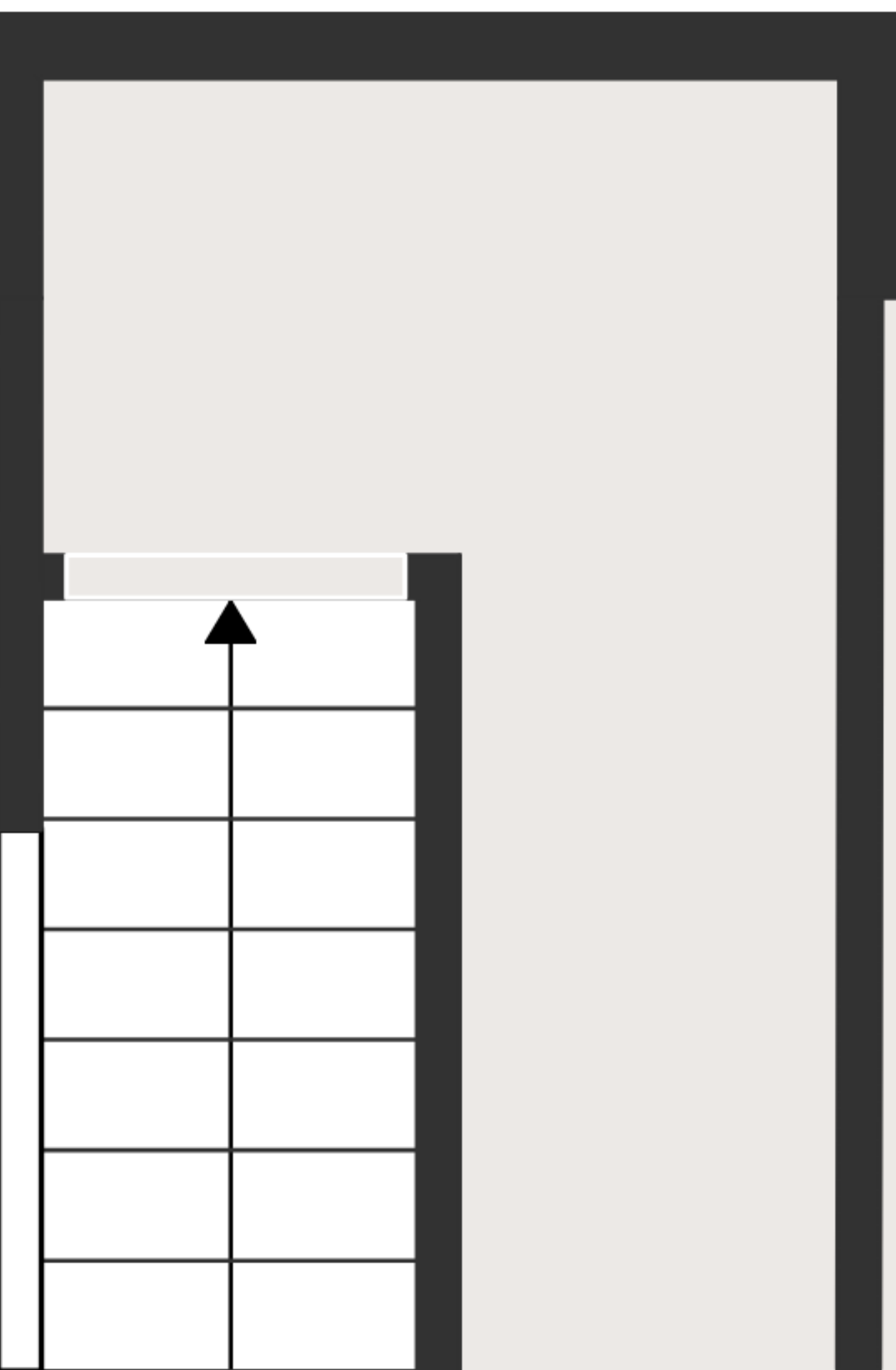


RECREATION ROOM
20'3" X 23'4"

BATH
5'1" X 7'4"

ROOM
13'1" X 11'0"

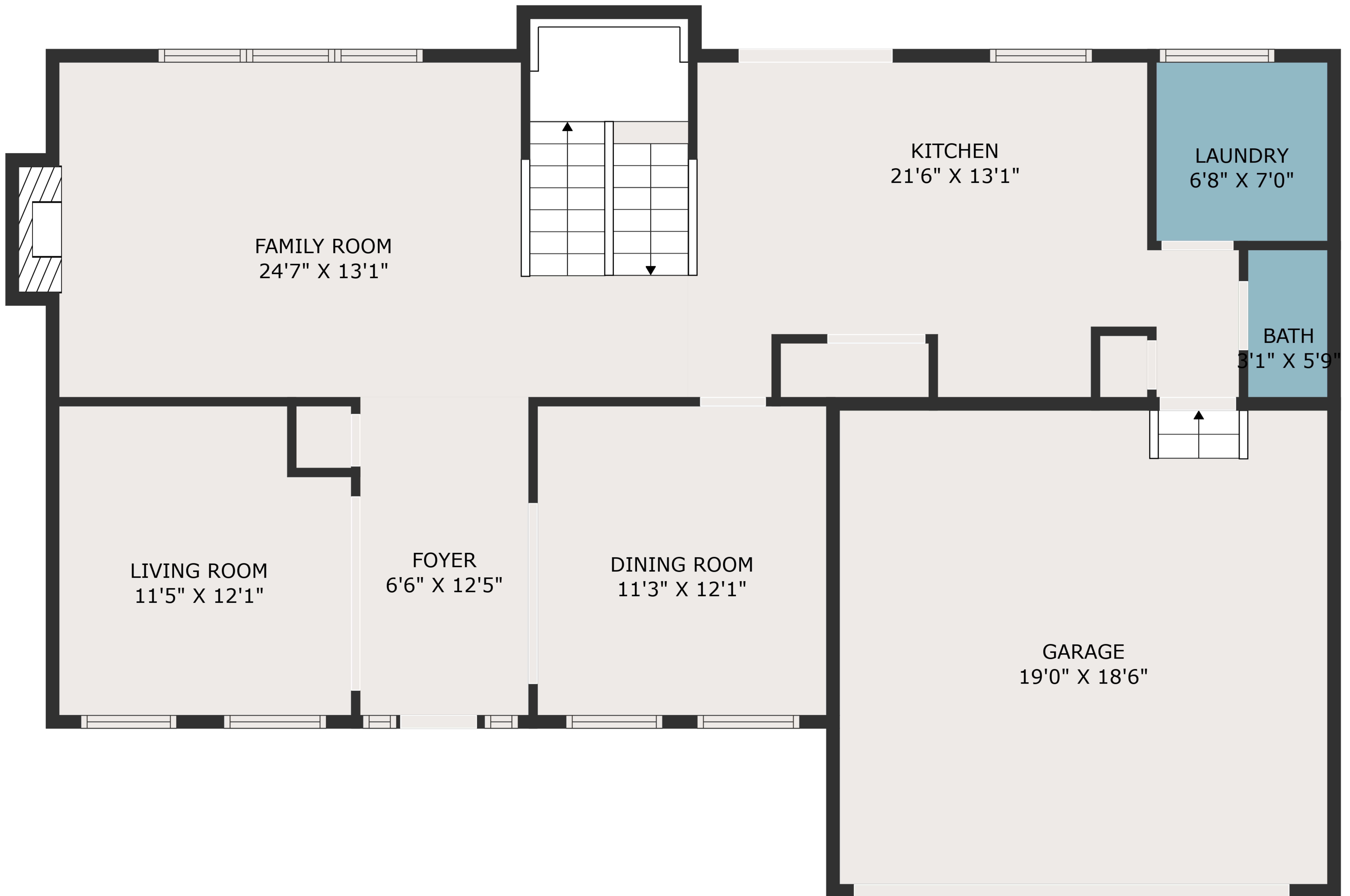
BASEMENT
31'1" X 13'9"



TOTAL: 2903 sq. ft

BELOW GROUND: 569 sq. ft, FLOOR 2: 1033 sq. ft, FLOOR 3: 1301 sq. ft
EXCLUDED AREAS: BASEMENT: 353 sq. ft, GARAGE: 353 sq. ft, FIREPLACE: 9 sq. ft,
OPEN TO BELOW: 46 sq. ft
WALLS: 249 sq. ft

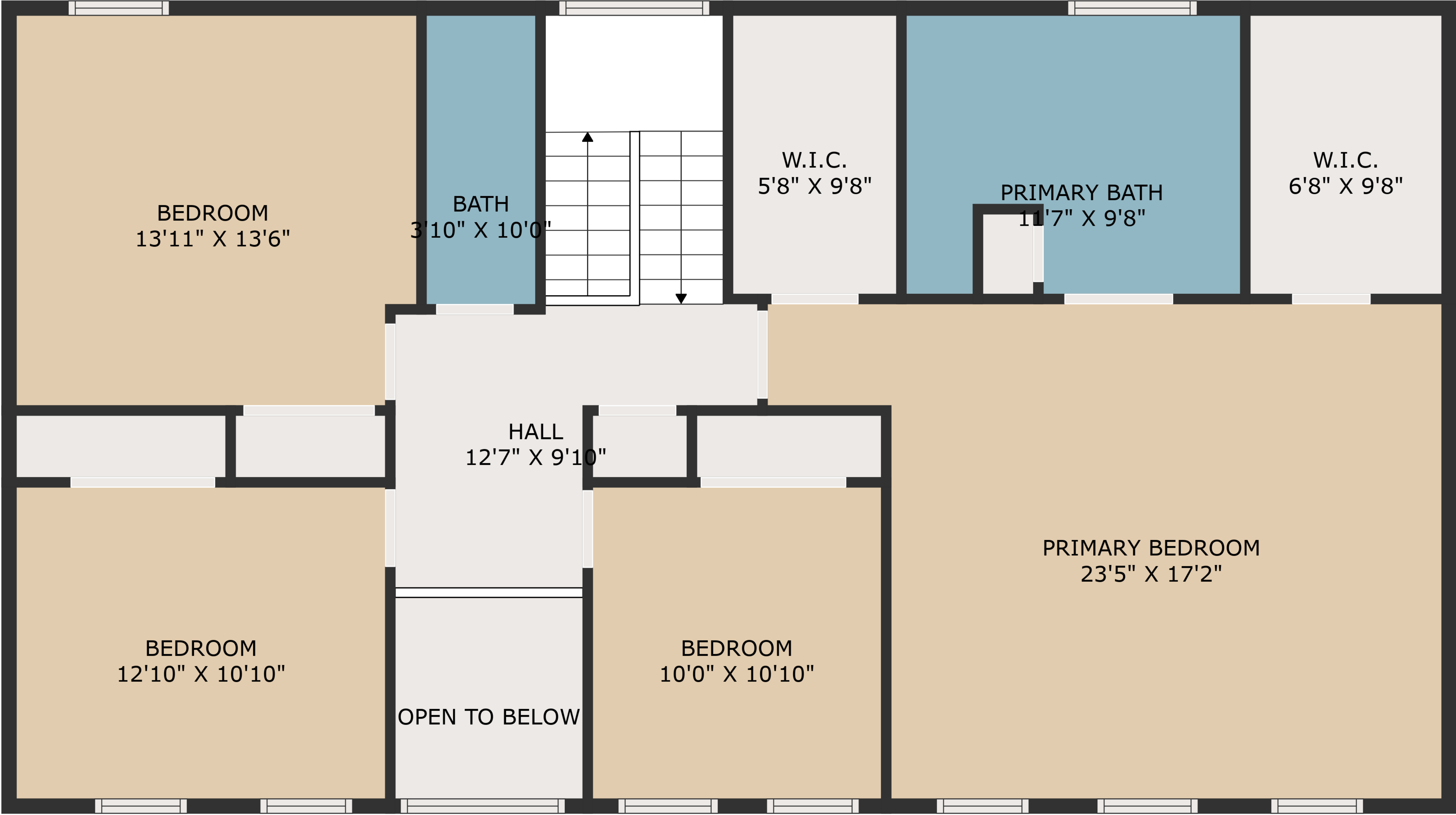
MEASUREMENTS ARE DEEMED HIGHLY RELIABLE BUT NOT GUARANTEED.



TOTAL: 2903 sq. ft

BELOW GROUND: 569 sq. ft, FLOOR 2: 1033 sq. ft, FLOOR 3: 1301 sq. ft
EXCLUDED AREAS: BASEMENT: 353 sq. ft, GARAGE: 353 sq. ft, FIREPLACE: 9 sq. ft,
OPEN TO BELOW: 46 sq. ft
WALLS: 249 sq. ft

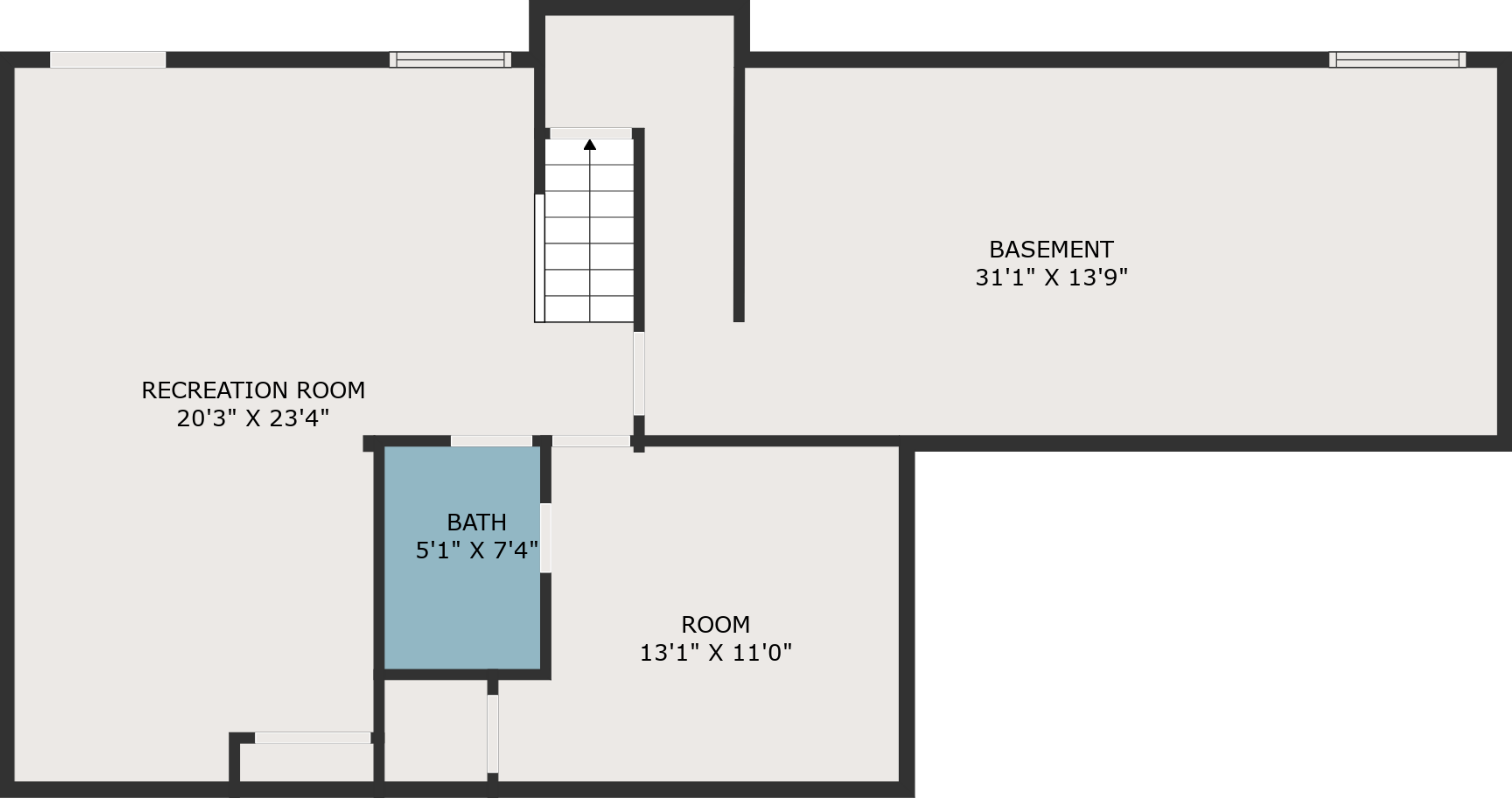
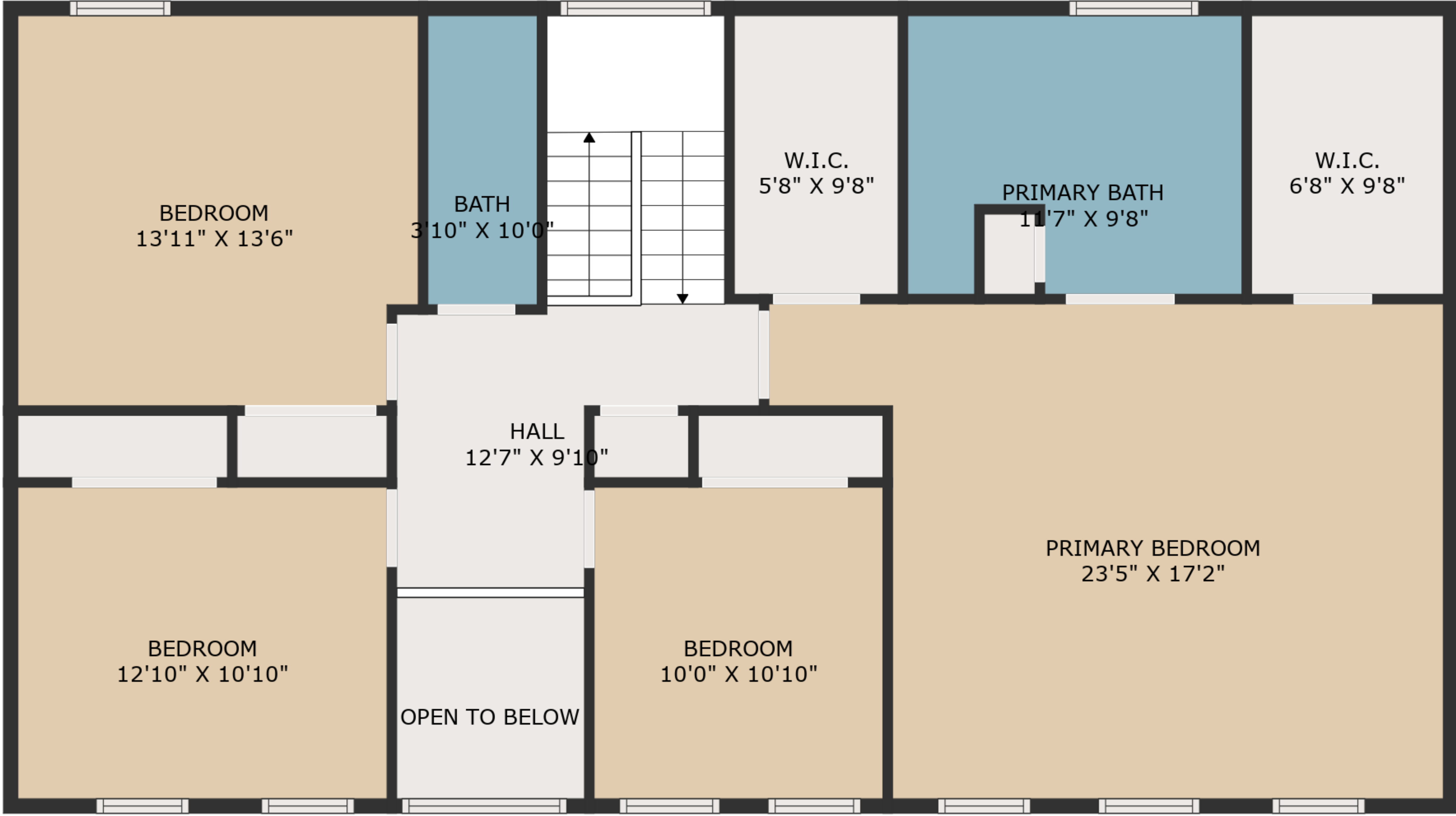
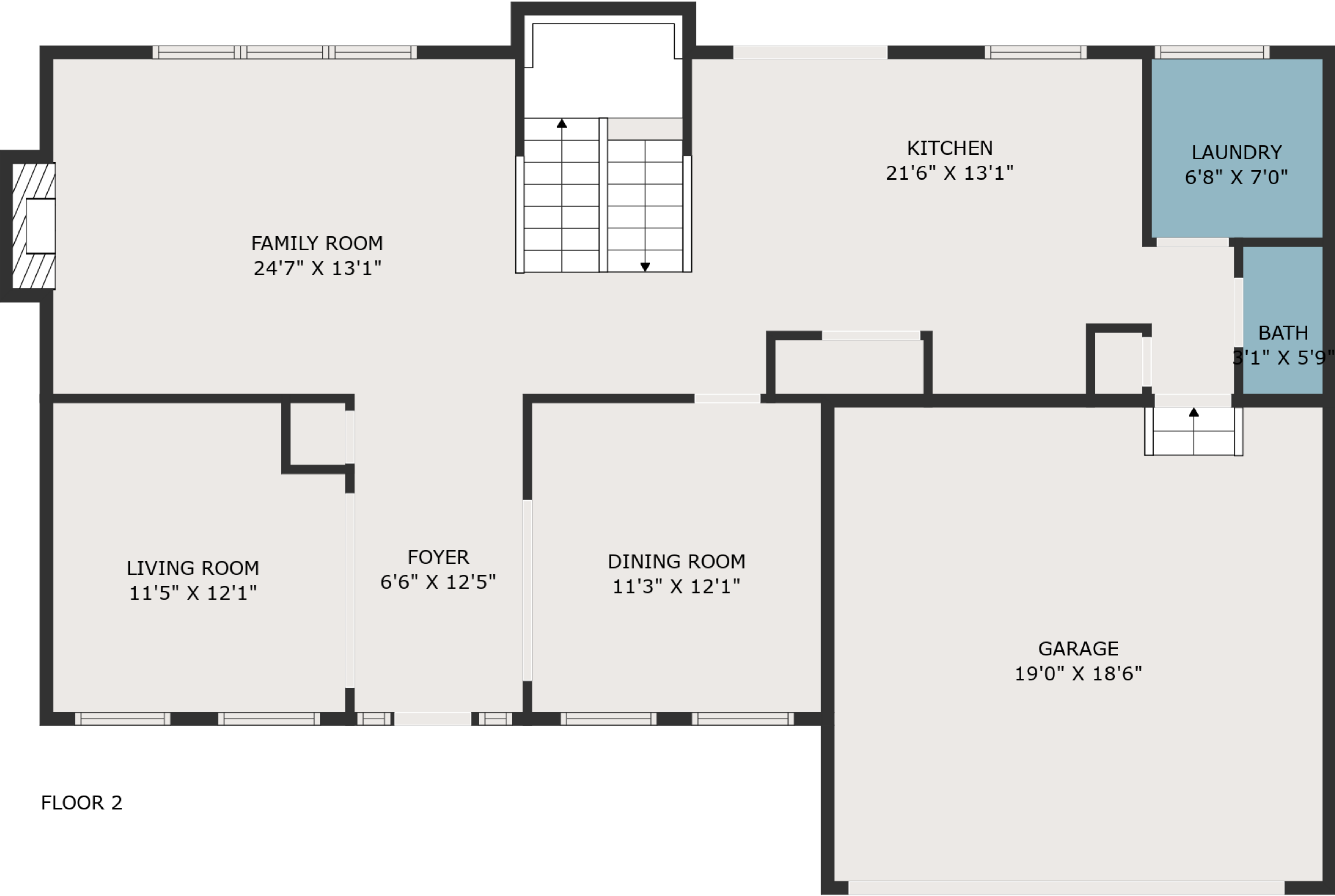
MEASUREMENTS ARE DEEMED HIGHLY RELIABLE BUT NOT GUARANTEED.



TOTAL: 2903 sq. ft

BELOW GROUND: 569 sq. ft, FLOOR 2: 1033 sq. ft, FLOOR 3: 1301 sq. ft
EXCLUDED AREAS: BASEMENT: 353 sq. ft, GARAGE: 353 sq. ft, FIREPLACE: 9 sq. ft,
OPEN TO BELOW: 46 sq. ft
WALLS: 249 sq. ft

MEASUREMENTS ARE DEEMED HIGHLY RELIABLE BUT NOT GUARANTEED.



TOTAL: 2903 sq. ft
BELOW GROUND: 569 sq. ft, FLOOR 2: 1033 sq. ft, FLOOR 3: 1301 sq. ft
EXCLUDED AREAS: BASEMENT: 353 sq. ft, GARAGE: 353 sq. ft, FIREPLACE: 9 sq. ft,
OPEN TO BELOW: 46 sq. ft
WALLS: 249 sq. ft

MEASUREMENTS ARE DEEMED HIGHLY RELIABLE BUT NOT GUARANTEED.