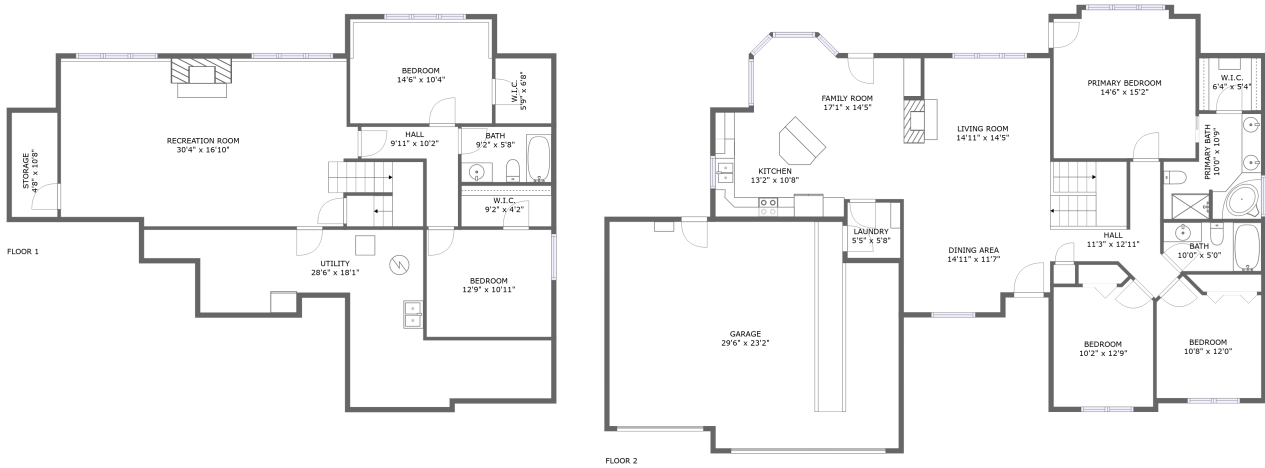


325 Fairway Circle, Andover, Butler County, Kansas, United States, 67002



Property summary


 **1** Garages

 **5** Bedrooms

 **3** Bathrooms

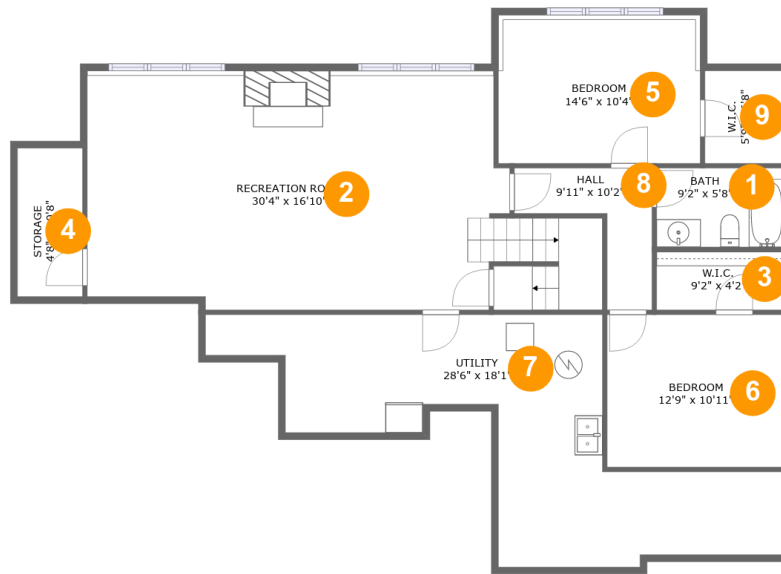
 **0** Half baths

 **2** Floors

 **2,749** Gross living area sqft

 **3,868** Total sqft

325 Fairway Circle, Andover, Butler County, Kansas, United States, 67002



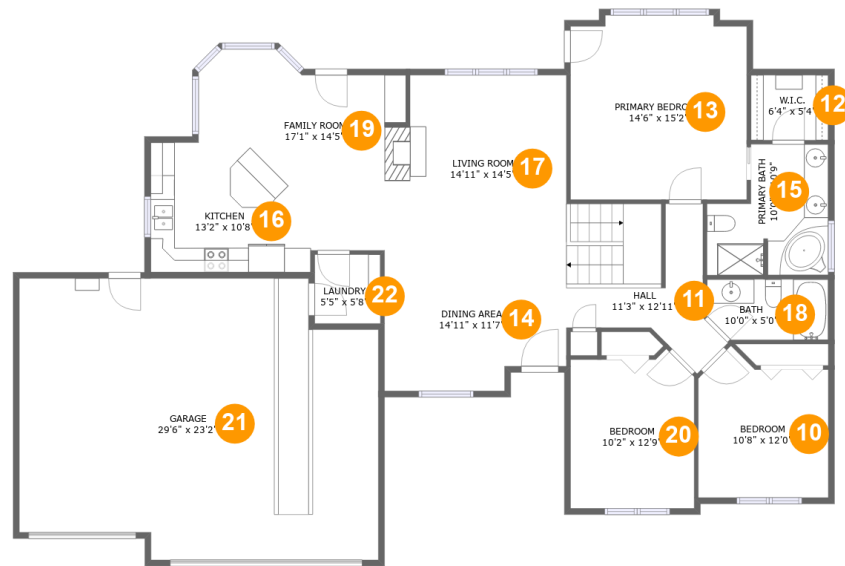
Room dimensions

Floor 1

Total sqft: 1571 Living area: 1125

#		Dimensions	sqft	Counted as living area
1	Bath	9'2" x 5'8"	52 sq. ft	Yes
2	Recreation Room	30'4" x 16'10"	545 sq. ft	Yes
3	Cl	9'2" x 4'2"	38 sq. ft	Yes
4	Storage	4'8" x 10'8"	50 sq. ft	No
5	Bedroom	14'6" x 10'4"	154 sq. ft	Yes
6	Bedroom	12'9" x 10'11"	139 sq. ft	Yes
7	Utility	28'6" x 18'1"	350 sq. ft	No
8	Hall	9'11" x 10'2"	54 sq. ft	Yes
9	Cl	5'9" x 6'8"	38 sq. ft	Yes

325 Fairway Circle, Andover, Butler County, Kansas, United States, 67002



Room dimensions

Floor 2

Total sqft: 2297 Living area: 1624

#		Dimensions	sqft	Counted as living area
10	Bedroom	10'8" x 12'0"	116 sq. ft	Yes
11	Hall	11'3" x 12'11"	125 sq. ft	Yes
12	Cl	6'4" x 5'4"	34 sq. ft	Yes
13	Bedroom	14'6" x 15'2"	215 sq. ft	Yes
14	Dining Room	14'11" x 11'7"	162 sq. ft	Yes
15	Bath	10'0" x 10'9"	89 sq. ft	Yes
16	Kitchen	13'2" x 10'8"	125 sq. ft	Yes
17	Living Room	14'11" x 14'5"	206 sq. ft	Yes
18	Bath	10'0" x 5'0"	48 sq. ft	Yes
19	Living Room	17'1" x 14'5"	174 sq. ft	Yes
20	Bedroom	10'2" x 12'9"	124 sq. ft	Yes

**325 Fairway Circle, Andover, Butler County, Kansas,
United States, 67002**

#		Dimensions	sqft	Counted as living area
21	Garage	29'6" x 23'2"	634 sq. ft	No
22	Utility	5'5" x 5'8"	31 sq. ft	Yes

325 Fairway Circle, Andover, Butler County, Kansas, United States, 67002

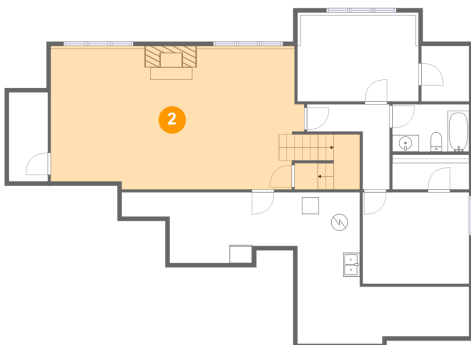
1 Floor 1 - Bath



Dimensions: 9'2" x 5'8"
Area: 52 sq. ft
Counted as living area: Yes

Heated: Yes
Finished: Yes
Enclosed: Yes
Contiguous: Yes
Permitted: Yes
Wet space: Yes
Addition: No
Conversion: No

2 Floor 1 - Recreation Room

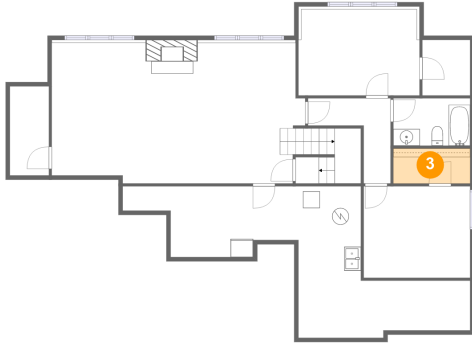


Dimensions: 30'4" x 16'10"
Area: 545 sq. ft
Counted as living area: Yes

Heated: Yes
Finished: Yes
Enclosed: Yes
Contiguous: Yes
Permitted: Yes
Wet space: No
Addition: No
Conversion: No

325 Fairway Circle, Andover, Butler County, Kansas, United States, 67002

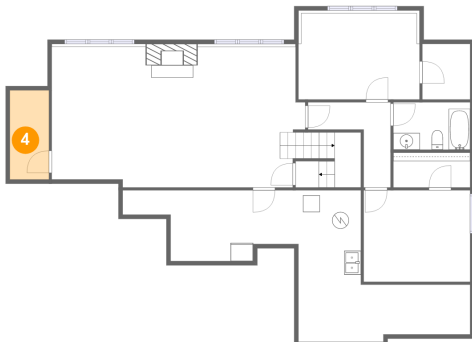
3 Floor 1 - Cl



Dimensions: 9'2" x 4'2"
Area: 38 sq. ft
Counted as living area: Yes

Heated: Yes
Finished: Yes
Enclosed: Yes
Contiguous: Yes
Permitted: Yes
Wet space: No
Addition: No
Conversion: No

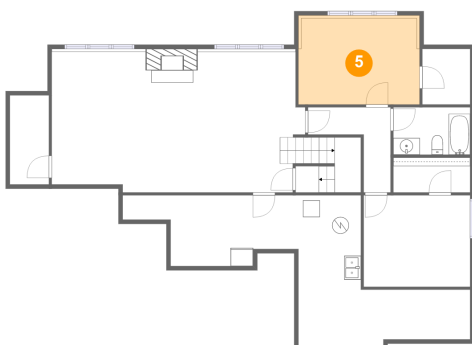
4 Floor 1 - Storage



Dimensions: 4'8" x 10'8"
Area: 50 sq. ft
Counted as living area: No

Heated: No
Finished: No
Enclosed: No
Contiguous: Yes
Permitted: Yes
Wet space: No
Addition: No
Conversion: No

5 Floor 1 - Bedroom

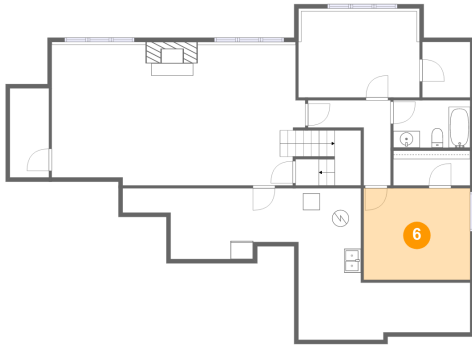


Dimensions: 14'6" x 10'4"
Area: 154 sq. ft
Counted as living area: Yes

Heated: Yes
Finished: Yes
Enclosed: Yes
Contiguous: Yes
Permitted: Yes
Wet space: No
Addition: No
Conversion: No

325 Fairway Circle, Andover, Butler County, Kansas, United States, 67002

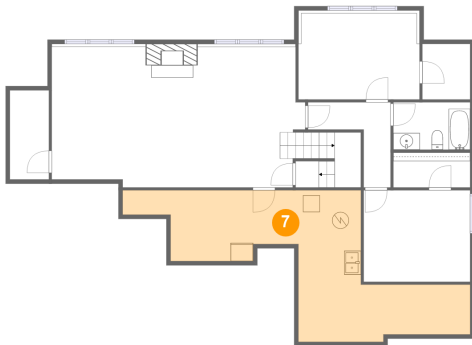
6 Floor 1 - Bedroom



Dimensions: 12'9" x 10'11"
Area: 139 sq. ft
Counted as living area: Yes

Heated: Yes
Finished: Yes
Enclosed: Yes
Contiguous: Yes
Permitted: Yes
Wet space: No
Addition: No
Conversion: No

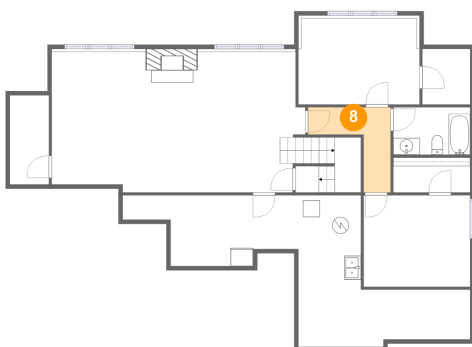
7 Floor 1 - Utility



Dimensions: 28'6" x 18'1"
Area: 350 sq. ft
Counted as living area: No

Heated: Yes
Finished: No
Enclosed: Yes
Contiguous: Yes
Permitted: Yes
Wet space: No
Addition: No
Conversion: No

8 Floor 1 - Hall

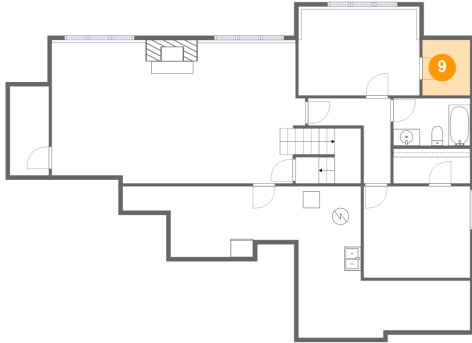


Dimensions: 9'11" x 10'2"
Area: 54 sq. ft
Counted as living area: Yes

Heated: Yes
Finished: Yes
Enclosed: Yes
Contiguous: Yes
Permitted: Yes
Wet space: No
Addition: No
Conversion: No

325 Fairway Circle, Andover, Butler County, Kansas, United States, 67002

9 Floor 1 - Cl



Dimensions: 5'9" x 6'8"
Area: 38 sq. ft
Counted as living area: Yes

Heated: Yes
Finished: Yes
Enclosed: Yes
Contiguous: Yes
Permitted: Yes
Wet space: No
Addition: No
Conversion: No

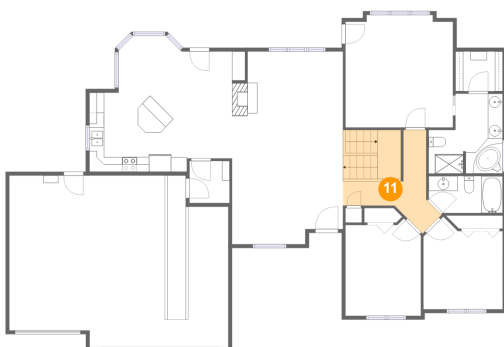
10 Floor 2 - Bedroom



Dimensions: 10'8" x 12'0"
Area: 116 sq. ft
Counted as living area: Yes

Heated: Yes
Finished: Yes
Enclosed: Yes
Contiguous: Yes
Permitted: Yes
Wet space: No
Addition: No
Conversion: No

11 Floor 2 - Hall



Dimensions: 11'3" x 12'11"
Area: 125 sq. ft
Counted as living area: Yes

Heated: Yes
Finished: Yes
Enclosed: Yes
Contiguous: Yes
Permitted: Yes
Wet space: No
Addition: No
Conversion: No

**325 Fairway Circle, Andover, Butler County, Kansas,
United States, 67002**

12 Floor 2 - Cl



Dimensions: 6'4" x 5'4"
Area: 34 sq. ft
Counted as living area: Yes

Heated: Yes
Finished: Yes
Enclosed: Yes
Contiguous: Yes
Permitted: Yes
Wet space: No
Addition: No
Conversion: No

13 Floor 2 - Bedroom



Dimensions: 14'6" x 15'2"
Area: 215 sq. ft
Counted as living area: Yes

Heated: Yes
Finished: Yes
Enclosed: Yes
Contiguous: Yes
Permitted: Yes
Wet space: No
Addition: No
Conversion: No

14 Floor 2 - Dining Room



Dimensions: 14'11" x 11'7"
Area: 162 sq. ft
Counted as living area: Yes

Heated: Yes
Finished: Yes
Enclosed: Yes
Contiguous: Yes
Permitted: Yes
Wet space: No
Addition: No
Conversion: No

**325 Fairway Circle, Andover, Butler County, Kansas,
United States, 67002**

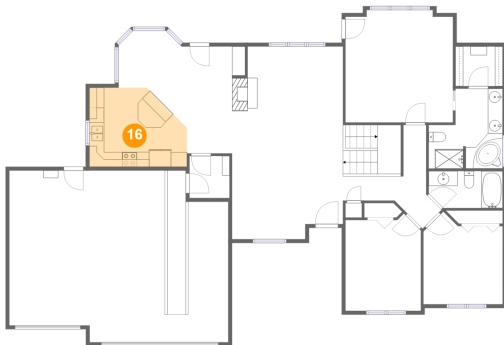
15 Floor 2 - Bath



Dimensions: 10'0" x 10'9"
Area: 89 sq. ft
Counted as living area: Yes

Heated: Yes
Finished: Yes
Enclosed: Yes
Contiguous: Yes
Permitted: Yes
Wet space: Yes
Addition: No
Conversion: No

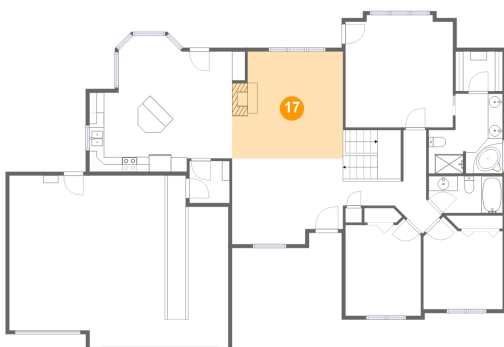
16 Floor 2 - Kitchen



Dimensions: 13'2" x 10'8"
Area: 125 sq. ft
Counted as living area: Yes

Heated: Yes
Finished: Yes
Enclosed: Yes
Contiguous: Yes
Permitted: Yes
Wet space: No
Addition: No
Conversion: No

17 Floor 2 - Living Room



Dimensions: 14'11" x 14'5"
Area: 206 sq. ft
Counted as living area: Yes

Heated: Yes
Finished: Yes
Enclosed: Yes
Contiguous: Yes
Permitted: Yes
Wet space: No
Addition: No
Conversion: No

**325 Fairway Circle, Andover, Butler County, Kansas,
United States, 67002**

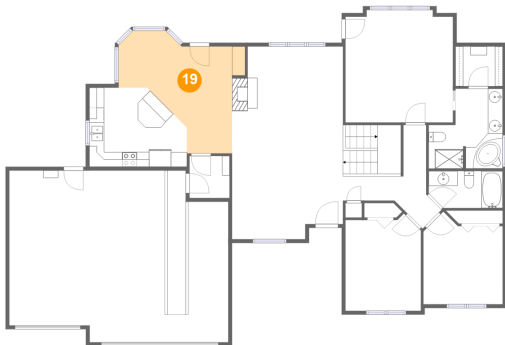
18 Floor 2 - Bath



Dimensions: 10'0" x 5'0"
Area: 48 sq. ft
Counted as living area: Yes

Heated: Yes
Finished: Yes
Enclosed: Yes
Contiguous: Yes
Permitted: Yes
Wet space: Yes
Addition: No
Conversion: No

19 Floor 2 - Living Room



Dimensions: 17'1" x 14'5"
Area: 174 sq. ft
Counted as living area: Yes

Heated: Yes
Finished: Yes
Enclosed: Yes
Contiguous: Yes
Permitted: Yes
Wet space: No
Addition: No
Conversion: No

20 Floor 2 - Bedroom



Dimensions: 10'2" x 12'9"
Area: 124 sq. ft
Counted as living area: Yes

Heated: Yes
Finished: Yes
Enclosed: Yes
Contiguous: Yes
Permitted: Yes
Wet space: No
Addition: No
Conversion: No

**325 Fairway Circle, Andover, Butler County, Kansas,
United States, 67002**

21 Floor 2 - Garage



Dimensions: 29'6" x 23'2"
Area: 634 sq. ft
Counted as living area: No

Heated: No
Finished: No
Enclosed: Yes
Contiguous: Yes
Permitted: Yes
Wet space: No
Addition: No
Conversion: No

22 Floor 2 - Utility



Dimensions: 5'5" x 5'8"
Area: 31 sq. ft
Counted as living area: Yes

Heated: Yes
Finished: Yes
Enclosed: Yes
Contiguous: Yes
Permitted: Yes
Wet space: No
Addition: No
Conversion: No