

547 Kenan Street, Meadow Brook, Taneytown, Carroll County, Maryland, United States, 21787

Gross Living Area: 1308 sq. ft

Space	Area (sq. ft)	Calculation <small>Coordinate Polygon Area Algorithm using inches</small>
UTILITY (Non-living area)	116	$174.7 * (243.5 - 152.9) + (174.7 + 298.3) * (152.9 - 152.9) * 0.5 * 0.00694$ $-((399.3 + 399.3) * (152.9 - 320.6) + (399.3 + 393.3) * (320.6 - 320.6) + (393.3 + 393.3) * (320.6 - 324.6) + (393.3 + 298.3) * (324.6 - 324.6) + (298.3 + 298.3) * (324.6 - 320.6) + (298.3 + 302.3) * (320.6 - 320.6) + (302.3 + 302.3) * (320.6 - 158.9) + (302.3 + 298.3) * (158.9 - 158.9) + (298.3 + 298.3) * (158.9 - 152.9) + (298.3 + 399.3) * (152.9 - 152.9) * 0.5 * 0.00694$
FAMILY ROOM (Non-living area)	301	$-((399.3 + 399.3) * (320.6 - 350.9) + (399.3 + 448.6) * (350.9 - 350.9) + (448.6 + 448.6) * (350.9 - 399.1) + (448.6 + 399.3) * (399.1 - 399.1) + (399.3 + 399.3) * (399.1 - 478.8) + (399.3 + 133.7) * (478.8 - 478.8) + (133.7 + 133.7) * (478.8 - 324.6) + (133.7 + 393.3) * (324.6 - 324.6) + (393.3 + 393.3) * (324.6 - 320.6) + (393.3 + 399.3) * (320.6 - 320.6) * 0.5 * 0.00694$

547 Kenan Street, Meadow Brook, Taneytown, Carroll County, Maryland, United States, 21787

Gross Living Area: 1308 sq. ft

FLOOR 2
[AREA: 557]

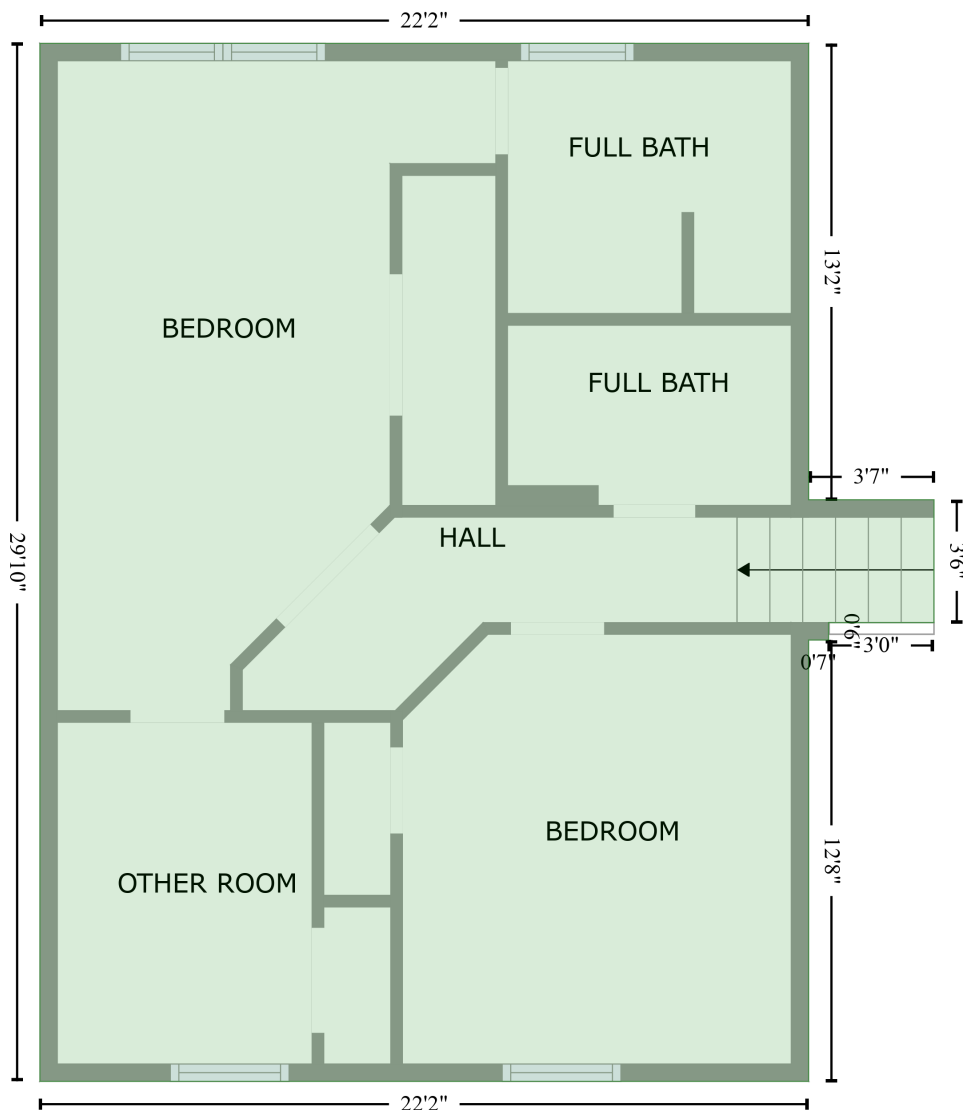


Space	Area (sq. ft)	Calculation <small>Coordinate Polygon Area Algorithm using inches</small>
FLOOR 2 (Living area)	557	$-((513.8 + 513.8) * (35 - 345.8) + (513.8 + 259.6) * (345.8 - 345.8) + (259.6 + 259.6) * (345.8 - 240.9) + (259.6 + 234.7) * (240.9 - 240.9) + (234.7 + 234.7) * (240.9 - 192.5) + (234.7 + 259.6) * (192.5 - 192.5) + (259.6 + 259.6) * (192.5 - 35) + (259.6 + 513.8) * (35 - 35)) * 0.5 * 0.00694$

547 Kenan Street, Meadow Brook, Taneytown, Carroll County, Maryland, United States, 21787

Gross Living Area: 1308 sq. ft

FLOOR 3
[AREA: 674]



Space	Area (sq. ft)	Calculation <small>Coordinate Polygon Area Algorithm using inches</small>
FLOOR 3 (Living area)	674	$ \begin{aligned} & -((293.6 + 293.6) * (128.4 - 285.9) + (293.6 + 336.9) * (285.9 - 285.9) + (336.9 + 336.9) * (285.9 - \\ & 328.3) + (336.9 + 300.5) * (328.3 - 328.3) + (300.5 + 300.5) * (328.3 - 334.3) + (300.5 + 293.6) * \\ & (334.3 - 334.3) + (293.6 + 293.6) * (334.3 - 486.7) + (293.6 + 28) * (486.7 - 486.7) + (28 + 28) * \\ & (486.7 - 128.4) + (28 + 293.6) * (128.4 - 128.4)) * 0.5 * 0.00694 \end{aligned} $