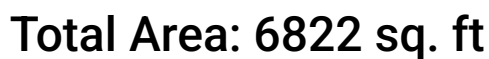


11 Ashford Lane, Andover, Essex County, Massachusetts, United States, 01810, 11



Excluded: Undefined 19 sq. ft, Storage 312 sq. ft, Covered Patio / Wet Bar 260 sq. ft, Garage 1497 sq. ft, Outdoor Patio 1678 sq. ft, Fireplace 26 sq. ft, Opentobelow 251 sq. ft, Outdoor Balcony 93 sq. ft

Property summary



Home report

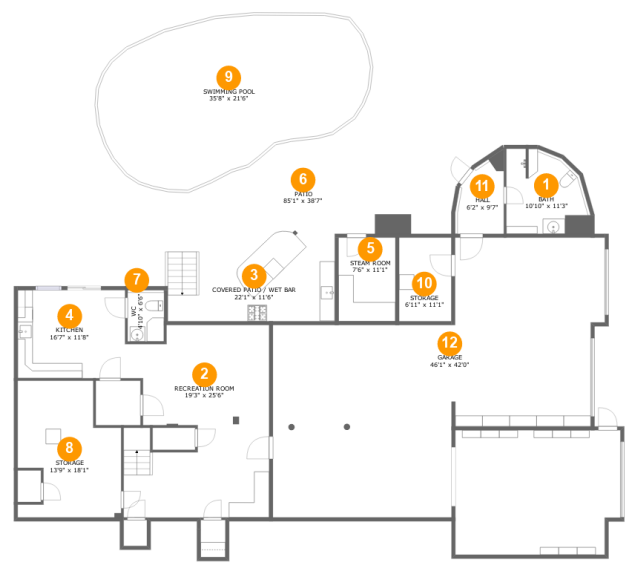
11 Ashford Lane, Andover, Essex County, Massachusetts, United States, 01810, 11

 **1**
Half baths

 **1**
Garages

Home report

11 Ashford Lane, Andover, Essex County, Massachusetts, United States, 01810, 11



Room dimensions

Floor 1

Total:1099sqft

Excluded: 3766sqft

#		Max Dimensions	sqft	Included
1	Bath	10'10" x 11'3"	108 sq. ft	Yes
2	Recreation Room	19'3" x 25'6"	426 sq. ft	Yes
3	Covered Patio / Wet Bar	22'1" x 11'6"	256 sq. ft	No
4	Kitchen	16'7" x 11'8"	177 sq. ft	Yes
5	Steam Room	7'6" x 11'1"	83 sq. ft	Yes
6	Patio	85'1" x 38'7"	2293 sq. ft	No
7	WC	4'10" x 6'6"	33 sq. ft	Yes
8	Storage	13'9" x 18'1"	209 sq. ft	No
9	Swimming Pool	35'8" x 21'6"	615 sq. ft	No
10	Storage	6'11" x 11'1"	77 sq. ft	No
11	Hall	6'2" x 9'7"	56 sq. ft	Yes

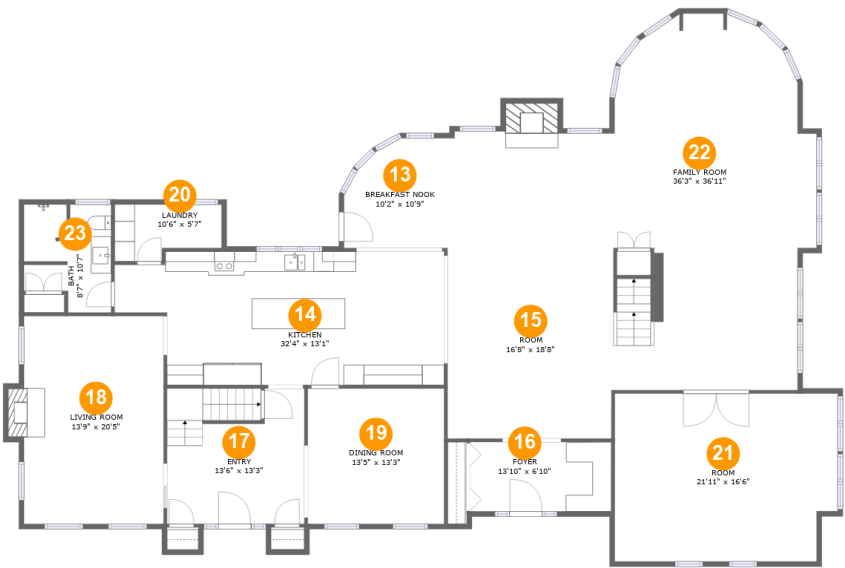
Home report

11 Ashford Lane, Andover, Essex County, Massachusetts, United States, 01810, 11

#		Max Dimensions	sqft	Included
12	Garage	46'1" x 42'0"	1434 sq. ft	No

Home report

11 Ashford Lane, Andover, Essex County, Massachusetts, United States, 01810, 11



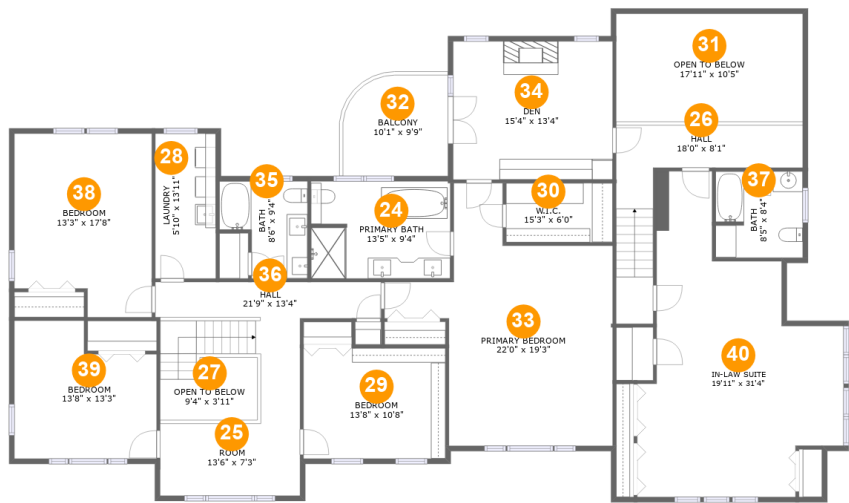
Room dimensions

Floor 2 Total:3082sqft Excluded: 26sqft

#		Max Dimensions	sqft	Included
13	Breakfast Nook	10'2" x 10'9"	98 sq. ft	Yes
14	Kitchen	32'4" x 13'1"	381 sq. ft	Yes
15	Room	16'8" x 18'8"	308 sq. ft	Yes
16	Foyer	13'10" x 6'10"	94 sq. ft	Yes
17	Entry	13'6" x 13'3"	176 sq. ft	Yes
18	Living Room	13'9" x 20'5"	287 sq. ft	Yes
19	Dining Room	13'5" x 13'3"	178 sq. ft	Yes
20	Laundry	10'6" x 5'7"	51 sq. ft	Yes
21	Room	21'11" x 16'6"	351 sq. ft	Yes
22	Family Room	36'3" x 36'11"	836 sq. ft	Yes
23	Bath	8'7" x 10'7"	79 sq. ft	Yes

Home report

11 Ashford Lane, Andover, Essex County, Massachusetts, United States, 01810, 11



Room dimensions

Floor 3 Total:2641sqft Excluded: 344sqft

#		Max Dimensions	sqft	Included
24	Primary Bath	13'5" x 9'4"	125 sq. ft	Yes
25	Room	13'6" x 7'3"	98 sq. ft	Yes
26	Hall	18'0" x 8'1"	133 sq. ft	Yes
27	Open To Below	9'4" x 3'11"	48 sq. ft	No
28	Laundry	5'10" x 13'11"	81 sq. ft	Yes
29	Bedroom	13'8" x 10'8"	146 sq. ft	Yes
30	W.I.C.	15'3" x 6'0"	87 sq. ft	Yes
31	Open To Below	17'11" x 10'5"	187 sq. ft	No
32	Balcony	10'1" x 9'9"	93 sq. ft	No
33	Primary Bedroom	22'0" x 19'3"	324 sq. ft	Yes
34	Den	15'4" x 13'4"	205 sq. ft	Yes

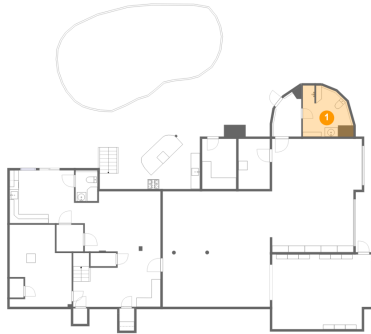
Home report

11 Ashford Lane, Andover, Essex County, Massachusetts, United States, 01810, 11

#		Max Dimensions	sqft	Included
35	Bath	8'6" x 9'4"	65 sq. ft	Yes
36	Hall	21'9" x 13'4"	160 sq. ft	Yes
37	Bath	8'5" x 8'4"	69 sq. ft	Yes
38	Bedroom	13'3" x 17'8"	215 sq. ft	Yes
39	Bedroom	13'8" x 13'3"	159 sq. ft	Yes
40	In-law Suite	19'11" x 31'4"	415 sq. ft	Yes

11 Ashford Lane, Andover, Essex County, Massachusetts, United States, 01810, 11

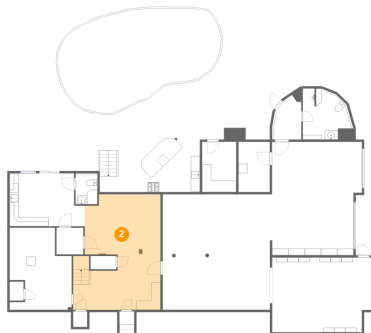
1 Floor 1 - Bath



Max Dimensions: 10'10" x 11'3"
Calculated Area: 108 sq. ft
Included: Yes

Heated: Yes
Finished: Yes
Enclosed: Yes
Contiguous: Yes
Permitted: Yes
Wet space: Yes
Addition: No
Conversion: No

2 Floor 1 - Recreation Room

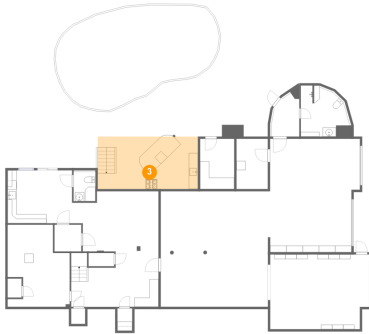


Max Dimensions: 19'3" x 25'6"
Calculated Area: 426 sq. ft
Included: Yes

Heated: Yes
Finished: Yes
Enclosed: Yes
Contiguous: Yes
Permitted: Yes
Wet space: No
Addition: No
Conversion: No

11 Ashford Lane, Andover, Essex County, Massachusetts, United States, 01810, 11

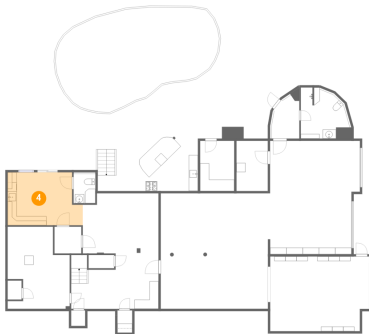
3 Floor 1 - Covered Patio / Wet Bar



Max Dimensions: 22'1" x 11'6"
Calculated Area: 256 sq. ft
Included: No

Heated: No
Finished: Yes
Enclosed: No
Contiguous: Yes
Permitted: Yes
Wet space: No
Addition: No
Conversion: No

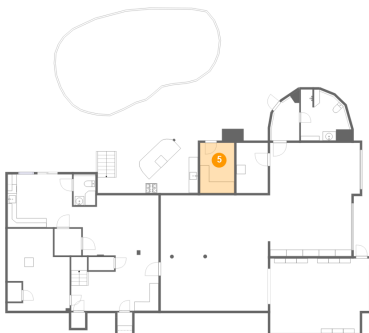
4 Floor 1 - Kitchen



Max Dimensions: 16'7" x 11'8"
Calculated Area: 177 sq. ft
Included: Yes

Heated: Yes
Finished: Yes
Enclosed: Yes
Contiguous: Yes
Permitted: Yes
Wet space: No
Addition: No
Conversion: No

5 Floor 1 - Steam Room

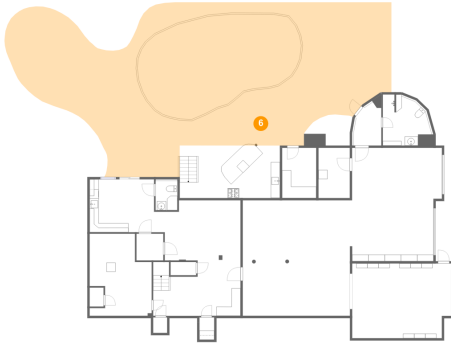


Max Dimensions: 7'6" x 11'1"
Calculated Area: 83 sq. ft
Included: Yes

Heated: Yes
Finished: Yes
Enclosed: Yes
Contiguous: Yes
Permitted: Yes
Wet space: No
Addition: No
Conversion: No

11 Ashford Lane, Andover, Essex County, Massachusetts, United States, 01810, 11

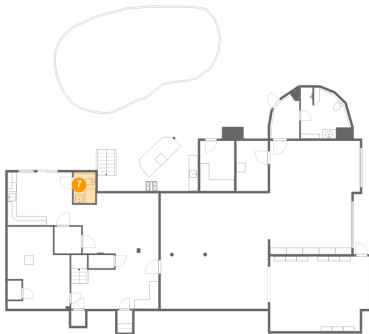
6 Floor 1 - Patio



Max Dimensions: 85'1" x 38'7"
Calculated Area: 2293 sq. ft
Included: No

Heated: No
Finished: Yes
Enclosed: No
Contiguous: Yes
Permitted: Yes
Wet space: No
Addition: No
Conversion: No

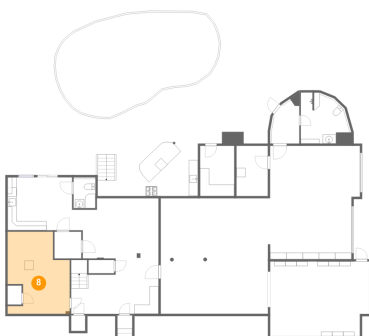
7 Floor 1 - WC



Max Dimensions: 4'10" x 6'6"
Calculated Area: 33 sq. ft
Included: Yes

Heated: Yes
Finished: Yes
Enclosed: Yes
Contiguous: Yes
Permitted: Yes
Wet space: Yes
Addition: No
Conversion: No

8 Floor 1 - Storage

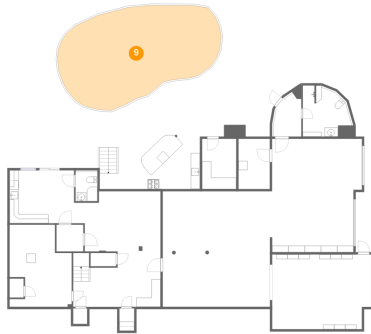


Max Dimensions: 13'9" x 18'1"
Calculated Area: 209 sq. ft
Included: No

Heated: No
Finished: No
Enclosed: No
Contiguous: Yes
Permitted: Yes
Wet space: No
Addition: No
Conversion: No

11 Ashford Lane, Andover, Essex County, Massachusetts, United States, 01810, 11

9 Floor 1 - Swimming Pool



Max Dimensions: 35'8" x 21'6"
Calculated Area: 615 sq. ft
Included: No

Heated: No
Finished: No
Enclosed: No
Contiguous: Yes
Permitted: No
Wet space: No
Addition: No
Conversion: No

10 Floor 1 - Storage



Max Dimensions: 6'11" x 11'1"
Calculated Area: 77 sq. ft
Included: No

Heated: No
Finished: No
Enclosed: No
Contiguous: Yes
Permitted: Yes
Wet space: No
Addition: No
Conversion: No

11 Floor 1 - Hall

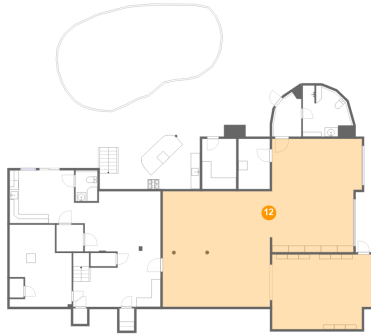


Max Dimensions: 6'2" x 9'7"
Calculated Area: 56 sq. ft
Included: Yes

Heated: Yes
Finished: Yes
Enclosed: Yes
Contiguous: Yes
Permitted: Yes
Wet space: No
Addition: No
Conversion: No

11 Ashford Lane, Andover, Essex County, Massachusetts, United States, 01810, 11

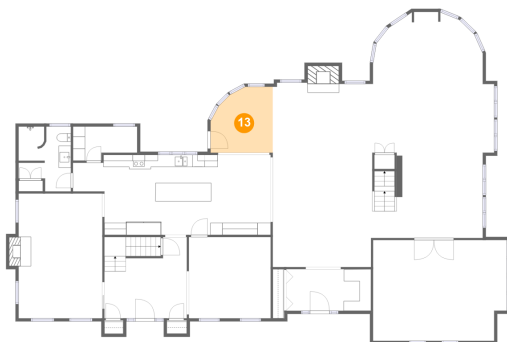
12 Floor 1 - Garage



Max Dimensions: 46'1" x 42'0"
Calculated Area: 1434 sq. ft
Included: No

Heated: No
Finished: No
Enclosed: Yes
Contiguous: Yes
Permitted: Yes
Wet space: No
Addition: No
Conversion: No

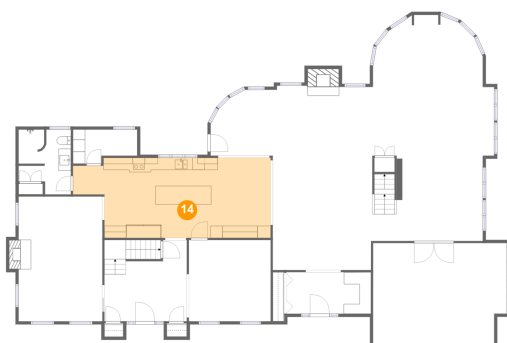
13 Floor 2 - Breakfast Nook



Max Dimensions: 10'2" x 10'9"
Calculated Area: 98 sq. ft
Included: Yes

Heated: Yes
Finished: Yes
Enclosed: Yes
Contiguous: Yes
Permitted: Yes
Wet space: No
Addition: No
Conversion: No

14 Floor 2 - Kitchen

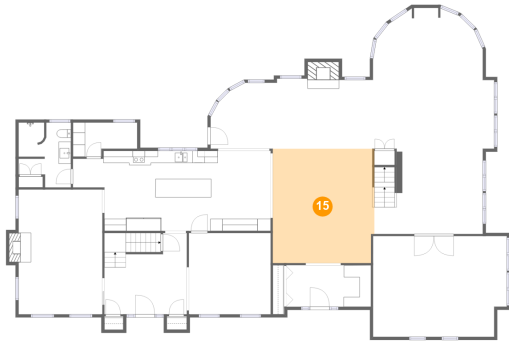


Max Dimensions: 32'4" x 13'1"
Calculated Area: 381 sq. ft
Included: Yes

Heated: Yes
Finished: Yes
Enclosed: Yes
Contiguous: Yes
Permitted: Yes
Wet space: No
Addition: No
Conversion: No

11 Ashford Lane, Andover, Essex County, Massachusetts, United States, 01810, 11

15 Floor 2 - Room



Max Dimensions: 16'8" x 18'8"
Calculated Area: 308 sq. ft
Included: Yes

Heated: Yes
Finished: Yes
Enclosed: Yes
Contiguous: Yes
Permitted: Yes
Wet space: No
Addition: No
Conversion: No

16 Floor 2 - Foyer



Max Dimensions: 13'10" x 6'10"
Calculated Area: 94 sq. ft
Included: Yes

Heated: Yes
Finished: Yes
Enclosed: Yes
Contiguous: Yes
Permitted: Yes
Wet space: No
Addition: No
Conversion: No

17 Floor 2 - Entry



Max Dimensions: 13'6" x 13'3"
Calculated Area: 176 sq. ft
Included: Yes

Heated: Yes
Finished: Yes
Enclosed: Yes
Contiguous: Yes
Permitted: Yes
Wet space: No
Addition: No
Conversion: No

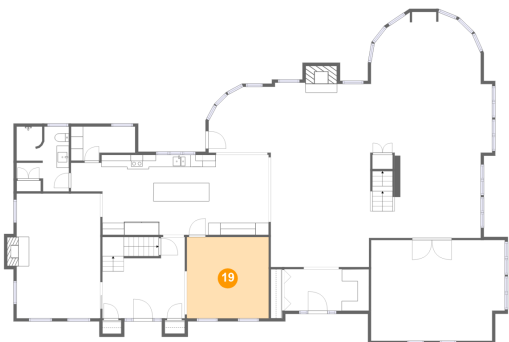
18 Floor 2 - Living Room



Max Dimensions: 13'9" x 20'5"
Calculated Area: 287 sq. ft
Included: Yes

Heated: Yes
Finished: Yes
Enclosed: Yes
Contiguous: Yes
Permitted: Yes
Wet space: No
Addition: No
Conversion: No

19 Floor 2 - Dining Room



Max Dimensions: 13'5" x 13'3"
Calculated Area: 178 sq. ft
Included: Yes

Heated: Yes
Finished: Yes
Enclosed: Yes
Contiguous: Yes
Permitted: Yes
Wet space: No
Addition: No
Conversion: No

20 Floor 2 - Laundry



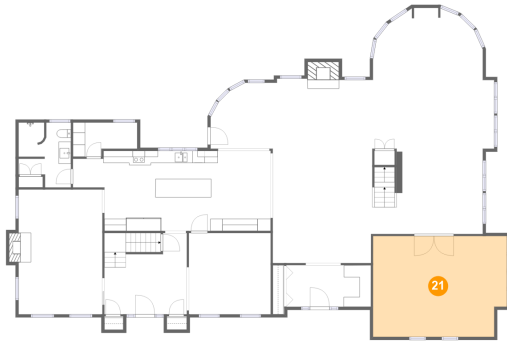
Max Dimensions: 10'6" x 5'7"
Calculated Area: 51 sq. ft
Included: Yes

Heated: Yes
Finished: Yes
Enclosed: Yes
Contiguous: Yes
Permitted: Yes
Wet space: No
Addition: No
Conversion: No

Home report

11 Ashford Lane, Andover, Essex County, Massachusetts, United States, 01810, 11

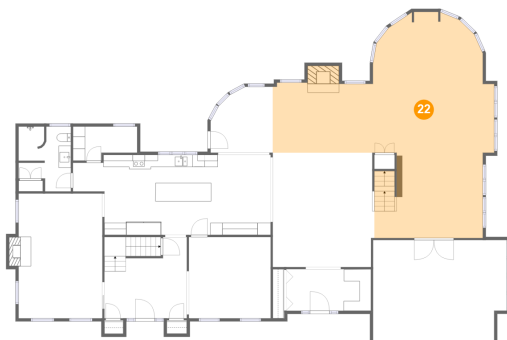
21 Floor 2 - Room



Max Dimensions: 21'11" x 16'6"
Calculated Area: 351 sq. ft
Included: Yes

Heated: Yes
Finished: Yes
Enclosed: Yes
Contiguous: Yes
Permitted: Yes
Wet space: No
Addition: No
Conversion: No

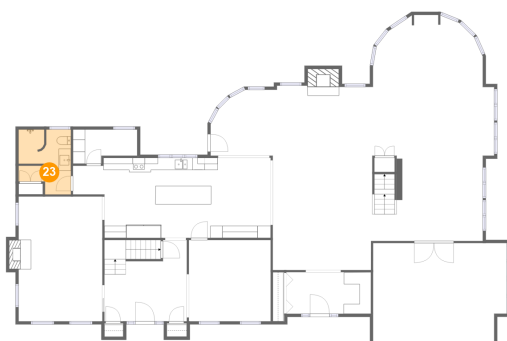
22 Floor 2 - Family Room



Max Dimensions: 36'3" x 36'11"
Calculated Area: 836 sq. ft
Included: Yes

Heated: Yes
Finished: Yes
Enclosed: Yes
Contiguous: Yes
Permitted: Yes
Wet space: No
Addition: No
Conversion: No

23 Floor 2 - Bath

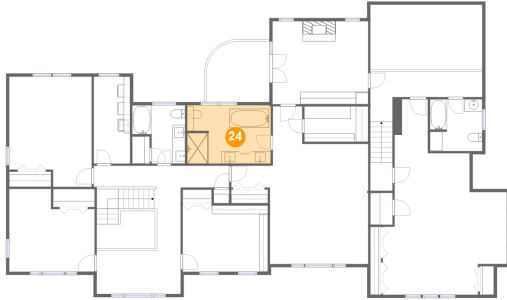


Max Dimensions: 8'7" x 10'7"
Calculated Area: 79 sq. ft
Included: Yes

Heated: Yes
Finished: Yes
Enclosed: Yes
Contiguous: Yes
Permitted: Yes
Wet space: Yes
Addition: No
Conversion: No

11 Ashford Lane, Andover, Essex County, Massachusetts, United States, 01810, 11

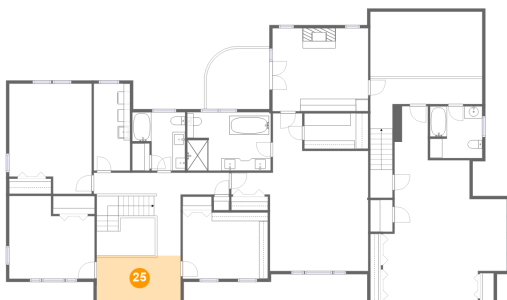
24 Floor 3 - Primary Bath



Max Dimensions: 13'5" x 9'4"
Calculated Area: 125 sq. ft
Included: Yes

Heated: Yes
Finished: Yes
Enclosed: Yes
Contiguous: Yes
Permitted: Yes
Wet space: Yes
Addition: No
Conversion: No

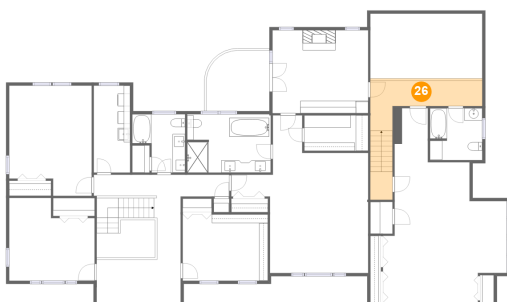
25 Floor 3 - Room



Max Dimensions: 13'6" x 7'3"
Calculated Area: 98 sq. ft
Included: Yes

Heated: Yes
Finished: Yes
Enclosed: Yes
Contiguous: Yes
Permitted: Yes
Wet space: No
Addition: No
Conversion: No

26 Floor 3 - Hall

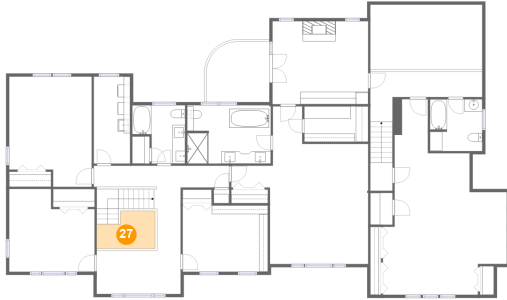


Max Dimensions: 18'0" x 8'1"
Calculated Area: 133 sq. ft
Included: Yes

Heated: Yes
Finished: Yes
Enclosed: Yes
Contiguous: Yes
Permitted: Yes
Wet space: No
Addition: No
Conversion: No

11 Ashford Lane, Andover, Essex County, Massachusetts, United States, 01810, 11

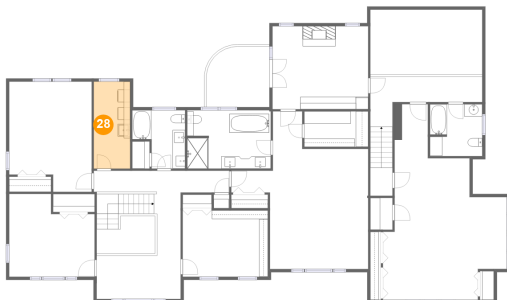
27 Floor 3 - Open To Below



Max Dimensions: 9'4" x 3'11"
Calculated Area: 48 sq. ft
Included: No

Heated: No
Finished: No
Enclosed: No
Contiguous: Yes
Permitted: No
Wet space: No
Addition: No
Conversion: No

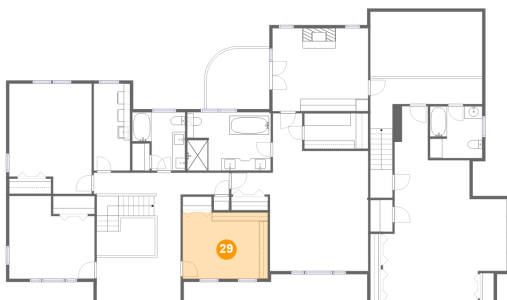
28 Floor 3 - Laundry



Max Dimensions: 5'10" x 13'11"
Calculated Area: 81 sq. ft
Included: Yes

Heated: Yes
Finished: Yes
Enclosed: Yes
Contiguous: Yes
Permitted: Yes
Wet space: No
Addition: No
Conversion: No

29 Floor 3 - Bedroom

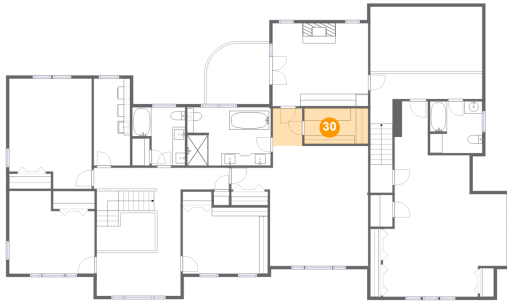


Max Dimensions: 13'8" x 10'8"
Calculated Area: 146 sq. ft
Included: Yes

Heated: Yes
Finished: Yes
Enclosed: Yes
Contiguous: Yes
Permitted: Yes
Wet space: No
Addition: No
Conversion: No

11 Ashford Lane, Andover, Essex County, Massachusetts, United States, 01810, 11

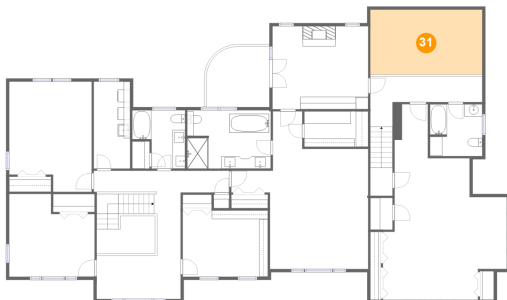
30 Floor 3 - W.I.C.



Max Dimensions: 15'3" x 6'0"
Calculated Area: 87 sq. ft
Included: Yes

Heated: Yes
Finished: Yes
Enclosed: Yes
Contiguous: Yes
Permitted: Yes
Wet space: No
Addition: No
Conversion: No

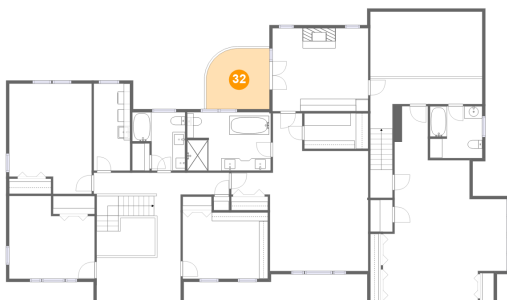
31 Floor 3 - Open To Below



Max Dimensions: 17'11" x 10'5"
Calculated Area: 187 sq. ft
Included: No

Heated: No
Finished: No
Enclosed: No
Contiguous: Yes
Permitted: No
Wet space: No
Addition: No
Conversion: No

32 Floor 3 - Balcony

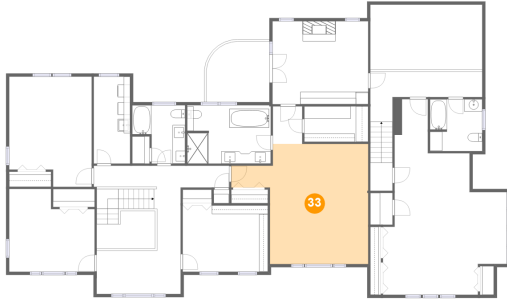


Max Dimensions: 10'1" x 9'9"
Calculated Area: 93 sq. ft
Included: No

Heated: No
Finished: Yes
Enclosed: No
Contiguous: Yes
Permitted: Yes
Wet space: No
Addition: No
Conversion: No

11 Ashford Lane, Andover, Essex County, Massachusetts, United States, 01810, 11

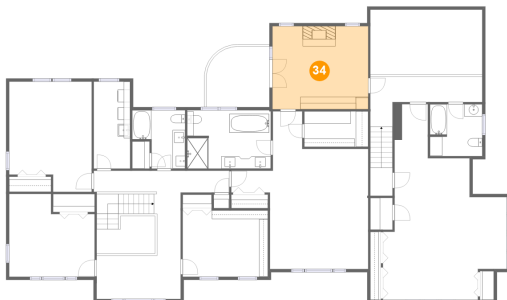
33 Floor 3 - Primary Bedroom



Max Dimensions: 22'0" x 19'3"
Calculated Area: 324 sq. ft
Included: Yes

Heated: Yes
Finished: Yes
Enclosed: Yes
Contiguous: Yes
Permitted: Yes
Wet space: No
Addition: No
Conversion: No

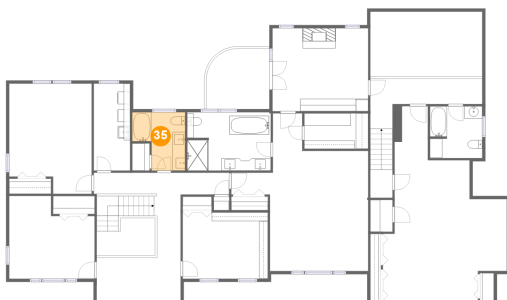
34 Floor 3 - Den



Max Dimensions: 15'4" x 13'4"
Calculated Area: 205 sq. ft
Included: Yes

Heated: Yes
Finished: Yes
Enclosed: Yes
Contiguous: Yes
Permitted: Yes
Wet space: No
Addition: No
Conversion: No

35 Floor 3 - Bath

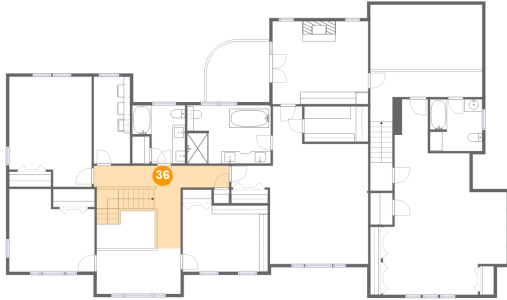


Max Dimensions: 8'6" x 9'4"
Calculated Area: 65 sq. ft
Included: Yes

Heated: Yes
Finished: Yes
Enclosed: Yes
Contiguous: Yes
Permitted: Yes
Wet space: Yes
Addition: No
Conversion: No

11 Ashford Lane, Andover, Essex County, Massachusetts, United States, 01810, 11

36 Floor 3 - Hall



Max Dimensions: 21'9" x 13'4"
Calculated Area: 160 sq. ft
Included: Yes

Heated: Yes
Finished: Yes
Enclosed: Yes
Contiguous: Yes
Permitted: Yes
Wet space: No
Addition: No
Conversion: No

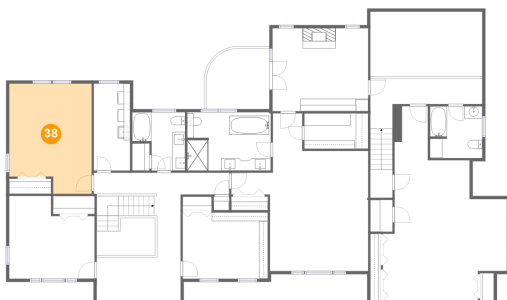
37 Floor 3 - Bath



Max Dimensions: 8'5" x 8'4"
Calculated Area: 69 sq. ft
Included: Yes

Heated: Yes
Finished: Yes
Enclosed: Yes
Contiguous: Yes
Permitted: Yes
Wet space: Yes
Addition: No
Conversion: No

38 Floor 3 - Bedroom



Max Dimensions: 13'3" x 17'8"
Calculated Area: 215 sq. ft
Included: Yes

Heated: Yes
Finished: Yes
Enclosed: Yes
Contiguous: Yes
Permitted: Yes
Wet space: No
Addition: No
Conversion: No

11 Ashford Lane, Andover, Essex County, Massachusetts, United States, 01810, 11

39 Floor 3 - Bedroom



Max Dimensions: 13'8" x 13'3"
Calculated Area: 159 sq. ft
Included: Yes

Heated: Yes
Finished: Yes
Enclosed: Yes
Contiguous: Yes
Permitted: Yes
Wet space: No
Addition: No
Conversion: No

40 Floor 3 - In-law Suite



Max Dimensions: 19'11" x 31'4"
Calculated Area: 415 sq. ft
Included: Yes

Heated: Yes
Finished: Yes
Enclosed: Yes
Contiguous: Yes
Permitted: Yes
Wet space: No
Addition: No
Conversion: No