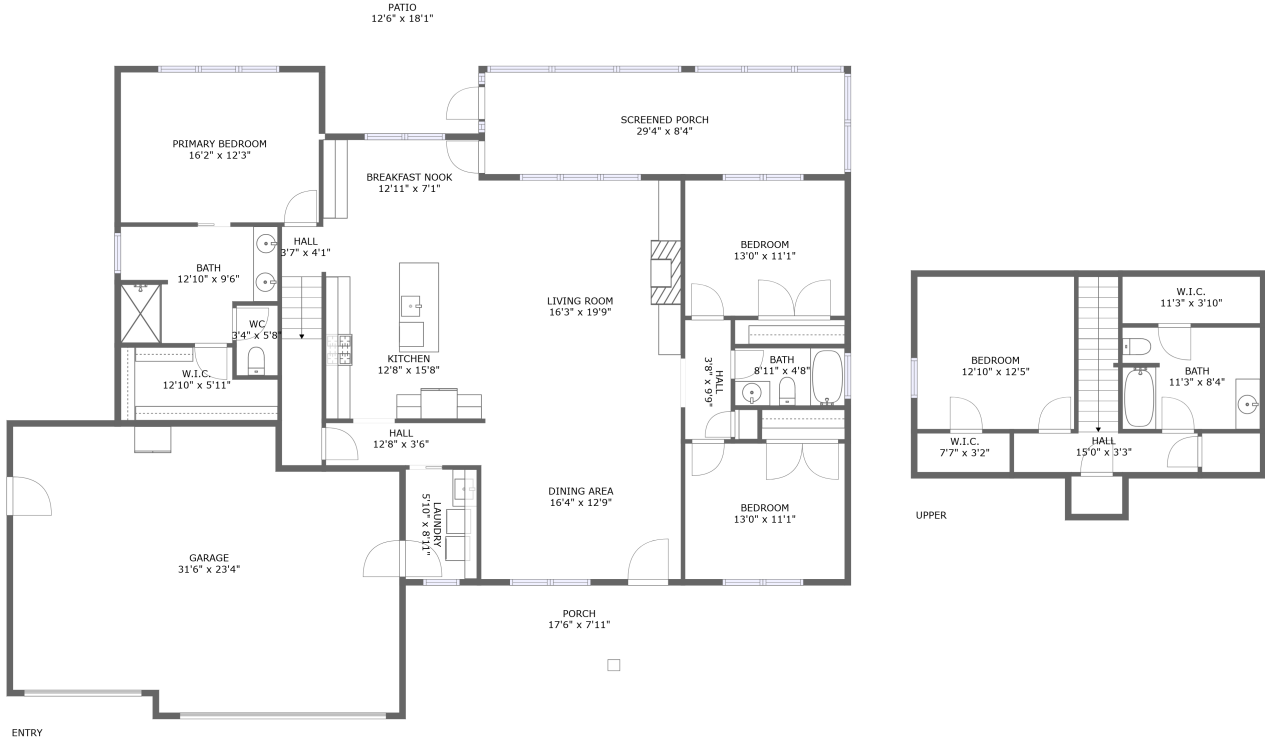



202 Savannah Drive, Mecca Gardens, Roanoke, Roanoke, Virginia, United States, 24012



Property Summary

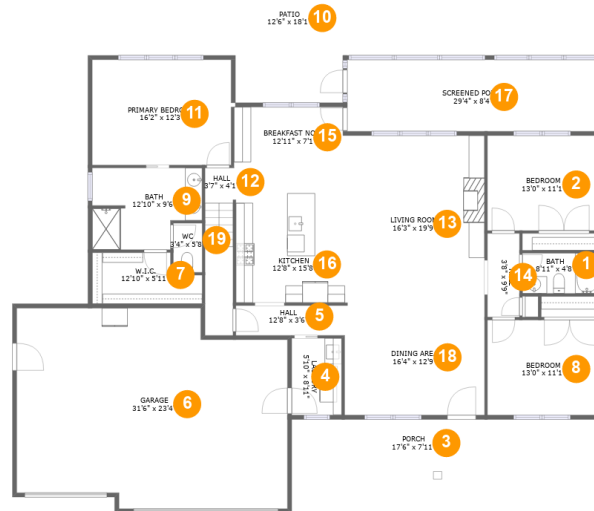
 **1** garages  **4** bedrooms  **3** bathrooms  **0** half baths

 **2** floors

 **2,405** Gross Living Area sqft

 **3,790** total sqft

202 Savannah Drive, Mecca Gardens, Roanoke, Roanoke, Virginia, United States, 24012



Room Dimensions

Floor 1

Total sqft: 3282

Living area: 1945

#	Room name	Dimensions	Area (sqft)	Counted as Living Area
1	Bath	8'11" x 4'8"	42 sq. ft	Yes
2	Bedroom	13'0" x 11'1"	144 sq. ft	Yes
3	Porch	17'6" x 7'11"	129 sq. ft	No
4	Laundry	5'10" x 8'11"	52 sq. ft	Yes
5	Hall	12'8" x 3'6"	44 sq. ft	Yes
6	Garage	31'6" x 23'4"	677 sq. ft	No
7	W.i.c.	12'10" x 5'11"	67 sq. ft	Yes
8	Bedroom	13'0" x 11'1"	144 sq. ft	Yes
9	Bath	12'10" x 9'6"	108 sq. ft	Yes
10	Patio	12'6" x 18'1"	227 sq. ft	No
11	Primary Bedroom	16'2" x 12'3"	198 sq. ft	Yes

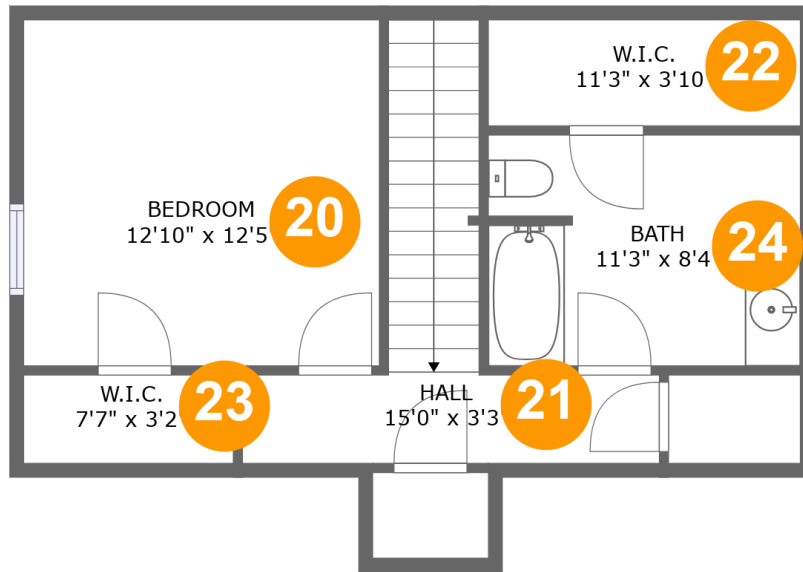
Scan captured on Tue, 27 Aug 2024 15:48:37 GMT

Information is calculated by CubiCasa technology; deemed highly reliable but not guaranteed.

**202 Savannah Drive, Mecca Gardens, Roanoke,
Roanoke, Virginia, United States, 24012**

#	Room name	Dimensions	Area (sqft)	Counted as Living Area
12	Hall	3'7" x 4'1"	65 sq. ft	Yes
13	Living Room	16'3" x 19'9"	322 sq. ft	Yes
14	Hall	3'8" x 9'9"	36 sq. ft	Yes
15	Breakfast Nook	12'11" x 7'1"	91 sq. ft	Yes
16	Kitchen	12'8" x 15'8"	199 sq. ft	Yes
17	Screened Porch	29'4" x 8'4"	244 sq. ft	No
18	Dining Area	16'4" x 12'9"	208 sq. ft	Yes
19	Wc	3'4" x 5'8"	19 sq. ft	Yes

202 Savannah Drive, Mecca Gardens, Roanoke, Roanoke, Virginia, United States, 24012



Room Dimensions

Floor 2

Total sqft: 508

Living area: 460

#	Room name	Dimensions	Area (sqft)	Counted as Living Area
20	Bedroom	12'10" x 12'5"	137 sq. ft	Yes
21	Hall	15'0" x 3'3"	89 sq. ft	Yes
22	W.i.c.	11'3" x 3'10"	43 sq. ft	Yes
23	W.i.c.	7'7" x 3'2"	24 sq. ft	Yes
24	Bath	11'3" x 8'4"	92 sq. ft	Yes

202 Savannah Drive, Mecca Gardens, Roanoke, Roanoke, Virginia, United States, 24012

1 Floor 1 - Bath



Dimensions: 8'11" x 4'8"
Area: 42 sq. ft
Counted as Living Area:
Yes

Heated: Yes
Finished: Yes
Enclosed: Yes
Contiguous:
Yes
Permitted: Yes
Wet Space: Yes
Addition: No
Conversion: No

2 Floor 1 - Bedroom



Dimensions: 13'0" x 11'1"
Area: 144 sq. ft
Counted as Living Area:
Yes

Heated: Yes
Finished: Yes
Enclosed: Yes
Contiguous:
Yes
Permitted: Yes
Wet Space: No
Addition: No
Conversion: No

202 Savannah Drive, Mecca Gardens, Roanoke, Roanoke, Virginia, United States, 24012

3 Floor 1 - Porch



Dimensions: 17'6" x 7'11"
Area: 129 sq. ft
Counted as Living Area: No

Heated: No
Finished: Yes
Enclosed: No
Contiguous: Yes
Permitted: Yes
Wet Space: No
Addition: No
Conversion: No

4 Floor 1 - Laundry



Dimensions: 5'10" x 8'11"
Area: 52 sq. ft
Counted as Living Area:
Yes

Heated: Yes
Finished: Yes
Enclosed: Yes
Contiguous:
Yes
Permitted: Yes
Wet Space: No
Addition: No
Conversion: No

5 Floor 1 - Hall



Dimensions: 12'8" x 3'6"
Area: 44 sq. ft
Counted as Living Area:
Yes

Heated: Yes
Finished: Yes
Enclosed: Yes
Contiguous:
Yes
Permitted: Yes
Wet Space: No
Addition: No
Conversion: No

202 Savannah Drive, Mecca Gardens, Roanoke, Roanoke, Virginia, United States, 24012

6 Floor 1 - Garage



Dimensions: 31'6" x 23'4"
Area: 677 sq. ft
Counted as Living Area: No

Heated: No
Finished: No
Enclosed: Yes
Contiguous: Yes
Permitted: Yes
Wet Space: No
Addition: No
Conversion: No

7 Floor 1 - W.i.c.



Dimensions: 12'10" x 5'11"
Area: 67 sq. ft
Counted as Living Area:
Yes

Heated: Yes
Finished: Yes
Enclosed: Yes
Contiguous:
Yes
Permitted: Yes
Wet Space: No
Addition: No
Conversion: No

8 Floor 1 - Bedroom



Dimensions: 13'0" x 11'1"
Area: 144 sq. ft
Counted as Living Area:
Yes

Heated: Yes
Finished: Yes
Enclosed: Yes
Contiguous:
Yes
Permitted: Yes
Wet Space: No
Addition: No
Conversion: No

**202 Savannah Drive, Mecca Gardens, Roanoke,
Roanoke, Virginia, United States, 24012****9 Floor 1 - Bath**

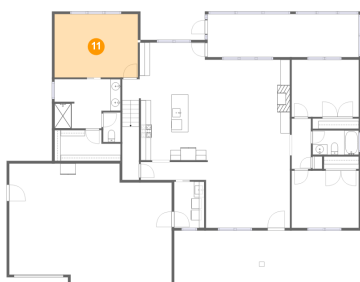
Dimensions: 12'10" x 9'6"
Area: 108 sq. ft
Counted as Living Area:
Yes

Heated: Yes
Finished: Yes
Enclosed: Yes
Contiguous:
Yes
Permitted: Yes
Wet Space: Yes
Addition: No
Conversion: No

10 Floor 1 - Patio

Dimensions: 12'6" x 18'1"
Area: 227 sq. ft
Counted as Living Area: No

Heated: No
Finished: Yes
Enclosed: No
Contiguous: Yes
Permitted: Yes
Wet Space: No
Addition: No
Conversion: No

11 Floor 1 - Primary Bedroom

Dimensions: 16'2" x 12'3"
Area: 198 sq. ft
Counted as Living Area:
Yes

Heated: Yes
Finished: Yes
Enclosed: Yes
Contiguous:
Yes
Permitted: Yes
Wet Space: No
Addition: No
Conversion: No

202 Savannah Drive, Mecca Gardens, Roanoke, Roanoke, Virginia, United States, 24012

12 Floor 1 - Hall



Dimensions: 3'7" x 4'1"
Area: 65 sq. ft
Counted as Living Area:
Yes

Heated: Yes
Finished: Yes
Enclosed: Yes
Contiguous:
Yes
Permitted: Yes
Wet Space: No
Addition: No
Conversion: No

13 Floor 1 - Living Room



Dimensions: 16'3" x 19'9"
Area: 322 sq. ft
Counted as Living Area:
Yes

Heated: Yes
Finished: Yes
Enclosed: Yes
Contiguous:
Yes
Permitted: Yes
Wet Space: No
Addition: No
Conversion: No

14 Floor 1 - Hall



Dimensions: 3'8" x 9'9"
Area: 36 sq. ft
Counted as Living Area:
Yes

Heated: Yes
Finished: Yes
Enclosed: Yes
Contiguous:
Yes
Permitted: Yes
Wet Space: No
Addition: No
Conversion: No

202 Savannah Drive, Mecca Gardens, Roanoke, Roanoke, Virginia, United States, 24012

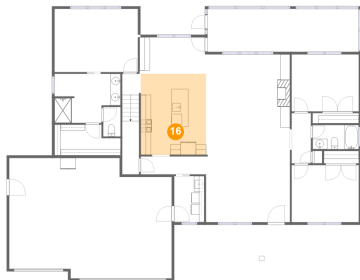
15 Floor 1 - Breakfast Nook



Dimensions: 12'11" x 7'1"
Area: 91 sq. ft
Counted as Living Area:
Yes

Heated: Yes
Finished: Yes
Enclosed: Yes
Contiguous:
Yes
Permitted: Yes
Wet Space: No
Addition: No
Conversion: No

16 Floor 1 - Kitchen



Dimensions: 12'8" x 15'8"
Area: 199 sq. ft
Counted as Living Area:
Yes

Heated: Yes
Finished: Yes
Enclosed: Yes
Contiguous:
Yes
Permitted: Yes
Wet Space: No
Addition: No
Conversion: No

17 Floor 1 - Screened Porch



Dimensions: 29'4" x 8'4"
Area: 244 sq. ft
Counted as Living Area: No

Heated: No
Finished: Yes
Enclosed: No
Contiguous: Yes
Permitted: Yes
Wet Space: No
Addition: No
Conversion: No

202 Savannah Drive, Mecca Gardens, Roanoke, Roanoke, Virginia, United States, 24012

18 Floor 1 - Dining Area



Dimensions: 16'4" x 12'9"
Area: 208 sq. ft
Counted as Living Area:
Yes

Heated: Yes
Finished: Yes
Enclosed: Yes
Contiguous:
Yes
Permitted: Yes
Wet Space: No
Addition: No
Conversion: No

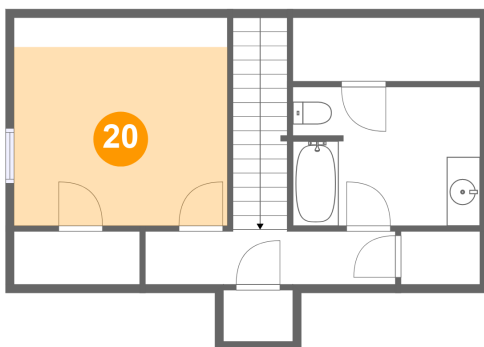
19 Floor 1 - Wc



Dimensions: 3'4" x 5'8"
Area: 19 sq. ft
Counted as Living Area:
Yes

Heated: Yes
Finished: Yes
Enclosed: Yes
Contiguous:
Yes
Permitted: Yes
Wet Space: Yes
Addition: No
Conversion: No

20 Floor 2 - Bedroom

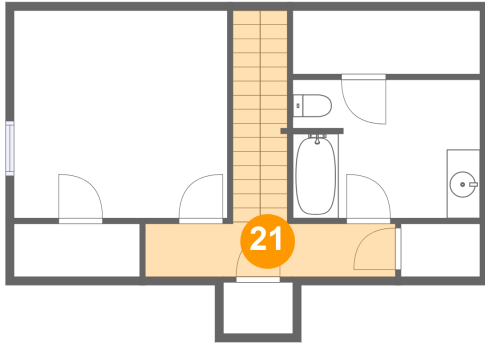


Dimensions: 12'10" x 12'5"
Area: 137 sq. ft
Counted as Living Area:
Yes

Heated: Yes
Finished: Yes
Enclosed: Yes
Contiguous:
Yes
Permitted: Yes
Wet Space: No
Addition: No
Conversion: No

202 Savannah Drive, Mecca Gardens, Roanoke, Roanoke, Virginia, United States, 24012

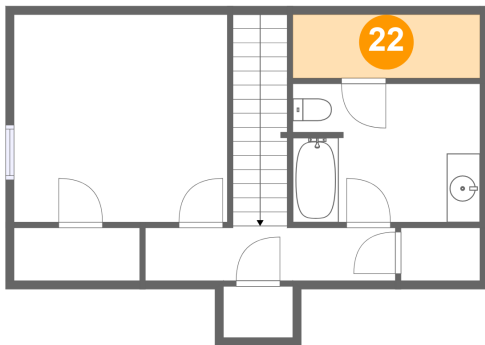
21 Floor 2 - Hall



Dimensions: 15'0" x 3'3"
Area: 89 sq. ft
Counted as Living Area:
Yes

Heated: Yes
Finished: Yes
Enclosed: Yes
Contiguous:
Yes
Permitted: Yes
Wet Space: No
Addition: No
Conversion: No

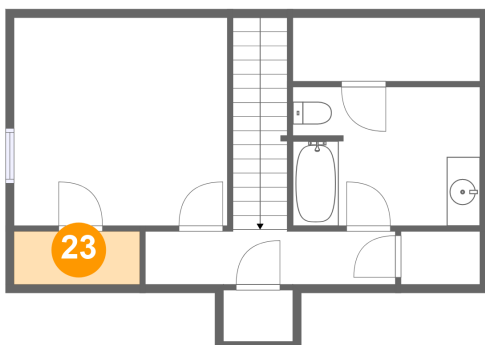
22 Floor 2 - W.i.c.



Dimensions: 11'3" x 3'10"
Area: 43 sq. ft
Counted as Living Area:
Yes

Heated: Yes
Finished: Yes
Enclosed: Yes
Contiguous:
Yes
Permitted: Yes
Wet Space: No
Addition: No
Conversion: No

23 Floor 2 - W.i.c.

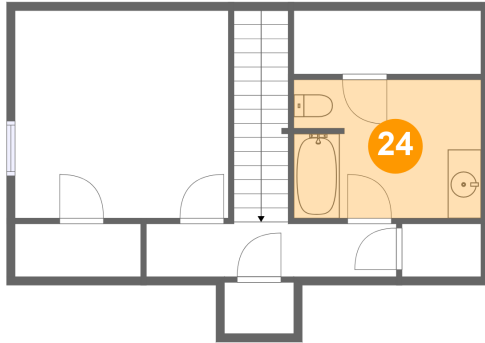


Dimensions: 7'7" x 3'2"
Area: 24 sq. ft
Counted as Living Area:
Yes

Heated: Yes
Finished: Yes
Enclosed: Yes
Contiguous:
Yes
Permitted: Yes
Wet Space: No
Addition: No
Conversion: No

**202 Savannah Drive, Mecca Gardens, Roanoke,
Roanoke, Virginia, United States, 24012**

24 Floor 2 - Bath



Dimensions: 11'3" x 8'4"
Area: 92 sq. ft
Counted as Living Area:
Yes

Heated: Yes
Finished: Yes
Enclosed: Yes
Contiguous:
Yes
Permitted: Yes
Wet Space: Yes
Addition: No
Conversion: No