

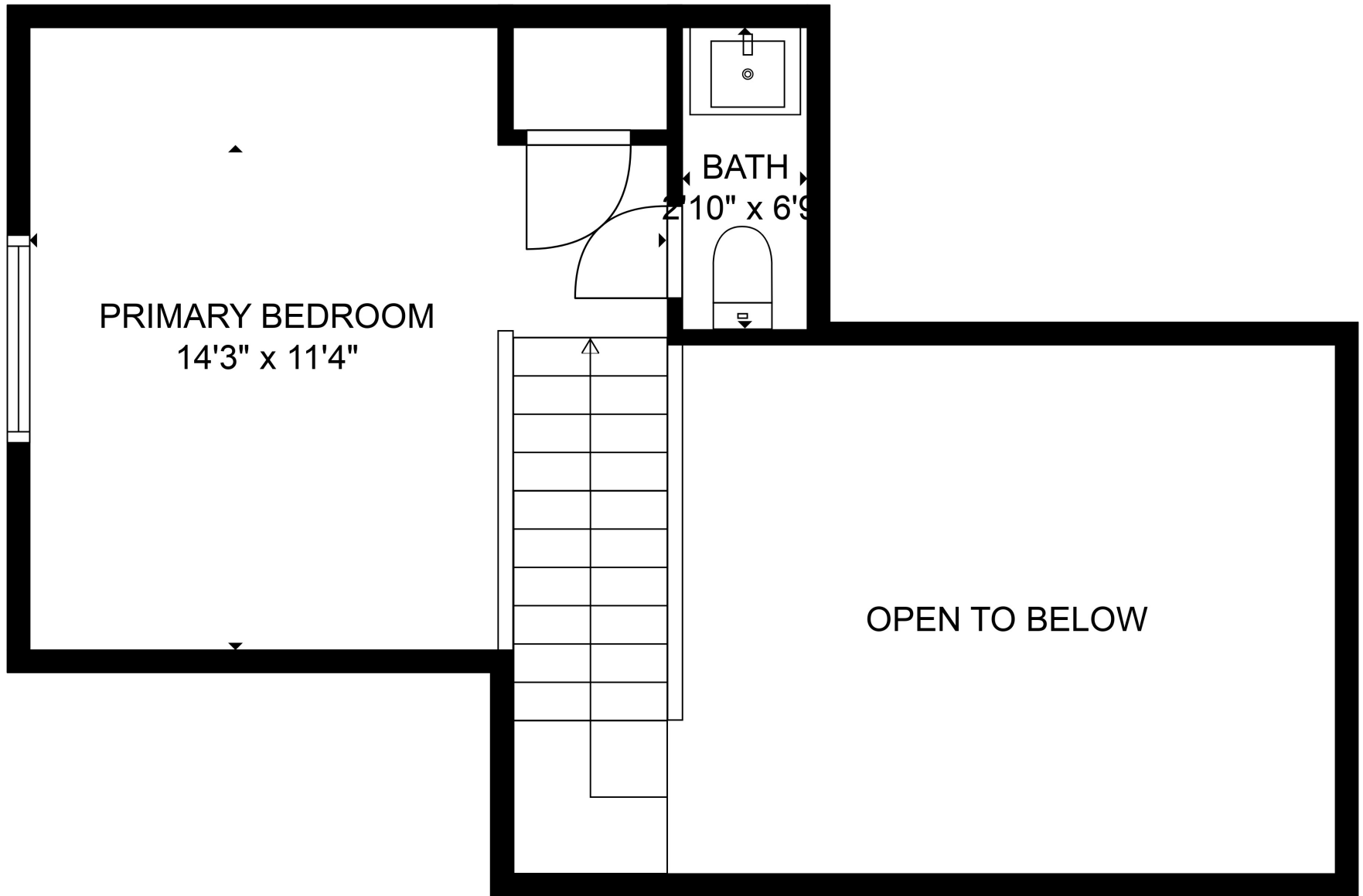
TOTAL: 1246 sq. ft

FLOOR 1: 1061 sq. ft, FLOOR 2: 185 sq. ft

EXCLUDED AREAS: DECK: 318 sq. ft, FIREPLACE: 8 sq. ft, LOW CEILING: 56 sq. ft,

OPEN TO BELOW: 174 sq. ft

SIZES AND DIMENSIONS ARE APPROXIMATE, ACTUAL MAY VARY.



PRIMARY BEDROOM
14'3" x 11'4"

BATH
7'10" x 6'9"

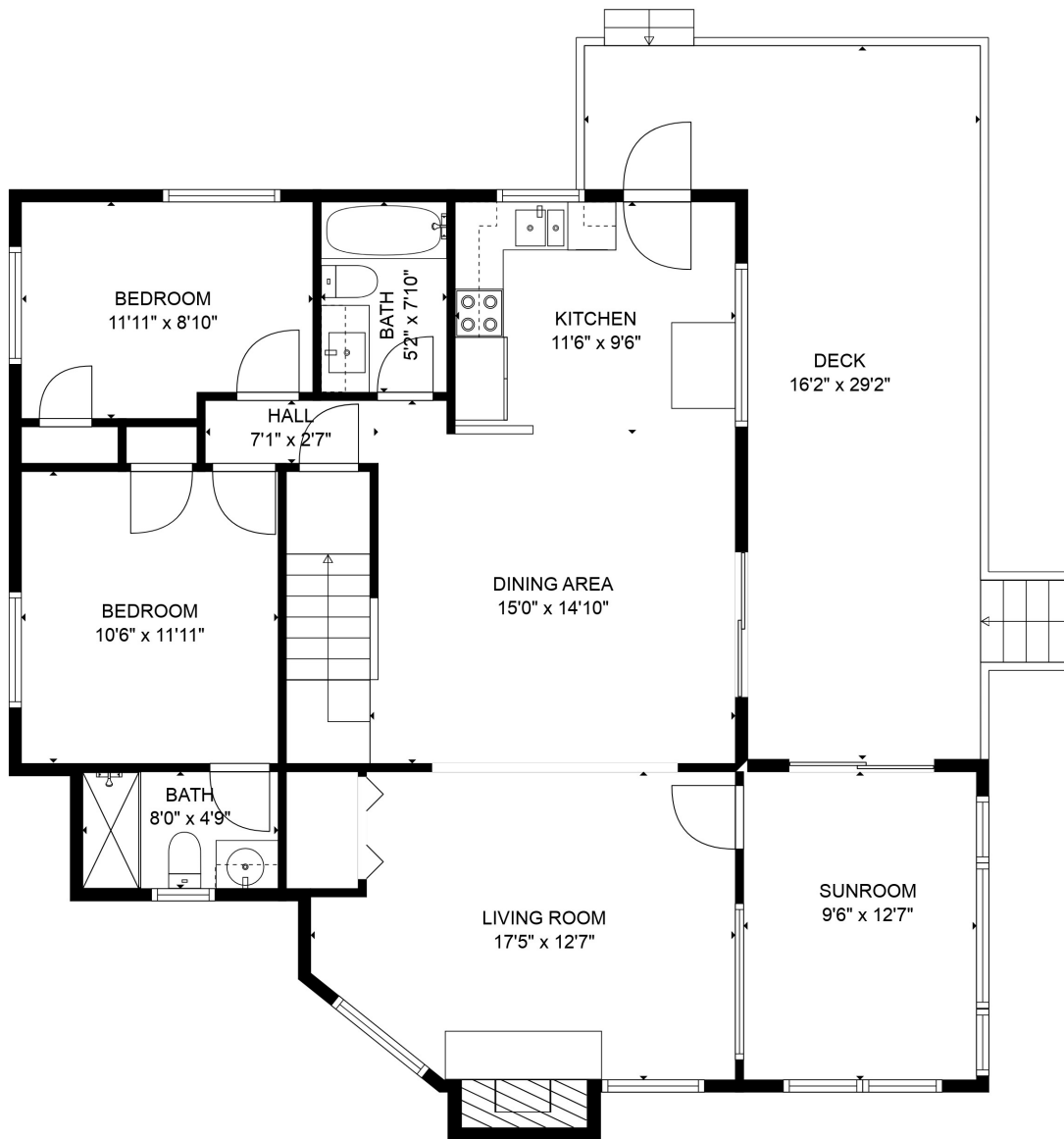
OPEN TO BELOW

TOTAL: 1246 sq. ft

FLOOR 1: 1061 sq. ft, FLOOR 2: 185 sq. ft

EXCLUDED AREAS: DECK: 318 sq. ft, FIREPLACE: 8 sq. ft, LOW CEILING: 56 sq. ft,
OPEN TO BELOW: 174 sq. ft

SIZES AND DIMENSIONS ARE APPROXIMATE, ACTUAL MAY VARY.



TOTAL: 1246 sq. ft

FLOOR 1: 1061 sq. ft, FLOOR 2: 185 sq. ft

EXCLUDED AREAS: DECK: 318 sq. ft, FIREPLACE: 8 sq. ft, LOW CEILING: 56 sq. ft,
OPEN TO BELOW: 174 sq. ft

SIZES AND DIMENSIONS ARE APPROXIMATE, ACTUAL MAY VARY.