





215 Bermuda Drive, Westlake Corner, Hardy, Franklin County, Virginia, United States, 24101

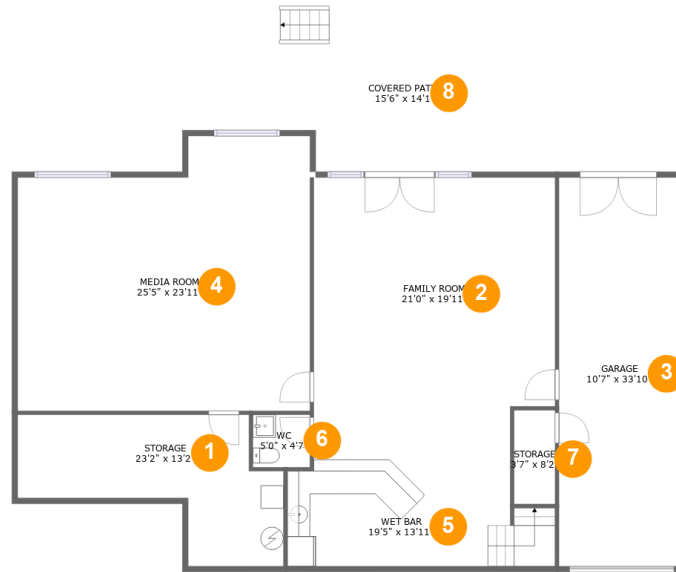


Property Summary

 **2** garages  **3** bedrooms  **2** bathrooms  **2** half baths

 **2** floors  **3,382** Gross Living Area sqft  **5,317** total sqft

**215 Bermuda Drive, Westlake Corner, Hardy,
Franklin County, Virginia, United States, 24101**



Room Dimensions

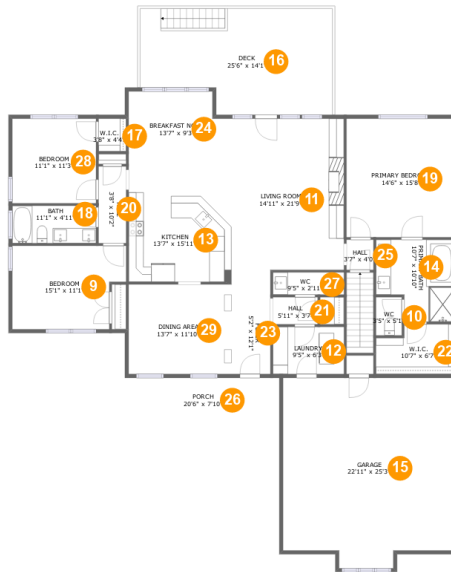
Floor 1

Total sqft: 2225

Living area: 1359

#	Room name	Dimensions	Area (sqft)	Counted as Living Area
1	Storage	23'2" x 13'2"	202 sq. ft	No
2	Family Room	21'0" x 19'11"	418 sq. ft	Yes
3	Garage	10'7" x 33'10"	357 sq. ft	No
4	Media Room	25'5" x 23'11"	555 sq. ft	Yes
5	Wet Bar	19'5" x 13'11"	276 sq. ft	Yes
6	Wc	5'0" x 4'7"	23 sq. ft	Yes
7	Storage	3'7" x 8'2"	29 sq. ft	No
8	Covered Patio	15'6" x 14'1"	228 sq. ft	No

215 Bermuda Drive, Westlake Corner, Hardy, Franklin County, Virginia, United States, 24101



Room Dimensions

Floor 2

Total sqft: 3092

Living area: 2023

#	Room name	Dimensions	Area (sqft)	Counted as Living Area
9	Bedroom	15'1" x 11'1"	153 sq. ft	Yes
10	Wc	3'5" x 5'1"	17 sq. ft	Yes
11	Living Room	14'11" x 21'9"	308 sq. ft	Yes
12	Laundry	9'5" x 6'3"	59 sq. ft	Yes
13	Kitchen	13'7" x 15'11"	215 sq. ft	Yes
14	Primary Bath	10'7" x 10'10"	101 sq. ft	Yes
15	Garage	22'11" x 25'3"	540 sq. ft	No
16	Deck	25'6" x 14'1"	319 sq. ft	No
17	W.i.c.	3'8" x 4'4"	16 sq. ft	Yes
18	Bath	11'1" x 4'11"	55 sq. ft	Yes
19	Primary Bedroom	14'6" x 15'8"	227 sq. ft	Yes

Scan captured on Wed, 21 Aug 2024 20:09:57 GMT

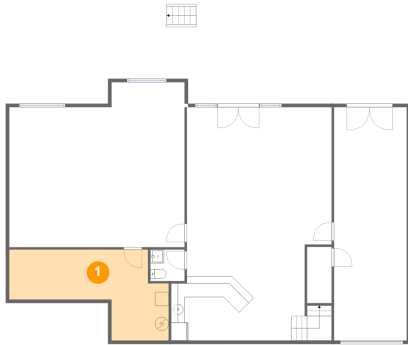
Information is calculated by CubiCasa technology; deemed highly reliable but not guaranteed.

**215 Bermuda Drive, Westlake Corner, Hardy,
Franklin County, Virginia, United States, 24101**

#	Room name	Dimensions	Area (sqft)	Counted as Living Area
20	Hall	3'8" x 10'2"	37 sq. ft	Yes
21	Hall	5'11" x 3'7"	21 sq. ft	Yes
22	W.i.c.	10'7" x 6'7"	63 sq. ft	Yes
23	Foyer	5'2" x 12'1"	62 sq. ft	Yes
24	Breakfast Nook	13'7" x 9'3"	117 sq. ft	Yes
25	Hall	3'7" x 4'0"	14 sq. ft	Yes
26	Porch	20'6" x 7'10"	162 sq. ft	No
27	Wc	9'5" x 2'11"	28 sq. ft	Yes
28	Bedroom	11'1" x 11'3"	124 sq. ft	Yes
29	Dining Area	13'7" x 11'10"	162 sq. ft	Yes

215 Bermuda Drive, Westlake Corner, Hardy, Franklin County, Virginia, United States, 24101

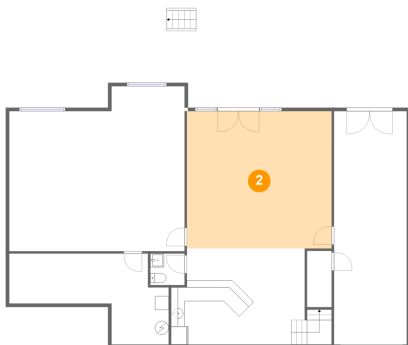
1 Floor 1 - Storage



Dimensions: 23'2" x 13'2"
Area: 202 sq. ft
Counted as Living Area: No

Heated: No
Finished: No
Enclosed: No
Contiguous: Yes
Permitted: Yes
Wet Space: No
Addition: No
Conversion: No

2 Floor 1 - Family Room

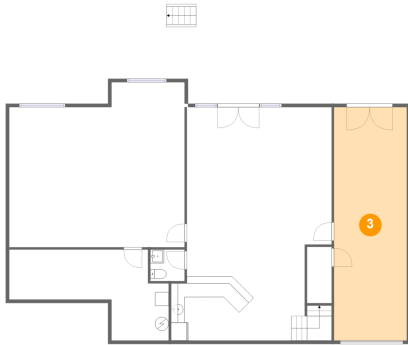


Dimensions: 21'0" x 19'11"
Area: 418 sq. ft
Counted as Living Area:
Yes

Heated: Yes
Finished: Yes
Enclosed: Yes
Contiguous:
Yes
Permitted: Yes
Wet Space: No
Addition: No
Conversion: No

215 Bermuda Drive, Westlake Corner, Hardy, Franklin County, Virginia, United States, 24101

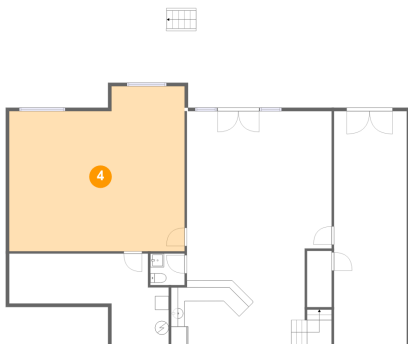
3 Floor 1 - Garage



Dimensions: 10'7" x 33'10"
Area: 357 sq. ft
Counted as Living Area: No

Heated: No
Finished: No
Enclosed: Yes
Contiguous: Yes
Permitted: Yes
Wet Space: No
Addition: No
Conversion: No

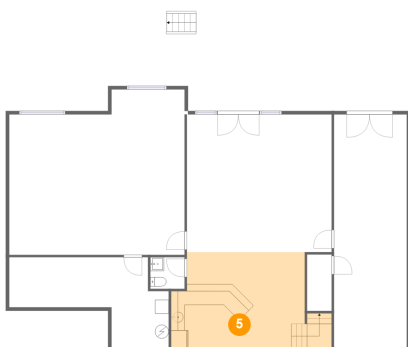
4 Floor 1 - Media Room



Dimensions: 25'5" x 23'11"
Area: 555 sq. ft
Counted as Living Area:
Yes

Heated: Yes
Finished: Yes
Enclosed: Yes
Contiguous:
Yes
Permitted: Yes
Wet Space: No
Addition: No
Conversion: No

5 Floor 1 - Wet Bar

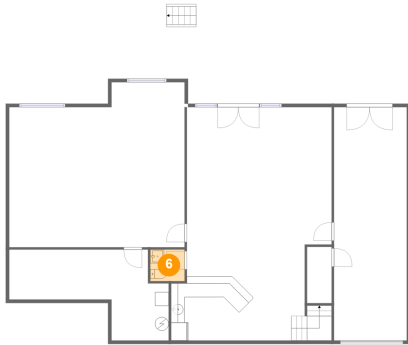


Dimensions: 19'5" x 13'11"
Area: 276 sq. ft
Counted as Living Area:
Yes

Heated: Yes
Finished: Yes
Enclosed: Yes
Contiguous:
Yes
Permitted: Yes
Wet Space: No
Addition: No
Conversion: No

**215 Bermuda Drive, Westlake Corner, Hardy,
Franklin County, Virginia, United States, 24101**

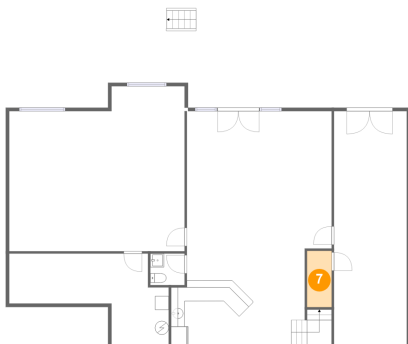
6 Floor 1 - Wc



Dimensions: 5'0" x 4'7"
Area: 23 sq. ft
Counted as Living Area:
Yes

Heated: Yes
Finished: Yes
Enclosed: Yes
Contiguous:
Yes
Permitted: Yes
Wet Space: Yes
Addition: No
Conversion: No

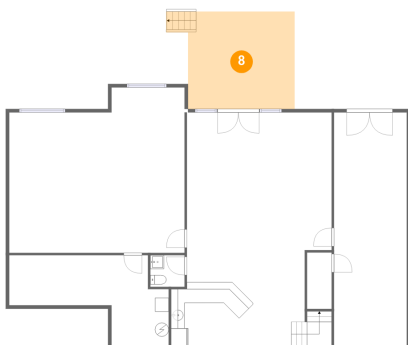
7 Floor 1 - Storage



Dimensions: 3'7" x 8'2"
Area: 29 sq. ft
Counted as Living Area: No

Heated: No
Finished: No
Enclosed: No
Contiguous: Yes
Permitted: Yes
Wet Space: No
Addition: No
Conversion: No

8 Floor 1 - Covered Patio

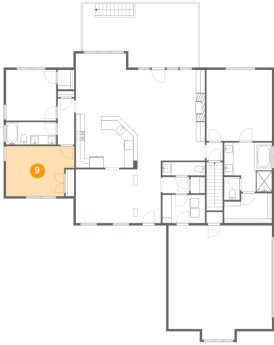


Dimensions: 15'6" x 14'1"
Area: 228 sq. ft
Counted as Living Area: No

Heated: No
Finished: Yes
Enclosed: No
Contiguous: Yes
Permitted: Yes
Wet Space: No
Addition: No
Conversion: No

215 Bermuda Drive, Westlake Corner, Hardy, Franklin County, Virginia, United States, 24101

9 Floor 2 - Bedroom



Dimensions: 15'1" x 11'1"
Area: 153 sq. ft
Counted as Living Area:
Yes

Heated: Yes
Finished: Yes
Enclosed: Yes
Contiguous:
Yes
Permitted: Yes
Wet Space: No
Addition: No
Conversion: No

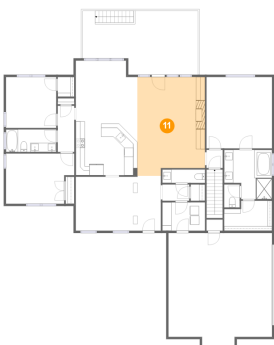
10 Floor 2 - Wc



Dimensions: 3'5" x 5'1"
Area: 17 sq. ft
Counted as Living Area:
Yes

Heated: Yes
Finished: Yes
Enclosed: Yes
Contiguous:
Yes
Permitted: Yes
Wet Space: Yes
Addition: No
Conversion: No

11 Floor 2 - Living Room



Dimensions: 14'11" x 21'9"
Area: 308 sq. ft
Counted as Living Area:
Yes

Heated: Yes
Finished: Yes
Enclosed: Yes
Contiguous:
Yes
Permitted: Yes
Wet Space: No
Addition: No
Conversion: No

215 Bermuda Drive, Westlake Corner, Hardy, Franklin County, Virginia, United States, 24101

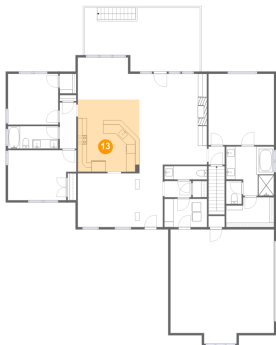
12 Floor 2 - Laundry



Dimensions: 9'5" x 6'3"
Area: 59 sq. ft
Counted as Living Area:
Yes

Heated: Yes
Finished: Yes
Enclosed: Yes
Contiguous:
Yes
Permitted: Yes
Wet Space: No
Addition: No
Conversion: No

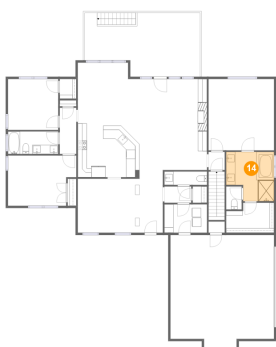
13 Floor 2 - Kitchen



Dimensions: 13'7" x 15'11"
Area: 215 sq. ft
Counted as Living Area:
Yes

Heated: Yes
Finished: Yes
Enclosed: Yes
Contiguous:
Yes
Permitted: Yes
Wet Space: No
Addition: No
Conversion: No

14 Floor 2 - Primary Bath

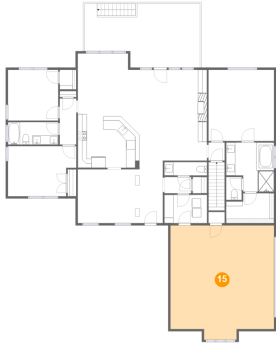


Dimensions: 10'7" x 10'10"
Area: 101 sq. ft
Counted as Living Area:
Yes

Heated: Yes
Finished: Yes
Enclosed: Yes
Contiguous:
Yes
Permitted: Yes
Wet Space: Yes
Addition: No
Conversion: No

215 Bermuda Drive, Westlake Corner, Hardy, Franklin County, Virginia, United States, 24101

15 Floor 2 - Garage



Dimensions: 22'11" x 25'3"
Area: 540 sq. ft
Counted as Living Area: No

Heated: No
Finished: No
Enclosed: Yes
Contiguous: Yes
Permitted: Yes
Wet Space: No
Addition: No
Conversion: No

16 Floor 2 - Deck



Dimensions: 25'6" x 14'1"
Area: 319 sq. ft
Counted as Living Area: No

Heated: No
Finished: Yes
Enclosed: No
Contiguous: Yes
Permitted: Yes
Wet Space: No
Addition: No
Conversion: No

17 Floor 2 - W.i.c.



Dimensions: 3'8" x 4'4"
Area: 16 sq. ft
Counted as Living Area:
Yes

Heated: Yes
Finished: Yes
Enclosed: Yes
Contiguous:
Yes
Permitted: Yes
Wet Space: No
Addition: No
Conversion: No

215 Bermuda Drive, Westlake Corner, Hardy, Franklin County, Virginia, United States, 24101

18 Floor 2 - Bath



Dimensions: 11'1" x 4'11"
Area: 55 sq. ft
Counted as Living Area:
Yes

Heated: Yes
Finished: Yes
Enclosed: Yes
Contiguous:
Yes
Permitted: Yes
Wet Space: Yes
Addition: No
Conversion: No

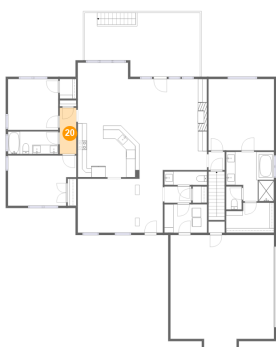
19 Floor 2 - Primary Bedroom



Dimensions: 14'6" x 15'8"
Area: 227 sq. ft
Counted as Living Area:
Yes

Heated: Yes
Finished: Yes
Enclosed: Yes
Contiguous:
Yes
Permitted: Yes
Wet Space: No
Addition: No
Conversion: No

20 Floor 2 - Hall



Dimensions: 3'8" x 10'2"
Area: 37 sq. ft
Counted as Living Area:
Yes

Heated: Yes
Finished: Yes
Enclosed: Yes
Contiguous:
Yes
Permitted: Yes
Wet Space: No
Addition: No
Conversion: No

215 Bermuda Drive, Westlake Corner, Hardy, Franklin County, Virginia, United States, 24101

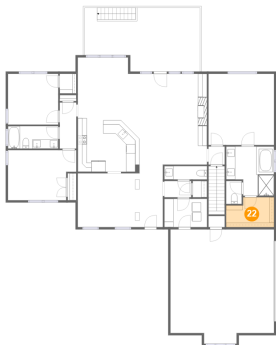
21 Floor 2 - Hall



Dimensions: 5'11" x 3'7"
Area: 21 sq. ft
Counted as Living Area:
Yes

Heated: Yes
Finished: Yes
Enclosed: Yes
Contiguous:
Yes
Permitted: Yes
Wet Space: No
Addition: No
Conversion: No

22 Floor 2 - W.i.c.



Dimensions: 10'7" x 6'7"
Area: 63 sq. ft
Counted as Living Area:
Yes

Heated: Yes
Finished: Yes
Enclosed: Yes
Contiguous:
Yes
Permitted: Yes
Wet Space: No
Addition: No
Conversion: No

23 Floor 2 - Foyer

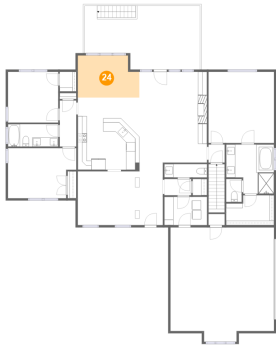


Dimensions: 5'2" x 12'1"
Area: 62 sq. ft
Counted as Living Area:
Yes

Heated: Yes
Finished: Yes
Enclosed: Yes
Contiguous:
Yes
Permitted: Yes
Wet Space: No
Addition: No
Conversion: No

215 Bermuda Drive, Westlake Corner, Hardy, Franklin County, Virginia, United States, 24101

24 Floor 2 - Breakfast Nook



Dimensions: 13'7" x 9'3"
Area: 117 sq. ft
Counted as Living Area:
Yes

Heated: Yes
Finished: Yes
Enclosed: Yes
Contiguous:
Yes
Permitted: Yes
Wet Space: No
Addition: No
Conversion: No

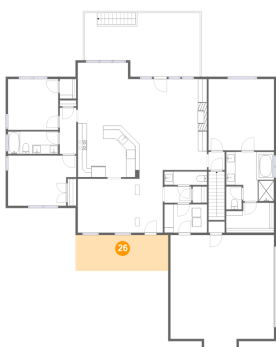
25 Floor 2 - Hall



Dimensions: 3'7" x 4'0"
Area: 14 sq. ft
Counted as Living Area:
Yes

Heated: Yes
Finished: Yes
Enclosed: Yes
Contiguous:
Yes
Permitted: Yes
Wet Space: No
Addition: No
Conversion: No

26 Floor 2 - Porch

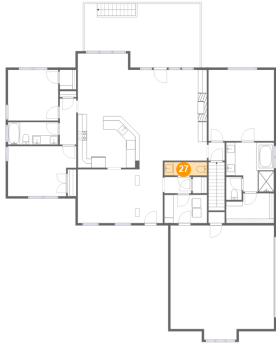


Dimensions: 20'6" x 7'10"
Area: 162 sq. ft
Counted as Living Area: No

Heated: No
Finished: Yes
Enclosed: No
Contiguous: Yes
Permitted: Yes
Wet Space: No
Addition: No
Conversion: No

215 Bermuda Drive, Westlake Corner, Hardy, Franklin County, Virginia, United States, 24101

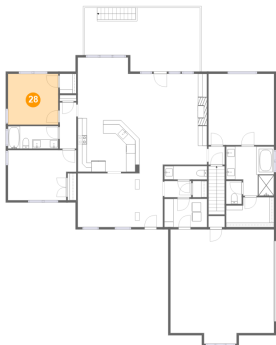
27 Floor 2 - Wc



Dimensions: 9'5" x 2'11"
Area: 28 sq. ft
Counted as Living Area:
Yes

Heated: Yes
Finished: Yes
Enclosed: Yes
Contiguous:
Yes
Permitted: Yes
Wet Space: Yes
Addition: No
Conversion: No

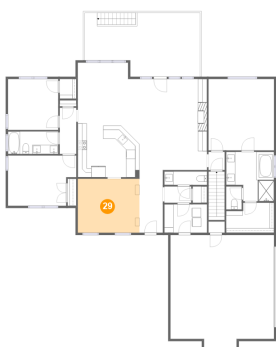
28 Floor 2 - Bedroom



Dimensions: 11'1" x 11'3"
Area: 124 sq. ft
Counted as Living Area:
Yes

Heated: Yes
Finished: Yes
Enclosed: Yes
Contiguous:
Yes
Permitted: Yes
Wet Space: No
Addition: No
Conversion: No

29 Floor 2 - Dining Area



Dimensions: 13'7" x 11'10"
Area: 162 sq. ft
Counted as Living Area:
Yes

Heated: Yes
Finished: Yes
Enclosed: Yes
Contiguous:
Yes
Permitted: Yes
Wet Space: No
Addition: No
Conversion: No