

Home report

29446 Nicholson Drive Northwest, Harvest, Limestone County, Alabama, United States, 35749



Total GLA: 3082 sq. ft

Floor 1: 1629 sq. ft, Floor 2: 1453 sq. ft

Excluded: Garage 430 sq. ft

Property summary

 **2** Floors

 **5** Bedrooms

 **3** Bathrooms

Home report

**29446 Nicholson Drive Northwest, Harvest, Limestone County,
Alabama, United States, 35749**



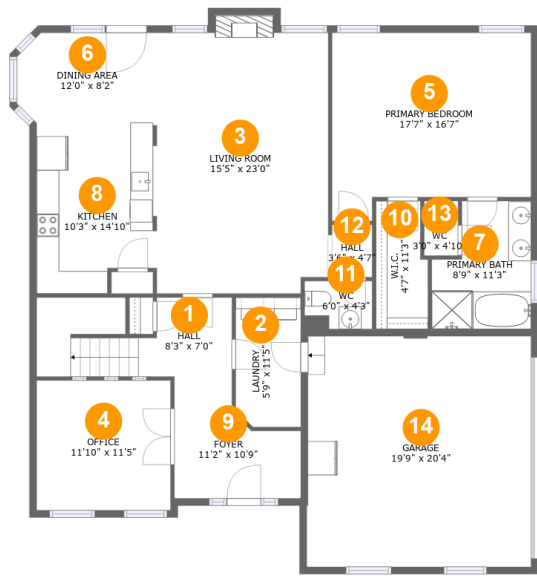
1
Half baths



1
Garages

Home report

29446 Nicholson Drive Northwest, Harvest, Limestone County, Alabama, United States, 35749



Room dimensions

Floor 1

Total:1629sqft Excluded: 430sqft

#		Max Dimensions	sqft	Included
1	Hall	8'3" x 7'0"	109 sq. ft	Yes
2	Laundry	5'9" x 11'5"	64 sq. ft	Yes
3	Living Room	15'5" x 23'0"	358 sq. ft	Yes
4	Office	11'10" x 11'5"	135 sq. ft	Yes
5	Primary Bedroom	17'7" x 16'7"	262 sq. ft	Yes
6	Dining Area	12'0" x 8'2"	94 sq. ft	Yes
7	Primary Bath	8'9" x 11'3"	85 sq. ft	Yes
8	Kitchen	10'3" x 14'10"	143 sq. ft	Yes
9	Foyer	11'2" x 10'9"	92 sq. ft	Yes
10	W.I.C.	4'7" x 11'3"	48 sq. ft	Yes
11	WC	6'0" x 4'3"	25 sq. ft	Yes

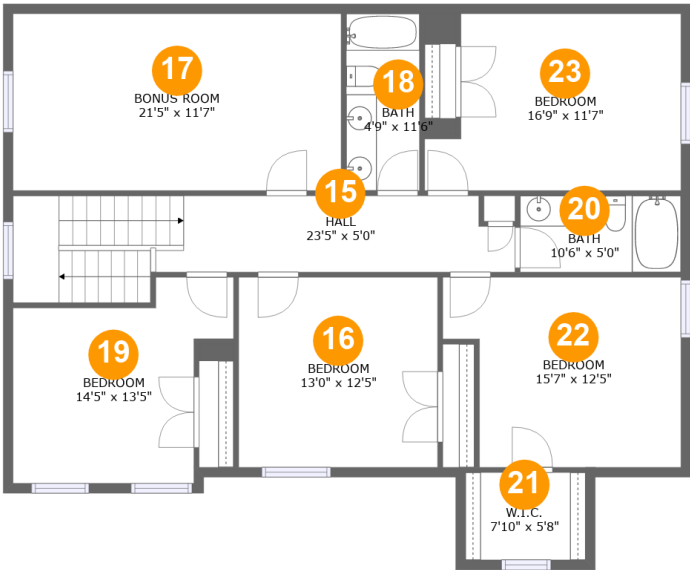
Home report

29446 Nicholson Drive Northwest, Harvest, Limestone County,
Alabama, United States, 35749

#		Max Dimensions	sqft	Included
12	Hall	3'6" x 4'7"	16 sq. ft	Yes
13	WC	3'0" x 4'10"	14 sq. ft	Yes
14	Garage	19'9" x 20'4"	401 sq. ft	No

Home report

29446 Nicholson Drive Northwest, Harvest, Limestone County, Alabama, United States, 35749



Room dimensions

Floor 2 Total:1453sqft Excluded: 0sqft

#		Max Dimensions	sqft	Included
15	Hall	23'5" x 5'0"	176 sq. ft	Yes
16	Bedroom	13'0" x 12'5"	161 sq. ft	Yes
17	Bonus Room	21'5" x 11'7"	247 sq. ft	Yes
18	Bath	4'9" x 11'6"	55 sq. ft	Yes
19	Bedroom	14'5" x 13'5"	151 sq. ft	Yes
20	Bath	10'6" x 5'0"	52 sq. ft	Yes
21	W.I.C.	7'10" x 5'8"	45 sq. ft	Yes
22	Bedroom	15'7" x 12'5"	173 sq. ft	Yes
23	Bedroom	16'9" x 11'7"	174 sq. ft	Yes

29446 Nicholson Drive Northwest, Harvest, Limestone County,
Alabama, United States, 35749

1 Floor 1 - Hall



Max Dimensions: 8'3" x 7'0"
Calculated Area: 109 sq. ft
Included: Yes

Heated: Yes
Finished: Yes
Enclosed: Yes
Contiguous: Yes
Permitted: Yes
Wet space: No
Addition: No
Conversion: No

2 Floor 1 - Laundry



Max Dimensions: 5'9" x 11'5"
Calculated Area: 64 sq. ft
Included: Yes

Heated: Yes
Finished: Yes
Enclosed: Yes
Contiguous: Yes
Permitted: Yes
Wet space: No
Addition: No
Conversion: No

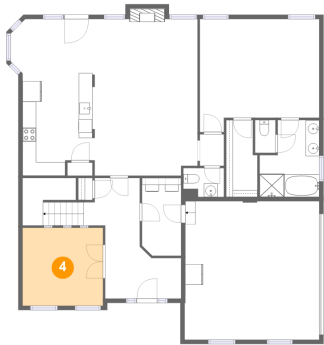
3 Floor 1 - Living Room



Max Dimensions: 15'5" x 23'0"
Calculated Area: 358 sq. ft
Included: Yes

Heated: Yes
Finished: Yes
Enclosed: Yes
Contiguous: Yes
Permitted: Yes
Wet space: No
Addition: No
Conversion: No

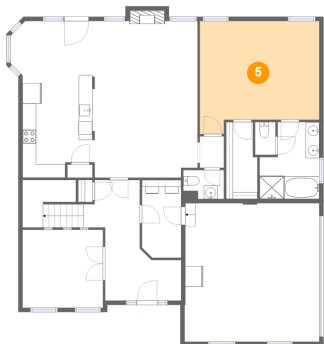
4 Floor 1 - Office



Max Dimensions: 11'10" x 11'5"
Calculated Area: 135 sq. ft
Included: Yes

Heated: Yes
Finished: Yes
Enclosed: Yes
Contiguous: Yes
Permitted: Yes
Wet space: No
Addition: No
Conversion: No

5 Floor 1 - Primary Bedroom



Max Dimensions: 17'7" x 16'7"
Calculated Area: 262 sq. ft
Included: Yes

Heated: Yes
Finished: Yes
Enclosed: Yes
Contiguous: Yes
Permitted: Yes
Wet space: No
Addition: No
Conversion: No

29446 Nicholson Drive Northwest, Harvest, Limestone County,
Alabama, United States, 35749

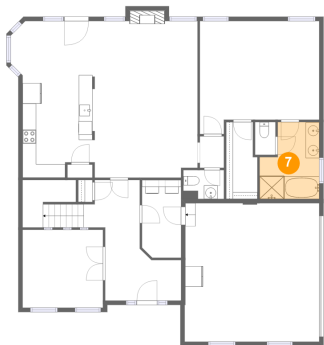
6 Floor 1 - Dining Area



Max Dimensions: 12'0" x 8'2"
Calculated Area: 94 sq. ft
Included: Yes

Heated: Yes
Finished: Yes
Enclosed: Yes
Contiguous: Yes
Permitted: Yes
Wet space: No
Addition: No
Conversion: No

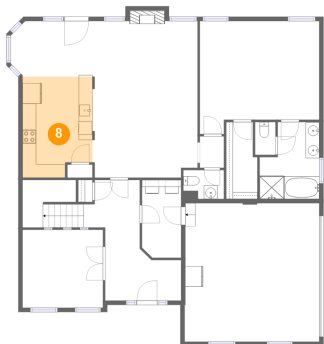
7 Floor 1 - Primary Bath



Max Dimensions: 8'9" x 11'3"
Calculated Area: 85 sq. ft
Included: Yes

Heated: Yes
Finished: Yes
Enclosed: Yes
Contiguous: Yes
Permitted: Yes
Wet space: Yes
Addition: No
Conversion: No

8 Floor 1 - Kitchen



Max Dimensions: 10'3" x 14'10"
Calculated Area: 143 sq. ft
Included: Yes

Heated: Yes
Finished: Yes
Enclosed: Yes
Contiguous: Yes
Permitted: Yes
Wet space: No
Addition: No
Conversion: No

29446 Nicholson Drive Northwest, Harvest, Limestone County,
Alabama, United States, 35749

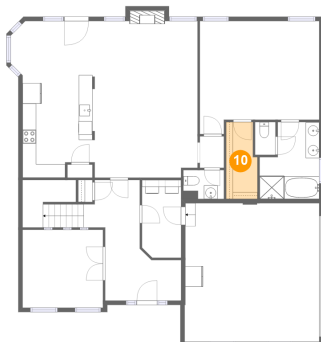
9 Floor 1 - Foyer



Max Dimensions: 11'2" x 10'9"
Calculated Area: 92 sq. ft
Included: Yes

Heated: Yes
Finished: Yes
Enclosed: Yes
Contiguous: Yes
Permitted: Yes
Wet space: No
Addition: No
Conversion: No

10 Floor 1 - W.I.C.



Max Dimensions: 4'7" x 11'3"
Calculated Area: 48 sq. ft
Included: Yes

Heated: Yes
Finished: Yes
Enclosed: Yes
Contiguous: Yes
Permitted: Yes
Wet space: No
Addition: No
Conversion: No

11 Floor 1 - WC



Max Dimensions: 6'0" x 4'3"
Calculated Area: 25 sq. ft
Included: Yes

Heated: Yes
Finished: Yes
Enclosed: Yes
Contiguous: Yes
Permitted: Yes
Wet space: Yes
Addition: No
Conversion: No

29446 Nicholson Drive Northwest, Harvest, Limestone County,
Alabama, United States, 35749

12 Floor 1 - Hall



Max Dimensions: 3'6" x 4'7"
Calculated Area: 16 sq. ft
Included: Yes

Heated: Yes
Finished: Yes
Enclosed: Yes
Contiguous: Yes
Permitted: Yes
Wet space: No
Addition: No
Conversion: No

13 Floor 1 - WC



Max Dimensions: 3'0" x 4'10"
Calculated Area: 14 sq. ft
Included: Yes

Heated: Yes
Finished: Yes
Enclosed: Yes
Contiguous: Yes
Permitted: Yes
Wet space: Yes
Addition: No
Conversion: No

14 Floor 1 - Garage

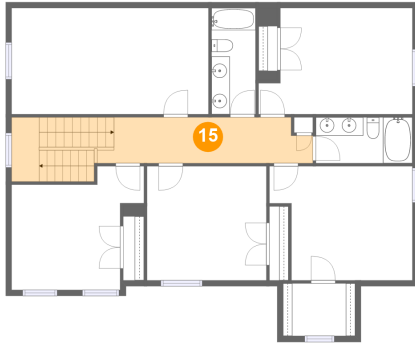


Max Dimensions: 19'9" x 20'4"
Calculated Area: 401 sq. ft
Included: No

Heated: No
Finished: No
Enclosed: Yes
Contiguous: Yes
Permitted: Yes
Wet space: No
Addition: No
Conversion: No

29446 Nicholson Drive Northwest, Harvest, Limestone County,
Alabama, United States, 35749

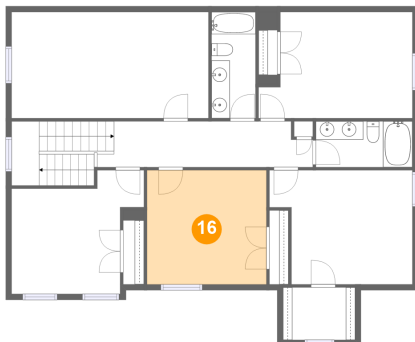
15 Floor 2 - Hall



Max Dimensions: 23'5" x 5'0"
Calculated Area: 176 sq. ft
Included: Yes

Heated: Yes
Finished: Yes
Enclosed: Yes
Contiguous: Yes
Permitted: Yes
Wet space: No
Addition: No
Conversion: No

16 Floor 2 - Bedroom



Max Dimensions: 13'0" x 12'5"
Calculated Area: 161 sq. ft
Included: Yes

Heated: Yes
Finished: Yes
Enclosed: Yes
Contiguous: Yes
Permitted: Yes
Wet space: No
Addition: No
Conversion: No

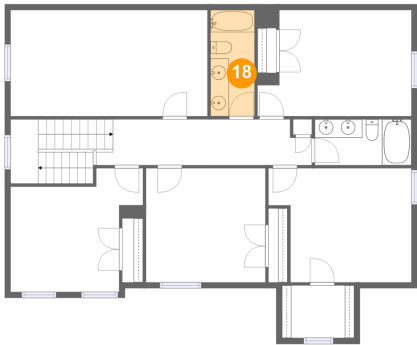
17 Floor 2 - Bonus Room



Max Dimensions: 21'5" x 11'7"
Calculated Area: 247 sq. ft
Included: Yes

Heated: Yes
Finished: Yes
Enclosed: Yes
Contiguous: Yes
Permitted: Yes
Wet space: No
Addition: No
Conversion: No

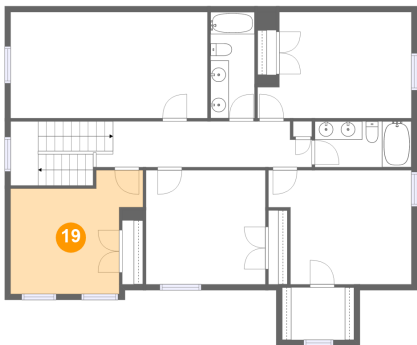
18 Floor 2 - Bath



Max Dimensions: 4'9" x 11'6"
Calculated Area: 55 sq. ft
Included: Yes

Heated: Yes
Finished: Yes
Enclosed: Yes
Contiguous: Yes
Permitted: Yes
Wet space: Yes
Addition: No
Conversion: No

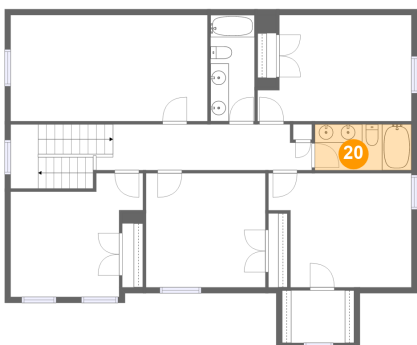
19 Floor 2 - Bedroom



Max Dimensions: 14'5" x 13'5"
Calculated Area: 151 sq. ft
Included: Yes

Heated: Yes
Finished: Yes
Enclosed: Yes
Contiguous: Yes
Permitted: Yes
Wet space: No
Addition: No
Conversion: No

20 Floor 2 - Bath

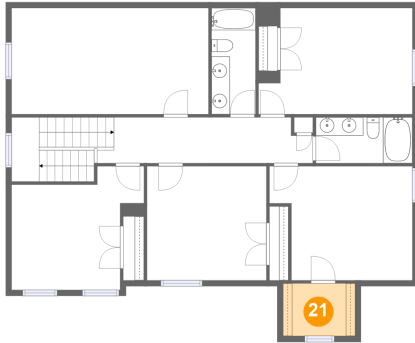


Max Dimensions: 10'6" x 5'0"
Calculated Area: 52 sq. ft
Included: Yes

Heated: Yes
Finished: Yes
Enclosed: Yes
Contiguous: Yes
Permitted: Yes
Wet space: Yes
Addition: No
Conversion: No

29446 Nicholson Drive Northwest, Harvest, Limestone County,
Alabama, United States, 35749

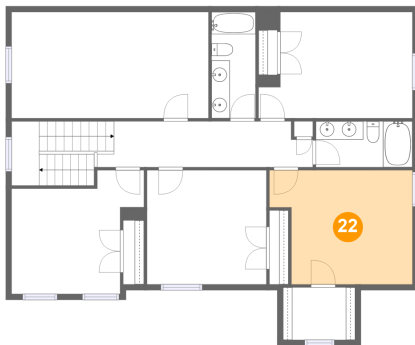
21 Floor 2 - W.I.C.



Max Dimensions: 7'10" x 5'8"
Calculated Area: 45 sq. ft
Included: Yes

Heated: Yes
Finished: Yes
Enclosed: Yes
Contiguous: Yes
Permitted: Yes
Wet space: No
Addition: No
Conversion: No

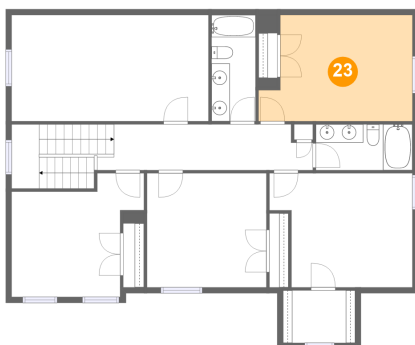
22 Floor 2 - Bedroom



Max Dimensions: 15'7" x 12'5"
Calculated Area: 173 sq. ft
Included: Yes

Heated: Yes
Finished: Yes
Enclosed: Yes
Contiguous: Yes
Permitted: Yes
Wet space: No
Addition: No
Conversion: No

23 Floor 2 - Bedroom



Max Dimensions: 16'9" x 11'7"
Calculated Area: 174 sq. ft
Included: Yes

Heated: Yes
Finished: Yes
Enclosed: Yes
Contiguous: Yes
Permitted: Yes
Wet space: No
Addition: No
Conversion: No