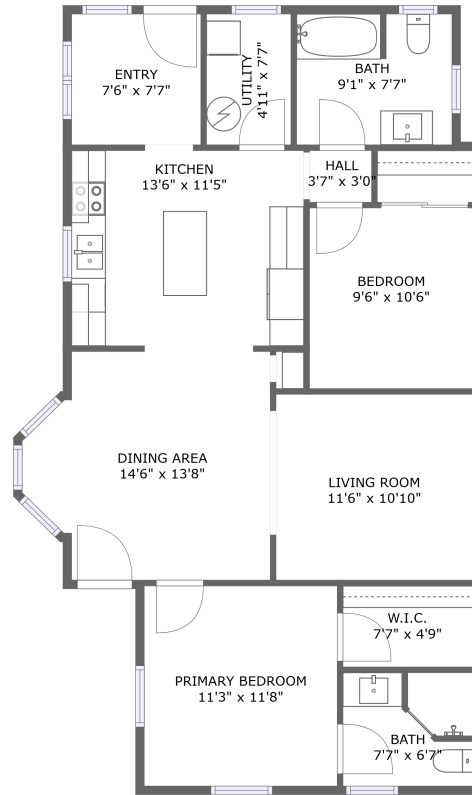



1121 Southeast Sherman Street, Hosford-Abernethy, Portland, Multnomah County, Oregon, United States,



FLOOR 1

Property summary

 **0** Garages

 **2** Bedrooms

 **2** Bathrooms

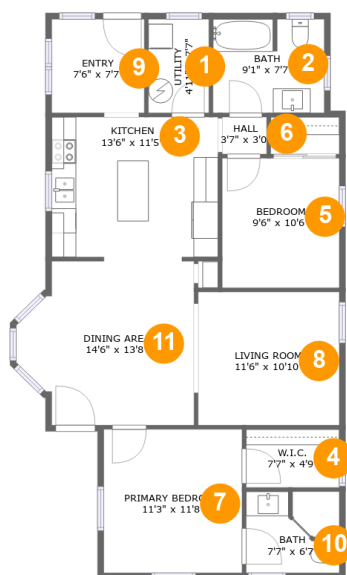
 **0** Half baths

 **1** Floors

 **1,079**
Gross living
area sqft

 **1,079**
Total sqft

1121 Southeast Sherman Street, Hosford-Abernethy, Portland, Multnomah County, Oregon, United States,



Room dimensions

Floor 1

Total sqft: 1079 Living area: 1079

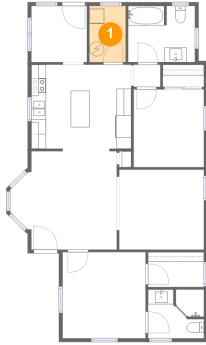
#		Dimensions	sqft	Counted as living area
1	Utility	4'11" x 7'7"	37 sq. ft	Yes
2	Bath	9'1" x 7'7"	68 sq. ft	Yes
3	Kitchen	13'6" x 11'5"	154 sq. ft	Yes
4	Cl	7'7" x 4'9"	36 sq. ft	Yes
5	Bedroom	9'6" x 10'6"	100 sq. ft	Yes
6	Hall	3'7" x 3'0"	11 sq. ft	Yes
7	Bedroom	11'3" x 11'8"	131 sq. ft	Yes
8	Living Room	11'6" x 10'10"	124 sq. ft	Yes
9	Entry	7'6" x 7'7"	57 sq. ft	Yes
10	Bath	7'7" x 6'7"	49 sq. ft	Yes
11	Dining Room	14'6" x 13'8"	173 sq. ft	Yes

Scan captured on Wed, 08 Jan 2025 00:01:26 GMT

Information is calculated by Cubicasa technology deemed highly reliable but not guaranteed.

1121 Southeast Sherman Street, Hosford-Abernethy, Portland, Multnomah County, Oregon, United States,

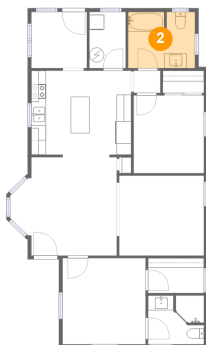
1 Floor 1 - Utility



Dimensions: 4'11" x 7'7"
Area: 37 sq. ft
Counted as living area: Yes

Heated: Yes
Finished: Yes
Enclosed: Yes
Contiguous: Yes
Permitted: Yes
Wet space: No
Addition: No
Conversion: No

2 Floor 1 - Bath

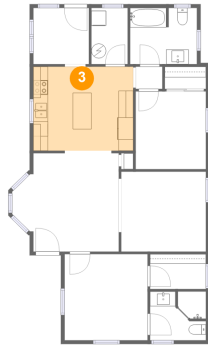


Dimensions: 9'1" x 7'7"
Area: 68 sq. ft
Counted as living area: Yes

Heated: Yes
Finished: Yes
Enclosed: Yes
Contiguous: Yes
Permitted: Yes
Wet space: Yes
Addition: No
Conversion: No

1121 Southeast Sherman Street, Hosford-Abernethy, Portland, Multnomah County, Oregon, United States,

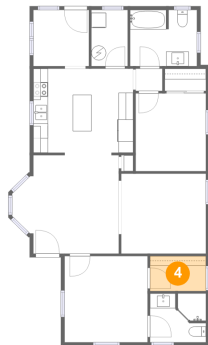
3 Floor 1 - Kitchen



Dimensions: 13'6" x 11'5"
Area: 154 sq. ft
Counted as living area: Yes

Heated: Yes
Finished: Yes
Enclosed: Yes
Contiguous: Yes
Permitted: Yes
Wet space: No
Addition: No
Conversion: No

4 Floor 1 - Cl



Dimensions: 7'7" x 4'9"
Area: 36 sq. ft
Counted as living area: Yes

Heated: Yes
Finished: Yes
Enclosed: Yes
Contiguous: Yes
Permitted: Yes
Wet space: No
Addition: No
Conversion: No

5 Floor 1 - Bedroom

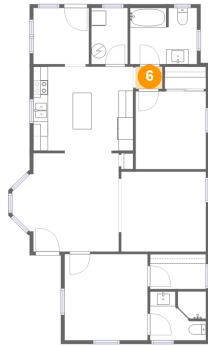


Dimensions: 9'6" x 10'6"
Area: 100 sq. ft
Counted as living area: Yes

Heated: Yes
Finished: Yes
Enclosed: Yes
Contiguous: Yes
Permitted: Yes
Wet space: No
Addition: No
Conversion: No

1121 Southeast Sherman Street, Hosford-Abernethy, Portland, Multnomah County, Oregon, United States,

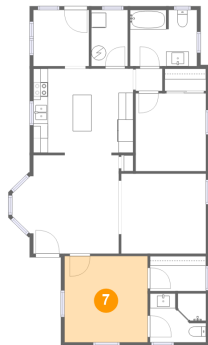
6 Floor 1 - Hall



Dimensions: 3'7" x 3'0"
Area: 11 sq. ft
Counted as living area: Yes

Heated: Yes
Finished: Yes
Enclosed: Yes
Contiguous: Yes
Permitted: Yes
Wet space: No
Addition: No
Conversion: No

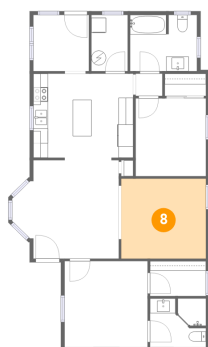
7 Floor 1 - Bedroom



Dimensions: 11'3" x 11'8"
Area: 131 sq. ft
Counted as living area: Yes

Heated: Yes
Finished: Yes
Enclosed: Yes
Contiguous: Yes
Permitted: Yes
Wet space: No
Addition: No
Conversion: No

8 Floor 1 - Living Room

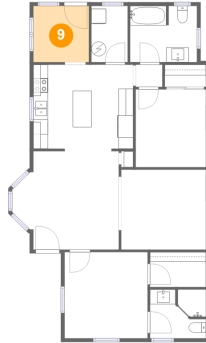


Dimensions: 11'6" x 10'10"
Area: 124 sq. ft
Counted as living area: Yes

Heated: Yes
Finished: Yes
Enclosed: Yes
Contiguous: Yes
Permitted: Yes
Wet space: No
Addition: No
Conversion: No

1121 Southeast Sherman Street, Hosford-Abernethy, Portland, Multnomah County, Oregon, United States,

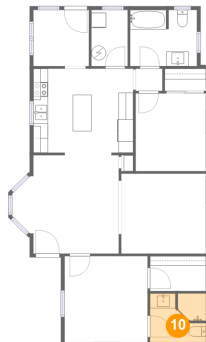
9 Floor 1 - Entry



Dimensions: 7'6" x 7'7"
Area: 57 sq. ft
Counted as living area: Yes

Heated: Yes
Finished: Yes
Enclosed: Yes
Contiguous: Yes
Permitted: Yes
Wet space: No
Addition: No
Conversion: No

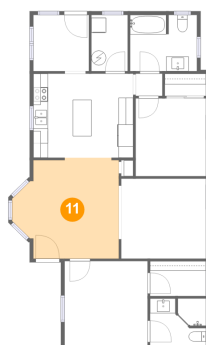
10 Floor 1 - Bath



Dimensions: 7'7" x 6'7"
Area: 49 sq. ft
Counted as living area: Yes

Heated: Yes
Finished: Yes
Enclosed: Yes
Contiguous: Yes
Permitted: Yes
Wet space: Yes
Addition: No
Conversion: No

11 Floor 1 - Dining Room



Dimensions: 14'6" x 13'8"
Area: 173 sq. ft
Counted as living area: Yes

Heated: Yes
Finished: Yes
Enclosed: Yes
Contiguous: Yes
Permitted: Yes
Wet space: No
Addition: No
Conversion: No