


## Home report

**381 Cooks Mill Crescent, Riverside South, Gloucester, Ontario, Canada, K1V 2N2**



## Property summary


 **1** Garages

 **3** Bedrooms

 **3** Bathrooms

 **1** Half baths

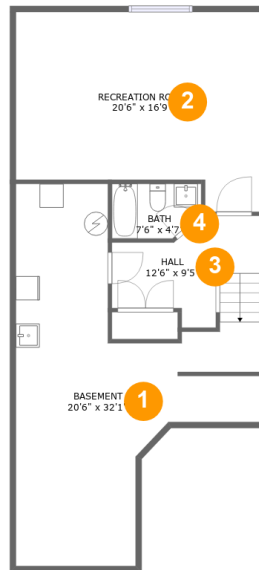
 **3** Floors

 **2,524**  
Gross living  
area sqft

 **3,112**  
Total sqft

Home report

**381 Cooks Mill Crescent, Riverside South, Gloucester, Ontario,  
Canada, K1V 2N2**



## Room dimensions

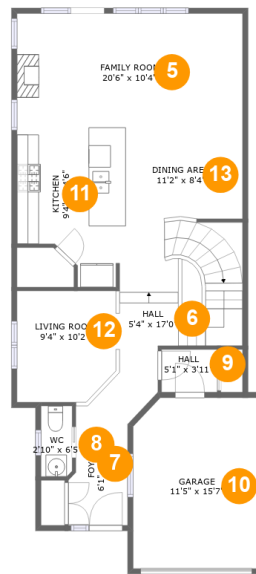
Floor 1

Total sqft: 880 Living area: 479

#		Dimensions	sqft	Counted as living area
1	Basement	20'6" x 32'1"	372 sq. ft	No
2	Recreation Room	20'6" x 16'9"	302 sq. ft	Yes
3	Hall	12'6" x 9'5"	91 sq. ft	Yes
4	Bath	7'6" x 4'7"	32 sq. ft	Yes

Home report

# 381 Cooks Mill Crescent, Riverside South, Gloucester, Ontario, Canada, K1V 2N2



## Room dimensions

Floor 2

Total sqft: 1063 Living area: 876

#		Dimensions	sqft	Counted as living area
5	Family Room	20'6" x 10'4"	213 sq. ft	Yes
6	Hall	5'4" x 17'0"	151 sq. ft	Yes
7	Foyer	6'1" x 10'10"	56 sq. ft	Yes
8	WC	2'10" x 6'5"	18 sq. ft	Yes
9	Hall	5'1" x 3'11"	20 sq. ft	Yes
10	Garage	11'5" x 15'7"	175 sq. ft	No
11	Kitchen	9'4" x 14'6"	115 sq. ft	Yes
12	Living Room	9'4" x 10'2"	92 sq. ft	Yes
13	Dining Area	11'2" x 8'4"	93 sq. ft	Yes

## Home report

**381 Cooks Mill Crescent, Riverside South, Gloucester, Ontario, Canada, K1V 2N2**



## Room dimensions

Floor 3

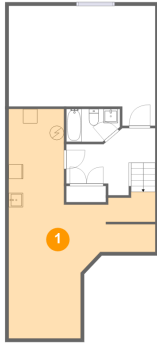
Total sqft: 1169 Living area: 1169

#		Dimensions	sqft	Counted as living area
14	Primary Bedroom	20'6" x 22'9"	339 sq. ft	Yes
15	Laundry	6'10" x 5'9"	39 sq. ft	Yes
16	Bath	9'8" x 5'1"	49 sq. ft	Yes
17	Bedroom	9'8" x 16'2"	141 sq. ft	Yes
18	Bedroom	10'6" x 12'1"	128 sq. ft	Yes
19	Primary Bath	9'8" x 10'8"	96 sq. ft	Yes
20	Hall	4'9" x 26'0"	179 sq. ft	Yes
21	W.I.C.	5'5" x 5'8"	30 sq. ft	Yes

**381 Cooks Mill Crescent, Riverside South, Gloucester, Ontario,  
Canada, K1V 2N2**

**1 Floor 1 - Basement**

---



**Dimensions:** 20'6" x 32'1"  
**Area:** 372 sq. ft  
**Counted as living area:** No

**Heated:** Yes  
**Finished:** No  
**Enclosed:** Yes  
**Contiguous:** Yes  
**Permitted:** Yes  
**Wet space:** No  
**Addition:** No  
**Conversion:** No

**2 Floor 1 - Recreation Room**

---



**Dimensions:** 20'6" x 16'9"  
**Area:** 302 sq. ft  
**Counted as living area:** Yes

**Heated:** Yes  
**Finished:** Yes  
**Enclosed:** Yes  
**Contiguous:** Yes  
**Permitted:** Yes  
**Wet space:** No  
**Addition:** No  
**Conversion:** No

381 Cooks Mill Crescent, Riverside South, Gloucester, Ontario, Canada, K1V 2N2

**3** Floor 1 - Hall



Dimensions: 12'6" x 9'5"  
Area: 91 sq. ft  
Counted as living area: Yes

Heated: Yes  
Finished: Yes  
Enclosed: Yes  
Contiguous: Yes  
Permitted: Yes  
Wet space: No  
Addition: No  
Conversion: No

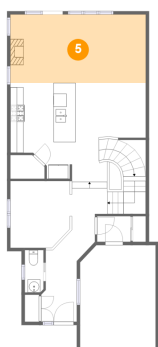
**4** Floor 1 - Bath



Dimensions: 7'6" x 4'7"  
Area: 32 sq. ft  
Counted as living area: Yes

Heated: Yes  
Finished: Yes  
Enclosed: Yes  
Contiguous: Yes  
Permitted: Yes  
Wet space: Yes  
Addition: No  
Conversion: No

**5** Floor 2 - Family Room



Dimensions: 20'6" x 10'4"  
Area: 213 sq. ft  
Counted as living area: Yes

Heated: Yes  
Finished: Yes  
Enclosed: Yes  
Contiguous: Yes  
Permitted: Yes  
Wet space: No  
Addition: No  
Conversion: No

381 Cooks Mill Crescent, Riverside South, Gloucester, Ontario, Canada, K1V 2N2

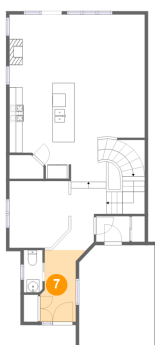
**6** Floor 2 - Hall



Dimensions: 5'4" x 17'0"  
Area: 151 sq. ft  
Counted as living area: Yes

Heated: Yes  
Finished: Yes  
Enclosed: Yes  
Contiguous: Yes  
Permitted: Yes  
Wet space: No  
Addition: No  
Conversion: No

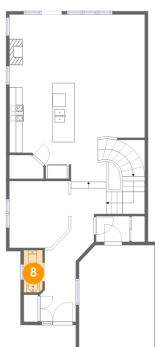
**7** Floor 2 - Foyer



Dimensions: 6'1" x 10'10"  
Area: 56 sq. ft  
Counted as living area: Yes

Heated: Yes  
Finished: Yes  
Enclosed: Yes  
Contiguous: Yes  
Permitted: Yes  
Wet space: No  
Addition: No  
Conversion: No

**8** Floor 2 - WC



Dimensions: 2'10" x 6'5"  
Area: 18 sq. ft  
Counted as living area: Yes

Heated: Yes  
Finished: Yes  
Enclosed: Yes  
Contiguous: Yes  
Permitted: Yes  
Wet space: Yes  
Addition: No  
Conversion: No

381 Cooks Mill Crescent, Riverside South, Gloucester, Ontario, Canada, K1V 2N2

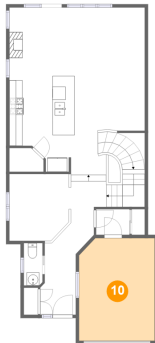
9 Floor 2 - Hall



Dimensions: 5'1" x 3'11"  
Area: 20 sq. ft  
Counted as living area: Yes

Heated: Yes  
Finished: Yes  
Enclosed: Yes  
Contiguous: Yes  
Permitted: Yes  
Wet space: No  
Addition: No  
Conversion: No

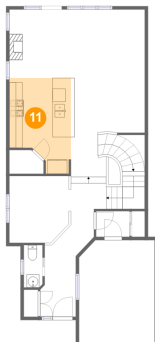
10 Floor 2 - Garage



Dimensions: 11'5" x 15'7"  
Area: 175 sq. ft  
Counted as living area: No

Heated: No  
Finished: No  
Enclosed: Yes  
Contiguous: Yes  
Permitted: Yes  
Wet space: No  
Addition: No  
Conversion: No

11 Floor 2 - Kitchen



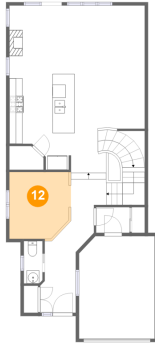
Dimensions: 9'4" x 14'6"  
Area: 115 sq. ft  
Counted as living area: Yes

Heated: Yes  
Finished: Yes  
Enclosed: Yes  
Contiguous: Yes  
Permitted: Yes  
Wet space: No  
Addition: No  
Conversion: No



381 Cooks Mill Crescent, Riverside South, Gloucester, Ontario, Canada, K1V 2N2

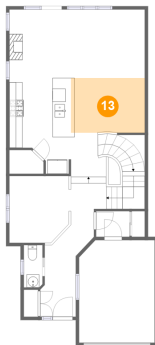
**12** Floor 2 - Living Room



Dimensions: 9'4" x 10'2"  
Area: 92 sq. ft  
Counted as living area: Yes

Heated: Yes  
Finished: Yes  
Enclosed: Yes  
Contiguous: Yes  
Permitted: Yes  
Wet space: No  
Addition: No  
Conversion: No

**13** Floor 2 - Dining Area



Dimensions: 11'2" x 8'4"  
Area: 93 sq. ft  
Counted as living area: Yes

Heated: Yes  
Finished: Yes  
Enclosed: Yes  
Contiguous: Yes  
Permitted: Yes  
Wet space: No  
Addition: No  
Conversion: No

**14** Floor 3 - Primary Bedroom



Dimensions: 20'6" x 22'9"  
Area: 339 sq. ft  
Counted as living area: Yes

Heated: Yes  
Finished: Yes  
Enclosed: Yes  
Contiguous: Yes  
Permitted: Yes  
Wet space: No  
Addition: No  
Conversion: No

381 Cooks Mill Crescent, Riverside South, Gloucester, Ontario, Canada, K1V 2N2

**15** Floor 3 - Laundry

---



Dimensions: 6'10" x 5'9"  
Area: 39 sq. ft  
Counted as living area: Yes

Heated: Yes  
Finished: Yes  
Enclosed: Yes  
Contiguous: Yes  
Permitted: Yes  
Wet space: No  
Addition: No  
Conversion: No

**16** Floor 3 - Bath

---



Dimensions: 9'8" x 5'1"  
Area: 49 sq. ft  
Counted as living area: Yes

Heated: Yes  
Finished: Yes  
Enclosed: Yes  
Contiguous: Yes  
Permitted: Yes  
Wet space: Yes  
Addition: No  
Conversion: No

**17** Floor 3 - Bedroom

---



Dimensions: 9'8" x 16'2"  
Area: 141 sq. ft  
Counted as living area: Yes

Heated: Yes  
Finished: Yes  
Enclosed: Yes  
Contiguous: Yes  
Permitted: Yes  
Wet space: No  
Addition: No  
Conversion: No

381 Cooks Mill Crescent, Riverside South, Gloucester, Ontario, Canada, K1V 2N2

**18** Floor 3 - Bedroom



Dimensions: 10'6" x 12'1"  
Area: 128 sq. ft  
Counted as living area: Yes

Heated: Yes  
Finished: Yes  
Enclosed: Yes  
Contiguous: Yes  
Permitted: Yes  
Wet space: No  
Addition: No  
Conversion: No

**19** Floor 3 - Primary Bath



Dimensions: 9'8" x 10'8"  
Area: 96 sq. ft  
Counted as living area: Yes

Heated: Yes  
Finished: Yes  
Enclosed: Yes  
Contiguous: Yes  
Permitted: Yes  
Wet space: Yes  
Addition: No  
Conversion: No

**20** Floor 3 - Hall



Dimensions: 4'9" x 26'0"  
Area: 179 sq. ft  
Counted as living area: Yes

Heated: Yes  
Finished: Yes  
Enclosed: Yes  
Contiguous: Yes  
Permitted: Yes  
Wet space: No  
Addition: No  
Conversion: No

Home report

**381 Cooks Mill Crescent, Riverside South, Gloucester, Ontario,  
Canada, K1V 2N2**

**21 Floor 3 - W.I.C.**

---



**Dimensions: 5'5" x 5'8"**  
**Area: 30 sq. ft**  
**Counted as living area: Yes**

**Heated: Yes**  
**Finished: Yes**  
**Enclosed: Yes**  
**Contiguous: Yes**  
**Permitted: Yes**  
**Wet space: No**  
**Addition: No**  
**Conversion: No**