



Home report


14255 Southwest Parmele Road, Gaston, Washington County,
Oregon, United States, 97119





Property summary


 **1** Garages


 **5** Bedrooms

 **3** Bathrooms

 **0** Half baths

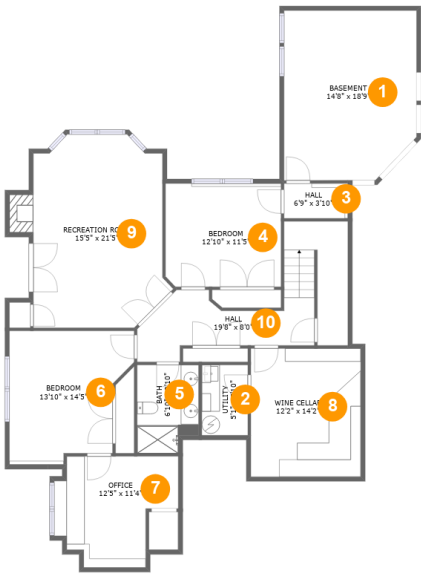
 **2** Floors

 **3,863** Gross living area sqft

 **5,143** Total sqft

Home report

14255 Southwest Parmele Road, Gaston, Washington County,
Oregon, United States, 97119



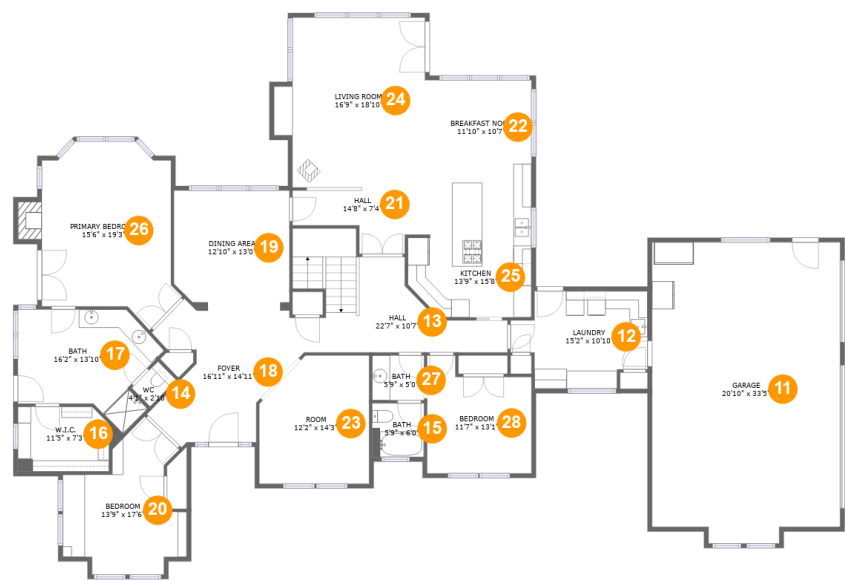
Room dimensions

Floor 1Total sqft: 1749 Living area: 1205

#		Max Dimensions	sqft	Included
1	Basement	14'8" x 18'9"	266 sq. ft	No
2	Utility	5'1" x 7'10"	40 sq. ft	No
3	Hall	6'9" x 3'10"	27 sq. ft	Yes
4	Bedroom	12'10" x 11'5"	146 sq. ft	Yes
5	Bath	6'10" x 9'10"	63 sq. ft	Yes
6	Bedroom	13'10" x 14'5"	174 sq. ft	Yes
7	Office	12'5" x 11'4"	134 sq. ft	Yes
8	Wine Cellar	12'2" x 14'2"	173 sq. ft	No
9	Recreation Room	15'5" x 21'5"	303 sq. ft	Yes
10	Hall	19'8" x 8'0"	175 sq. ft	Yes

Home report

14255 Southwest Parmele Road, Gaston, Washington County,
Oregon, United States, 97119



Room dimensions

Floor 2 Total sqft: 3394 Living area: 2658

#		Max Dimensions	sqft	Included
11	Garage	20'10" x 33'5"	673 sq. ft	No
12	Laundry	15'2" x 10'10"	138 sq. ft	Yes
13	Hall	22'7" x 10'7"	185 sq. ft	Yes
14	WC	4'1" x 2'10"	12 sq. ft	Yes
15	Bath	5'9" x 6'0"	34 sq. ft	Yes
16	W.I.C.	11'5" x 7'3"	73 sq. ft	Yes
17	Bath	16'2" x 13'10"	157 sq. ft	Yes
18	Foyer	16'11" x 14'11"	185 sq. ft	Yes
19	Dining Area	12'10" x 13'0"	163 sq. ft	Yes
20	Bedroom	13'9" x 17'6"	162 sq. ft	Yes
21	Hall	14'8" x 7'4"	80 sq. ft	Yes

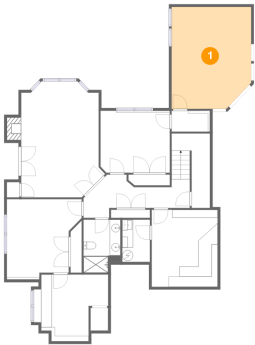
Home report

**14255 Southwest Parmele Road, Gaston, Washington County,
Oregon, United States, 97119**

#		Max Dimensions	sqft	Included
22	Breakfast Nook	11'10" x 10'7"	125 sq. ft	Yes
23	Room	12'2" x 14'3"	160 sq. ft	Yes
24	Living Room	16'9" x 18'10"	288 sq. ft	Yes
25	Kitchen	13'9" x 15'8"	196 sq. ft	Yes
26	Primary Bedroom	15'6" x 19'3"	270 sq. ft	Yes
27	Bath	5'9" x 5'0"	29 sq. ft	Yes
28	Bedroom	11'7" x 13'1"	131 sq. ft	Yes

14255 Southwest Parmele Road, Gaston, Washington County,
Oregon, United States, 97119

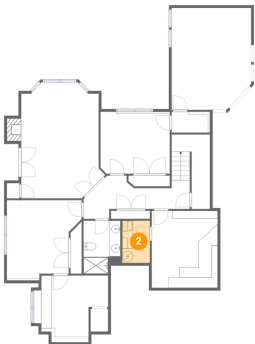
1 Floor 1 - Basement



Max Dimensions: 14'8" x 18'9"
Calculated Area: 266 sq. ft
Included: No

Heated: Yes
Finished: No
Enclosed: Yes
Contiguous: Yes
Permitted: Yes
Wet space: No
Addition: No
Conversion: No

2 Floor 1 - Utility

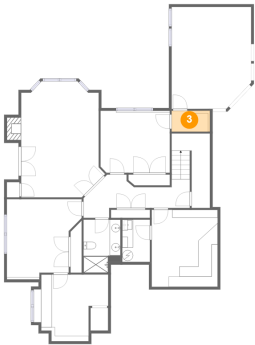


Max Dimensions: 5'1" x 7'10"
Calculated Area: 40 sq. ft
Included: No

Heated: Yes
Finished: Yes
Enclosed: Yes
Contiguous: No
Permitted: Yes
Wet space: No
Addition: No
Conversion: No

14255 Southwest Parmele Road, Gaston, Washington County,
Oregon, United States, 97119

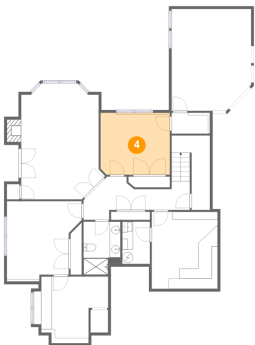
3 Floor 1 - Hall



Max Dimensions: 6'9" x 3'10"
Calculated Area: 27 sq. ft
Included: Yes

Heated: Yes
Finished: Yes
Enclosed: Yes
Contiguous: Yes
Permitted: Yes
Wet space: No
Addition: No
Conversion: No

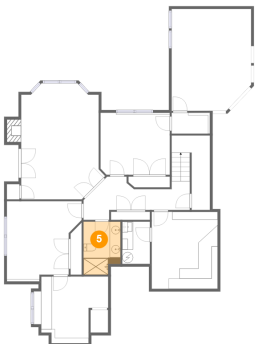
4 Floor 1 - Bedroom



Max Dimensions: 12'10" x 11'5"
Calculated Area: 146 sq. ft
Included: Yes

Heated: Yes
Finished: Yes
Enclosed: Yes
Contiguous: Yes
Permitted: Yes
Wet space: No
Addition: No
Conversion: No

5 Floor 1 - Bath

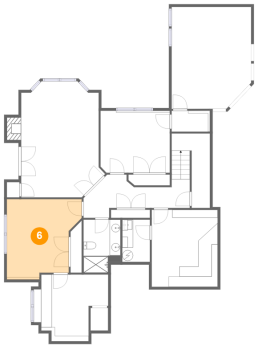


Max Dimensions: 6'10" x 9'10"
Calculated Area: 63 sq. ft
Included: Yes

Heated: Yes
Finished: Yes
Enclosed: Yes
Contiguous: Yes
Permitted: Yes
Wet space: Yes
Addition: No
Conversion: No

14255 Southwest Parmele Road, Gaston, Washington County,
Oregon, United States, 97119

6 Floor 1 - Bedroom



Max Dimensions: 13'10" x 14'5"
Calculated Area: 174 sq. ft
Included: Yes

Heated: Yes
Finished: Yes
Enclosed: Yes
Contiguous: Yes
Permitted: Yes
Wet space: No
Addition: No
Conversion: No

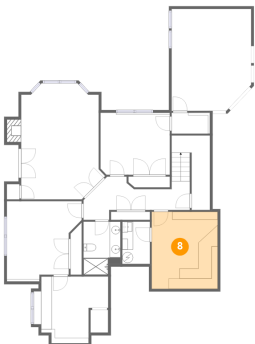
7 Floor 1 - Office



Max Dimensions: 12'5" x 11'4"
Calculated Area: 134 sq. ft
Included: Yes

Heated: Yes
Finished: Yes
Enclosed: Yes
Contiguous: Yes
Permitted: Yes
Wet space: No
Addition: No
Conversion: No

8 Floor 1 - Wine Cellar

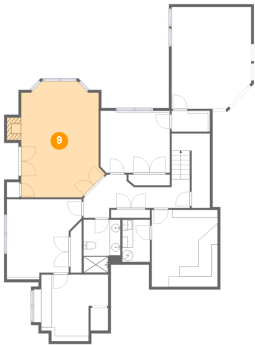


Max Dimensions: 12'2" x 14'2"
Calculated Area: 173 sq. ft
Included: No

Heated: No
Finished: Yes
Enclosed: Yes
Contiguous: Yes
Permitted: Yes
Wet space: No
Addition: No
Conversion: No

14255 Southwest Parmele Road, Gaston, Washington County,
Oregon, United States, 97119

9 Floor 1 - Recreation Room



Max Dimensions: 15'5" x 21'5"
Calculated Area: 303 sq. ft
Included: Yes

Heated: Yes
Finished: Yes
Enclosed: Yes
Contiguous: Yes
Permitted: Yes
Wet space: No
Addition: No
Conversion: No

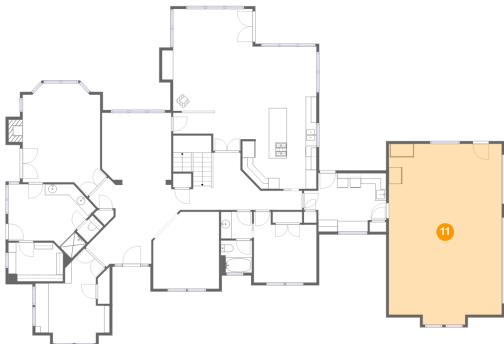
10 Floor 1 - Hall



Max Dimensions: 19'8" x 8'0"
Calculated Area: 175 sq. ft
Included: Yes

Heated: Yes
Finished: Yes
Enclosed: Yes
Contiguous: Yes
Permitted: Yes
Wet space: No
Addition: No
Conversion: No

11 Floor 2 - Garage

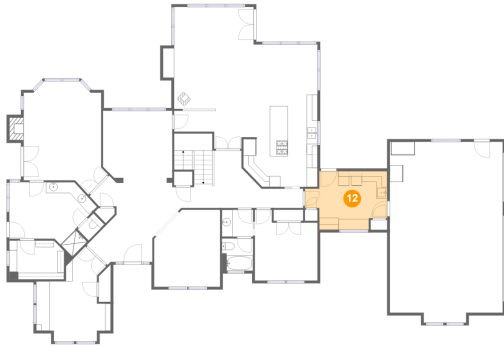


Max Dimensions: 20'10" x 33'5"
Calculated Area: 673 sq. ft
Included: No

Heated: No
Finished: No
Enclosed: Yes
Contiguous: Yes
Permitted: Yes
Wet space: No
Addition: No
Conversion: No

14255 Southwest Parmele Road, Gaston, Washington County,
Oregon, United States, 97119

12 Floor 2 - Laundry



Max Dimensions: 15'2" x 10'10"
Calculated Area: 138 sq. ft
Included: Yes

Heated: Yes
Finished: Yes
Enclosed: Yes
Contiguous: Yes
Permitted: Yes
Wet space: No
Addition: No
Conversion: No

13 Floor 2 - Hall



Max Dimensions: 22'7" x 10'7"
Calculated Area: 185 sq. ft
Included: Yes

Heated: Yes
Finished: Yes
Enclosed: Yes
Contiguous: Yes
Permitted: Yes
Wet space: No
Addition: No
Conversion: No

14 Floor 2 - WC



Max Dimensions: 4'1" x 2'10"
Calculated Area: 12 sq. ft
Included: Yes

Heated: Yes
Finished: Yes
Enclosed: Yes
Contiguous: Yes
Permitted: Yes
Wet space: No
Addition: No
Conversion: No

14255 Southwest Parmele Road, Gaston, Washington County,
Oregon, United States, 97119

15 Floor 2 - Bath



Max Dimensions: 5'9" x 6'0"
Calculated Area: 34 sq. ft
Included: Yes

Heated: Yes
Finished: Yes
Enclosed: Yes
Contiguous: Yes
Permitted: Yes
Wet space: Yes
Addition: No
Conversion: No

16 Floor 2 - W.I.C.



Max Dimensions: 11'5" x 7'3"
Calculated Area: 73 sq. ft
Included: Yes

Heated: Yes
Finished: Yes
Enclosed: Yes
Contiguous: Yes
Permitted: Yes
Wet space: No
Addition: No
Conversion: No

17 Floor 2 - Bath



Max Dimensions: 16'2" x 13'10"
Calculated Area: 157 sq. ft
Included: Yes

Heated: Yes
Finished: Yes
Enclosed: Yes
Contiguous: Yes
Permitted: Yes
Wet space: Yes
Addition: No
Conversion: No

14255 Southwest Parmele Road, Gaston, Washington County,
Oregon, United States, 97119

18 Floor 2 - Foyer



Max Dimensions: 16'11" x 14'11"
Calculated Area: 185 sq. ft
Included: Yes

Heated: Yes
Finished: Yes
Enclosed: Yes
Contiguous: Yes
Permitted: Yes
Wet space: No
Addition: No
Conversion: No

19 Floor 2 - Dining Area



Max Dimensions: 12'10" x 13'0"
Calculated Area: 163 sq. ft
Included: Yes

Heated: Yes
Finished: Yes
Enclosed: Yes
Contiguous: Yes
Permitted: Yes
Wet space: No
Addition: No
Conversion: No

20 Floor 2 - Bedroom

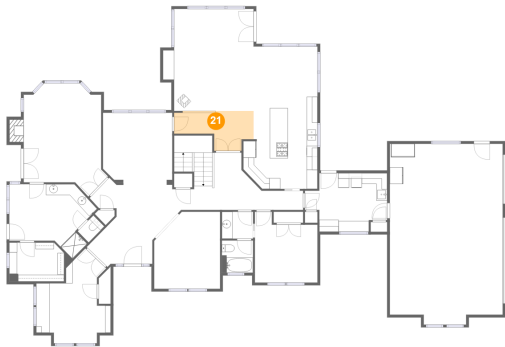


Max Dimensions: 13'9" x 17'6"
Calculated Area: 162 sq. ft
Included: Yes

Heated: Yes
Finished: Yes
Enclosed: Yes
Contiguous: Yes
Permitted: Yes
Wet space: No
Addition: No
Conversion: No

14255 Southwest Parmele Road, Gaston, Washington County,
Oregon, United States, 97119

21 Floor 2 - Hall



Max Dimensions: 14'8" x 7'4"
Calculated Area: 80 sq. ft
Included: Yes

Heated: Yes
Finished: Yes
Enclosed: Yes
Contiguous: Yes
Permitted: Yes
Wet space: No
Addition: No
Conversion: No

22 Floor 2 - Breakfast Nook



Max Dimensions: 11'10" x 10'7"
Calculated Area: 125 sq. ft
Included: Yes

Heated: Yes
Finished: Yes
Enclosed: Yes
Contiguous: Yes
Permitted: Yes
Wet space: No
Addition: No
Conversion: No

23 Floor 2 - Room

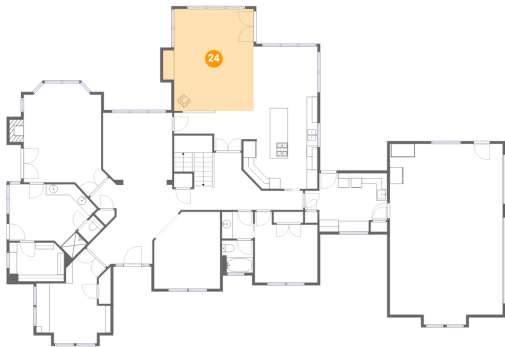


Max Dimensions: 12'2" x 14'3"
Calculated Area: 160 sq. ft
Included: Yes

Heated: Yes
Finished: Yes
Enclosed: Yes
Contiguous: Yes
Permitted: Yes
Wet space: No
Addition: No
Conversion: No

14255 Southwest Parmele Road, Gaston, Washington County,
Oregon, United States, 97119

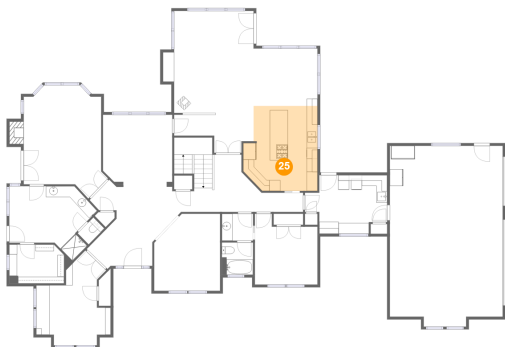
24 Floor 2 - Living Room



Max Dimensions: 16'9" x 18'10"
Calculated Area: 288 sq. ft
Included: Yes

Heated: Yes
Finished: Yes
Enclosed: Yes
Contiguous: Yes
Permitted: Yes
Wet space: No
Addition: No
Conversion: No

25 Floor 2 - Kitchen



Max Dimensions: 13'9" x 15'8"
Calculated Area: 196 sq. ft
Included: Yes

Heated: Yes
Finished: Yes
Enclosed: Yes
Contiguous: Yes
Permitted: Yes
Wet space: No
Addition: No
Conversion: No

26 Floor 2 - Primary Bedroom



Max Dimensions: 15'6" x 19'3"
Calculated Area: 270 sq. ft
Included: Yes

Heated: Yes
Finished: Yes
Enclosed: Yes
Contiguous: Yes
Permitted: Yes
Wet space: No
Addition: No
Conversion: No

14255 Southwest Parmele Road, Gaston, Washington County,
Oregon, United States, 97119

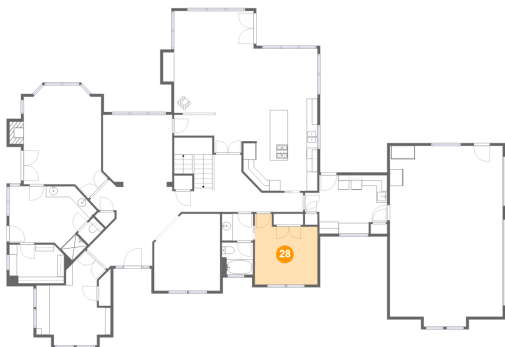
27 Floor 2 - Bath



Max Dimensions: 5'9" x 5'0"
Calculated Area: 29 sq. ft
Included: Yes

Heated: Yes
Finished: Yes
Enclosed: Yes
Contiguous: Yes
Permitted: Yes
Wet space: Yes
Addition: No
Conversion: No

28 Floor 2 - Bedroom



Max Dimensions: 11'7" x 13'1"
Calculated Area: 131 sq. ft
Included: Yes

Heated: Yes
Finished: Yes
Enclosed: Yes
Contiguous: Yes
Permitted: Yes
Wet space: No
Addition: No
Conversion: No