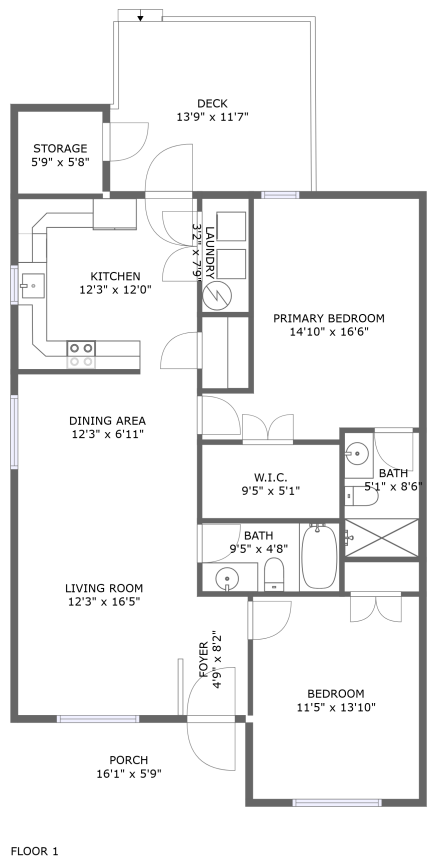



Home report


402 Chestnut Street, Dropmore, Salem, Salem city, Virginia,  
United States, 24153




Property summary




**0**  
Garages



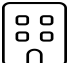
**2**  
Bedrooms




**2**  
Bathrooms




**0**  
Half baths



**1**  
Floors



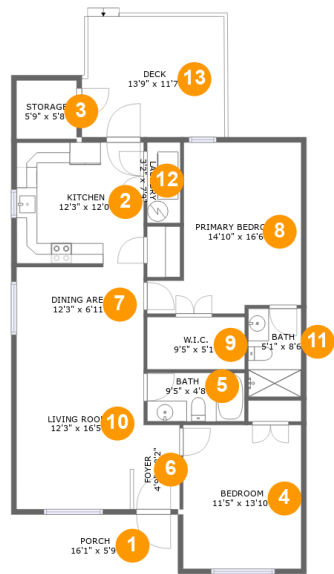
**1,094**  
Gross living  
area sqft



**1,384**  
Total sqft

Home report

402 Chestnut Street, Dropmore, Salem, Salem city, Virginia,  
United States, 24153



Room dimensions

Floor 1 Total sqft: 1384    Living area: 1094

#		Dimensions	sqft	Counted as living area
1	Porch	16'1" x 5'9"	92 sq. ft	No
2	Kitchen	12'3" x 12'0"	145 sq. ft	Yes
3	Storage	5'9" x 5'8"	33 sq. ft	No
4	Bedroom	11'5" x 13'10"	158 sq. ft	Yes
5	Bath	9'5" x 4'8"	44 sq. ft	Yes
6	Foyer	4'9" x 8'2"	36 sq. ft	Yes
7	Dining Area	12'3" x 6'11"	85 sq. ft	Yes
8	Primary Bedroom	14'10" x 16'6"	194 sq. ft	Yes
9	W.I.C.	9'5" x 5'1"	47 sq. ft	Yes
10	Living Room	12'3" x 16'5"	193 sq. ft	Yes
11	Bath	5'1" x 8'6"	44 sq. ft	Yes

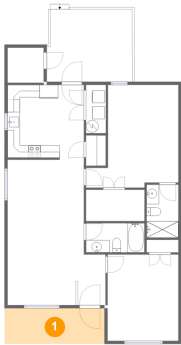
Home report

402 Chestnut Street, Dropmore, Salem, Salem city, Virginia,  
United States, 24153

#		Dimensions	sqft	Counted as living area
12	Laundry	3'2" x 7'9"	25 sq. ft	Yes
13	Deck	13'9" x 11'7"	156 sq. ft	No

402 Chestnut Street, Dropmore, Salem, Salem city, Virginia,  
United States, 24153

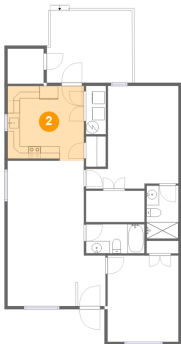
1 Floor 1 - Porch



Dimensions: 16'1" x 5'9"  
Area: 92 sq. ft  
Counted as living area: No

Heated: No  
Finished: Yes  
Enclosed: No  
Contiguous: Yes  
Permitted: Yes  
Wet space: No  
Addition: No  
Conversion: No

2 Floor 1 - Kitchen

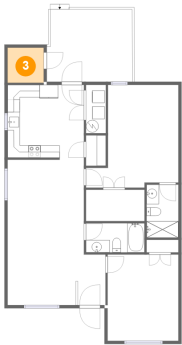


Dimensions: 12'3" x 12'0"  
Area: 145 sq. ft  
Counted as living area: Yes

Heated: Yes  
Finished: Yes  
Enclosed: Yes  
Contiguous: Yes  
Permitted: Yes  
Wet space: No  
Addition: No  
Conversion: No

402 Chestnut Street, Dropmore, Salem, Salem city, Virginia,  
United States, 24153

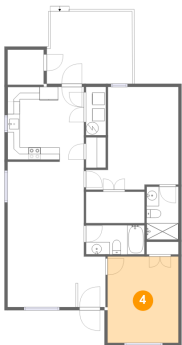
3 Floor 1 - Storage



Dimensions: 5'9" x 5'8"  
Area: 33 sq. ft  
Counted as living area: No

Heated: No  
Finished: No  
Enclosed: No  
Contiguous: No  
Permitted: Yes  
Wet space: No  
Addition: No  
Conversion: No

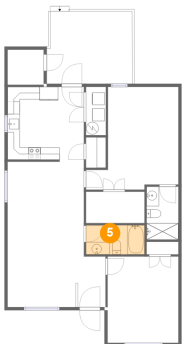
4 Floor 1 - Bedroom



Dimensions: 11'5" x 13'10"  
Area: 158 sq. ft  
Counted as living area: Yes

Heated: Yes  
Finished: Yes  
Enclosed: Yes  
Contiguous: Yes  
Permitted: Yes  
Wet space: No  
Addition: No  
Conversion: No

5 Floor 1 - Bath



Dimensions: 9'5" x 4'8"  
Area: 44 sq. ft  
Counted as living area: Yes

Heated: Yes  
Finished: Yes  
Enclosed: Yes  
Contiguous: Yes  
Permitted: Yes  
Wet space: Yes  
Addition: No  
Conversion: No

402 Chestnut Street, Dropmore, Salem, Salem city, Virginia,  
United States, 24153

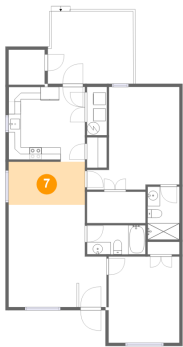
6 Floor 1 - Foyer



Dimensions: 4'9" x 8'2"  
Area: 36 sq. ft  
Counted as living area: Yes

Heated: Yes  
Finished: Yes  
Enclosed: Yes  
Contiguous: Yes  
Permitted: Yes  
Wet space: No  
Addition: No  
Conversion: No

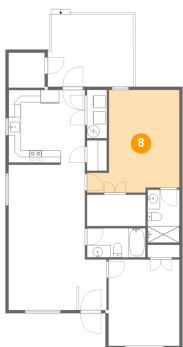
7 Floor 1 - Dining Area



Dimensions: 12'3" x 6'11"  
Area: 85 sq. ft  
Counted as living area: Yes

Heated: Yes  
Finished: Yes  
Enclosed: Yes  
Contiguous: Yes  
Permitted: Yes  
Wet space: No  
Addition: No  
Conversion: No

8 Floor 1 - Primary Bedroom



Dimensions: 14'10" x 16'6"  
Area: 194 sq. ft  
Counted as living area: Yes

Heated: Yes  
Finished: Yes  
Enclosed: Yes  
Contiguous: Yes  
Permitted: Yes  
Wet space: No  
Addition: No  
Conversion: No

## Home report

402 Chestnut Street, Dropmore, Salem, Salem city, Virginia,  
United States, 24153

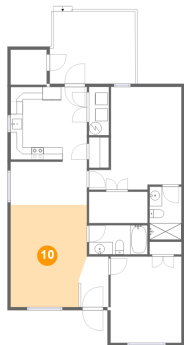
### 9 Floor 1 - W.I.C.



Dimensions: 9'5" x 5'1"  
Area: 47 sq. ft  
Counted as living area: Yes

Heated: Yes  
Finished: Yes  
Enclosed: Yes  
Contiguous: Yes  
Permitted: Yes  
Wet space: No  
Addition: No  
Conversion: No

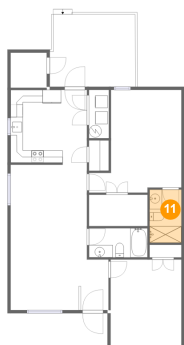
### 10 Floor 1 - Living Room



Dimensions: 12'3" x 16'5"  
Area: 193 sq. ft  
Counted as living area: Yes

Heated: Yes  
Finished: Yes  
Enclosed: Yes  
Contiguous: Yes  
Permitted: Yes  
Wet space: No  
Addition: No  
Conversion: No

### 11 Floor 1 - Bath

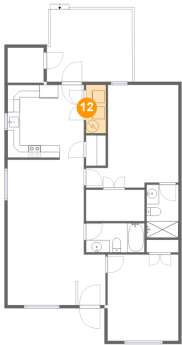


Dimensions: 5'1" x 8'6"  
Area: 44 sq. ft  
Counted as living area: Yes

Heated: Yes  
Finished: Yes  
Enclosed: Yes  
Contiguous: Yes  
Permitted: Yes  
Wet space: Yes  
Addition: No  
Conversion: No

402 Chestnut Street, Dropmore, Salem, Salem city, Virginia,  
United States, 24153

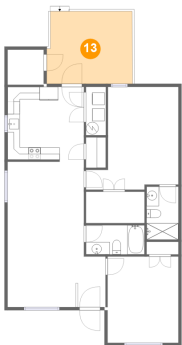
12 Floor 1 - Laundry



Dimensions: 3'2" x 7'9"  
Area: 25 sq. ft  
Counted as living area: Yes

Heated: Yes  
Finished: Yes  
Enclosed: Yes  
Contiguous: Yes  
Permitted: Yes  
Wet space: No  
Addition: No  
Conversion: No

13 Floor 1 - Deck



Dimensions: 13'9" x 11'7"  
Area: 156 sq. ft  
Counted as living area: No

Heated: No  
Finished: Yes  
Enclosed: No  
Contiguous: Yes  
Permitted: Yes  
Wet space: No  
Addition: No  
Conversion: No