

1106-6200 River Rd

Richmond BC V7C 0B1

Total Area 930 SQ.FT.

Ceiling Height: 8'4"

2



BEDROOMS

2

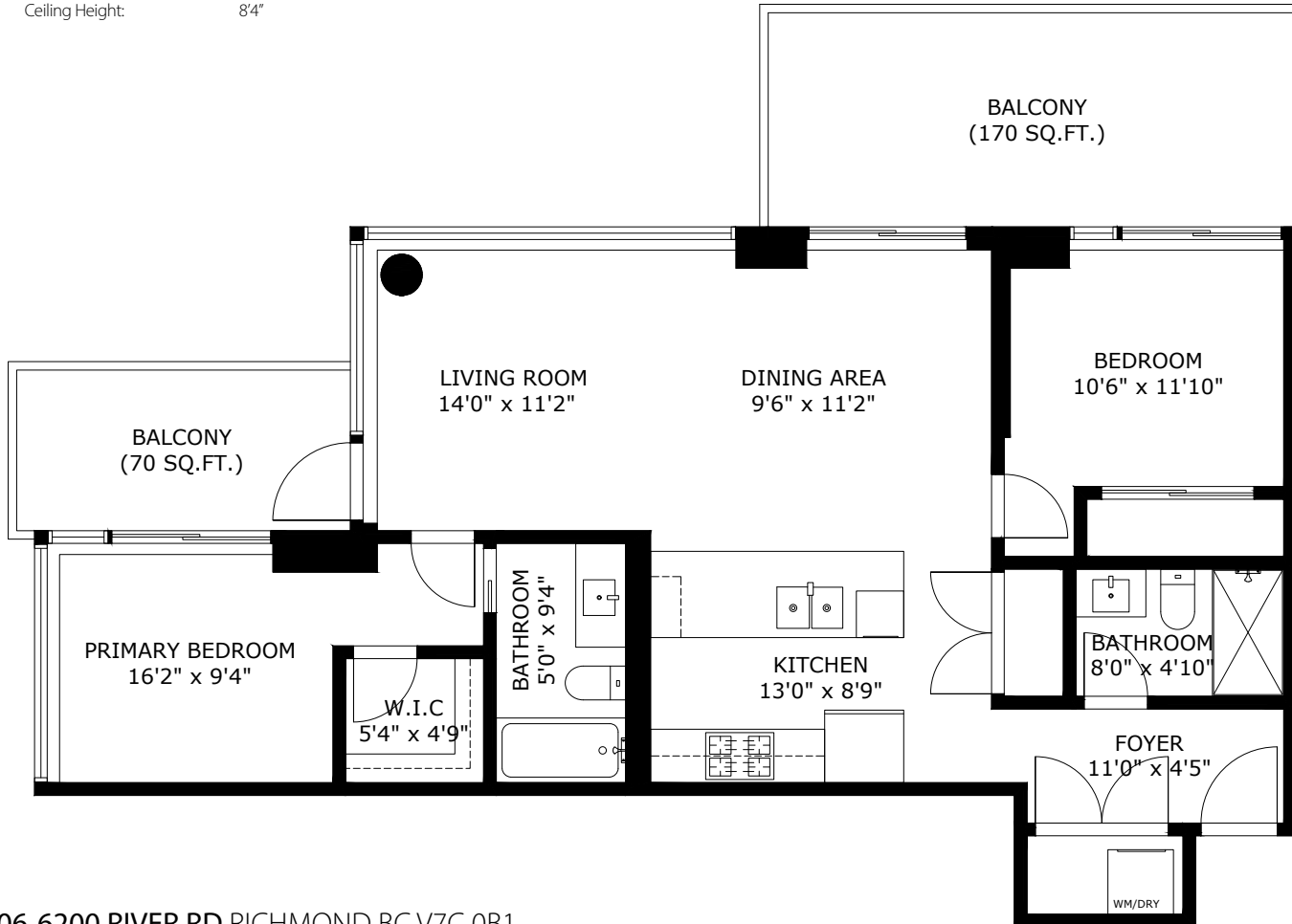


BATHROOMS

930



TOTAL SQ.FT.



1106-6200 RIVER RD RICHMOND BC V7C 0B1

Measurements are approximate and may not be to scale. Gross measurements provided by agent.
The floor plan illustration is not suitable for construction/architectural purposes.
This communication is not intended to cause or induce breach of an existing agency agreement


3D IMMERSIVE
Tours Photos Floor Plans

Professionally measured by 3D Immersive Marketing Ltd.

Lead Floor Planner: *Sara Alexander*
Quality Assurance: *Dianne Graham*