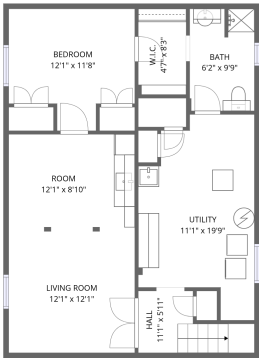
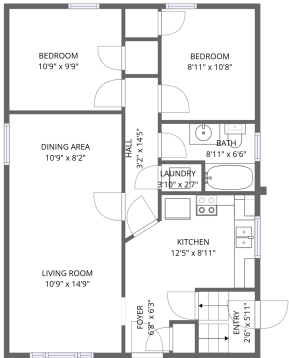


Home data report

420 McKellar St,Peterborough,ON,CA



Basement 1



1st floor

Total Area: 1369 sq. ft
Below Ground: 595 sq. ft, 1st Floor: 774 sq. ft
Excluded: Utility 179 sq. ft, Garage 240 sq. ft, Walls: 149 sq. ft

Property summary



2
Floors



3
Bedrooms



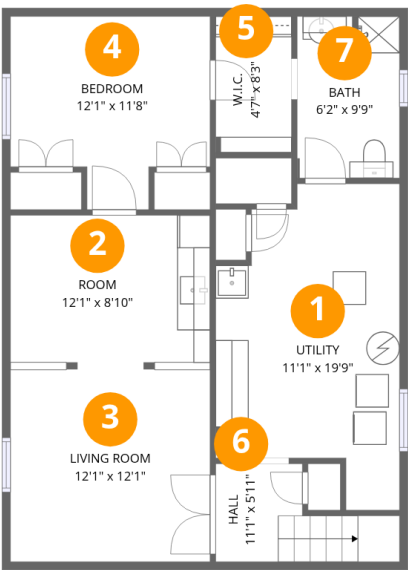
2
Bathrooms



1
Garages

Home data report

420 McKellar St,Peterborough,ON,CA



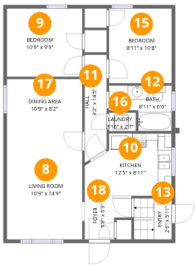
Room dimensions

Floor 1 Below grade Total:595sqft Excluded: 179sqft

#		Dimensions	sqft	Counted as living area
1	Utility	11'1" x 19'9"	179 sq. ft	No
2	Room	12'1" x 8'10"	107 sq. ft	Yes
3	Living Room	12'1" x 12'1"	146 sq. ft	Yes
4	Bedroom	12'1" x 11'8"	119 sq. ft	Yes
5	W.I.C.	4'7" x 8'3"	38 sq. ft	Yes
6	Hall	11'1" x 5'11"	47 sq. ft	Yes
7	Bath	6'2" x 9'9"	60 sq. ft	Yes

Home data report

420 McKellar St,Peterborough,ON,CA



Room dimensions

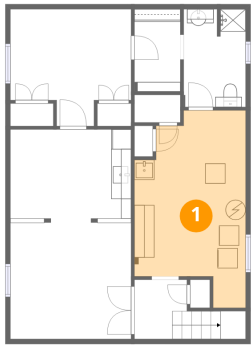
Floor 2

Total:774sqft

Excluded: 240sqft

#		Dimensions	sqft	Counted as living area
8	Living Room	10'9" x 14'9"	158 sq. ft	Yes
9	Bedroom	10'9" x 9'9"	105 sq. ft	Yes
10	Kitchen	12'5" x 8'11"	98 sq. ft	Yes
11	Hall	3'2" x 14'5"	45 sq. ft	Yes
12	Bath	8'11" x 6'6"	46 sq. ft	Yes
13	Entry	2'6" x 5'11"	32 sq. ft	Yes
14	Garage	11'9" x 20'5"	240 sq. ft	No
15	Bedroom	8'11" x 10'8"	95 sq. ft	Yes
16	Laundry	3'10" x 2'7"	10 sq. ft	Yes
17	Dining Area	10'9" x 8'2"	88 sq. ft	Yes
18	Foyer	6'8" x 6'3"	34 sq. ft	Yes

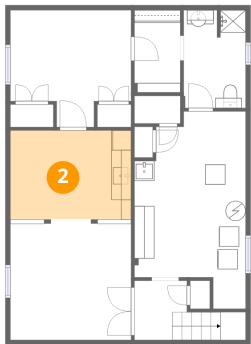
1 Floor 1 - Utility



Dimensions: 11'1" x 19'9"
Area: 179 sq. ft
Counted as living area: No

Heated: Yes
Finished: No
Enclosed: Yes
Contiguous: Yes
Permitted: Yes
Wet space: No
Addition: No
Conversion: No

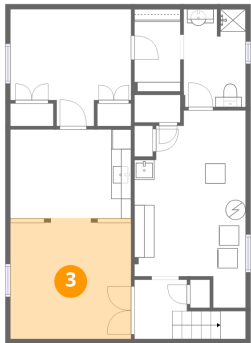
2 Floor 1 - Room



Dimensions: 12'1" x 8'10"
Area: 107 sq. ft
Counted as living area: Yes

Heated: Yes
Finished: Yes
Enclosed: Yes
Contiguous: Yes
Permitted: Yes
Wet space: No
Addition: No
Conversion: No

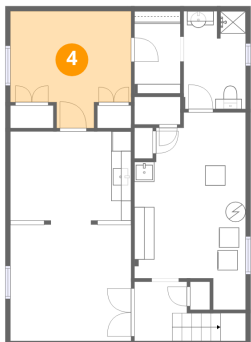
3 Floor 1 - Living Room



Dimensions: 12'1" x 12'1"
Area: 146 sq. ft
Counted as living area: Yes

Heated: Yes
Finished: Yes
Enclosed: Yes
Contiguous: Yes
Permitted: Yes
Wet space: No
Addition: No
Conversion: No

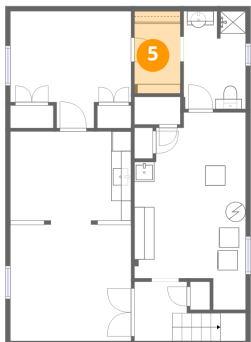
4 Floor 1 - Bedroom



Dimensions: 12'1" x 11'8"
Area: 119 sq. ft
Counted as living area: Yes

Heated: Yes
Finished: Yes
Enclosed: Yes
Contiguous: Yes
Permitted: Yes
Wet space: No
Addition: No
Conversion: No

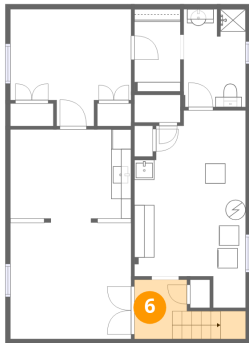
5 Floor 1 - W.I.C.



Dimensions: 4'7" x 8'3"
Area: 38 sq. ft
Counted as living area: Yes

Heated: Yes
Finished: Yes
Enclosed: Yes
Contiguous: Yes
Permitted: Yes
Wet space: No
Addition: No
Conversion: No

6 Floor 1 - Hall



Dimensions: 11'1" x 5'11"
Area: 47 sq. ft
Counted as living area: Yes

Heated: Yes
Finished: Yes
Enclosed: Yes
Contiguous: Yes
Permitted: Yes
Wet space: No
Addition: No
Conversion: No

7 Floor 1 - Bath



Dimensions: 6'2" x 9'9"
Area: 60 sq. ft
Counted as living area: Yes

Heated: Yes
Finished: Yes
Enclosed: Yes
Contiguous: Yes
Permitted: Yes
Wet space: Yes
Addition: No
Conversion: No

8 Floor 2 - Living Room



Dimensions: 10'9" x 14'9"
Area: 158 sq. ft
Counted as living area: Yes

Heated: Yes
Finished: Yes
Enclosed: Yes
Contiguous: Yes
Permitted: Yes
Wet space: No
Addition: No
Conversion: No

9 Floor 2 - Bedroom



Dimensions: 10'9" x 9'9"
Area: 105 sq. ft
Counted as living area: Yes

Heated: Yes
Finished: Yes
Enclosed: Yes
Contiguous: Yes
Permitted: Yes
Wet space: No
Addition: No
Conversion: No



10 Floor 2 - Kitchen



Dimensions: 12'5" x 8'11"
Area: 98 sq. ft
Counted as living area: Yes

Heated: Yes
Finished: Yes
Enclosed: Yes
Contiguous: Yes
Permitted: Yes
Wet space: No
Addition: No
Conversion: No



11 Floor 2 - Hall



Dimensions: 3'2" x 14'5"
Area: 45 sq. ft
Counted as living area: Yes

Heated: Yes
Finished: Yes
Enclosed: Yes
Contiguous: Yes
Permitted: Yes
Wet space: No
Addition: No
Conversion: No



12 Floor 2 - Bath



Dimensions: 8'11" x 6'6"
Area: 46 sq. ft
Counted as living area: Yes

Heated: Yes
Finished: Yes
Enclosed: Yes
Contiguous: Yes
Permitted: Yes
Wet space: Yes
Addition: No
Conversion: No



13 Floor 2 - Entry



Dimensions: 2'6" x 5'11"
Area: 32 sq. ft
Counted as living area: Yes

Heated: Yes
Finished: Yes
Enclosed: Yes
Contiguous: Yes
Permitted: Yes
Wet space: No
Addition: No
Conversion: No



14 Floor 2 - Garage



Dimensions: 11'9" x 20'5"
Area: 240 sq. ft
Counted as living area: No

Heated: No
Finished: No
Enclosed: Yes
Contiguous: Yes
Permitted: Yes
Wet space: No
Addition: No
Conversion: No



15 Floor 2 - Bedroom



Dimensions: 8'11" x 10'8"
Area: 95 sq. ft
Counted as living area: Yes

Heated: Yes
Finished: Yes
Enclosed: Yes
Contiguous: Yes
Permitted: Yes
Wet space: No
Addition: No
Conversion: No



16 Floor 2 - Laundry



Dimensions: 3'10" x 2'7"
Area: 10 sq. ft
Counted as living area: Yes

Heated: Yes
Finished: Yes
Enclosed: Yes
Contiguous: Yes
Permitted: Yes
Wet space: No
Addition: No
Conversion: No



17 Floor 2 - Dining Area



Dimensions: 10'9" x 8'2"
Area: 88 sq. ft
Counted as living area: Yes

Heated: Yes
Finished: Yes
Enclosed: Yes
Contiguous: Yes
Permitted: Yes
Wet space: No
Addition: No
Conversion: No



18 Floor 2 - Foyer



Dimensions: 6'8" x 6'3"
Area: 34 sq. ft
Counted as living area: Yes

Heated: Yes
Finished: Yes
Enclosed: Yes
Contiguous: Yes
Permitted: Yes
Wet space: No
Addition: No
Conversion: No

