

Home report

3352 Leahy Drive, Webster Grove, Dallas, Dallas County, Texas,  
United States, 75229




Total Area: 1801 sq. ft

Floor 1: 1801 sq. ft

Excluded: Porch 27 sq. ft, Patio 254 sq. ft, Utility 14 sq. ft, Garage 398 sq. ft, Walls: 141 sq. ft

Property summary

 1 Floors

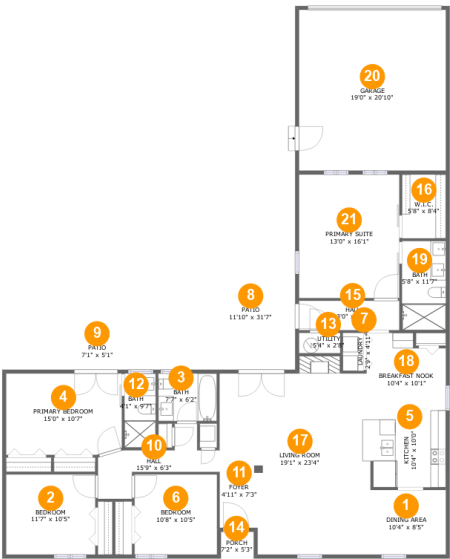
 4 Bedrooms

 3 Bathrooms

 1 Garages

Home report

3352 Leahy Drive, Webster Grove, Dallas, Dallas County, Texas,  
United States, 75229



Room dimensions

Floor 1

Total:1801sqft

Excluded: 693sqft

#		Max Dimensions	sqft	Included
1	Dining Area	10'4" x 8'5"	86 sq. ft	Yes
2	Bedroom	11'7" x 10'5"	120 sq. ft	Yes
3	Bath	7'7" x 6'2"	47 sq. ft	Yes
4	Primary Bedroom	15'0" x 10'7"	157 sq. ft	Yes
5	Kitchen	10'4" x 10'0"	102 sq. ft	Yes
6	Bedroom	10'8" x 10'5"	111 sq. ft	Yes
7	Laundry	2'9" x 4'11"	14 sq. ft	Yes
8	Patio	11'10" x 31'7"	218 sq. ft	No
9	Patio	7'1" x 5'1"	36 sq. ft	No
10	Hall	15'9" x 6'3"	70 sq. ft	Yes
11	Foyer	4'11" x 7'3"	36 sq. ft	Yes

## Home report

**3352 Leahy Drive, Webster Grove, Dallas, Dallas County, Texas,  
United States, 75229**

#		Max Dimensions	sqft	Included
12	Bath	4'1" x 9'7"	39 sq. ft	Yes
13	Utility	5'4" x 2'8"	14 sq. ft	No
14	Porch	7'2" x 5'3"	27 sq. ft	No
15	Hall	13'0" x 3'10"	50 sq. ft	Yes
16	W.I.C.	5'8" x 8'4"	47 sq. ft	Yes
17	Living Room	19'1" x 23'4"	408 sq. ft	Yes
18	Breakfast Nook	10'4" x 10'1"	95 sq. ft	Yes
19	Bath	5'8" x 11'7"	66 sq. ft	Yes
20	Garage	19'0" x 20'10"	398 sq. ft	No
21	Primary Suite	13'0" x 16'1"	209 sq. ft	Yes

1 Floor 1 - Dining Area



Max Dimensions: 10'4" x 8'5"  
Calculated Area: 86 sq. ft  
Included: Yes

Heated: Yes  
Finished: Yes  
Enclosed: Yes  
Contiguous: Yes  
Permitted: Yes  
Wet space: No  
Addition: No  
Conversion: No

2 Floor 1 - Bedroom



Max Dimensions: 11'7" x 10'5"  
Calculated Area: 120 sq. ft  
Included: Yes

Heated: Yes  
Finished: Yes  
Enclosed: Yes  
Contiguous: Yes  
Permitted: Yes  
Wet space: No  
Addition: No  
Conversion: No

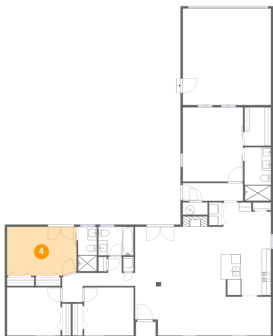
3 Floor 1 - Bath



Max Dimensions: 7'7" x 6'2"  
Calculated Area: 47 sq. ft  
Included: Yes

Heated: Yes  
Finished: Yes  
Enclosed: Yes  
Contiguous: Yes  
Permitted: Yes  
Wet space: Yes  
Addition: No  
Conversion: No

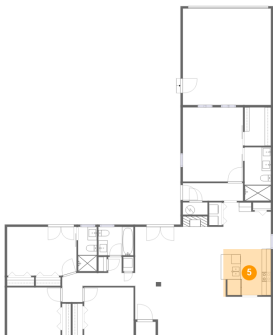
4 Floor 1 - Primary Bedroom



Max Dimensions: 15'0" x 10'7"  
Calculated Area: 157 sq. ft  
Included: Yes

Heated: Yes  
Finished: Yes  
Enclosed: Yes  
Contiguous: Yes  
Permitted: Yes  
Wet space: No  
Addition: No  
Conversion: No

5 Floor 1 - Kitchen



Max Dimensions: 10'4" x 10'0"  
Calculated Area: 102 sq. ft  
Included: Yes

Heated: Yes  
Finished: Yes  
Enclosed: Yes  
Contiguous: Yes  
Permitted: Yes  
Wet space: No  
Addition: No  
Conversion: No

6 Floor 1 - Bedroom



Max Dimensions: 10'8" x 10'5"  
Calculated Area: 111 sq. ft  
Included: Yes

Heated: Yes  
Finished: Yes  
Enclosed: Yes  
Contiguous: Yes  
Permitted: Yes  
Wet space: No  
Addition: No  
Conversion: No

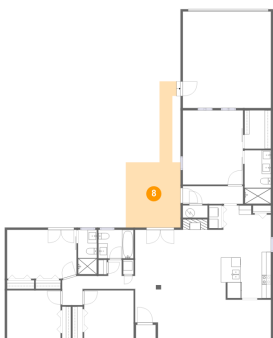
7 Floor 1 - Laundry



Max Dimensions: 2'9" x 4'11"  
Calculated Area: 14 sq. ft  
Included: Yes

Heated: Yes  
Finished: Yes  
Enclosed: Yes  
Contiguous: Yes  
Permitted: Yes  
Wet space: No  
Addition: No  
Conversion: No

8 Floor 1 - Patio



Max Dimensions: 11'10" x 31'7"  
Calculated Area: 218 sq. ft  
Included: No

Heated: No  
Finished: Yes  
Enclosed: No  
Contiguous: Yes  
Permitted: Yes  
Wet space: No  
Addition: No  
Conversion: No

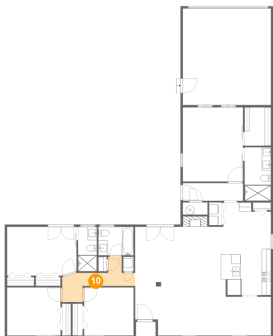
9 Floor 1 - Patio



Max Dimensions: 7'1" x 5'1"  
Calculated Area: 36 sq. ft  
Included: No

Heated: No  
Finished: Yes  
Enclosed: No  
Contiguous: Yes  
Permitted: Yes  
Wet space: No  
Addition: No  
Conversion: No

10 Floor 1 - Hall



Max Dimensions: 15'9" x 6'3"  
Calculated Area: 70 sq. ft  
Included: Yes

Heated: Yes  
Finished: Yes  
Enclosed: Yes  
Contiguous: Yes  
Permitted: Yes  
Wet space: No  
Addition: No  
Conversion: No

11 Floor 1 - Foyer



Max Dimensions: 4'11" x 7'3"  
Calculated Area: 36 sq. ft  
Included: Yes

Heated: Yes  
Finished: Yes  
Enclosed: Yes  
Contiguous: Yes  
Permitted: Yes  
Wet space: No  
Addition: No  
Conversion: No

## Home report

3352 Leahy Drive, Webster Grove, Dallas, Dallas County, Texas,  
United States, 75229

### 12 Floor 1 - Bath



Max Dimensions: 4'1" x 9'7"  
Calculated Area: 39 sq. ft  
Included: Yes

Heated: Yes  
Finished: Yes  
Enclosed: Yes  
Contiguous: Yes  
Permitted: Yes  
Wet space: Yes  
Addition: No  
Conversion: No

### 13 Floor 1 - Utility



Max Dimensions: 5'4" x 2'8"  
Calculated Area: 14 sq. ft  
Included: No

Heated: Yes  
Finished: No  
Enclosed: Yes  
Contiguous: Yes  
Permitted: Yes  
Wet space: No  
Addition: No  
Conversion: No

### 14 Floor 1 - Porch



Max Dimensions: 7'2" x 5'3"  
Calculated Area: 27 sq. ft  
Included: No

Heated: No  
Finished: Yes  
Enclosed: No  
Contiguous: Yes  
Permitted: Yes  
Wet space: No  
Addition: No  
Conversion: No



15 Floor 1 - Hall



Max Dimensions: 13'0" x 3'10"  
Calculated Area: 50 sq. ft  
Included: Yes

Heated: Yes  
Finished: Yes  
Enclosed: Yes  
Contiguous: Yes  
Permitted: Yes  
Wet space: No  
Addition: No  
Conversion: No

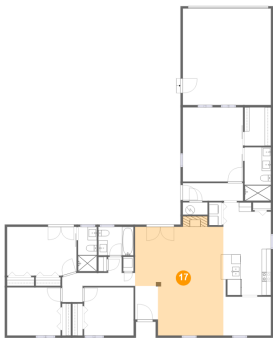
16 Floor 1 - W.I.C.



Max Dimensions: 5'8" x 8'4"  
Calculated Area: 47 sq. ft  
Included: Yes

Heated: Yes  
Finished: Yes  
Enclosed: Yes  
Contiguous: Yes  
Permitted: Yes  
Wet space: No  
Addition: No  
Conversion: No

17 Floor 1 - Living Room



Max Dimensions: 19'1" x 23'4"  
Calculated Area: 408 sq. ft  
Included: Yes

Heated: Yes  
Finished: Yes  
Enclosed: Yes  
Contiguous: Yes  
Permitted: Yes  
Wet space: No  
Addition: No  
Conversion: No

18 Floor 1 - Breakfast Nook



Max Dimensions: 10'4" x 10'1"  
Calculated Area: 95 sq. ft  
Included: Yes

Heated: Yes  
Finished: Yes  
Enclosed: Yes  
Contiguous: Yes  
Permitted: Yes  
Wet space: No  
Addition: No  
Conversion: No

19 Floor 1 - Bath



Max Dimensions: 5'8" x 11'7"  
Calculated Area: 66 sq. ft  
Included: Yes

Heated: Yes  
Finished: Yes  
Enclosed: Yes  
Contiguous: Yes  
Permitted: Yes  
Wet space: Yes  
Addition: No  
Conversion: No

20 Floor 1 - Garage



Max Dimensions: 19'0" x 20'10"  
Calculated Area: 398 sq. ft  
Included: No

Heated: No  
Finished: No  
Enclosed: Yes  
Contiguous: Yes  
Permitted: Yes  
Wet space: No  
Addition: No  
Conversion: No

3352 Leahy Drive, Webster Grove, Dallas, Dallas County, Texas,  
United States, 75229

**21** Floor 1 - Primary Suite

---



Max Dimensions: 13'0" x 16'1"  
Calculated Area: 209 sq. ft  
Included: Yes

Heated: Yes  
Finished: Yes  
Enclosed: Yes  
Contiguous: Yes  
Permitted: Yes  
Wet space: No  
Addition: No  
Conversion: No